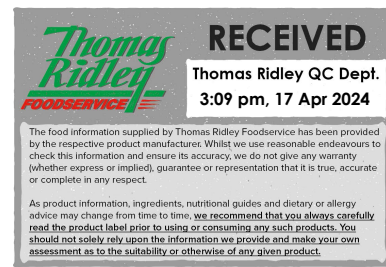


Changed Apr 17, 2024 11:13

Reviewed Apr 17, 2024 11:13

Erudus ID 33a2d7fc2f5a451298f99e9b4a887b5c

Version 2.0



00142

Tempura Batter Mix 4 x 3.5kg

Tempura Batter Mix 4x3.5kg

PRODUCT DESCRIPTION

A tempura batter mix, suitable for coating meat, prawns and vegetables.

Brand	Middleton Foods
Manufacturer Product Code	CM0039
Manufacturer Version	8
Number	
Product Type	Food
Product Category	Other Bakery Products
Storage Type	Ambient
Erudus ID	33a2d7fc2f5a451298f99e9b4a887b5c
Specification Type	Bakery Products
Inner Component GTIN	5020801005641
Outer Case GTIN	5028081005658



INGREDIENTS

Ingredient Declaration

WHEAT Flour (WHEAT, Calcium, Iron, Niacin, Thiamin), Maize Starch, Raising Agents (E341(i), E500(ii)), Salt.

ALLERGENS

Product Contains:

Celery/Celeryiac	No	Mustard	No
Cereals Containing Gluten	Yes	Nuts (Tree)	No
Barley	No	Almond nuts	No
Oats	No	Brazil nuts	No
Rye	No	Cashew nuts	No
Wheat (including Spelt and Khorasan)	Yes	Hazelnuts	No
Crustacea	No	Macadamia (Queensland) nuts	No
Eggs	May Contain	Pecan nuts	No
Fish	No	Pistachio nuts	No
Lupin	No	Walnuts	No
Milk	May Contain	Peanuts	No
Molluscs	No	Sesame Seeds	No
		Soybeans	May Contain
		Sulphur Dioxide and Sulphites	No

Risk Source:

SUPPLEMENTARY INGREDIENT INFORMATION ADDITIVES

GM Protein/DNA	No
----------------	----

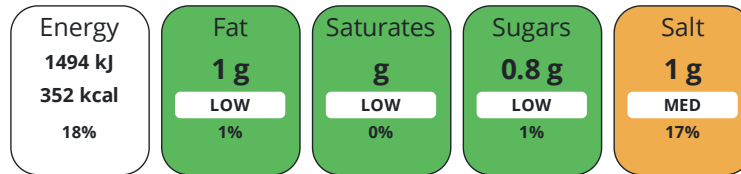
Product Contains:

DIET
SUITABILITY

Vegan Diet	Suitable for	Vegetarian Diet	Suitable for
Halal Diet	No	Kosher Diet	No

NUTRITIONAL
INFORMATION

Each 100g/ml portion contains:



of your reference intake.

Typical values per 100g/ml : Energy 352kcal / 1494kJ

Nutrient	per 100g	RI per 100g
Energy (kJ)	1494 kJ	18%
Energy (kcal)	352 kcal	18%
Fat	1 g	1%
of which Saturates	0 g	0%
Carbohydrate	81 g	31%
of which Sugars	0.8 g	1%
Protein	5.2 g	10%
Salt	1 g	17%

SUPPLEMENTARY
NUTRITIONAL
INFORMATION

HANDLING &
STORAGE
INFORMATION

Directions For Use

Dry Mix / ICY water (No ice cubes should be added to dry mix) 500g / 700g 1kg / 1.4kg 3.5kg (whole bag) / 4.9kg Make Up
Instructions: 1. Weigh out water and then add dry mix. 2. Using a hand whisk, mix for a few seconds, leaving lumps of mix unmixed. The batter should be thin and milky with a lumpy consistency. DO NOT OVERMIX. For best results, cut all vegetables/meat to approximately the same size. Make sure meat/prawns/veg are dry before dipping. Ensure water is as cold as possible. Heat oil to 190°-200°C. 3. Dip food to be coated in batter, shake off excess batter gently and fry immediately. 4. Drain and serve.

Storage Instructions

Store in a cool, dry place.

Shelf Life from Time of Production	365 Days	Exempt From Shelf Life Labelling	No
BRCGS Certified		Roundtable of Sustainable Palm Oil (RSPO)	
School Approved (The Requirement for School Food Regulation 2014)		Other Accreditation	

ACCREDITATIONS/
CERTIFICATIONS/
ASSURANCE
SCHEMES

ORIGIN

Product Country of Origin/Place of United Kingdom

Provenance

Additional Origin Details

UK

PRODUCT
CHARACTERISTICS

Standards Testing

Do you undertake trend analysis of microbiological results?	No	Is shelf life testing undertaken?	Yes
--	----	--	-----

CONFIGURATION	Case Configuration		Inner Pack Configuration					
	Total Quantity of Inner Components in Outer Case	4 Units						
	Is the Outer Case Splittable?	Yes						
PRODUCT WEIGHTS	Inner Component							
	Variable Weight Consumer Item	No						
	Inner Component Weight	3.5 kg						
	Outer Case							
	Outer Case Gross Weight	14.42 kg						
	Outer Case Net Weight	14 kg						
PRODUCT DIMENSIONS	Inner Component							
	Inner Component Depth	100 mm						
	Inner Component Width	152 mm						
	Inner Component Height	400 mm						
	Outer Case							
	Outer Case Depth	333 mm						
	Outer Case Width	242 mm						
	Outer Case Height	240 mm						
	PALLET INFORMATION	Quantity of Cases Per Pallet Layer	14 Cases	Pallet Height	1.2 MTR			
		Quantity of Layers Per Pallet	5 Layers					
Quantity of Cases Per Pallet		70 Cases						
PACKAGING	Inner Component Packaging							
	Type	Materials	Weight	Recycled Plastic %	Recyclable	Returnable	Composite	
	Paper/Polyethylene	Plastic	4 g	- %				
	Paper/Polyethylene	Paper/Cardboard	41 g	- %				
	Outer Case Packaging							
	Type	Materials	Weight	Recycled Plastic %	Recyclable	Returnable	Composite	
	Case	Paper/Cardboard	287 g	- %				
	Transport Packaging							
	Type	Materials	Weight	Recycled Plastic %	Recyclable	Returnable	Composite	
	Other	Wood	2200 g	- %		Yes		
	OTHER INFORMATION	Manufacturer Comments						
		CM0039 Tempura Batter Mix 4 x 3.5kg.						

CONTACT
INFORMATION

Address

Middleton Foods
Middleton Business Park
655 Willenhall Road
Willenhall
West Midlands
WV13 3LH
England

P. (Phone) 01902 608122

Complaints Contact

Michelle Baker
Admin Manager
michelle@middletonfoods.com

P. (Phone) 01902 608122 (Ext: 119)

Technical Contact

Maggie Gibbs
Technical Manager
maggie@middletonfoods.com

P. (Phone) 01902 608122 (Ext: 219)

The information on the [Erudus System](#) has been supplied by the manufacturers of the products and, whilst the owners of the Erudus System take steps to ensure the information is regularly updated, they give no warranty and no guarantee that the information is accurate. Product information and ingredients may change, please always read product labels carefully in addition to using the information provided by Erudus.

We do not accept liability for any inaccuracies or incorrect information contained on this site.
Please visit <http://www.erudus.com/terms-and-conditions> for full terms and conditions.