

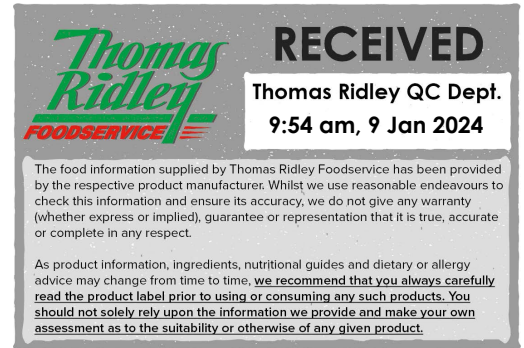
Tuna Chunks Brine 6x

Princes Tuna Chunks in Brine 6X800g

PRODUCT DESCRIPTION

Canned Tuna products shall be manufactured from cooked tuna fish which has been skinned, headed, eviscerated, trimmed of all blood muscle, scorched or oxidised surface tissue and packed with vegetable oil, sunflower oil, olive oil, brine or springwater in hermetically sealed cans and sterilised by the application of heat. Skipjack {Euthynnus (Katsuwonus) pelamis {L.}} and Yellowfin {Thunnus albacora (Lowe)}, and 'Bigeye' (Thunnus obesus) are the only species of Tuna permitted for the manufacture of these products.

Brand	Princes Limited
Manufacturer Product Code	364815
Product Type	Food
Product Category	Seafood - Fish
Storage Type	Ambient
Erudus ID	a6fd0354d0384ae5923cd478ebff0134
Specification Type	Legacy
Inner Component GTIN	5000232873439
Outer Case GTIN	05000232873446



INGREDIENTS

Ingredient Declaration
Tuna (FISH), Water, Salt

ALLERGENS

Product Contains:

Celery/Celeriac	No	Mustard	No
Cereals Containing Gluten	No	Nuts (Tree)	No
Barley	No	Almond nuts	No
Oats	No	Brazil nuts	No
Rye	No	Cashew nuts	No
Wheat (including Spelt and Khorasan)	No	Hazelnuts	No
Gluten content <20ppm	Yes	Macadamia (Queensland) nuts	No
Crustacea	No	Pecan nuts	No
Eggs	No	Pistachio nuts	No
Fish	Yes	Walnuts	No
Lupin	No	Peanuts	No
Milk	No	Sesame Seeds	No
Molluscs	No	Soybeans	No
		Sulphur Dioxide and Sulphites	No
Palm Oil	No		
Hydrogenated Vegetable Oil/Fat	No		
GM Protein/DNA	No		

SUPPLEMENTARY INGREDIENT INFORMATION

ADDITIVES

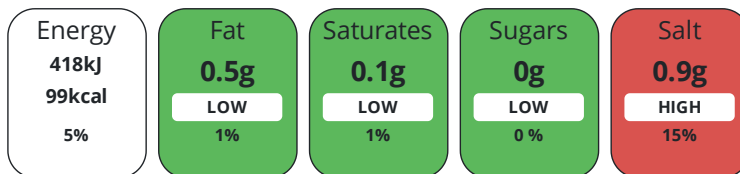
Product Contains:

Artificial Antioxidants	No	Artificial Flavourings	No
Artificial Colours	No	Artificial Preservatives	No
Artificial Flavour Enhancers	No	Artificial Sweeteners	No
Halal Diet	No	Kosher Diet	No
Vegetarian Diet	No	Vegan Diet	No

DIET SUITABILITY

NUTRITIONAL INFORMATION

Each 100g/ml portion contains:



of your reference intake.

Typical values per 100g/ml : Energy 99kcal / 418kj

Nutrient	per 100g/ml	RI per 100g/ml
Energy (kj)	418 kj	5%
Energy (kcal)	99 kcal	5%
Fat	0.5 g	1%
of which Saturates	0.1 g	1%
Carbohydrate	< 0.5 g	0%
of which Sugars	0 g	0%
Fibre	< 0.5 g	
Protein	23.5 g	47%
Salt	0.9 g	15%
Sodium	360 mg	

SUPPLEMENTARY NUTRITIONAL INFORMATION

HANDLING & STORAGE INFORMATION

Directions For Use

The product is ready to serve straight from the can.

Storage Instructions

Store in a cool dry place. Once opened, empty, cover and refrigerate. Use within 24h.

Shelf Life from Time of Production 1080 Days

ACCREDITATIONS/ CERTIFICATIONS/ ASSURANCE SCHEMES



Other Accreditation

NA

ORIGIN

Product Country of Origin/Place of Mauritius

Provenance

Additional Origin Details

NA

PRODUCT CHARACTERISTICS	Standards Testing						
	Do you undertake trend analysis of microbiological results?	No	Is shelf life testing undertaken?		Yes		
CONFIGURATION	Case Configuration		Inner Pack Configuration				
	Total Quantity of Inner Components in Outer Case	6 Units					
	Is the Outer Case Splittable?	No					
PRODUCT WEIGHTS	Inner Component						
	Variable Weight Consumer Item	No					
	Net Drained Weight	0.56 g					
	Weight/Volume						
	800g						
	Outer Case						
PRODUCT DIMENSIONS	Outer Case Gross Weight		5.48 kg				
	Outer Case Net Weight		4.8 kg				
	Inner Component						
	Inner Component Depth		104 mm				
	Inner Component Width		0 mm				
	Inner Component Height		101 mm				
	Outer Case						
	Outer Case Depth		313 mm				
	Outer Case Width		207 mm				
PALLET INFORMATION	Outer Case Height		111 mm				
	Quantity of Cases Per Pallet Layer		16 Cases	Pallet Height		1.45 MTR	
	Quantity of Layers Per Pallet		12 Layers	Pallet Gross Weight		1079.39 kg	
	Quantity of Cases Per Pallet		192 Cases				
PACKAGING	Inner Component Packaging						
	Type	Materials	Weight	Recycled Plastic %	Recyclable	Returnable	Composite
	Can	Paper/Cardboard	3 g	- %			
	Can	Steel	88.1 g	- %			
	Outer Case Packaging						
	Type	Materials	Weight	Recycled Plastic %	Recyclable	Returnable	Composite
	Case	Plastic	12.3 g	- %			
	Case	Paper/Cardboard	77.5 g	- %			
	Transport Packaging						
	Type	Materials	Weight	Recycled Plastic %	Recyclable	Returnable	Composite
	Other	Plastic	0.78 g	- %			
	OTHER INFORMATION						

CONTACT
INFORMATION

Address

Princes Limited
Royal Liver Building
Pier Head
Liverpool
L3 1NX
England

P: (Phone) 0151 966 7000

Technical Contact

Christine Collins
Specification Technologist
christine.collins@princes.co.uk

P: (Phone) 01406368380

The information on the [Erudus System](#) has been supplied by the manufacturers of the products and, whilst the owners of the Erudus System take steps to ensure the information is regularly updated, they give no warranty and no guarantee that the information is accurate. Product information and ingredients may change, please always read product labels carefully in addition to using the information provided by Erudus.

We do not accept liability for any inaccuracies or incorrect information contained on this site.

Please visit <http://www.erudus.com/terms-and-conditions> for full terms and conditions.