

Changed Feb 22, 2024 09:29

Reviewed Feb 22, 2024 09:29

Erudus ID b2cc391f97f14d6b87f22f3490aa2069

Version 3.0

00202

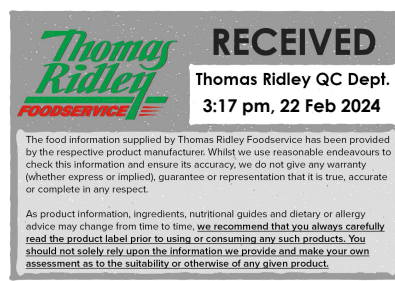
Kara English White Muffins x6

White English Muffins 8x6x72g

PRODUCT DESCRIPTION

English Muffin coated in semolina. 6 Muffins per pack.

Brand	Kara Foodservice (Fletchers)
Manufacturer Product Code	F00976
Manufacturer Version	8
Number	
Product Type	Food
Product Category	Other Bakery Products
Storage Type	Frozen
Erudus ID	b2cc391f97f14d6b87f22f3490aa2069
Specification Type	Bakery Products



Outer Case GTIN 05010066109765



INGREDIENTS

Ingredient Declaration

Wheat Flour (**WHEAT** Flour, Calcium Carbonate, Niacin, Iron, Thiamin), Water, Semolina (**WHEAT**), Salt, Yeast, **SOYA** Flour, Sugar, Palm Oil, Spirit Vinegar, Emulsifier (E472e), Preservative (E282), Flour Treatment Agent (E300).

ALLERGENS

Product Contains:

Celery/Celery	No	Mustard	No
Cereals Containing Gluten	Yes	Nuts (Tree)	No
Barley	No	Almond nuts	No
Oats	No	Brazil nuts	No
Rye	No	Cashew nuts	No
Wheat (including Spelt and Khorasan)	Yes	Hazelnuts	No
Crustacea	No	Macadamia (Queensland) nuts	No
Eggs	No	Pecan nuts	No
Fish	No	Pistachio nuts	No
Lupin	No	Walnuts	No
Milk	No	Peanuts	No
Molluscs	No	Sesame Seeds	May Contain
		Soybeans	Yes
		Sulphur Dioxide and Sulphites	No

Risk Source:

Sesame Seeds (Risk Source)	Factory
-----------------------------------	---------

Allergen Statement On Pack

For allergens (including cereals containing gluten), see ingredients in CAPITALS. Also, may contain sesame.

SUPPLEMENTARY
INGREDIENT
INFORMATION

Palm Oil	Yes	Alcoholic Strength %Vol (ABV)	0 % Vol
Hydrogenated Vegetable Oil/Fat	No	CBD Concentration per Unit	0 mg
GM Protein/DNA	No		

ADDITIVES

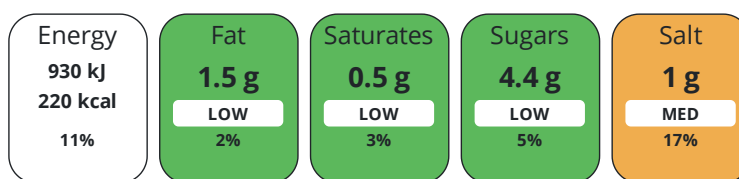
<i>Product Contains:</i>			
Artificial Antioxidants	No	Artificial Flavourings	No
Artificial Colours	No	Artificial Preservatives	Yes
Artificial Flavour Enhancers	No	Artificial Sweeteners	No

DIET
SUITABILITY

Vegan Diet	Suitable for	Vegetarian Diet	Suitable for
Halal Diet	No	Kosher Diet	No

NUTRITIONAL
INFORMATION

Each 100g/ml portion contains:



of your reference intake.

Typical values per 100g/ml : Energy 220kcal / 930kJ

Nutrient	per 100g	RI per 100g	per 72g serving	RI per 72g serving
Energy (kJ)	930 kJ	11%	669.6 kJ	8%
Energy (kcal)	220 kcal	11%	158.4 kcal	8%
Fat	1.5 g	2%	1.1 g	2%
of which Saturates	0.5 g	3%	0.4 g	2%
of which Mono-unsaturates	0.4 g		0.3 g	
of which Polyunsaturates	0.5 g		0.4 g	
Carbohydrate	41.7 g	16%	30 g	12%
of which Sugars	4.4 g	5%	3.2 g	4%
of which Polyols	0 g		-	
of which Starch	37.3 g		26.9 g	
Fibre	2.7 g		1.9 g	
Protein	8.4 g	17%	6 g	12%
Salt	1 g	17%	0.7 g	12%
Sodium	400 mg		288 mg	

Serving Size	72 g
Serving Size Description	Per muffin

Source of Nutritional Information Manufacturers analysis

SUPPLEMENTARY
NUTRITIONAL
INFORMATION

Trans Fats per 100 g/ml	0 g
Fat Percentage in Dry Matter per 100 g/ml	2.51 %
Fibre Type	Fibre AOAC

HFSS (HIGH IN
FAT, SALT AND
SUGAR)

HFSS Status	No
HFSS Score	-1

HANDLING & STORAGE INFORMATION

Directions For Use

To defrost: remove from case and leave in pack at room temperature for approximately 2 hours, or until fully defrosted. Once defrosted. Store in a sealed pack in a cool, dry place away from direct sunlight. Once defrosted use within 3 days. Once defrosted do not refreeze. For best results slice and place in a toaster or grill until golden brown. .

Storage Instructions

Store Frozen at -18°C or below

Shelf Life from Time of Production	365 Days	Exempt From Shelf Life Labelling	No
Shelf Life From Opening	3 Days		
Shelf Life Once Defrosted	3 Days		

ACCREDITATIONS/ CERTIFICATIONS/ ASSURANCE SCHEMES



ORIGIN

Product Country of Origin/Place of Provenance United Kingdom

PRODUCT CHARACTERISTICS

Standards Testing			
Do you undertake trend analysis of microbiological results?	No	Is shelf life testing undertaken?	Yes

Microbiological Standards

Organism	Description	Frequency	Target	Maximum	Sample (g or ml)
Total Viable Count (TVC) (cfu/g or ml)		Annually	<1000	10000	432
Enterobacteriaceae (cfu/g or ml)		Annually	<10	1000	432
Salmonella (cfu/g or ml)	Absent in 25g sample	Annually	<0	0	25
Yeast (cfu/g or ml)		Hourly	<100	100000	432
Moulds (cfu/g or ml)		Hourly	<100	10000	432

Physical Standards

Test	Description	Frequency	Target	Range	Sample (g or ml)
Dimensions Diameter (mm)		Every Batch	=87	80 to 94	72
Dimensions Height (mm)		Every Batch	=31	26 to 36	72
Weight (g)		Hourly	=72	67 to 77	72

SUPPLEMENTARY INFORMATION

Fried During Manufacture	No	Closure Type	Heat sealed film
---------------------------------	----	---------------------	------------------

HAZARD CONTROLS

Metal Detection	Yes	Sieving	Yes
------------------------	-----	----------------	-----

CONFIGURATION

Case Configuration		Inner Pack Configuration	
Variable Inner Components in Outer Case	No	Is Inner Pack Splittable?	No
Total Quantity of Inner Components in Outer Case	48 Units	Quantity of Inner Components in Inner Pack	6
Total Quantity of Inner Packs in Outer Case	8 Units		
Is the Outer Case Splittable?	No		

PRODUCT WEIGHTS

Inner Component	
Variable Weight Consumer Item	No
Inner Component Weight	72 g
e mark	No
Outer Case	
Outer Case Gross Weight	3.74 kg
Outer Case Net Weight	3.22 kg

PRODUCT DIMENSIONS

Inner Component	
Inner Component Depth	87 mm
Inner Component Width	87 mm
Inner Component Height	31 mm
Outer Case	
Outer Case Depth	304 mm
Outer Case Width	216 mm
Outer Case Height	264 mm

PALLET INFORMATION

Quantity of Cases Per Pallet Layer	16 Cases	Pallet Height	2.01 MTR
Quantity of Layers Per Pallet	7 Layers	Pallet Gross Weight	446.01 kg
Quantity of Cases Per Pallet	112 Cases		

PACKAGING

Inner Component Packaging						
Type	Materials	Weight	Recycled Plastic %	Recyclable	Returnable	Composite
Film	Plastic / OPP (Oriented Polypropylene)	3 g	0 %	Yes	No	No
Outer Case Packaging						
Type	Materials	Weight	Recycled Plastic %	Recyclable	Returnable	Composite
Tape	Plastic / PP (Polypropylene)	3 g	0 %	Yes	No	No
Case	Paper/Cardboard / Corrugated	247 g	- %	Yes	No	No
Transport Packaging						
Type	Materials	Weight	Recycled Plastic %	Recyclable	Returnable	Composite
Pallet Wrap	Plastic / LDPE (Low Density Polyethylene)	250 g	0 %	Yes	No	No
Pallet	Wood	28000 g	- %	No	Yes	No

MARKETING INFORMATION

Marketing Description
 A white English Muffin, coated in semolina. Serve toasted and top with avocado, eggs and salmon for a traditional English breakfast offering.

OTHER INFORMATION

Commodity Code	1905908000
Meursing Code	7010

CONTACT
INFORMATION

Address

Kara Foodservice (Fletchers)
Park Seventeen
Moss Lane
Whitefield
Manchester
M45 8FJ
England

P. (Phone) 0161 766 7471

The information on the [Erudus System](#) has been supplied by the manufacturers of the products and, whilst the owners of the Erudus System take steps to ensure the information is regularly updated, they give no warranty and no guarantee that the information is accurate. Product information and ingredients may change, please always read product labels carefully in addition to using the information provided by Erudus.

We do not accept liability for any inaccuracies or incorrect information contained on this site.
Please visit <http://www.erudus.com/terms-and-conditions> for full terms and conditions.