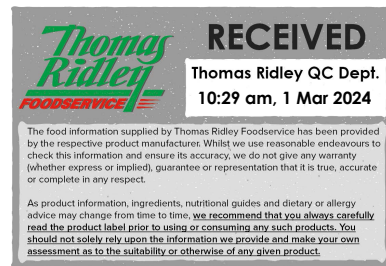


Changed Mar 01, 2024 09:18

Reviewed Mar 01, 2024 09:18

Erudus ID c56645336c4a4d5aaf59028da7677eba

Version 2.0



Thomas Ridley QC Dept.
10:29 am, 1 Mar 2024

The food information supplied by Thomas Ridley Foodservice has been provided by the respective product manufacturer. Whilst we use reasonable endeavours to check this information and ensure its accuracy, we do not give any warranty (whether express or implied), guarantee or representation that it is true, accurate or complete in any respect.

As product information, ingredients, nutritional guides and dietary or allergy advice may change from time to time, we recommend that you always carefully read the product label prior to using or consuming any such products. You should not solely rely upon the information we provide and make your own assessment as to the suitability or otherwise of any given product.



00262

Martins Gingerbread

Gingerbread

PRODUCT DESCRIPTION

Baked gingerbread man

Brand	Martins Craft Bakery Ltd
Manufacturer Product Code	8080
Product Type	Food
Product Category	Biscuits, Wafers and Crackers
Storage Type	Frozen
Erudus ID	c56645336c4a4d5aaf59028da7677eba
Specification Type	Bakery Products

Outer Case GTIN 5026420000203



INGREDIENTS

Ingredient Declaration

WHEAT Flour (with Calcium Carbonate, Iron, Niacin, Thiamin), Sugar, Golden Syrup, **MILK**, Vegetable Oils (Palm Oil, Rapeseed Oil), Water, Raising Agents (Sodium Bicarbonate, Diphosphates, Sodium Carbonates), Ground Ginger, Salt.

ALLERGENS

Product Contains:

Celery/Celery	No	Mustard	No
Cereals Containing Gluten	Yes	Nuts (Tree)	May Contain
Barley	No	Almond nuts	May Contain
Oats	May Contain	Brazil nuts	No
Rye	May Contain	Cashew nuts	No
Wheat (including Spelt and Khorasan)	Yes	Hazelnuts	May Contain
Crustacea	No	Macadamia (Queensland) nuts	No
Eggs	May Contain	Pecan nuts	No
Fish	No	Pistachio nuts	No
Lupin	No	Walnuts	No
Milk	Yes	Peanuts	No
Molluscs	No	Sesame Seeds	No
		Soybeans	May Contain
		Sulphur Dioxide and Sulphites	No

Risk Source:

Oats (Risk Source)	Factory	Rye (Risk Source)	Factory
Eggs (Risk Source)	Line	Tree Nuts (Risk Source)	Factory
Almond nuts (Risk Source)	Factory	Hazelnuts (Risk Source)	Factory
Soybeans (Risk Source)	Factory		

Allergen Statement On Pack

Made in a bakery that also handles Tree Nuts, Egg & Soya

SUPPLEMENTARY
INGREDIENT
INFORMATION

Palm Oil	Yes
Hydrogenated Vegetable Oil/Fat	No
GM Protein/DNA	No

ADDITIVES

Product Contains:

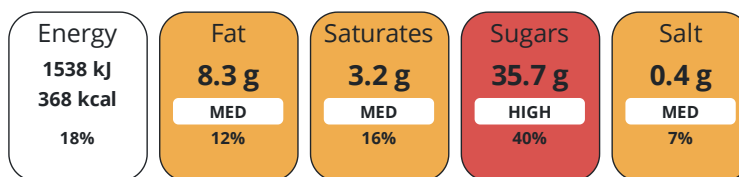
Artificial Antioxidants	No	Artificial Flavourings	No
Artificial Colours	No	Artificial Preservatives	No
Artificial Flavour Enhancers	No	Artificial Sweeteners	No

DIET
SUITABILITY

Vegan Diet	No	Vegetarian Diet	Suitable for
Halal Diet	No	Kosher Diet	No

NUTRITIONAL
INFORMATION

Each 100g/ml portion contains:



of your reference intake.

Typical values per 100g/ml : Energy 368kcal / 1538kj

Nutrient	per 100g	RI per 100g
Energy (kJ)	1538 kJ	18%
Energy (kcal)	368 kcal	18%
Fat	8.3 g	12%
of which Saturates	3.2 g	16%
Carbohydrate	66.6 g	26%
of which Sugars	35.7 g	40%
Protein	6 g	12%
Salt	0.4 g	7%

Source of Nutritional Information Calculation based on known values of ingredients

SUPPLEMENTARY
NUTRITIONAL
INFORMATION

HFSS (HIGH IN
FAT, SALT AND
SUGAR)
HANDLING &
STORAGE
INFORMATION

HFSS Status	Yes
--------------------	-----

Directions For Use

Defrost at ambient for approximately 2 hours prior to serving

Storage Instructions

Store at or below -18°C for up to 18 months from manufacture

Shelf Life from Time of Production	547 Days	Exempt From Shelf Life Labelling	No
Shelf Life Once Defrosted	5 Days		

ACCREDITATIONS/
CERTIFICATIONS/
ASSURANCE
SCHEMES



ORIGIN	Product Country of Origin/Place of Provenance		United Kingdom				
	Additional Origin Details						
	UK						
PRODUCT CHARACTERISTICS	Standards Testing						
	Do you undertake trend analysis of microbiological results?		No		Is shelf life testing undertaken?		Yes
					Commercially Sterile		No
SUPPLEMENTARY INFORMATION							
Fried During Manufacture		No					
HAZARD CONTROLS							
Metal Detection		Yes					
CONFIGURATION	Case Configuration			Inner Pack Configuration			
	Variable Inner Components in Outer Case		No				
	Total Quantity of Inner Components in Outer Case		36 Units				
	Is the Outer Case Splittable?		No				
PRODUCT WEIGHTS	Inner Component						
	Variable Weight Consumer Item		Yes				
	Inner Component Weight		44 g				
	Outer Case						
	Outer Case Gross Weight		1.72 kg				
	Outer Case Net Weight		1.59 kg				
PRODUCT DIMENSIONS	Inner Component						
	Inner Component Depth		150 mm				
	Inner Component Width		100 mm				
	Inner Component Height		10 mm				
	Outer Case						
	Outer Case Depth		205 mm				
	Outer Case Width		390 mm				
	Outer Case Height		105 mm				
	PALLET INFORMATION	Quantity of Cases Per Pallet Layer		15 Cases		Pallet Height	
Quantity of Layers Per Pallet		12 Layers		Pallet Gross Weight		310 kg	
Quantity of Cases Per Pallet		180 Cases					
PACKAGING	Inner Component Packaging						
	Type	Materials	Weight	Recycled Plastic %	Recyclable	Returnable	Composite
	Film	Plastic / OPP (Oriented Polypropylene)	1 g	0.00 %		No	No
	Outer Case Packaging						
	Type	Materials	Weight	Recycled Plastic %	Recyclable	Returnable	Composite
	Case	Plastic / OPP (Oriented Polypropylene)	36 g	0 %		No	Yes
	Case	Paper/Cardboard / Cardboard	200 g	- %	Yes	No	No

Transport Packaging

Type	Materials	Weight	Recycled Plastic %	Recyclable	Returnable	Composite
Pallet	Wood	2800 g	- %		Yes	
Pallet Wrap	Plastic / PE (Polyethylene)	250 g	0 %		No	

OTHER INFORMATION

Commodity Code	1905203000	Value Added Tax Rate	No VAT
Meursing Code	7012		

CONTACT INFORMATION

Address

Martins Craft Bakery Ltd
 30 Holyoak Street
 Newton Heath
 Manchester
 M40 1HB
 England

P. (Phone) 0161 688 5588

The information on the [Erudus System](#) has been supplied by the manufacturers of the products and, whilst the owners of the Erudus System take steps to ensure the information is regularly updated, they give no warranty and no guarantee that the information is accurate. Product information and ingredients may change, please always read product labels carefully in addition to using the information provided by Erudus.

We do not accept liability for any inaccuracies or incorrect information contained on this site.
 Please visit <http://www.erudus.com/terms-and-conditions> for full terms and conditions.