

Changed Apr 24, 2024 13:44

Reviewed Apr 24, 2024 13:44

Erudus ID 0116e278cea343ad99705648561d2e32

Version 3.0

00282

Smoothelicious Strawberry Split 30x140g

Strawberry Split

PRODUCT DESCRIPTION

Mixed bag of IQF strawberries and IQF sliced bananas

Brand	Newberry International Produce Ltd
Manufacturer Product Code	SLSS2
Product Type	Food
Product Category	Smoothie Mix
Storage Type	Frozen
Erudus ID	0116e278cea343ad99705648561d2e32
Specification Type	Fruit and Vegetables



RECEIVED

Thomas Ridley QC Dept.
3:51 pm, 24 Apr 2024

The food information supplied by Thomas Ridley Foodservice has been provided by the respective product manufacturer. Whilst we use reasonable endeavours to check this information and ensure its accuracy, we do not give any warranty (whether express or implied), guarantee or representation that it is true, accurate or complete in any respect.

As product information, ingredients, nutritional guides and dietary or allergy advice may change from time to time, we recommend that you always carefully read the product label prior to using or consuming any such products. You should not solely rely upon the information we provide and make your own assessment as to the suitability or otherwise of any given product.



Outer Case GTIN 5056139610073



INGREDIENTS

Ingredient Declaration

Strawberry, Banana

ALLERGENS

Product Contains:

Celery/Celeriac	No	Mustard	No
Cereals Containing Gluten	No	Nuts (Tree)	No
Barley	No	Almond nuts	No
Oats	No	Brazil nuts	No
Rye	No	Cashew nuts	No
Wheat (including Spelt and Khorasan)	No	Hazelnuts	No
Crustacea	No	Macadamia (Queensland) nuts	No
Eggs	No	Pecan nuts	No
Fish	No	Pistachio nuts	No
Lupin	No	Walnuts	No
Milk	No	Peanuts	No
Molluscs	No	Sesame Seeds	No
		Soybeans	No
		Sulphur Dioxide and Sulphites	No

Additional Allergen Information

No allergen statement required. No finished product allergen testing completed.

SUPPLEMENTARY INGREDIENT INFORMATION

Palm Oil	No
Hydrogenated Vegetable Oil/Fat	No
GM Protein/DNA	No

ADDITIVES

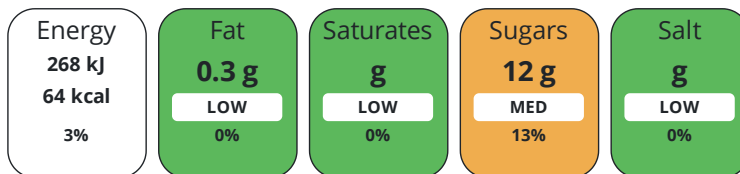
Product Contains:

Artificial Antioxidants	No	Artificial Flavourings	No
Artificial Colours	No	Artificial Preservatives	No
Artificial Flavour Enhancers	No	Artificial Sweeteners	No
Vegan Diet	Suitable for	Vegetarian Diet	Suitable for
Halal Diet	No	Kosher Diet	No

DIET
SUITABILITY

NUTRITIONAL
INFORMATION

Each 100g/ml portion contains:



of your reference intake.

Typical values per 100g/ml : Energy 64kcal / 268kj

Nutrient	per 100g	RI per 100g	per 140g serving	RI per 140g serving
Energy (kJ)	268 kJ	3%	375.2 kJ	4%
Energy (kcal)	64 kcal	3%	89.6 kcal	4%
Fat	0.3 g	0%	0.4 g	1%
of which Saturates	0 g	0%	-	
Carbohydrate	13 g	5%	18.2 g	7%
of which Sugars	12 g	13%	16.8 g	19%
Fibre	2.6 g		3.6 g	
Protein	0.8 g	2%	1.1 g	2%
Salt	0 g	0%	-	

Serving Size 140 g

SUPPLEMENTARY
NUTRITIONAL
INFORMATION

Trans Fats per 100 g/ml 0 g

HANDLING &
STORAGE
INFORMATION

Directions For Use

Blend with 250 - 350ml of Liquid

Storage Instructions

Store at -18 Degrees

Shelf Life from Time of Production 730 Days **Exempt From Shelf Life Labelling** No

ACCREDITATIONS/
CERTIFICATIONS/
ASSURANCE
SCHEMES
ORIGIN

BRCGS Certified

Product Country of Origin/Place of Poland

Provenance

Additional Origin Details

Country of manufacture is Poland.

PRODUCT
CHARACTERISTICS

Standards Testing

Do you undertake trend analysis of microbiological results? Yes **Is shelf life testing undertaken?** No

Microbiological Standards

Organism	Description	Frequency	Target	Maximum	Sample (g or ml)
Total Viable Count (TVC) (cfu/g or ml)	cfu/g	Occasionally	<100000	1000000	1
Salmonella (cfu/g or ml)	per 25g	Occasionally	<0	0	25
Coliforms (cfu/g or ml)	cfu/g	Occasionally	<100	10000	1
E. Coli (cfu/g or ml)	cfu/g	Occasionally	<10	100	1
Listeria Monocytogenes (cfu/g or ml)	per 25g	Occasionally	<0	100	25
Yeast (cfu/g or ml)	cfu/g	Occasionally	<1000	100000	1
Moulds (cfu/g or ml)	cfu/g	Occasionally	<1000	100000	1

CONFIGURATION

Case Configuration	Inner Pack Configuration
Total Quantity of Inner Components in Outer Case	30 Units

PRODUCT WEIGHTS

Inner Component	
Variable Weight Consumer Item	Yes
Inner Component Weight	140 g
Outer Case	
Outer Case Gross Weight	4.5 kg
Outer Case Net Weight	4.2 kg

PRODUCT DIMENSIONS

Inner Component	
Inner Component Depth	165 mm
Inner Component Width	1 mm
Inner Component Height	170 mm
Outer Case	
Outer Case Depth	325 mm
Outer Case Width	245 mm
Outer Case Height	155 mm

PALLET INFORMATION

Quantity of Cases Per Pallet Layer	14 Cases	Pallet Height	1.8 MTR
Quantity of Layers Per Pallet	10 Layers		
Quantity of Cases Per Pallet	140 Cases		

PACKAGING

Inner Component Packaging						
Type	Materials	Weight	Recycled Plastic %	Recyclable	Returnable	Composite
Film	Plastic	3 g	- %			
Outer Case Packaging						
Type	Materials	Weight	Recycled Plastic %	Recyclable	Returnable	Composite
Case	Paper/Cardboard	226 g	- %			
Transport Packaging						
Type	Materials	Weight	Recycled Plastic %	Recyclable	Returnable	Composite
Other	Wood	25000 g	- %			

OTHER INFORMATION

CONTACT
INFORMATION

Address

Newberry International Produce Ltd
Unit 6-7
Newent Business Park
Newent
Gloucestershire
GL18 1DZ
United Kingdom

P. (Phone) 01531 828453

The information on the [Erudus System](#) has been supplied by the manufacturers of the products and, whilst the owners of the Erudus System take steps to ensure the information is regularly updated, they give no warranty and no guarantee that the information is accurate. Product information and ingredients may change, please always read product labels carefully in addition to using the information provided by Erudus.

We do not accept liability for any inaccuracies or incorrect information contained on this site.
Please visit <http://www.erudus.com/terms-and-conditions> for full terms and conditions.