


Changed Apr 03, 2024 15:10

Reviewed Apr 03, 2024 15:10

Erudus ID 8b5c32d9eded4004a6f9821ece8ae0a2

Version 3.0



RECEIVED

Thomas Ridley QC Dept.
11:29 am, 5 Apr 2024

The food information supplied by Thomas Ridley Foodservice has been provided by the respective product manufacturer. Whilst we use reasonable endeavours to check this information and ensure its accuracy, we do not give any warranty (whether express or implied), guarantee or representation that it is true, accurate or complete in any respect.

As product information, ingredients, nutritional guides and dietary or allergy advice may change from time to time, we recommend that you always carefully read the product label prior to using or consuming any such products. You should not solely rely upon the information we provide and make your own assessment as to the suitability or otherwise of any given product.



00344

EARL GREY & BLACKCURRANT CAKE 14 slices

Earl Grey & Blackcurrant Cake

PRODUCT DESCRIPTION

A golden sponge with English Tea and Bergamot flavouring, laced with sultanas (infused with Earl Grey tea). Topped and filled with a creamy buttercream and sharp blackcurrant jam.

Brand	The Handmade Cake Co.
Manufacturer Product Code	075957
Product Type	Food
Product Category	Cakes and Tarts
Storage Type	Frozen
Erudus ID	8b5c32d9eded4004a6f9821ece8ae0a2
Specification Type	Bakery Products



Outer Case GTIN 5060044075957



INGREDIENTS

Ingredient Declaration

Sugar, **WHEAT** Flour (with Calcium Carbonate, Niacin, Iron, Thiamin), Vegetable Margarine [Palm Oil, Rapeseed Oil, Water, Salt, Emulsifier (E471), Natural Flavouring], Pasteurised Free Range **EGG**, Salted Butter [Butter (**MILK**), Salt], Blackcurrant Jam (8%) [Glucose Syrup, Sugar, Blackcurrant Puree, Gelling Agent (Pectin), Acidity Regulators (Citric Acid, Trisodium Citrate), Colour (Anthocyanins)], Brown Sugar [Sugar, Cane Molasses], Sultanas (2.9%), Earl Grey Tea (1.6%) [Tea, Bergamot Flavouring, Natural Lemon Flavouring with other Natural Flavourings], Water, Baking Powder [Raising Agents (E575, E500(ii), E336(i)), Maize Starch], Flavourings (0.2%) (English Tea, Bergamot).

ALLERGENS

Product Contains:

Celery/Celериac	No	Mustard	No
Cereals Containing Gluten	Yes	Nuts (Tree)	May Contain
Barley	No	Almond nuts	May Contain
Oats	No	Brazil nuts	May Contain
Rye	No	Cashew nuts	May Contain
Wheat (including Spelt and Khorasan)	Yes	Hazelnuts	May Contain
Crustacea	No	Macadamia (Queensland) nuts	May Contain
Eggs	Yes	Pecan nuts	May Contain
Fish	No	Pistachio nuts	May Contain
Lupin	No	Walnuts	May Contain
Milk	Yes	Peanuts	No
Molluscs	No	Sesame Seeds	No
		Soybeans	May Contain
		Sulphur Dioxide and Sulphites	No

Risk Source:

Additional Allergen Information

For allergens, including cereals containing gluten, see ingredients in BOLD. This product may contain traces of nuts and soya as it has been made in a bakery that uses these ingredients.

SUPPLEMENTARY
INGREDIENT
INFORMATION

Palm Oil	Yes
Hydrogenated Vegetable Oil/Fat	No
GM Protein/DNA	No

ADDITIVES

Product Contains:

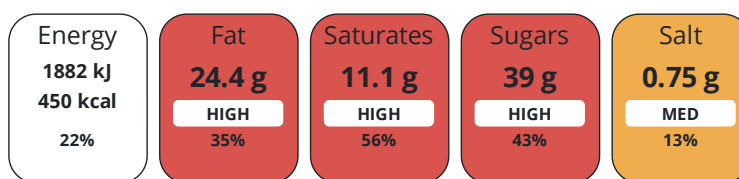
Artificial Antioxidants	No	Artificial Flavourings	No
Artificial Colours	No	Artificial Preservatives	No
Artificial Flavour Enhancers	No	Artificial Sweeteners	No

DIET
SUITABILITY

Vegan Diet	No	Vegetarian Diet	Suitable for
Halal Diet	No	Kosher Diet	No

NUTRITIONAL
INFORMATION

Each 100g/ml portion contains:



of your reference intake.

Typical values per 100g/ml : Energy 450kcal / 1882kj

Nutrient	per 100g	RI per 100g	per 110g serving	RI per 110g serving
Energy (kJ)	1882 kJ	22%	2070.2 kJ	25%
Energy (kcal)	450 kcal	23%	495 kcal	25%
Fat	24.4 g	35%	26.8 g	38%
of which Saturates	11.1 g	56%	12.2 g	61%
Carbohydrate	53.5 g	21%	58.9 g	23%
of which Sugars	39 g	43%	42.9 g	48%
Fibre	0.9 g		1 g	
Protein	4.2 g	8%	4.6 g	9%
Salt	0.75 g	13%	0.8 g	13%
Serving Size	110 g			

SUPPLEMENTARY
NUTRITIONAL
INFORMATION

HANDLING &
STORAGE
INFORMATION

Directions For Use

•Defrost in film at room temperature for approximately 4 hours •Serve at room temperature •Once defrosted store in a cool dry place •Do not refreeze once defrosted •Consume within 3 days

Storage Instructions

Store at -18°C. Once defrosted store in a cool dry place.

Shelf Life from Time of Production	365 Days	Exempt From Shelf Life Labelling	No
---	----------	---	----

ACCREDITATIONS/
CERTIFICATIONS/
ASSURANCE
SCHEMES
ORIGIN

BRCGS Certified	Roundtable of Sustainable Palm Oil (RSPO)
------------------------	--

Product Country of Origin/Place of	United Kingdom
---	----------------

Provenance

Standards Testing

PRODUCT
CHARACTERISTICS

	Do you undertake trend analysis of microbiological results?	Yes	Is shelf life testing undertaken?	Yes			
	Microbiological Standards						
	Organism	Description	Frequency	Target	Maximum	Sample (g or ml)	
	Enterobacteriaceae (cfu/g or ml)		Annually	<10	100	1	
	Staphylococcus Aureus (cfu/g or ml)		Annually	<200	10000	1	
	Salmonella (cfu/g or ml)	Present/absent per 25g	Annually	=0	0	25	
	Yeast (cfu/g or ml)		Annually	<100	10000	1	
	Moulds (cfu/g or ml)		Annually	<100	10000	1	
	Physical Standards						
	Test	Description	Frequency	Target	Range	Sample (g or ml)	
	Dimensions Height (mm)	3 per batch	Every Batch	<60	60 to 80	1550	
	Weight (g)	3 per batch	Every Batch	<1550	1550 to 1750	1550	
CONFIGURATION	Case Configuration		Inner Pack Configuration				
	Total Quantity of Inner Components in Outer Case	1 Units					
	Is the Outer Case Splittable?	No					
PRODUCT WEIGHTS	Inner Component						
	Variable Weight Consumer Item	Yes					
	Outer Case						
	Outer Case Gross Weight	1.73 kg					
	Outer Case Net Weight	1.55 kg					
PRODUCT DIMENSIONS	Inner Component						
	Inner Component Depth	259 mm					
	Inner Component Width	60 mm					
	Inner Component Height	259 mm					
	Outer Case						
	Outer Case Depth	259 mm					
	Outer Case Width	259 mm					
	Outer Case Height	96 mm					
PALLET INFORMATION	Quantity of Cases Per Pallet Layer	12 Cases		Pallet Height	1.3 MTR		
	Quantity of Layers Per Pallet	12 Layers		Pallet Gross Weight	270.32 kg		
	Quantity of Cases Per Pallet	144 Cases					
PACKAGING	Inner Component Packaging						
	Type	Materials	Weight	Recycled Plastic %	Recyclable	Returnable	Composite
	Film	Plastic	3 g	- %			
	Film	Paper/Cardboard	59 g	- %			
	Outer Case Packaging						
	Type	Materials	Weight	Recycled Plastic %	Recyclable	Returnable	Composite
	Case	Paper/Cardboard	128 g	- %			

Transport Packaging

Type	Materials	Weight	Recycled Plastic %	Recyclable	Returnable	Composite
Other	Plastic	0.7 g	- %			
Other	Paper/Cardboard	0.7 g	- %			
Other	Wood	145.8 g	- %			

OTHER INFORMATION

Manufacturer Comments

Transit packaging is given per case based on a full pallet load

CONTACT INFORMATION

Address

The Handmade Cake Co.
The Bakery
Gardner Road
Maidenhead
Berkshire
SL6 7TU
United Kingdom

P. (Phone) 01628 770908

Complaints Contact

Technical Team
Maidenhead.Technical@mdesserts.com

P. (Phone) 01628 770908 Ext. 1052

Technical Contact

Technical Team
Maidenhead.Technical@mdesserts.com

P. (Phone) 01628 770908 Ext. 1052

The information on the [Erudus System](#) has been supplied by the manufacturers of the products and, whilst the owners of the Erudus System take steps to ensure the information is regularly updated, they give no warranty and no guarantee that the information is accurate. Product information and ingredients may change, please always read product labels carefully in addition to using the information provided by Erudus.

We do not accept liability for any inaccuracies or incorrect information contained on this site.
Please visit <http://www.erudus.com/terms-and-conditions> for full terms and conditions.