

00352

DAWN COMPOUND ORANGE 4X1KG

Dawn Compound Orange 4x1kg

PRODUCT DESCRIPTION

Natural Orange flavouring

Brand	Dawn Foods
Manufacturer Product Code	2.02001.320
Product Type	Food
Product Category	Bakery - General
Storage Type	Ambient
Erudus ID	27c8de32d4364e6fa5684a2249e9e81c
Specification Type	Legacy



Inner Component GTIN 5414296063093

Outer Case GTIN 5414296063109



INGREDIENTS

Ingredient Declaration

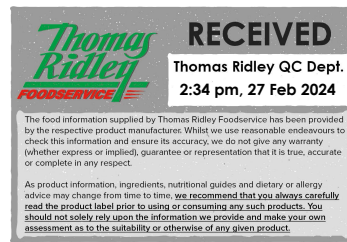
Flavouring components: flavouring preparations, natural flavouring substance. Further ingredients: sugar, glucose syrup, water, glucose-fructose syrup., acid: citric acid., orange juice concentrate (4%), modified starch (maize), gelling agent: pectin., colouring foods: concentrates (safflower, lemon).

ALLERGENS

Product Contains:

Celery/Celeriac	No	Mustard	No
Cereals Containing Gluten	No	Nuts (Tree)	No
Barley	No	Almond nuts	No
Oats	No	Brazil nuts	No
Rye	No	Cashew nuts	No
Wheat (including Spelt and Khorasan)	No	Hazelnuts	No
Gluten content <20ppm	Yes	Macadamia (Queensland) nuts	No
Crustacea	No	Pecan nuts	No
Eggs	May Contain	Pistachio nuts	No
Fish	No	Walnuts	No
Lupin	No	Peanuts	No
Milk	May Contain	Sesame Seeds	No
Molluscs	No	Soybeans	May Contain
		Sulphur Dioxide and Sulphites	No

Risk Source:



SUPPLEMENTARY
INGREDIENT
INFORMATION

Palm Oil	No
Hydrogenated Vegetable Oil/Fat	No
GM Protein/DNA	No

Alcoholic Strength %Vol (ABV)	0 % Vol
--------------------------------------	---------

ADDITIVES

Product Contains:

Artificial Antioxidants	No
Artificial Colours	No
Artificial Flavour Enhancers	No

Artificial Flavourings	No
Artificial Preservatives	No
Artificial Sweeteners	No

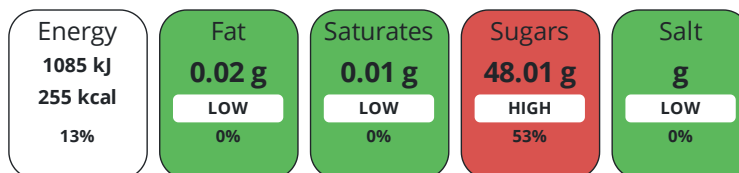
DIET
SUITABILITY

Suitable for Coeliacs	Yes
Kosher Diet	No
Vegan Diet	Suitable for

Halal Diet	Suitable for
Vegetarian Diet	Suitable for

NUTRITIONAL
INFORMATION

Each 100g/ml portion contains:



of your reference intake.

Typical values per 100g/ml : Energy 255kcal / 1085kj

Nutrient	per 100g/ml	RI per 100g/ml
Energy (kJ)	1085 kJ	13%
Energy (kcal)	255 kcal	13%
Fat	0.02 g	0%
of which Saturates	0.01 g	0%
Carbohydrate	63.54 g	24%
of which Sugars	48.01 g	53%
Protein	0.15 g	0%
Salt	0 g	0%

SUPPLEMENTARY
NUTRITIONAL
INFORMATION

HANDLING &
STORAGE
INFORMATION

Directions For Use

Recommended dosage: 40-60: 1000

Storage Instructions

Preferably keep cool

Shelf Life from Time of Production 730 Days

ACCREDITATIONS/
CERTIFICATIONS/
ASSURANCE
SCHEMES



ORIGIN

Product Country of Origin/Place of Provenance Belgium

PRODUCT
CHARACTERISTICS

Standards Testing

Do you undertake trend analysis of microbiological results? No

Is shelf life testing undertaken? No

CONFIGURATION	Case Configuration		Inner Pack Configuration				
	Total Quantity of Inner Components in Outer Case	4 Units					
	Is the Outer Case Splittable?	Yes					
PRODUCT WEIGHTS	Inner Component						
	Variable Weight Consumer Item	No					
	Weight/Volume						
	1.000						
	Outer Case						
PRODUCT DIMENSIONS	Outer Case Gross Weight	4.53 kg					
	Outer Case Net Weight	4 kg					
	Inner Component						
	Inner Component Depth	97 mm					
	Inner Component Width	97 mm					
	Inner Component Height	169 mm					
	Outer Case						
	Outer Case Depth	204 mm					
	Outer Case Width	204 mm					
	Outer Case Height	186 mm					
PALLET INFORMATION	Quantity of Cases Per Pallet Layer	24 Cases	Pallet Height	1.27 MTR			
	Quantity of Layers Per Pallet	6 Layers					
	Quantity of Cases Per Pallet	144 Cases					
PACKAGING	Inner Component Packaging						
	Type	Materials	Weight	Recycled Plastic %	Recyclable	Returnable	Composite
	Carton	Plastic	92 g	- %			
	Carton	Paper/Cardboard	5 g	- %			
	Carton	Aluminium	2 g	- %			
	Outer Case Packaging						
	Type	Materials	Weight	Recycled Plastic %	Recyclable	Returnable	Composite
	Case	Paper/Cardboard	128 g	- %			
	Case	Other	1 g	- %			
	OTHER INFORMATION	Intrastat/Taric Code	33021090				
		Address					
	CONTACT INFORMATION	Dawn Foods					
		Worcester Road					
Evesham							
Worcestershire							
WR11 4QU							
England							
P: (Phone) 01386 760800							

The information on the [Erudus System](#) has been supplied by the manufacturers of the products and, whilst the owners of the Erudus System take steps to ensure the information is regularly updated, they give no warranty and no guarantee that the information is accurate. Product information and ingredients may change, please always read product labels carefully in addition to using the information provided by Erudus.

We do not accept liability for any inaccuracies or incorrect information contained on this site.
Please visit <http://www.erudus.com/terms-and-conditions> for full terms and conditions.