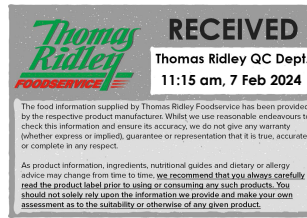


Changed Feb 07, 2024 10:55

Reviewed Feb 07, 2024 10:55

Erudus ID bc07d8145a184f80b46a3c427e35fecb

Version 2.0



RECEIVED
Thomas Ridley QC Dept.
11:15 am, 7 Feb 2024

The food information supplied by Thomas Ridley Foodservice has been provided by the respective product manufacturer. Whilst we use reasonable endeavours to check this information and ensure its accuracy, we do not give any warranty (whether express or implied), guarantee or representation that it is true, accurate or complete in any respect.

As product information, ingredients, nutritional guides and dietary or allergy advice may change from time to time, we recommend that you always carefully read the product label prior to using or consuming any such products. You should not solely rely upon the information we provide and make your own assessment as to the suitability or otherwise of any given product.



GLUTEN FREE CAPPUCCINO CAKE 14 slices

Gluten Free Cappuccino Cake 1x1400g

PRODUCT DESCRIPTION

A light and moist, gluten free coffee sponge filled and topped with coffee icing and decorated with milk chocolate flakes

| | |
|---------------------------|----------------------------------|
| Brand | The Handmade Cake Co. |
| Manufacturer Product Code | 075827 |
| Product Type | Food |
| Product Category | Cakes and Tarts |
| Storage Type | Frozen |
| Erudus ID | bc07d8145a184f80b46a3c427e35fecb |
| Specification Type | Bakery Products |



Outer Case GTIN 5060044075827



INGREDIENTS

Ingredient Declaration

Sugar, Vegetable Margarine [Palm Oil, Rapeseed Oil, Water, Salt, Emulsifier (E471), Natural Flavouring], Pasteurised Free Range **EGG**, Gluten Free Flour (Rice, Potato, Tapioca, Maize, Buckwheat), Milk Chocolate Flakes (0.9%) [Sugar, Cocoa Mass, Cocoa Butter, Whole **MILK** Powder, Skimmed **MILK** Powder, Emulsifier (**SOYA** Lecithin), Natural Vanilla Flavouring], Coffee Powder (0.9%), Baking Powder [Raising Agents (E575, E500(ii), E336(i)), Maize Starch], Coffee Extract (0.5%) [Coffee, Water, Sugar], Skimmed **MILK** Powder, Stabiliser (Xanthan Gum), Natural Flavouring.

ALLERGENS

Product Contains:

| | | | |
|---|-----|--------------------------------------|-------------|
| Celery/Celery | No | Mustard | No |
| Cereals Containing Gluten | No | Nuts (Tree) | May Contain |
| Barley | No | Almond nuts | May Contain |
| Oats | No | Brazil nuts | May Contain |
| Rye | No | Cashew nuts | May Contain |
| Wheat (including Spelt and Khorasan) | No | Hazelnuts | May Contain |
| Crustacea | No | Macadamia (Queensland) nuts | May Contain |
| Eggs | Yes | Pecan nuts | May Contain |
| Fish | No | Pistachio nuts | May Contain |
| Lupin | No | Walnuts | May Contain |
| Milk | Yes | Peanuts | No |
| Molluscs | No | Sesame Seeds | No |
| | | Soybeans | Yes |
| | | Sulphur Dioxide and Sulphites | No |

Risk Source:

| | | | |
|----------------------------------|--------------|-------------------------------------|--------------|
| Tree Nuts (Risk Source) | Raw Material | Almond nuts (Risk Source) | Factory |
| Brazil nuts (Risk Source) | Raw Material | Cashew nuts (Risk Source) | Raw Material |
| Hazelnuts (Risk Source) | Factory | Macadamia nuts (Risk Source) | Raw Material |
| Pecan nuts (Risk Source) | Factory | Pistachio nuts (Risk Source) | Factory |
| Walnuts (Risk Source) | Factory | | |

SUPPLEMENTARY
INGREDIENT
INFORMATION

| | |
|---------------------------------------|-----|
| Palm Oil | Yes |
| Hydrogenated Vegetable Oil/Fat | No |
| GM Protein/DNA | No |

ADDITIVES

Product Contains:

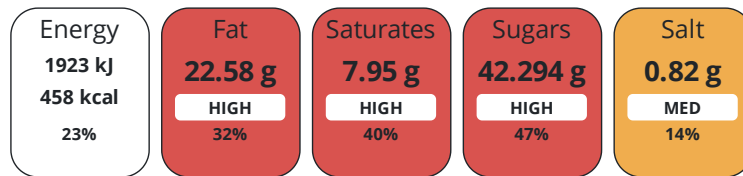
| | | | |
|-------------------------------------|----|---------------------------------|----|
| Artificial Antioxidants | No | Artificial Flavourings | No |
| Artificial Colours | No | Artificial Preservatives | No |
| Artificial Flavour Enhancers | No | Artificial Sweeteners | No |

DIET
SUITABILITY

| | | | |
|-------------------|----|------------------------|--------------|
| Vegan Diet | No | Vegetarian Diet | Suitable for |
| Halal Diet | No | Kosher Diet | No |

NUTRITIONAL
INFORMATION

Each 106g/ml serving contains:



of your reference intake.

Typical values per 106g/ml : Energy 458kcal / 1923kj

| Nutrient | per 100g | RI per 100g | per 106g serving | RI per 106g serving |
|---------------------------|----------|-------------|------------------|---------------------|
| Energy (kJ) | 1814 kJ | 22% | 1922.8 kJ | 23% |
| Energy (kcal) | 432 kcal | 22% | 457.9 kcal | 23% |
| Fat | 21.3 g | 30% | 22.6 g | 32% |
| of which Saturates | 7.5 g | 38% | 8 g | 40% |
| Carbohydrate | 56.3 g | 22% | 59.7 g | 23% |
| of which Sugars | 39.9 g | 44% | 42.3 g | 47% |
| Fibre | 0.5 g | | 0.5 g | |
| Protein | 3.8 g | 8% | 4 g | 8% |
| Salt | 0.77 g | 13% | 0.8 g | 13% |

| | |
|---------------------------------|-------------------|
| Serving Size | 106 g |
| Serving Size Description | One slice of cake |
| Number of Servings | 14 Servings |

Source of Nutritional Information Calculation from known/accepted datasets

SUPPLEMENTARY
NUTRITIONAL
INFORMATION

HFSS (HIGH IN
FAT, SALT AND
SUGAR)

| | |
|--------------------|-----|
| HFSS Status | Yes |
| HFSS Score | 25 |

HANDLING & STORAGE INFORMATION

Directions For Use

• Remove wrapping before defrosting. • Defrost at room temperature for 4 hours. • Serve at room temperature. • Once defrosted store in a cool dry place. • Do not refreeze once defrosted. • Consume within 3 days.

Storage Instructions

Store at -18°C. Once defrosted store in a cool dry place.

| | | | |
|---|----------|---|----|
| Shelf Life from Time of Production | 356 Days | Exempt From Shelf Life Labelling | No |
|---|----------|---|----|

ACCREDITATIONS/ CERTIFICATIONS/ ASSURANCE SCHEMES



ORIGIN

Product Country of Origin/Place of United Kingdom

Provenance

Standards Testing

PRODUCT CHARACTERISTICS

| | | | |
|--|----|--|-----|
| Do you undertake trend analysis of microbiological results? | No | Is shelf life testing undertaken? | Yes |
|--|----|--|-----|

Microbiological Standards

| Organism | Description | Frequency | Target | Maximum | Sample (g or ml) |
|-------------------------------------|-------------|-----------|--------|---------|------------------|
| Enterobacteriaceae (cfu/g or ml) | | Annually | <100 | 10000 | 1 |
| Staphylococcus Aureus (cfu/g or ml) | | Annually | <20 | 10000 | 1 |
| Salmonella (cfu/g or ml) | | Annually | <0 | 0 | 25 |
| Yeast (cfu/g or ml) | | Annually | <100 | 10000 | 1 |
| Moulds (cfu/g or ml) | | Annually | <100 | 10000 | 1 |

CONFIGURATION

Case Configuration

Inner Pack Configuration

| | |
|---|---------|
| Total Quantity of Inner Components in Outer Case | 1 Units |
| Is the Outer Case Splittable? | No |

PRODUCT WEIGHTS

Inner Component

| | |
|--------------------------------------|--------|
| Variable Weight Consumer Item | No |
| Inner Component Weight | 1400 g |
| e mark | No |

Outer Case

| | |
|--------------------------------|---------|
| Outer Case Gross Weight | 1.57 kg |
| Outer Case Net Weight | 1.4 kg |

PRODUCT DIMENSIONS

Inner Component

| | |
|-------------------------------|--------|
| Inner Component Depth | 236 mm |
| Inner Component Width | 70 mm |
| Inner Component Height | 236 mm |

Outer Case

| | |
|--------------------------|--------|
| Outer Case Depth | 236 mm |
| Outer Case Width | 236 mm |
| Outer Case Height | 94 mm |

PALLET
INFORMATION

| | | | |
|---|-----------|----------------------------|---------|
| Quantity of Cases Per Pallet Layer | 16 Cases | Pallet Height | 1.2 MTR |
| Quantity of Layers Per Pallet | 10 Layers | Pallet Gross Weight | 277 kg |
| Quantity of Cases Per Pallet | 160 Cases | | |

PACKAGING

Inner Component Packaging

| Type | Materials | Weight | Recycled Plastic % | Recyclable | Returnable | Composite |
|------|-----------------|--------|--------------------|------------|------------|-----------|
| Film | Plastic | 3 g | - % | | | |
| Film | Paper/Cardboard | 50 g | - % | | | |

Outer Case Packaging

| Type | Materials | Weight | Recycled Plastic % | Recyclable | Returnable | Composite |
|------|-----------------|--------|--------------------|------------|------------|-----------|
| Case | Paper/Cardboard | 119 g | - % | | | |

Transport Packaging

| Type | Materials | Weight | Recycled Plastic % | Recyclable | Returnable | Composite |
|-------|-----------------|---------|--------------------|------------|------------|-----------|
| Other | Plastic | 200 g | - % | | | |
| Other | Paper/Cardboard | 300 g | - % | | | |
| Other | Wood | 25000 g | - % | | | |

OTHER
INFORMATION
CONTACT
INFORMATION

Address

The Handmade Cake Co.
The Bakery
Gardner Road
Maidenhead
Berkshire
SL6 7TU
United Kingdom

P. (Phone) 01628 770908

Complaints Contact

Technical Team
Maidenhead.Technical@mdesserts.com

P. (Phone) 01628 770908 Ext. 1052

Technical Contact

Technical Team
Maidenhead.Technical@mdesserts.com

P. (Phone) 01628 770908 Ext. 1052

The information on the [Erudus System](#) has been supplied by the manufacturers of the products and, whilst the owners of the Erudus System take steps to ensure the information is regularly updated, they give no warranty and no guarantee that the information is accurate. Product information and ingredients may change, please always read product labels carefully in addition to using the information provided by Erudus.

We do not accept liability for any inaccuracies or incorrect information contained on this site.
Please visit <http://www.erudus.com/terms-and-conditions> for full terms and conditions.