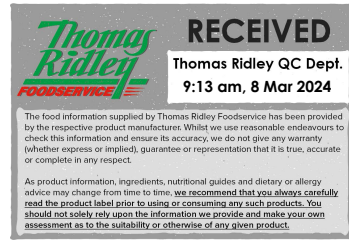


Changed Mar 08, 2024 08:47

Reviewed Mar 08, 2024 08:47

Erudus ID 2adf8b606100439f92696f96017460af

Version 3.0



00468

GLUTEN FREE CARROT CAKE 14 slices

Gluten Free Carrot Cake 1x1500g

PRODUCT DESCRIPTION

A moist gluten-free carrot and walnut sponge, covered with a full fat soft cheese icing and decorated with nibbed walnuts.

Brand	The Handmade Cake Co.
Manufacturer Product Code	075858
Product Type	Food
Product Category	Cakes and Tarts
Storage Type	Frozen
Erudus ID	2adf8b606100439f92696f96017460af
Specification Type	Bakery Products

Outer Case GTIN 5060044075858



INGREDIENTS

Ingredient Declaration

Pasteurised Free Range **EGG**, Dark Brown Sugar [Sugar, Cane Molasses], Icing Sugar, Gluten Free Flour (Rice, Potato, Tapioca, Maize, Buckwheat), Carrots (10%), Rapeseed Oil, Salted Butter [Butter (**MILK**), Salt], Sultanas (3.0%), **WALNUTS** (2.3%), Full Fat Soft Cheese (1.5%) [Full Fat Soft Cheese (**MILK**), Thickener (Guar Gum)], Baking Powder [Raising Agents (E575, E500(ii), E336(i)), Maize Starch], Desiccated Coconut, Ground Mixed Spice, Ground Cinnamon, Stabiliser (Xanthan Gum), Orange Extract.

ALLERGENS

Product Contains:

Celery/Celeriac	No	Mustard	No
Cereals Containing Gluten	No	Nuts (Tree)	Yes
Barley	No	Almond nuts	May Contain
Oats	No	Brazil nuts	May Contain
Rye	No	Cashew nuts	May Contain
Wheat (including Spelt and Khorasan)	No	Hazelnuts	May Contain
Crustacea	No	Macadamia (Queensland) nuts	May Contain
Eggs	Yes	Pecan nuts	May Contain
Fish	No	Pistachio nuts	May Contain
Lupin	No	Walnuts	Yes
Milk	Yes	Peanuts	No
Molluscs	No	Sesame Seeds	No
		Soybeans	No
		Sulphur Dioxide and Sulphites	No

Risk Source:

Additional Allergen Information

For allergens see ingredients in BOLD.

SUPPLEMENTARY
INGREDIENT
INFORMATION

Palm Oil	No
Hydrogenated Vegetable Oil/Fat	No
GM Protein/DNA	No

ADDITIVES

Product Contains:

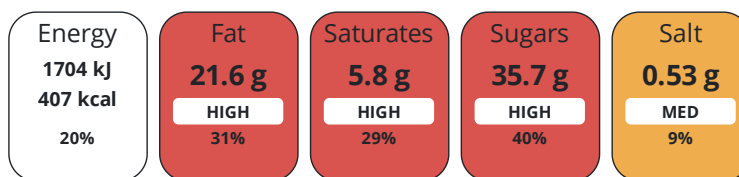
Artificial Antioxidants	No	Artificial Flavourings	No
Artificial Colours	No	Artificial Preservatives	No
Artificial Flavour Enhancers	No	Artificial Sweeteners	No

DIET
SUITABILITY

Vegan Diet	No	Vegetarian Diet	Suitable for
Halal Diet	No	Kosher Diet	No

NUTRITIONAL
INFORMATION

Each 100g/ml portion contains:



of your reference intake.

Typical values per 100g/ml : Energy 407kcal / 1704kj

Nutrient	per 100g	RI per 100g	per 112g serving	RI per 112g serving
Energy (kJ)	1704 kJ	20%	1908.5 kJ	23%
Energy (kcal)	407 kcal	20%	455.8 kcal	23%
Fat	21.6 g	31%	24.2 g	35%
of which Saturates	5.8 g	29%	6.5 g	33%
Carbohydrate	48.7 g	19%	54.5 g	21%
of which Sugars	35.7 g	40%	40 g	44%
Fibre	1.4 g		1.6 g	
Protein	3.8 g	8%	4.3 g	9%
Salt	0.53 g	9%	0.6 g	10%

Serving Size	112 g
Serving Size Description	One slice of cake
Number of Servings	14 Servings

Source of Nutritional Information Calculation from known/accepted datasets

SUPPLEMENTARY
NUTRITIONAL
INFORMATION

HFSS (HIGH IN
FAT, SALT AND
SUGAR)
HANDLING &
STORAGE
INFORMATION

HFSS Status	Yes
--------------------	-----

Directions For Use

Remove wrapping before defrosting. Defrost at room temperature for 4 hours. Serve at room temperature. Once defrosted store in a cool dry place. Do not refreeze once defrosted. Consume within 3 days.

Storage Instructions

Keep Frozen - store at -18°C.

Shelf Life from Time of Production	240 Days	Exempt From Shelf Life Labelling	No
---	----------	---	----

ORIGIN	Product Country of Origin/Place of Provenance	United Kingdom				
	Standards Testing					
PRODUCT CHARACTERISTICS	Do you undertake trend analysis of microbiological results?	Yes	Is shelf life testing undertaken?		Yes	
	Microbiological Standards					
	Organism	Description	Frequency	Target	Maximum	Sample (g or ml)
	Bacillus Cereus (cfu/g or ml)		Annually	<1000	100000	1
	Listeria SPP (cfu/g or ml)	Detected/Not detected in 25g	Annually	=0	1	25
	Staphylococcus Aureus (cfu/g or ml)		Annually	<200	100000	1
	Salmonella (cfu/g or ml)	Detected/Not detected in 25g	Annually	=0	1	25
	Physical Standards					
	Test	Description	Frequency	Target	Range	Sample (g or ml)
	Dimensions Height (mm)		Every Batch	>70	70 to 95	1500
Weight (g)		Every Batch	>1500	1500 to 2000	1500	
CONFIGURATION	Case Configuration	Inner Pack Configuration				
	Total Quantity of Inner Components in Outer Case	1 Units				
	Is the Outer Case Splittable?	No				
PRODUCT WEIGHTS	Inner Component					
	Variable Weight Consumer Item	No				
	Inner Component Weight	1500 g				
	Outer Case					
	Outer Case Gross Weight	1.66 kg				
	Outer Case Net Weight	1.5 kg				
PRODUCT DIMENSIONS	Inner Component					
	Inner Component Depth	236 mm				
	Inner Component Width	70 mm				
	Inner Component Height	236 mm				
	Outer Case					
	Outer Case Depth	239 mm				
	Outer Case Width	239 mm				
	Outer Case Height	100 mm				
	PALLET INFORMATION	Quantity of Cases Per Pallet Layer	16 Cases	Pallet Height		1.2 MTR
Quantity of Layers Per Pallet		10 Layers				
Quantity of Cases Per Pallet		160 Cases				

PACKAGING

Inner Component Packaging

Type	Materials	Weight	Recycled Plastic %	Recyclable	Returnable	Composite
Film	Plastic	3 g	- %			
Film	Paper/Cardboard	50 g	- %			

Outer Case Packaging

Type	Materials	Weight	Recycled Plastic %	Recyclable	Returnable	Composite
Case	Paper/Cardboard	119 g	- %			

OTHER INFORMATION

Intrastat/Taric Code	1905907000
Commodity Code	19059070

CONTACT INFORMATION

Address	Technical Contact
The Handmade Cake Co.	Technical Team
The Bakery	Maidenhead.Technical@mdesserts.com
Gardner Road	
Maidenhead	P: (Phone) 01628 770908 Ext. 1052
Berkshire	
SL6 7TU	
United Kingdom	

P: (Phone) 01628 770908

Complaints Contact

Technical Team
Maidenhead.Technical@mdesserts.com

P: (Phone) 01628 770908 Ext. 1052

The information on the [Erudus System](#) has been supplied by the manufacturers of the products and, whilst the owners of the Erudus System take steps to ensure the information is regularly updated, they give no warranty and no guarantee that the information is accurate. Product information and ingredients may change, please always read product labels carefully in addition to using the information provided by Erudus.

We do not accept liability for any inaccuracies or incorrect information contained on this site.
Please visit <http://www.erudus.com/terms-and-conditions> for full terms and conditions.