

00526

# DAWN COMPOUND STRAWBERRY 4X1KG

Dawn Compound Strawberry 4x1kg

## PRODUCT DESCRIPTION

Natural flavouring substances

<b>Brand</b>	Dawn Foods
<b>Manufacturer Product Code</b>	2.02014.320
<b>Product Type</b>	Food
<b>Product Category</b>	Bakery - General
<b>Storage Type</b>	Ambient
<b>Erudus ID</b>	74093f02258d479e9598f0cb63c8a765
<b>Specification Type</b>	Legacy



<b>Inner Component GTIN</b>	5414296064182
<b>Outer Case GTIN</b>	5414296064199



## INGREDIENTS

### Ingredient Declaration

Flavouring components: natural flavouring substances. Further ingredients: sugar, strawberry (26%), glucose-fructose syrup, beetroot juice concentrate, modified starch (maize), antioxidant: ascorbic acid.

## ALLERGENS

Product Contains:

<b>Celery/Celeriac</b>	No	<b>Mustard</b>	No
<b>Cereals Containing Gluten</b>	No	<b>Nuts (Tree)</b>	No
<b>Barley</b>	No	<b>Almond nuts</b>	No
<b>Oats</b>	No	<b>Brazil nuts</b>	No
<b>Rye</b>	No	<b>Cashew nuts</b>	No
<b>Wheat (including Spelt and Khorasan)</b>	No	<b>Hazelnuts</b>	No
<b>Gluten content &lt;20ppm</b>	Yes	<b>Macadamia (Queensland) nuts</b>	No
<b>Crustacea</b>	No	<b>Pecan nuts</b>	No
<b>Eggs</b>	May Contain	<b>Pistachio nuts</b>	No
<b>Fish</b>	No	<b>Walnuts</b>	No
<b>Lupin</b>	No	<b>Peanuts</b>	No
<b>Milk</b>	May Contain	<b>Sesame Seeds</b>	No
<b>Molluscs</b>	No	<b>Soybeans</b>	May Contain
		<b>Sulphur Dioxide and Sulphites</b>	No

Risk Source:

## SUPPLEMENTARY INGREDIENT INFORMATION

<b>Palm Oil</b>	No	<b>Alcoholic Strength %Vol (ABV)</b>	0 % Vol
<b>Hydrogenated Vegetable Oil/Fat</b>	No		
<b>GM Protein/DNA</b>	No		

ADDITIVES

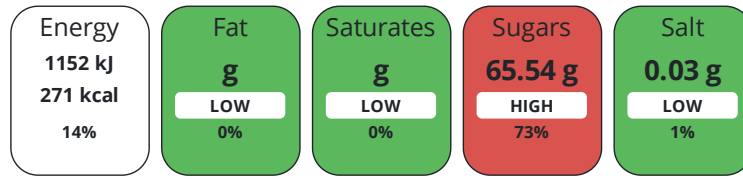
Product Contains:

<b>Artificial Antioxidants</b>	No	<b>Artificial Flavourings</b>	No
<b>Artificial Colours</b>	No	<b>Artificial Preservatives</b>	No
<b>Artificial Flavour Enhancers</b>	No	<b>Artificial Sweeteners</b>	No
<b>Suitable for Coeliacs</b>	Yes	<b>Halal Diet</b>	Suitable for
<b>Kosher Diet</b>	No	<b>Vegetarian Diet</b>	Suitable for
<b>Vegan Diet</b>	Suitable for		

DIET SUITABILITY

NUTRITIONAL INFORMATION

Each 100g/ml portion contains:



of your reference intake.

Typical values per 100g/ml : Energy 271kcal / 1152kJ

Nutrient	per 100g/ml	RI per 100g/ml
<b>Energy (kJ)</b>	1152 kJ	14%
<b>Energy (kcal)</b>	271 kcal	14%
<b>Fat</b>	0 g	0%
of which Saturates	0 g	0%
<b>Carbohydrate</b>	67.25 g	26%
of which Sugars	65.54 g	73%
<b>Protein</b>	0.36 g	1%
<b>Salt</b>	0.03 g	1%

SUPPLEMENTARY NUTRITIONAL INFORMATION

HANDLING & STORAGE INFORMATION

**Directions For Use**

Recommended dosage: 40-60: 1000

**Storage Instructions**

Preferably keep cool

**Shelf Life from Time of Production** 730 Days

ACCREDITATIONS/ CERTIFICATIONS/ ASSURANCE SCHEMES



ORIGIN

**Product Country of Origin/Place of** Belgium

**Provenance**

PRODUCT CHARACTERISTICS

Standards Testing

**Do you undertake trend analysis of microbiological results?** No

**Is shelf life testing undertaken?** No

CONFIGURATION	Case Configuration		Inner Pack Configuration				
	<b>Total Quantity of Inner Components in Outer Case</b>	4 Units					
	<b>Is the Outer Case Splittable?</b>	Yes					
PRODUCT WEIGHTS	Inner Component						
	<b>Variable Weight Consumer Item</b>	No					
	<b>Weight/Volume</b>						
	1.000						
	Outer Case						
PRODUCT DIMENSIONS	<b>Outer Case Gross Weight</b>	4.53 kg					
	<b>Outer Case Net Weight</b>	4 kg					
	Inner Component						
	<b>Inner Component Depth</b>	97 mm					
	<b>Inner Component Width</b>	97 mm					
	<b>Inner Component Height</b>	169 mm					
	Outer Case						
	<b>Outer Case Depth</b>	204 mm					
	<b>Outer Case Width</b>	204 mm					
	<b>Outer Case Height</b>	186 mm					
PALLET INFORMATION	<b>Quantity of Cases Per Pallet Layer</b>	24 Cases	<b>Pallet Height</b>	1.27 MTR			
	<b>Quantity of Layers Per Pallet</b>	6 Layers					
	<b>Quantity of Cases Per Pallet</b>	144 Cases					
PACKAGING	Inner Component Packaging						
	<b>Type</b>	<b>Materials</b>	<b>Weight</b>	<b>Recycled Plastic %</b>	<b>Recyclable</b>	<b>Returnable</b>	<b>Composite</b>
	Carton	Plastic	92 g	- %			
	Carton	Paper/Cardboard	5 g	- %			
	Carton	Aluminium	2 g	- %			
	Outer Case Packaging						
	<b>Type</b>	<b>Materials</b>	<b>Weight</b>	<b>Recycled Plastic %</b>	<b>Recyclable</b>	<b>Returnable</b>	<b>Composite</b>
	Case	Paper/Cardboard	128 g	- %			
	Case	Other	1 g	- %			
	OTHER INFORMATION	<b>Intrastat/Taric Code</b>	33021090				
CONTACT INFORMATION	Address						
	Dawn Foods						
	Worcester Road						
	Evesham						
	Worcestershire						
WR11 4QU							
England							
P: (Phone) 01386 760800							

The information on the [Erudus System](#) has been supplied by the manufacturers of the products and, whilst the owners of the Erudus System take steps to ensure the information is regularly updated, they give no warranty and no guarantee that the information is accurate. Product information and ingredients may change, please always read product labels carefully in addition to using the information provided by Erudus.

We do not accept liability for any inaccuracies or incorrect information contained on this site.  
Please visit <http://www.erudus.com/terms-and-conditions> for full terms and conditions.