

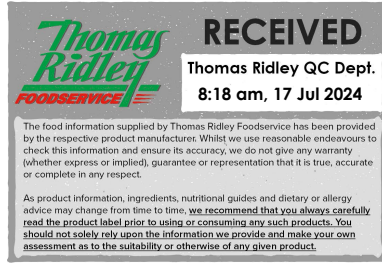
Changed Jul 16, 2024 10:38

Reviewed Jul 16, 2024 10:38

Erudus ID 78a8029fe9974255b196644cd1932e89

Version 2.0

00531



Thomas Ridley
FOODSERVICE

RECEIVED
Thomas Ridley QC Dept.
8:18 am, 17 Jul 2024

The food information supplied by Thomas Ridley Foodservice has been provided by the respective product manufacturer. Whilst we use reasonable endeavours to check this information and ensure its accuracy, we do not give any warranty (whether express or implied), guarantee or representation that it is true, accurate or complete in any respect.

As product information, ingredients, nutritional guides and dietary or allergy advice may change from time to time, we recommend that you always carefully read the product label prior to using or consuming any such products. You should not solely rely upon the information we provide and make your own assessment as to the suitability or otherwise of any given product.



Dawn Exceptional Compound Mocha 4 x 1 kg

Natural Flavouring

PRODUCT DESCRIPTION

Natural flavouring for multi-purpose application in fine patisserie

Brand	Dawn Foods
Manufacturer Product Code	2.02032.320
Product Type	Food
Product Category	Other Bakery Products
Storage Type	Ambient
Erudus ID	78a8029fe9974255b196644cd1932e89
Specification Type	Bakery Products



Inner Component GTIN 5414296063239

Outer Case GTIN 5414296063246



INGREDIENTS

Ingredient Declaration

Flavouring components: flavouring preparations, natural flavouring substances. Further ingredients: sugar, water, coffee extract 19 %, caramel sugar syrup, carrier (propylene glycol).

ALLERGENS

Product Contains:

Celery/Celериac	No	Mustard	No
Cereals Containing Gluten	No	Nuts (Tree)	No
Barley	No	Almond nuts	No
Oats	No	Brazil nuts	No
Rye	No	Cashew nuts	No
Wheat (including Spelt and Khorasan)	No	Hazelnuts	No
Crustacea	No	Macadamia (Queensland) nuts	No
Eggs	May Contain	Pecan nuts	No
Fish	No	Pistachio nuts	No
Lupin	No	Walnuts	No
Milk	May Contain	Peanuts	No
Molluscs	No	Sesame Seeds	No
		Soybeans	May Contain
		Sulphur Dioxide and Sulphites	No

Risk Source:

SUPPLEMENTARY
INGREDIENT
INFORMATION

Palm Oil	No	Alcoholic Strength %Vol (ABV)	0 % Vol
Hydrogenated Vegetable Oil/Fat	No		
GM Protein/DNA	No		

ADDITIVES

Product Contains:

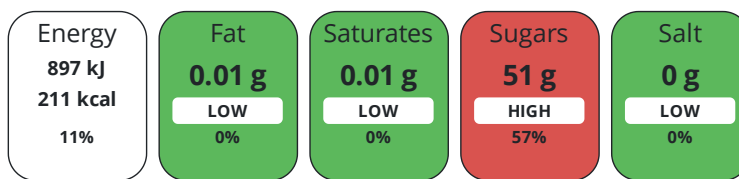
Artificial Antioxidants	No	Artificial Flavourings	No
Artificial Colours	No	Artificial Preservatives	No
Artificial Flavour Enhancers	No	Artificial Sweeteners	No

DIET
SUITABILITY

Vegan Diet	Suitable for	Vegetarian Diet	Suitable for
Halal Diet	Certified	Kosher Diet	No

NUTRITIONAL
INFORMATION

Each 100g/ml portion contains:



of your reference intake.

Typical values per 100g/ml : Energy 211kcal / 897kJ

Nutrient	per 100g	RI per 100g
Energy (kJ)	897 kJ	11%
Energy (kcal)	211 kcal	11%
Fat	0.01 g	0%
of which Saturates	0.01 g	0%
Carbohydrate	53 g	20%
of which Sugars	51 g	57%
Protein	0 g	0%
Salt	0 g	0%

SUPPLEMENTARY
NUTRITIONAL
INFORMATION

HANDLING &
STORAGE
INFORMATION

Directions For Use

Recommended dosage: 20: 1000

Storage Instructions

Preferably keep cool

Shelf Life from Time of Production 730 Days

ACCREDITATIONS/
CERTIFICATIONS/
ASSURANCE
SCHEMES
ORIGIN

BRCGS Certified

Product Country of Origin/Place of Belgium

Provenance

Standards Testing

PRODUCT
CHARACTERISTICS

Do you undertake trend analysis of microbiological results?	No	Is shelf life testing undertaken?	No
--	----	--	----

CONFIGURATION	Case Configuration	Inner Pack Configuration					
	Total Quantity of Inner Components in Outer Case	4 Units					
	Is the Outer Case Splittable?	Yes					
PRODUCT WEIGHTS	Inner Component						
	Variable Weight Consumer Item	Yes					
	Outer Case						
	Outer Case Gross Weight	4.53 kg					
PRODUCT DIMENSIONS	Outer Case Net Weight	4 kg					
	Inner Component						
	Inner Component Depth	97 mm					
	Inner Component Width	97 mm					
	Inner Component Height	169 mm					
	Outer Case						
	Outer Case Depth	204 mm					
	Outer Case Width	204 mm					
PALLET INFORMATION	Outer Case Height	186 mm					
	Quantity of Cases Per Pallet Layer	24 Cases	Pallet Height	1.27 MTR			
	Quantity of Layers Per Pallet	6 Layers					
	Quantity of Cases Per Pallet	144 Cases					
PACKAGING	Inner Component Packaging						
	Type	Materials	Weight	Recycled Plastic %	Recyclable	Returnable	Composite
	Carton	Plastic	92 g	- %			
	Carton	Paper/Cardboard	5 g	- %			
	Carton	Aluminium	2 g	- %			
	Outer Case Packaging						
	Type	Materials	Weight	Recycled Plastic %	Recyclable	Returnable	Composite
	Case	Paper/Cardboard	128 g	- %			
	Case	Other	1 g	- %			
	OTHER INFORMATION	Intrastat/Taric Code	33021090				
		Address					
	CONTACT INFORMATION	Dawn Foods					
		Worcester Road					
		Evesham					
Worcestershire							
WR11 4QU							
England							
P: (Phone) 01386 760800							

The information on the [Erudus System](#) has been supplied by the manufacturers of the products and, whilst the owners of the Erudus System take steps to ensure the information is regularly updated, they give no warranty and no guarantee that the information is accurate. Product information and ingredients may change, please always read product labels carefully in addition to using the information provided by Erudus.

We do not accept liability for any inaccuracies or incorrect information contained on this site.
Please visit <http://www.erudus.com/terms-and-conditions> for full terms and conditions.