

00538

# DAWN COMPOUND CHERRY 4X1KG

Dawn Compound Cherry 4x1kg

## PRODUCT DESCRIPTION

Natural flavouring

<b>Brand</b>	Dawn Foods
<b>Manufacturer Product Code</b>	2.02005.320
<b>Product Type</b>	Food
<b>Product Category</b>	Bakery - General
<b>Storage Type</b>	Ambient
<b>Erudus ID</b>	937ceefa399643d7a9473f30b38d4cf2
<b>Specification Type</b>	Legacy



**Inner Component GTIN** 5414296063024

**Outer Case GTIN** 5414296063031



## INGREDIENTS

### Ingredient Declaration

Flavouring components: natural flavouring substances, flavouring preparations. Further ingredients: sugar, cherry (16%), glucose syrup, glucose-fructose syrup, water., colouring foods: concentrates (grape, blueberry, carrot, blackcurrant), acid: malic acid., cherry juice concentrate (4%), acidity regulator: trisodium citrate., gelling agent: pectin.

## ALLERGENS

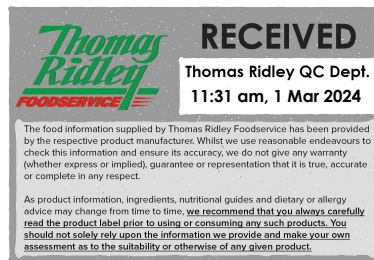
Product Contains:

<b>Celery/Celeriac</b>	No	<b>Mustard</b>	No
<b>Cereals Containing Gluten</b>	No	<b>Nuts (Tree)</b>	No
<b>Barley</b>	No	<b>Almond nuts</b>	No
<b>Oats</b>	No	<b>Brazil nuts</b>	No
<b>Rye</b>	No	<b>Cashew nuts</b>	No
<b>Wheat (including Spelt and Khorasan)</b>	No	<b>Hazelnuts</b>	No
<b>Gluten content &lt;20ppm</b>	Yes	<b>Macadamia (Queensland) nuts</b>	No
<b>Crustacea</b>	No	<b>Pecan nuts</b>	No
<b>Eggs</b>	May Contain	<b>Pistachio nuts</b>	No
<b>Fish</b>	No	<b>Walnuts</b>	No
<b>Lupin</b>	No	<b>Peanuts</b>	No
<b>Milk</b>	May Contain	<b>Sesame Seeds</b>	No
<b>Molluscs</b>	No	<b>Soybeans</b>	May Contain
		<b>Sulphur Dioxide and Sulphites</b>	No

Risk Source:

### Additional Allergen Information

Despite of highest precaution the product may contain cherry pits or pieces thereof.



SUPPLEMENTARY  
INGREDIENT  
INFORMATION

<b>Palm Oil</b>	No
<b>Hydrogenated Vegetable Oil/Fat</b>	No
<b>GM Protein/DNA</b>	No

<b>Alcoholic Strength %Vol (ABV)</b>	0 % Vol
--------------------------------------	---------

ADDITIVES

Product Contains:

<b>Artificial Antioxidants</b>	No
<b>Artificial Colours</b>	No
<b>Artificial Flavour Enhancers</b>	No

<b>Artificial Flavourings</b>	No
<b>Artificial Preservatives</b>	No
<b>Artificial Sweeteners</b>	No

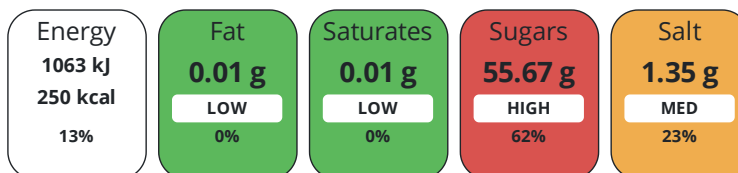
DIET  
SUITABILITY

<b>Suitable for Coeliacs</b>	Yes
<b>Kosher Diet</b>	No
<b>Vegan Diet</b>	Suitable for

<b>Halal Diet</b>	Suitable for
<b>Vegetarian Diet</b>	Suitable for

NUTRITIONAL  
INFORMATION

Each 100g/ml portion contains:



of your reference intake.

Typical values per 100g/ml : Energy 250kcal / 1063kj

Nutrient	per 100g/ml	RI per 100g/ml
<b>Energy (kJ)</b>	1063 kJ	13%
<b>Energy (kcal)</b>	250 kcal	13%
<b>Fat</b>	0.01 g	0%
of which Saturates	0.01 g	0%
<b>Carbohydrate</b>	61.95 g	24%
of which Sugars	55.67 g	62%
<b>Protein</b>	0.14 g	0%
<b>Salt</b>	1.35 g	23%

SUPPLEMENTARY  
NUTRITIONAL  
INFORMATION

HANDLING &  
STORAGE  
INFORMATION

**Directions For Use**

Recommended dosage: 40-60: 1000

**Storage Instructions**

Preferably keep cool

**Shelf Life from Time of Production** 730 Days

ACCREDITATIONS/  
CERTIFICATIONS/  
ASSURANCE  
SCHEMES



ORIGIN

**Product Country of Origin/Place of Provenance** Belgium

PRODUCT  
CHARACTERISTICS

Standards Testing

**Do you undertake trend analysis of microbiological results?** No

**Is shelf life testing undertaken?** No

CONFIGURATION	Case Configuration		Inner Pack Configuration				
	<b>Total Quantity of Inner Components in Outer Case</b>	4 Units					
	<b>Is the Outer Case Splittable?</b>	Yes					
PRODUCT WEIGHTS	Inner Component						
	<b>Variable Weight Consumer Item</b>	No					
	<b>Weight/Volume</b>						
	1.000						
	Outer Case						
PRODUCT DIMENSIONS	<b>Outer Case Gross Weight</b>	4.53 kg					
	<b>Outer Case Net Weight</b>	4 kg					
	Inner Component						
	<b>Inner Component Depth</b>	97 mm					
	<b>Inner Component Width</b>	97 mm					
	<b>Inner Component Height</b>	169 mm					
	Outer Case						
	<b>Outer Case Depth</b>	204 mm					
	<b>Outer Case Width</b>	204 mm					
	<b>Outer Case Height</b>	186 mm					
PALLET INFORMATION	<b>Quantity of Cases Per Pallet Layer</b>	24 Cases	<b>Pallet Height</b>	1.27 MTR			
	<b>Quantity of Layers Per Pallet</b>	6 Layers					
	<b>Quantity of Cases Per Pallet</b>	144 Cases					
PACKAGING	Inner Component Packaging						
	<b>Type</b>	<b>Materials</b>	<b>Weight</b>	<b>Recycled Plastic %</b>	<b>Recyclable</b>	<b>Returnable</b>	<b>Composite</b>
	Carton	Plastic	92 g	- %			
	Carton	Paper/Cardboard	5 g	- %			
	Carton	Aluminium	2 g	- %			
	Outer Case Packaging						
	<b>Type</b>	<b>Materials</b>	<b>Weight</b>	<b>Recycled Plastic %</b>	<b>Recyclable</b>	<b>Returnable</b>	<b>Composite</b>
	Case	Paper/Cardboard	128 g	- %			
	Case	Other	1 g	- %			
	OTHER INFORMATION	<b>Intrastat/Taric Code</b>	33021090				
		Address					
	CONTACT INFORMATION	Dawn Foods					
		Worcester Road					
Evesham							
Worcestershire							
WR11 4QU							
England							
P: (Phone) 01386 760800							

The information on the [Erudus System](#) has been supplied by the manufacturers of the products and, whilst the owners of the Erudus System take steps to ensure the information is regularly updated, they give no warranty and no guarantee that the information is accurate. Product information and ingredients may change, please always read product labels carefully in addition to using the information provided by Erudus.

We do not accept liability for any inaccuracies or incorrect information contained on this site.  
Please visit <http://www.erudus.com/terms-and-conditions> for full terms and conditions.