

Changed Aug 29, 2022 13:57

Erudus ID e05d2816fe4241eea56340a8aed5a070

Version 1.0

00569

70 CROISSANTS 60g

Croissants 2x

PRODUCT DESCRIPTION

Ready to bake frozen, fine butter croissants 60g

Brand	Bridor
Manufacturer Product Code	31000
Product Type	Food
Product Category	Pastry
Storage Type	Frozen
Erudus ID	e05d2816fe4241eea56340a8aed5a070
Specification Type	Legacy

Outer Case GTIN 3419280008038



INGREDIENTS

Ingredient Declaration

WHEAT flour, fine butter (**MILK**) 23%, water, yeast, sugar, **EGGS**, salt, **WHEAT** gluten, flour treatment agents (alpha-amylases, hemicellulases, ascorbic acid).

ALLERGENS

Product Contains:

Celery/Celeriac	No	Mustard	No
Cereals Containing Gluten	Yes	Nuts (Tree)	May Contain
Barley	No	Almond nuts	May Contain
Oats	No	Brazil nuts	No
Rye	No	Cashew nuts	No
Wheat (including Spelt and Khorasan)	Yes	Hazelnuts	May Contain
Gluten content <20ppm	No	Macadamia (Queensland) nuts	No
Crustacea	No	Pecan nuts	May Contain
Eggs	Yes	Pistachio nuts	May Contain
Fish	No	Walnuts	May Contain
Lupin	No	Peanuts	No
Milk	Yes	Sesame Seeds	May Contain
Molluscs	No	Soybeans	May Contain
		Sulphur Dioxide and Sulphites	No

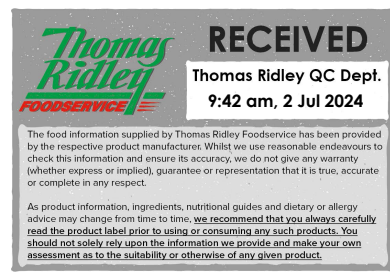
Risk Source:

Additional Allergen Information

May contain traces of: sesame seeds, soya, nuts

SUPPLEMENTARY INGREDIENT INFORMATION

Palm Oil	No
Hydrogenated Vegetable Oil/Fat	No
GM Protein/DNA	No



ADDITIVES

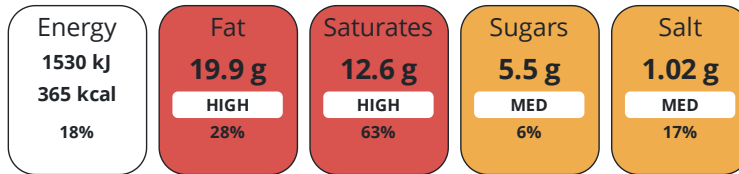
Product Contains:

Artificial Antioxidants	No	Artificial Flavourings	No
Artificial Colours	No	Artificial Preservatives	No
Artificial Flavour Enhancers	No	Artificial Sweeteners	No
Suitable for Coeliacs	No	Halal Diet	Suitable for
Kosher Diet	No	Vegetarian Diet	Suitable for
Vegan Diet	No		

DIET SUITABILITY

NUTRITIONAL INFORMATION

Each 100g/ml portion contains:



of your reference intake.

Typical values per 100g/ml : Energy 365kcal / 1530kj

Nutrient	per 100g/ml	RI per 100g/ml	per 60g/ml serving	RI per 60g/ml serving
Energy (kJ)	1530 kJ	18%	918 kJ	11%
Energy (kcal)	365 kcal	18%	219 kcal	11%
Fat	19.9 g	28%	11.9 g	17%
of which Saturates	12.6 g	63%	7.6 g	38%
of which Mono-unsaturates	5.1 g		3.1 g	
of which Polyunsaturates	0.9 g		0.5 g	
Carbohydrate	37.5 g	14%	22.5 g	9%
of which Sugars	5.5 g	6%	3.3 g	4%
Fibre	1.6 g		1 g	
Protein	7.8 g	16%	4.7 g	9%
Salt	1.02 g	17%	0.6 g	10%
Sodium	410 mg		246 mg	
Serving Size	60 g			

VITAMINS AND MINERALS

Nutrient	per 100g/ml	RI per 100g/ml	per 60g/ml serving	RI per 60g/ml serving
Vitamin A	154.7 µg	19%	92.8 µg	12%
Vitamin C	0 mg	0%	-	
Calcium	12.9 mg	2%	7.7 mg	1%
Iron	0.6 mg	4%	0.4 mg	3%

SUPPLEMENTARY NUTRITIONAL INFORMATION

Trans Fats per 100 g/ml	0.5 g
--------------------------------	-------

HFSS (HIGH IN FAT, SALT AND SUGAR)

HFSS Status	Yes
--------------------	-----

HANDLING & STORAGE INFORMATION

Directions For Use

Tray arrangement (600 x 400) 12 items on a tray Defrosting approximately 30-45 min at room temperature Preheating oven 190°C Baking (in ventilated oven) approximately 15-17 min at 165-170°C, open damper Cooling and rest on tray at room temperature

Storage Instructions

To be stored in the freezer at - 18°C *** before use, until the Use By Date written on the label.

Shelf Life from Time of Production 270 Days

ACCREDITATIONS/ CERTIFICATIONS/ ASSURANCE SCHEMES ORIGIN

BRCGS Certified

Other Accreditation

Product Country of Origin/Place of Provenance France

Additional Origin Details

N/A

PRODUCT CHARACTERISTICS

Standards Testing

Do you undertake trend analysis of microbiological results? No

Is shelf life testing undertaken? No

Microbiological Standards

Organism	Description	Frequency	Target	Maximum	Sample (g or ml)
Bacillus Cereus (cfu/g or ml)		Quarterly	<100	1000	-
E. Coli (cfu/g or ml)		Quarterly	<10	100	-
Listeria Monocytogenes (cfu/g or ml)		Quarterly	=0	0	25
Staphylococcus Aureus (cfu/g or ml)		Quarterly	<100	1000	-
Salmonella (cfu/g or ml)		Quarterly	=0	0	25
Moulds (cfu/g or ml)		Quarterly	<1000	10000	-
Aerobic Colony Count (ACC) (cfu/g or ml)		Quarterly	<100000	1000000	-

CONFIGURATION

Case Configuration

Inner Pack Configuration

Total Quantity of Inner Components in Outer Case 2 Units

Is the Outer Case Splittable? No

PRODUCT WEIGHTS

Inner Component

Variable Weight Consumer Item No

Net Drained Weight 0 kg

Weight/Volume

1 product = 60g 2 plastic bags of 35 products each per box

Net weight per bag : 2.1kg

Outer Case

Outer Case Gross Weight 4.63 kg

Outer Case Net Weight 4.2 kg

PRODUCT DIMENSIONS

Inner Component	
Inner Component Depth	110 mm
Inner Component Width	50 mm
Inner Component Height	35 mm
Outer Case	
Outer Case Depth	388 mm
Outer Case Width	290 mm
Outer Case Height	245 mm

PALLET INFORMATION

Quantity of Cases Per Pallet Layer	10 Cases	Pallet Height	1.9 MTR
Quantity of Layers Per Pallet	7 Layers	Pallet Gross Weight	340 kg
Quantity of Cases Per Pallet	70 Cases		

PACKAGING

Inner Component Packaging						
Type	Materials	Weight	Recycled Plastic %	Recyclable	Returnable	Composite
Paper/Polyethylene	Plastic	12 g	- %			
Outer Case Packaging						
Type	Materials	Weight	Recycled Plastic %	Recyclable	Returnable	Composite
Case	Plastic	24 g	- %			
Case	Paper/Cardboard	500 g	- %			
Transport Packaging						
Type	Materials	Weight	Recycled Plastic %	Recyclable	Returnable	Composite
Other	Plastic	270 g	- %			
Other	Wood	15000 g	- %			

OTHER INFORMATION

Intrastat/Taric Code	1905 90 70	Identification/Health Marks	35-327-02
-----------------------------	------------	------------------------------------	-----------

Manufacturer Comments

).

CONTACT INFORMATION

Address
 Bridor
 ZA de l'Olivet
 Noyal-Sur-Vilaine
 35538
 France

P. (Phone) 00332 99 00 11 67

The information on the [Erudus System](#) has been supplied by the manufacturers of the products and, whilst the owners of the Erudus System take steps to ensure the information is regularly updated, they give no warranty and no guarantee that the information is accurate. Product information and ingredients may change, please always read product labels carefully in addition to using the information provided by Erudus.

We do not accept liability for any inaccuracies or incorrect information contained on this site.
 Please visit <http://www.erudus.com/terms-and-conditions> for full terms and conditions.