

Changed Apr 03, 2024 14:22

Reviewed Apr 03, 2024 14:22

Erudus ID f28e547b874f4b89b9998545b68c1af3

Version 3.0

RECEIVED
 Thomas Ridley QC Dept.
 11:24 am, 5 Apr 2024

Thomas Ridley FOODSERVICE

The food information supplied by Thomas Ridley Foodservice has been provided by the respective product manufacturer. Whilst we use reasonable endeavours to check this information and ensure its accuracy, we do not give any warranty (whether express or implied), guarantee or representation that it is true, accurate or complete in any respect.

As product information, ingredients, nutritional guides and dietary or allergy advice may change from time to time, we recommend that you always carefully read the product label prior to using or consuming any such products. You should not solely rely upon the information we provide and make your own assessment as to the suitability or otherwise of any given product.



00576

Blackberry & Blackcurrant Frangipan Tart

Blackberry & Blackcurrant Frangipan Tart

PRODUCT DESCRIPTION

Sweet pastry case with blackberries and blackcurrants, topped with a moist almond flavour sponge, baked and apricot glazed.

Brand	Chantilly Patisserie
Manufacturer Product Code	01-16-003-0926
Product Type	Food
Product Category	Desserts
Storage Type	Frozen
Erudus ID	f28e547b874f4b89b9998545b68c1af3
Specification Type	Bakery Products



Outer Case GTIN 5060076940926



INGREDIENTS

Ingredient Declaration

Almond Flavour Sponge (31%) (Wheat Flour (**WHEAT** Flour, Calcium Carbonate, Iron, Niacin, Thiamin), Sugar, Whole **EGG**, Rapeseed Oil, Water, Modified Maize Starch, Whey Powder (**MILK**), Raising Agents (Potassium Carbonates, Diphosphates), Salt, Emulsifier (Dried Glucose Syrup, Emulsifiers (Lactic Acid Esters of Mono & Di-Glycerides of Fatty Acids, Mono & Di-Glycerides of Fatty Acids, Propane-1,2-diol Esters of Fatty Acids), Skimmed **MILK** Powder, Stabiliser (Diphosphates), Natural Vanilla Flavouring, Almond Flavouring)), Pastry (Wheat Flour (**WHEAT** Flour, Calcium Carbonate, Iron, Niacin, Thiamin), Margarine (Palm & Rapeseed Oil, Water, Salt, Emulsifier (Polyglycerol Esters of Fatty Acids), Natural Flavouring, Colour (Annatto Bixin, Curcumin), Sugar, **EGG**), Blackcurrant Filling (11%) (Water, Sugar, Blackcurrants, Modified Maize Starch, Colour (Anthocyanins), Preservative (Potassium Sorbate), Acidity Regulators (Sodium Citrates, Citric Acid), Natural Flavouring), Blackberries (9%), Apricot Glaze (Water, Glucose-Fructose Syrup, Sugar, Apricot Puree, Gelling Agents (Amidated Pectin, Carrageenan, Xanthan Gum), Acid (Citric Acid), Acidity Regulator (Trisodium Citrate, Tricalcium Phosphate), Preservative (Potassium Sorbate), Natural Flavouring, Firming Agent (Potassium Chloride), Colour (Paprika Extract)), Blackcurrants (3%), Dusting Sugar (Dextrose, Cornflour, Palm Oil).

ALLERGENS

Product Contains:

Celery/Celery	No	Mustard	No
Cereals Containing Gluten	Yes	Nuts (Tree)	May Contain
Barley	May Contain	Almond nuts	May Contain
Oats	May Contain	Brazil nuts	No
Rye	No	Cashew nuts	No
Wheat (including Spelt and Khorasan)	Yes	Hazelnuts	May Contain
Crustacea	No	Macadamia (Queensland) nuts	No
Eggs	Yes	Pecan nuts	May Contain
Fish	No	Pistachio nuts	May Contain
Lupin	No	Walnuts	No
Milk	Yes	Peanuts	No
Molluscs	No	Sesame Seeds	No
		Soybeans	May Contain
		Sulphur Dioxide and Sulphites	May Contain

Risk Source:

Additional Allergen Information

For allergens, including cereals containing gluten, see ingredients in CAPITALS. Produced in a manufacturing site which uses Nuts, Soya, Sulphites, Gluten (from Oats), Gluten (from Barley). * NB Almond flavour sponge contains almond flavour which is nature identical and does not contain almonds.

SUPPLEMENTARY INGREDIENT INFORMATION

Palm Oil	Yes
Hydrogenated Vegetable Oil/Fat	No
GM Protein/DNA	No

ADDITIVES

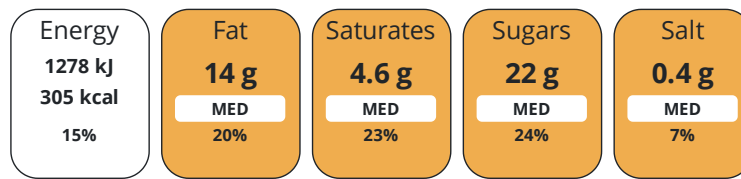
Product Contains:

Artificial Antioxidants	No	Artificial Flavourings	No
Artificial Colours	No	Artificial Preservatives	Yes
Artificial Flavour Enhancers	No	Artificial Sweeteners	No
Vegan Diet	No	Vegetarian Diet	Suitable for
Halal Diet	No	Kosher Diet	No

DIET SUITABILITY

NUTRITIONAL INFORMATION

Each 100g/ml portion contains:



of your reference intake.

Typical values per 100g/ml : Energy 305kcal / 1278kJ

Nutrient	per 100g	RI per 100g
Energy (kJ)	1278 kJ	15%
Energy (kcal)	305 kcal	15%
Fat	14 g	20%
of which Saturates	4.6 g	23%
of which Mono-unsaturates	5.2 g	
of which Polyunsaturates	3.8 g	
Carbohydrate	40.8 g	16%
of which Sugars	22 g	24%
of which Starch	18.8 g	
Fibre	1.6 g	
Protein	3.8 g	8%
Salt	0.4 g	7%
Sodium	0 mg	

VITAMINS AND MINERALS

Nutrient	per 100g	RI per 100g
Vitamin A	0.1 µg	0%
Vitamin C	8 mg	10%
Folate/Folic Acid	0 µg	0%
Calcium	43 mg	5%
Iron	0.7 mg	5%
Zinc	0.3 mg	3%

SUPPLEMENTARY
NUTRITIONAL
INFORMATION

Cholesterol per 100 g/ml (UK/FR)	0.03 g
Trans Fats per 100 g/ml	0.1 g
Fat Percentage in Dry Matter per 100 g/ml	0 %
Non Milk Extrinsic Sugars per 100 g/ml	21.5 g

HFSS (HIGH IN
FAT, SALT AND
SUGAR)
HANDLING &
STORAGE
INFORMATION

HFSS Status Yes

Directions For Use

To defrost remove all packaging & refrigerate for 12 hours. Once defrosted, keep refrigerated and use within 4 days. Do not re-freeze.

Storage Instructions

Store at -18°C.

Shelf Life from Time of Production 730 Days

Exempt From Shelf Life Labelling No

ACCREDITATIONS/
CERTIFICATIONS/
ASSURANCE
SCHEMES
ORIGIN

BRCGS Certified

Other Accreditation

Product Country of Origin/Place of Provenance United Kingdom

Additional Origin Details

N/A

PRODUCT
CHARACTERISTICS
CONFIGURATION

Standards Testing

Case Configuration

Inner Pack Configuration

Total Quantity of Inner Components in Outer Case 1 Units

Is the Outer Case Splittable? No

PRODUCT
WEIGHTS

Inner Component

Variable Weight Consumer Item Yes

Net Drained Weight 0 g

Outer Case

Outer Case Gross Weight 1.76 kg

Outer Case Net Weight 1.5 kg

PRODUCT
DIMENSIONS

Inner Component

Inner Component Depth 270 mm

Inner Component Width 270 mm

Inner Component Height 35 mm

Outer Case

Outer Case Depth 300 mm

Outer Case Width 295 mm

Outer Case Height 90 mm

PALLET
INFORMATION

Quantity of Cases Per Pallet Layer 12 Cases

Pallet Height 1.5 MTR

Quantity of Layers Per Pallet 15 Layers

Pallet Gross Weight 317 kg

Quantity of Cases Per Pallet 180 Cases

PACKAGING

Inner Component Packaging

Type	Materials	Weight	Recycled Plastic %	Recyclable	Returnable	Composite
Box	Paper/Cardboard	85 g	- %			

Outer Case Packaging

Type	Materials	Weight	Recycled Plastic %	Recyclable	Returnable	Composite
Case	Paper/Cardboard	175 g	- %			

Transport Packaging

Type	Materials	Weight	Recycled Plastic %	Recyclable	Returnable	Composite
Other	Plastic	275 g	- %		Yes	
Other	Paper/Cardboard	500 g	- %		Yes	

OTHER INFORMATION

Intrastat/Taric Code	0
-----------------------------	---

Manufacturer Comments

Minimum order quantities are for a single layer of product . Providing that a total minimum of 144 cases to a maximum 180 cases are ordered the pallet can consist of mixed products. Almond flavour sponge contains almond flavour which is nature identical and does not contain almonds. The product can be classified as nut free, however it is manufactured in a site which uses nuts and therefore we would recommend that the product is not suitable for nut allergy sufferers.

CONTACT INFORMATION

Address	Technical Contact
Chantilly Patisserie	Claire Dawson
Aspen Way Yalberton Industrial Estate	Technical Director
Aspen Way	cdawson@chantillypatisserie.co.uk
Paignton	
Paignton	P: (Phone) +441803663434
TQ4 7QR	
England	

P: (Phone) 01803 663434

Complaints Contact	Commercial Contact
Claire Dawson	Andrew Hart
Technical Director	Business Development Manager
cdawson@chantillypatisserie.co.uk	ahart@chantillypatisserie.co.uk
P: (Phone) +441803663434	P: (Phone) +441803663434

The information on the [Erudus System](#) has been supplied by the manufacturers of the products and, whilst the owners of the Erudus System take steps to ensure the information is regularly updated, they give no warranty and no guarantee that the information is accurate. Product information and ingredients may change, please always read product labels carefully in addition to using the information provided by Erudus.

We do not accept liability for any inaccuracies or incorrect information contained on this site. Please visit <http://www.erudus.com/terms-and-conditions> for full terms and conditions.