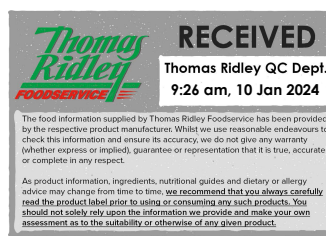


Changed Jan 09, 2024 15:04

Reviewed Jan 09, 2024 15:04

Erudus ID 76e2151bb4114034bc877372ba2e24de

Version 2.0



**Thomas Ridley**  
FOODSERVICE

**RECEIVED**  
Thomas Ridley QC Dept.  
9:26 am, 10 Jan 2024

The food information supplied by Thomas Ridley Foodservice has been provided by the respective product manufacturer. Whilst we use reasonable endeavours to check this information and ensure its accuracy, we do not give any warranty (whether express or implied), guarantee or representation that it is true, accurate or complete in any respect.

As product information, ingredients, nutritional guides and dietary or allergy advice may change from time to time, we recommend that you always carefully read the product label prior to using or consuming any such products. You should not solely rely upon the information we provide and make your own assessment as to the suitability or otherwise of any given product.



# Kellogg's Crunchy Granola 4x1500g

Kellogg's Classic Crunchy Granola Bulk Bag 4 x 1.5KG

## PRODUCT DESCRIPTION

Start your day with this delicious crunchy granola cereal from Kelloggs. Granola is high in fiber and can improve your digestion and help with your energy levels. Each big bag is 1.5kg and provides around 33 servings.

|                           |                                  |
|---------------------------|----------------------------------|
| Brand                     | Kellanova (previously Kellogg's) |
| Manufacturer Product Code | 5115986000                       |
| Product Type              | Food                             |
| Product Category          | Breakfast Cereal                 |
| Storage Type              | Ambient                          |
| Erudus ID                 | 76e2151bb4114034bc877372ba2e24de |
| Specification Type        | Cereals                          |



|                      |               |
|----------------------|---------------|
| Inner Component GTIN | 5053827159852 |
| Outer Case GTIN      | 5053827159869 |



## INGREDIENTS

### Ingredient Declaration

Whole **OATS** (55%), sugar, sustainable palm oil, **WHEAT** flour, salt, molasses, dried coconut, **BARLEY** malt extract.

## ALLERGENS

Product Contains:

|   |     |                                      |             |
|---|-----|--------------------------------------|-------------|
| <b>Celery/Celeriac</b>                      | No  | <b>Mustard</b>                       | No          |
| <b>Cereals Containing Gluten</b>            | Yes | <b>Nuts (Tree)</b>                   | May Contain |
| <b>Barley</b>                               | Yes | <b>Almond nuts</b>                   | May Contain |
| <b>Oats</b>                                 | Yes | <b>Brazil nuts</b>                   | May Contain |
| <b>Rye</b>                                  | No  | <b>Cashew nuts</b>                   | May Contain |
| <b>Wheat (including Spelt and Khorasan)</b> | Yes | <b>Hazelnuts</b>                     | May Contain |
| <b>Crustacea</b>                            | No  | <b>Macadamia (Queensland) nuts</b>   | May Contain |
| <b>Eggs</b>                                 | No  | <b>Pecan nuts</b>                    | May Contain |
| <b>Fish</b>                                 | No  | <b>Pistachio nuts</b>                | May Contain |
| <b>Lupin</b>                                | No  | <b>Walnuts</b>                       | May Contain |
| <b>Milk</b>                                 | No  | <b>Peanuts</b>                       | No          |
| <b>Molluscs</b>                             | No  | <b>Sesame Seeds</b>                  | No          |
|   |     | <b>Soybeans</b>                      | No          |
|   |     | <b>Sulphur Dioxide and Sulphites</b> | No          |

Risk Source:

SUPPLEMENTARY  
INGREDIENT  
INFORMATION

|                                       |     |
|---------------------------------------|-----|
| <b>Palm Oil</b>                       | Yes |
| <b>Hydrogenated Vegetable Oil/Fat</b> | No  |
| <b>GM Protein/DNA</b>                 | No  |

ADDITIVES

*Product Contains:*

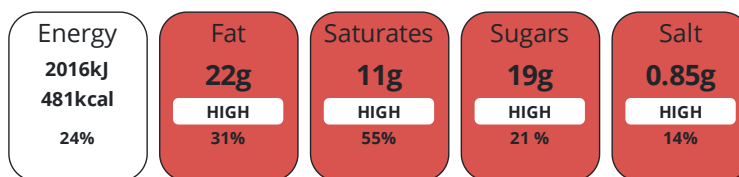
|                                     |    |                                 |    |
|-------------------------------------|----|---------------------------------|----|
| <b>Artificial Antioxidants</b>      | No | <b>Artificial Flavourings</b>   | No |
| <b>Artificial Colours</b>           | No | <b>Artificial Preservatives</b> | No |
| <b>Artificial Flavour Enhancers</b> | No | <b>Artificial Sweeteners</b>    | No |

DIET  
SUITABILITY

|                   |              |                        |              |
|-------------------|--------------|------------------------|--------------|
| <b>Vegan Diet</b> | Suitable for | <b>Vegetarian Diet</b> | Suitable for |
| <b>Halal Diet</b> | Suitable for | <b>Kosher Diet</b>     | Suitable for |

NUTRITIONAL  
INFORMATION

Each 100g/ml portion contains:



of your reference intake.

Typical values per 100g/ml : Energy 481kcal / 2016kj

| Nutrient                  | per 100g | RI per 100g | per 45g serving | RI per 45g serving |
|---------------------------|----------|-------------|-----------------|--------------------|
| <b>Energy (kj)</b>        | 2016 kj  | 24%         | 907.2 kj        | 11%                |
| <b>Energy (kcal)</b>      | 481 kcal | 24%         | 216.5 kcal      | 11%                |
| <b>Fat</b>                | 22 g     | 31%         | 9.9 g           | 14%                |
| <b>of which Saturates</b> | 11 g     | 55%         | 5 g             | 25%                |
| <b>Carbohydrate</b>       | 60 g     | 23%         | 27 g            | 10%                |
| <b>of which Sugars</b>    | 19 g     | 21%         | 8.6 g           | 10%                |
| <b>Fibre</b>              | 5.7 g    |             | 2.6 g           |                    |
| <b>Protein</b>            | 8 g      | 16%         | 3.6 g           | 7%                 |
| <b>Salt</b>               | 0.85 g   | 14%         | 0.4 g           | 7%                 |

**Serving Size** 45 g

SUPPLEMENTARY  
NUTRITIONAL  
INFORMATION

HANDLING &  
STORAGE  
INFORMATION

**Directions For Use**

Eat as directed

**Storage Instructions**

Store in a cool dry place

|   |          |   |    |
|---|----------|---|----|
| <b>Shelf Life from Time of Production</b> | 365 Days | <b>Exempt From Shelf Life Labelling</b> | No |
|---|----------|---|----|

ORIGIN

**Product Country of Origin/Place of Provenance** Spain

PRODUCT  
CHARACTERISTICS

Standards Testing

|  |    |  |    |
|--|----|--|----|
| <b>Do you undertake trend analysis of microbiological results?</b> | No | <b>Is shelf life testing undertaken?</b> | No |
|--|----|--|----|

| CONFIGURATION       | Case Configuration                                      | Inner Pack Configuration   |                            |                           |                   |                   |                  |
|---------------------|---|--|----------------------------|---------------------------|-------------------|-------------------|------------------|
| PRODUCT WEIGHTS     | <b>Variable Inner Components in Outer Case</b>          | No   |                            |                           |                   |                   |                  |
|                     | <b>Total Quantity of Inner Components in Outer Case</b> | 4 Units  |                            |                           |                   |                   |                  |
|                     | <b>Is the Outer Case Splittable?</b>                    | Yes  |                            |                           |                   |                   |                  |
|                     | Inner Component   |  |                            |                           |                   |                   |                  |
|                     | <b>Variable Weight Consumer Item</b>                    | No   |                            |                           |                   |                   |                  |
|                     | <b>Inner Component Weight</b>                           | 1500 g   |                            |                           |                   |                   |                  |
| PRODUCT DIMENSIONS  | <b>Net Drained Weight</b>                               | 1.5 kg   |                            |                           |                   |                   |                  |
|                     | Outer Case  |  |                            |                           |                   |                   |                  |
|                     | <b>Outer Case Gross Weight</b>                          | 6.48 kg  |                            |                           |                   |                   |                  |
|                     | <b>Outer Case Net Weight</b>                            | 6 kg   |                            |                           |                   |                   |                  |
|                     | Inner Component   |  |                            |                           |                   |                   |                  |
|                     | <b>Inner Component Depth</b>                            | 80 mm  |                            |                           |                   |                   |                  |
| PALLET INFORMATION  | <b>Inner Component Width</b>                            | 210 mm   |                            |                           |                   |                   |                  |
|                     | <b>Inner Component Height</b>                           | 410 mm   |                            |                           |                   |                   |                  |
|                     | Outer Case  |  |                            |                           |                   |                   |                  |
|                     | <b>Outer Case Depth</b>                                 | 398 mm   |                            |                           |                   |                   |                  |
|                     | <b>Outer Case Width</b>                                 | 249 mm   |                            |                           |                   |                   |                  |
|                     | <b>Outer Case Height</b>                                | 356 mm   |                            |                           |                   |                   |                  |
| PACKAGING           | <b>Quantity of Cases Per Pallet Layer</b>               | 12 Cases   | <b>Pallet Height</b>       | 2.46 MTR                  |                   |                   |                  |
|                     | <b>Quantity of Layers Per Pallet</b>                    | 6 Layers   | <b>Pallet Gross Weight</b> | 524.85 kg                 |                   |                   |                  |
|                     | <b>Quantity of Cases Per Pallet</b>                     | 72 Cases   |                            |                           |                   |                   |                  |
| OTHER INFORMATION   | Inner Component Packaging                               |  |                            |                           |                   |                   |                  |
|                     | <b>Type</b>   | <b>Materials</b>   | <b>Weight</b>              | <b>Recycled Plastic %</b> | <b>Recyclable</b> | <b>Returnable</b> | <b>Composite</b> |
|                     | Bag   | Plastic  | 20 g                       | 0.00 %                    |                   |                   |                  |
|                     | Outer Case Packaging                                    |  |                            |                           |                   |                   |                  |
|                     | <b>Type</b>   | <b>Materials</b>   | <b>Weight</b>              | <b>Recycled Plastic %</b> | <b>Recyclable</b> | <b>Returnable</b> | <b>Composite</b> |
|                     | Bag   | Plastic  | 20 g                       | 0.00 %                    |                   |                   |                  |
| CONTACT INFORMATION | <b>Commodity Code</b>                                   | 19041090   |                            |                           |                   |                   |                  |
|                     | <b>Address</b>  | Kellanova (previously Kellogg's)<br>Kellogg<br>Orange Tower<br>Salford<br>Greater Manchester<br>M50 2HF<br>England |                            |                           |                   |                   |                  |
|                     | <b>P: (Phone)</b>                                       | 07716254258  |                            |                           |                   |                   |                  |

The information on the [Erudus System](#) has been supplied by the manufacturers of the products and, whilst the owners of the Erudus System take steps to ensure the information is regularly updated, they give no warranty and no guarantee that the information is accurate. Product information and ingredients may change, please always read product labels carefully in addition to using the information provided by Erudus.

We do not accept liability for any inaccuracies or incorrect information contained on this site.  
Please visit <http://www.erudus.com/terms-and-conditions> for full terms and conditions.