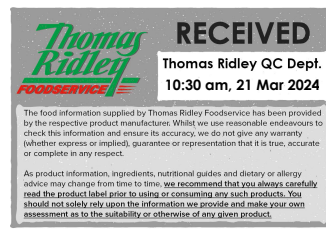


Changed Mar 21, 2024 10:28

Reviewed Mar 21, 2024 10:28

Erudus ID 778945b267ef4c06a8848fa93ebde644

Version 3.0



Cooked Mulled Cider 4.8% Vol. - 4 x 3L

Cooked Mulled Cider 4.8% Vol. - 4 X 3L 4x3litre

PRODUCT DESCRIPTION

Mulled Cooking Cider, seasoned with salt

Brand	Gourmet Classic
Manufacturer Product Code	8701-242
Product Type	Food
Product Category	Condiments
Storage Type	Ambient
Erudus ID	778945b267ef4c06a8848fa93ebde644
Specification Type	Generic
Inner Component GTIN	5036582004636
Outer Case GTIN	05036582004650



INGREDIENTS

Ingredient Declaration

Cider (88%), Sugar, Natural Flavouring, Salt, Preservatives (Potassium Sorbate, Sodium Benzoate, Potassium MetabiSULPHITE).

ALLERGENS

Product Contains:

Celery/Celeriac	No	Mustard	No
Cereals Containing Gluten	No	Nuts (Tree)	No
Barley	No	Almond nuts	No
Oats	No	Brazil nuts	No
Rye	No	Cashew nuts	No
Wheat (including Spelt and Khorasan)	No	Hazelnuts	No
Crustacea	No	Macadamia (Queensland) nuts	No
Eggs	No	Pecan nuts	No
Fish	No	Pistachio nuts	No
Lupin	No	Walnuts	No
Milk	No	Peanuts	No
Molluscs	No	Sesame Seeds	No
		Soybeans	No
		Sulphur Dioxide and Sulphites	Yes

Additional Allergen Information

Contains Sulphites.

SUPPLEMENTARY INGREDIENT INFORMATION

Palm Oil	No	Alcoholic Strength %Vol (ABV)	4.8 % Vol
Hydrogenated Vegetable Oil/Fat	No		
GM Protein/DNA	No		

ADDITIVES

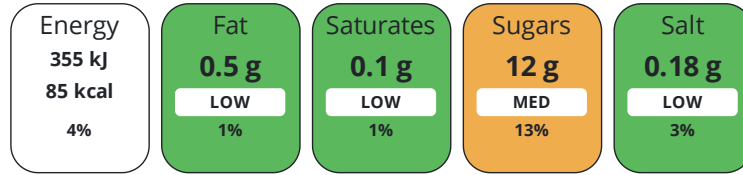
Product Contains:

Artificial Antioxidants	No	Artificial Flavourings	No
Artificial Colours	No	Artificial Preservatives	Yes
Artificial Flavour Enhancers	No	Artificial Sweeteners	No
Vegan Diet	Suitable for	Vegetarian Diet	Suitable for
Halal Diet	No	Kosher Diet	No

DIET
SUITABILITY

NUTRITIONAL
INFORMATION

Each 100g/ml portion contains:



of your reference intake.

Typical values per 100g/ml : Energy 85kcal / 355kj

Nutrient	per 100ml	RI per 100ml
Energy (kJ)	355 kJ	4%
Energy (kcal)	85 kcal	4%
Fat	< 0.5 g	1%
of which Saturates	< 0.1 g	1%
Carbohydrate	12 g	5%
of which Sugars	12 g	13%
Protein	< 0.5 g	1%
Salt	0.18 g	3%

Source of Nutritional Information Calculation from known/accepted datasets

SUPPLEMENTARY
NUTRITIONAL
INFORMATION

HFSS (HIGH IN
FAT, SALT AND
SUGAR)

HFSS Status No

HANDLING &
STORAGE
INFORMATION

Directions For Use

Remove tamper-proof seal from packaging.

Storage Instructions

Store in a cool, dry place out of direct sunlight.

Storage Instructions After Opening

Keeps for up to 6 weeks after opening.

Shelf Life from Time of Production 730 Days

Exempt From Shelf Life Labelling No

Shelf Life From Opening 42 Days

ACCREDITATIONS/
CERTIFICATIONS/
ASSURANCE
SCHEMES
ORIGIN

BRCGS Certified

BRCGS Food Safety

Sedex

The Vegan Society

Product Country of Origin/Place of United Kingdom

Provenance

Additional Origin Details

Made in the UK Using wine from the EU

PRODUCT CHARACTERISTICS

Standards Testing

Do you undertake trend analysis of microbiological results?	Yes	Is shelf life testing undertaken?	Yes
		Commercially Sterile	No

Microbiological Standards

Organism	Description	Frequency	Target	Maximum	Sample (g or ml)
Yeast (cfu/g or ml)	cfu	Every Batch	<2	2	150
Moulds (cfu/g or ml)	cfu	Every Batch	<2	2	150
Aerobic Colony Count (ACC) (cfu/g or ml)	cfu	Every Batch	<100	100	150

Analytical Standards

Test	Description	Frequency	Target	Range	Sample (g or ml)
pH		Every Batch	<3.8	3.3 to 3.7	50
Specific Gravity	g/cm3	Every Batch	<1.02	1.01 to 1.03	100
Salt Content (%)	g/100ml	Every Batch	<0.22	0.16 to 0.24	0.15

ORGANOLEPTICS

Appearance	pale yellow colour
Aroma	on the nose: apple notes
Taste	on the palate: medium bodied with hints of traditional cider apple
Texture	liquid

HAZARD CONTROLS

Filters	Yes
----------------	-----

CONFIGURATION

Case Configuration	Inner Pack Configuration
Total Quantity of Inner Components in Outer Case	4 Units

PRODUCT WEIGHTS

Inner Component	
Variable Weight Consumer Item	No
Inner Component Volume	3 litre
Outer Case	
Outer Case Gross Weight	13.08 kg
Outer Case Net Weight	12.36 kg

PRODUCT DIMENSIONS

Inner Component	
Inner Component Depth	168 mm
Inner Component Width	104 mm
Inner Component Height	212 mm
Outer Case	
Outer Case Depth	336 mm
Outer Case Width	208 mm
Outer Case Height	212 mm

PALLET INFORMATION

Quantity of Cases Per Pallet Layer	14 Cases	Pallet Height	1.22 MTR
Quantity of Layers Per Pallet	5 Layers	Pallet Gross Weight	916 kg
Quantity of Cases Per Pallet	70 Cases		

PACKAGING

Inner Component Packaging

Type	Materials	Weight	Recycled Plastic %	Recyclable	Returnable	Composite
Poly Treated PET/PE	Plastic	35 g	- %			
Poly Treated PET/PE	Paper/Cardboard	145 g	- %			

Outer Case Packaging

Type	Materials	Weight	Recycled Plastic %	Recyclable	Returnable	Composite
Case	Plastic	140 g	- %			
Case	Paper/Cardboard	580 g	- %			

OTHER INFORMATION CONTACT INFORMATION

Address

Gourmet Classic
 Unit 14, Endeavour Business Park
 Crow Arch Lane
 Ringwood
 Hampshire
 BH24 1SF
 England

P: (Phone) 01202 863040

The information on the [Erudus System](#) has been supplied by the manufacturers of the products and, whilst the owners of the Erudus System take steps to ensure the information is regularly updated, they give no warranty and no guarantee that the information is accurate. Product information and ingredients may change, please always read product labels carefully in addition to using the information provided by Erudus.

We do not accept liability for any inaccuracies or incorrect information contained on this site. Please visit <http://www.erudus.com/terms-and-conditions> for full terms and conditions.