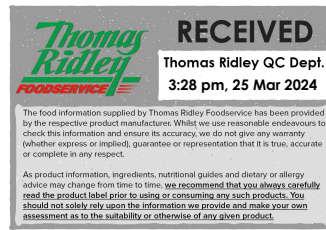


Changed Mar 25, 2024 11:30

Reviewed Mar 25, 2024 11:30

Erudus ID 7e07bd0865bb416dbc7ecff6ce10a9fb

Version 2.0



00916

# GLUTEN FREE LEMON DRIZZLE SLICE (15 portions)

Gluten Free Lemon Drizzle Slice 1x0.73kg

## PRODUCT DESCRIPTION

A gluten free lemon sponge with nibbed sugar, drizzled with lemon syrup and decorated with lemon icing.

Brand	The Handmade Cake Co.
Manufacturer Product Code	076381
Product Type	Food
Product Category	Cakes and Tarts
Storage Type	Frozen
Erudus ID	7e07bd0865bb416dbc7ecff6ce10a9fb
Specification Type	Bakery Products
Outer Case GTIN	5060044076381



## INGREDIENTS

### Ingredient Declaration

Sugar, Pasteurised Free Range **EGG**, Gluten Free Flour (Rice, Tapioca, Potato), Vegetable Margarine [Palm Oil, Rapeseed Oil, Water, Salt, Emulsifier (E471), Natural Flavouring], Lemon Juice (6%), Baking Powder [Raising Agents (E575, E500(ii), E336(i)), Maize Starch], Skimmed **MILK** Powder, Lemon Oil (0.2%), Stabiliser (Xanthan Gum).

## ALLERGENS

Product Contains:

<b>Celery/Celery</b>	No	<b>Mustard</b>	No
<b>Cereals Containing Gluten</b>	No	<b>Nuts (Tree)</b>	May Contain
<b>Barley</b>	No	<b>Almond nuts</b>	May Contain
<b>Oats</b>	No	<b>Brazil nuts</b>	May Contain
<b>Rye</b>	No	<b>Cashew nuts</b>	May Contain
<b>Wheat (including Spelt and Khorasan)</b>	No	<b>Hazelnuts</b>	May Contain
<b>Crustacea</b>	No	<b>Macadamia (Queensland) nuts</b>	May Contain
<b>Eggs</b>	Yes	<b>Pecan nuts</b>	May Contain
<b>Fish</b>	No	<b>Pistachio nuts</b>	May Contain
<b>Lupin</b>	No	<b>Walnuts</b>	May Contain
<b>Milk</b>	Yes	<b>Peanuts</b>	No
<b>Molluscs</b>	No	<b>Sesame Seeds</b>	No
		<b>Soybeans</b>	No
		<b>Sulphur Dioxide and Sulphites</b>	No

Risk Source:

## SUPPLEMENTARY INGREDIENT INFORMATION

<b>Palm Oil</b>	Yes
<b>Hydrogenated Vegetable Oil/Fat</b>	No
<b>GM Protein/DNA</b>	No

ADDITIVES

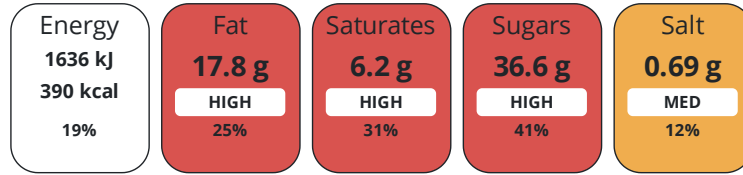
Product Contains:

<b>Artificial Antioxidants</b>	No	<b>Artificial Flavourings</b>	No
<b>Artificial Colours</b>	No	<b>Artificial Preservatives</b>	No
<b>Artificial Flavour Enhancers</b>	No	<b>Artificial Sweeteners</b>	No
<b>Vegan Diet</b>	No	<b>Vegetarian Diet</b>	Suitable for
<b>Halal Diet</b>	No	<b>Kosher Diet</b>	No

DIET  
SUITABILITY

NUTRITIONAL  
INFORMATION

Each 100g/ml portion contains:



of your reference intake.

Typical values per 100g/ml : Energy 390kcal / 1636kJ

Nutrient	per 100g	RI per 100g	per 56g serving	RI per 56g serving
<b>Energy (kJ)</b>	1636 kJ	19%	916.2 kJ	11%
<b>Energy (kcal)</b>	390 kcal	20%	218.4 kcal	11%
<b>Fat</b>	17.8 g	25%	10 g	14%
<b>of which Saturates</b>	6.2 g	31%	3.5 g	18%
<b>Carbohydrate</b>	53.1 g	20%	29.7 g	11%
<b>of which Sugars</b>	36.6 g	41%	20.5 g	23%
<b>Fibre</b>	0.4 g		0.2 g	
<b>Protein</b>	4 g	8%	2.2 g	4%
<b>Salt</b>	0.69 g	12%	0.4 g	7%

<b>Serving Size</b>	56 g
<b>Serving Size Description</b>	One slice of cake
<b>Number of Servings</b>	15 Servings

SUPPLEMENTARY  
NUTRITIONAL  
INFORMATION

HFSS (HIGH IN  
FAT, SALT AND  
SUGAR)

<b>HFSS Status</b>	Yes
<b>HFSS Score</b>	21

HANDLING &  
STORAGE  
INFORMATION

**Directions For Use**

Remove film and defrost at room temperature for 2 hours. Please re-cut around the portions before removing from tray. Once defrosted store in a cool place in an airtight container. Consume within 3 days. Do not refreeze once defrosted.

**Storage Instructions**

Store at -18°C. Once defrosted store in a cool dry place

<b>Shelf Life from Time of Production</b>	365 Days	<b>Exempt From Shelf Life Labelling</b>	No
---	----------	---	----

ACCREDITATIONS/  
CERTIFICATIONS/  
ASSURANCE  
SCHEMES  
ORIGIN

<b>BRCGS Certified</b>		<b>Roundtable of Sustainable Palm Oil (RSPO)</b>	
------------------------	--	--	--

**Product Country of Origin/Place of** United Kingdom

**Provenance**

Standards Testing

PRODUCT  
CHARACTERISTICS

	<b>Do you undertake trend analysis of microbiological results?</b>	Yes		<b>Is shelf life testing undertaken?</b>	Yes		
	Microbiological Standards						
	<b>Organism</b>	<b>Description</b>	<b>Frequency</b>	<b>Target</b>	<b>Maximum</b>	<b>Sample (g or ml)</b>	
	Salmonella (cfu/g or ml)		Annually	=0	0	290	
	Enterobacteriaceae (cfu/g or ml)		Annually	<10	100	290	
	Staphylococcus Aureus (cfu/g or ml)		Annually	<20	100	290	
	Physical Standards						
	<b>Test</b>	<b>Description</b>	<b>Frequency</b>	<b>Target</b>	<b>Range</b>	<b>Sample (g or ml)</b>	
	Dimensions Height (mm)	3 trays per batch	Every Batch	>25	25 to 32	730	
	Weight (g)	3 trays per batch	Every Batch	>730	730 to 1000	730	
CONFIGURATION	Case Configuration		Inner Pack Configuration				
	<b>Total Quantity of Inner Components in Outer Case</b>	1 Units					
	<b>Is the Outer Case Splittable?</b>	No					
PRODUCT WEIGHTS	Inner Component						
	<b>Variable Weight Consumer Item</b>	No					
	<b>Inner Component Weight</b>	0.73 kg					
	Outer Case						
	<b>Outer Case Gross Weight</b>	0.85 kg					
	<b>Outer Case Net Weight</b>	0.73 kg					
PRODUCT DIMENSIONS	Inner Component						
	<b>Inner Component Depth</b>	320 mm					
	<b>Inner Component Width</b>	200 mm					
	<b>Inner Component Height</b>	31 mm					
	Outer Case						
	<b>Outer Case Depth</b>	322 mm					
	<b>Outer Case Width</b>	203 mm					
	<b>Outer Case Height</b>	40 mm					
PALLET INFORMATION	<b>Quantity of Cases Per Pallet Layer</b>	16 Cases	<b>Pallet Height</b>	0.95 MTR			
	<b>Quantity of Layers Per Pallet</b>	20 Layers	<b>Pallet Gross Weight</b>	297 kg			
	<b>Quantity of Cases Per Pallet</b>	320 Cases					
PACKAGING	Inner Component Packaging						
	<b>Type</b>	<b>Materials</b>	<b>Weight</b>	<b>Recycled Plastic %</b>	<b>Recyclable</b>	<b>Returnable</b>	<b>Composite</b>
	Foil	Plastic	3 g	- %			
	Foil	Aluminium	24 g	- %			
	Outer Case Packaging						
	<b>Type</b>	<b>Materials</b>	<b>Weight</b>	<b>Recycled Plastic %</b>	<b>Recyclable</b>	<b>Returnable</b>	<b>Composite</b>
	Case	Paper/Cardboard	88 g	- %			

Transport Packaging

Type	Materials	Weight	Recycled Plastic %	Recyclable	Returnable	Composite
Other	Plastic	0.94 g	- %			
Other	Paper/Cardboard	0.94 g	- %			
Other	Wood	78.1 g	- %			

OTHER INFORMATION

**Manufacturer Comments**

Waste transport packaging is given per case.

CONTACT INFORMATION

Address

The Handmade Cake Co.  
The Bakery  
Gardner Road  
Maidenhead  
Berkshire  
SL6 7TU  
United Kingdom

P. (Phone) 01628 770908

Complaints Contact

Technical Team  
Maidenhead.Technical@mdesserts.com

P. (Phone) 01628 770908 Ext. 1052

Technical Contact

Technical Team  
Maidenhead.Technical@mdesserts.com

P. (Phone) 01628 770908 Ext. 1052

The information on the [Erudus System](#) has been supplied by the manufacturers of the products and, whilst the owners of the Erudus System take steps to ensure the information is regularly updated, they give no warranty and no guarantee that the information is accurate. Product information and ingredients may change, please always read product labels carefully in addition to using the information provided by Erudus.

We do not accept liability for any inaccuracies or incorrect information contained on this site.  
Please visit <http://www.erudus.com/terms-and-conditions> for full terms and conditions.