

Changed Aug 21, 2024 08:14

Reviewed Aug 21, 2024 08:14

Erudus ID 5f6dd5a7ee54433ba71a281a64a90f54

Version 2.0

00933

# Taylor's of Harrogate Earl Grey Tagged Teabags 1x100

Taylor's of Harrogate Earl Grey Tagged Teabags 1x100 1x

## PRODUCT DESCRIPTION

Taylor's of Harrogate Earl Grey Tagged and Enveloped Teabags

Brand	Taylor's of Harrogate
Manufacturer Product Code	2651RW
Product Type	Drink
Product Category	Tea & Coffee
Storage Type	Ambient
Erudus ID	5f6dd5a7ee54433ba71a281a64a90f54
Specification Type	Drinks



RECEIVED

Thomas Ridley QC Dept.  
11:53 am, 27 Aug 2024

The food information supplied by Thomas Ridley Foodservice has been provided by the respective product manufacturer. Whilst we use reasonable endeavours to check this information and ensure its accuracy, we do not give any warranty (whether express or implied), guarantee or representation that it is true, accurate or complete in any respect.

As product information, ingredients, nutritional guides and dietary or allergy advice may change from time to time, we recommend that you always carefully read the product label prior to using or consuming any such products. You should not solely rely upon the information we provide and make your own assessment as to the suitability or otherwise of any given product.



Inner Component GTIN	615357119079
Outer Case GTIN	615357119079



## INGREDIENTS

### Ingredient Declaration

Black tea, natural bergamot flavouring with other natural flavourings (5%).

## ALLERGENS

Product Contains:

<b>Celery/Celeriac</b>	No	<b>Mustard</b>	No
<b>Cereals Containing Gluten</b>	No	<b>Nuts (Tree)</b>	No
<b>Barley</b>	No	<b>Almond nuts</b>	No
<b>Oats</b>	No	<b>Brazil nuts</b>	No
<b>Rye</b>	No	<b>Cashew nuts</b>	No
<b>Wheat (including Spelt and Khorasan)</b>	No	<b>Hazelnuts</b>	No
<b>Crustacea</b>	No	<b>Macadamia (Queensland) nuts</b>	No
<b>Eggs</b>	No	<b>Pecan nuts</b>	No
<b>Fish</b>	No	<b>Pistachio nuts</b>	No
<b>Lupin</b>	No	<b>Walnuts</b>	No
<b>Milk</b>	No	<b>Peanuts</b>	No
<b>Molluscs</b>	No	<b>Sesame Seeds</b>	No
		<b>Soybeans</b>	No
		<b>Sulphur Dioxide and Sulphites</b>	No

## SUPPLEMENTARY INGREDIENT INFORMATION

<b>Palm Oil</b>	No
<b>Hydrogenated Vegetable Oil/Fat</b>	No
<b>GM Protein/DNA</b>	No

ADDITIVES

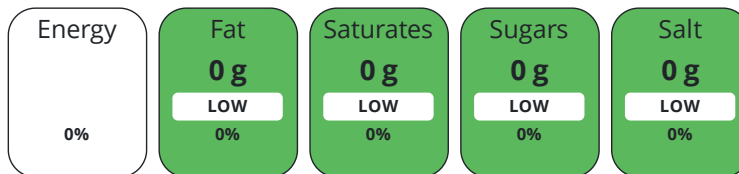
Product Contains:

<b>Artificial Antioxidants</b>	No	<b>Artificial Flavourings</b>	No
<b>Artificial Colours</b>	No	<b>Artificial Preservatives</b>	No
<b>Artificial Flavour Enhancers</b>	No	<b>Artificial Sweeteners</b>	No
<b>Vegan Diet</b>	Suitable for	<b>Vegetarian Diet</b>	Suitable for
<b>Halal Diet</b>	No	<b>Kosher Diet</b>	No

DIET SUITABILITY

NUTRITIONAL INFORMATION

Each 100g/ml portion contains:



of your reference intake.

Typical values per 100g/ml : Energy kcal / kj

Nutrient	per 100ml	RI per 100ml
<b>Energy (kj)</b>	-	
<b>Energy (kcal)</b>	-	
<b>Fat</b>	0 g	0%
<b>of which Saturates</b>	0 g	0%
<b>of which Mono-unsaturates</b>	0 g	
<b>of which Polyunsaturates</b>	0 g	
<b>Carbohydrate</b>	0 g	0%
<b>of which Sugars</b>	0 g	0%
<b>of which Polyols</b>	0 g	
<b>of which Starch</b>	0 g	
<b>Fibre</b>	0 g	
<b>Protein</b>	0 g	0%
<b>Salt</b>	0 g	0%
<b>Sodium</b>	0 mg	
<b>Exempt from Nutrition Labelling</b>		Yes

SUPPLEMENTARY NUTRITIONAL INFORMATION

HANDLING & STORAGE INFORMATION

**Directions For Use**

Use one tea bag per person, pour freshly boiled water over and infuse for 4-5 minutes. Enjoy with or without milk.

**Storage Instructions**

Store in a cool, dry place.

**Shelf Life from Time of Production** 546 Days

ACCREDITATIONS/ CERTIFICATIONS/ ASSURANCE SCHEMES ORIGIN

**Rainforest Alliance**

**BRCGS Certified**

**Product Country of Origin/Place of** United Kingdom

**Provenance**

PRODUCT CHARACTERISTICS CONFIGURATION

Standards Testing

Case Configuration

Inner Pack Configuration

**Total Quantity of Inner Components in** 1 Units

**Outer Case**

**Is the Outer Case Splittable?** Yes

PRODUCT WEIGHTS

Inner Component

Outer Case

**Outer Case Gross Weight** 17.08 kg

**Outer Case Net Weight** 8 kg

PRODUCT DIMENSIONS

Inner Component

**Inner Component Depth** 250 mm

**Inner Component Width** 130 mm

**Inner Component Height** 120 mm

Outer Case

**Outer Case Depth** 600 mm

**Outer Case Width** 506 mm

**Outer Case Height** 563 mm

PALLET INFORMATION

**Quantity of Cases Per Pallet Layer** 128 Cases

**Quantity of Layers Per Pallet** 3 Layers

**Quantity of Cases Per Pallet** 384 Cases

**Pallet Type** UK Standard Pallet

**Pallet Height** 1.9 MTR

OTHER INFORMATION CONTACT INFORMATION

Address

Taylor's of Harrogate  
Pagoda House  
Plumpton Park  
Harrogate  
North Yorkshire  
HG2 7LD  
United Kingdom

P: (Phone) 01423 814000

The information on the [Erudus System](#) has been supplied by the manufacturers of the products and, whilst the owners of the Erudus System take steps to ensure the information is regularly updated, they give no warranty and no guarantee that the information is accurate. Product information and ingredients may change, please always read product labels carefully in addition to using the information provided by Erudus.

We do not accept liability for any inaccuracies or incorrect information contained on this site. Please visit <http://www.erudus.com/terms-and-conditions> for full terms and conditions.