


Changed Feb 02, 2024 10:31

Reviewed Feb 02, 2024 10:31

Erudus ID e9337e913d044f9d8f15cad28986c2c2

Version 2.0



RECEIVED

Thomas Ridley QC Dept.
11:01 am, 2 Feb 2024

The food information supplied by Thomas Ridley Foodservice has been provided by the respective product manufacturer. Whilst we use reasonable endeavours to check this information and ensure its accuracy, we do not give any warranty (whether express or implied), guarantee or representation that it is true, accurate or complete in any respect.

As product information, ingredients, nutritional guides and dietary or allergy advice may change from time to time, we recommend that you always carefully read the product label prior to using or consuming any such products. You should not solely rely upon the information we provide and make your own assessment as to the suitability or otherwise of any given product.



McDougalls White Bread & Roll Mix 3.5kg

White Bread & Roll Mix 4x3.5kg

PRODUCT DESCRIPTION

Makes 105 x 57g portions

Brand	Premier Foods
Manufacturer Product Code	3131
Product Type	Food
Product Category	Baking Mixes and Bakery Ingredients
Storage Type	Ambient
Erudus ID	e9337e913d044f9d8f15cad28986c2c2
Specification Type	Generic
Inner Component GTIN	5012991000711
Outer Case GTIN	05012991031319



INGREDIENTS

Ingredient Declaration

Wheat Flour (with added Calcium, Iron, Niacin, Thiamin), Dried Yeast, Dextrose, **Wheat** Fibre, Salt, **Soya** Flour, Calcium Carbonate, Palm Oil, Lactose (**Milk**), **Milk** Proteins, Emulsifier (Sorbitan Monostearate), Flour Treatment Agents (Ascorbic Acid, Alpha Amylase, Glucose Oxidase, Lipase, Xylanase), **Wheat** Starch.

ALLERGENS

Product Contains:

Celery/Celeriac	No	Mustard	No
Cereals Containing Gluten	Yes	Nuts (Tree)	No
Barley	No	Almond nuts	No
Oats	No	Brazil nuts	No
Rye	No	Cashew nuts	No
Wheat (including Spelt and Khorasan)	Yes	Hazelnuts	No
Crustacea	No	Macadamia (Queensland) nuts	No
Eggs	May Contain	Pecan nuts	No
Fish	No	Pistachio nuts	No
Lupin	No	Walnuts	No
Milk	Yes	Peanuts	No
Molluscs	No	Sesame Seeds	No
		Soybeans	Yes
		Sulphur Dioxide and Sulphites	No

Risk Source:

Eggs (Risk Source)	Line
---------------------------	------

Allergen Statement On Pack

For allergens, including cereals containing gluten, see ingredients in bold. May also contain egg.

SUPPLEMENTARY
INGREDIENT
INFORMATION

Palm Oil	Yes
Hydrogenated Vegetable Oil/Fat	No
GM Protein/DNA	No

ADDITIVES

Product Contains:

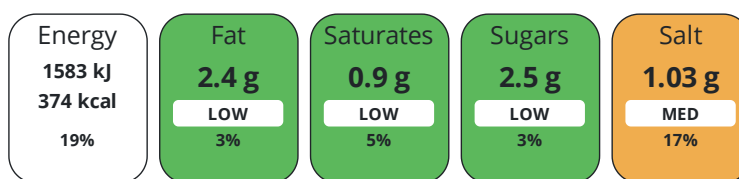
Artificial Antioxidants	No	Artificial Flavourings	No
Artificial Colours	No	Artificial Preservatives	No
Artificial Flavour Enhancers	No	Artificial Sweeteners	No

DIET
SUITABILITY

Vegan Diet	No	Vegetarian Diet	Suitable for
Halal Diet	No	Kosher Diet	No

NUTRITIONAL
INFORMATION

Each 100g/ml serving contains:



of your reference intake.

Typical values per 100g/ml : Energy 374kcal / 1583kj

Nutrient	per 100g	RI per 100g	per 100g serving	RI per 100g serving	per 57g of prepared product
Energy (kJ)	1583 kJ	19%	1583 kJ	19%	1018 kJ
Energy (kcal)	374 kcal	19%	374 kcal	19%	241 kcal
Fat	2.4 g	3%	2.4 g	3%	1.5 g
of which Saturates	0.9 g	5%	0.9 g	5%	0.6 g
Carbohydrate	75.3 g	29%	75.3 g	29%	48.5 g
of which Sugars	2.5 g	3%	2.5 g	3%	1.6 g
Fibre	5.7 g		5.7 g		3.7 g
Protein	9.9 g	20%	9.9 g	20%	6.4 g
Salt	1.03 g	17%	1 g	17%	0.66 g

Serving Size	100 g
Serving Size Description	Per 100g as per make-up instructions

Nutrition Statements

Per 100g as per make-up instructions Salt - 0.66* *Based on Government salt targets 2024. (as per 100g as per make-up instructions)

SUPPLEMENTARY
NUTRITIONAL
INFORMATION

HFSS (HIGH IN
FAT, SALT AND
SUGAR)

HFSS Status	No
--------------------	----

HANDLING & STORAGE INFORMATION

Directions For Use

Yield guide Dry mix>>Approx water>>Approx portions 57g>>Approx portions (loaves) 450g 1kg>>725ml>>30>>3 Whole Bag 3.5kg>>2.5L>>105>>3 Make-up instructions 1. Place the McDougalls White Bread & Roll Mix into a bowl fitted with a dough hook attachment. 2. Blend in the correct amount of warm (30°C/86°F) water. Using a dough hook mix on a SLOW speed for 1 minute. Continue to mix for 6 minutes on MEDIUM speed adding the remaining water a little at a time ensuring the dough is kneaded and stretched thoroughly during mixing (you may not need to add all the water). 3. Cut and shape as required. Leave to prove in a warm place until the dough has risen and doubled in size (see notes, hints and tips). Bake rolls for 10-15 minutes in a preheated oven at 220°C/425°F/Gas Mark 7. Loaves will take 25-35 minutes. For fan-assisted ovens bake at 200°C/400°F.

Storage Instructions

Store in a cool dry place. Keep bag tightly closed and use within 2 months.

Storage Instructions After Opening

For best results once opened, keep bag tightly closed and use within 2 months.

Shelf Life from Time of Production	180 Days	Exempt From Shelf Life Labelling	No
---	----------	---	----

ACCREDITATIONS/ CERTIFICATIONS/ ASSURANCE SCHEMES



ORIGIN	Product Country of Origin/Place of Provenance	United Kingdom
---------------	--	----------------

PRODUCT CHARACTERISTICS	Standards Testing		
	Do you undertake trend analysis of microbiological results?	Yes	Is shelf life testing undertaken? Yes

CONFIGURATION	Case Configuration	Inner Pack Configuration
	Total Quantity of Inner Components in Outer Case	4 Units
	Is the Outer Case Splittable?	Yes

PRODUCT WEIGHTS	Inner Component		
	Variable Weight Consumer Item	No	
	Inner Component Weight	3.5 kg	
	e mark	Yes	
	Outer Case		
	Outer Case Gross Weight	14.38 kg	
	Outer Case Net Weight	14 kg	

PRODUCT DIMENSIONS	Inner Component		
	Inner Component Depth	102 mm	
	Inner Component Width	152 mm	
	Inner Component Height	393 mm	
	Outer Case		
	Outer Case Depth	240 mm	
	Outer Case Width	330 mm	
	Outer Case Height	264 mm	

PALLET INFORMATION	Quantity of Cases Per Pallet Layer	14 Cases	Pallet Height	1.5 MTR
	Quantity of Layers Per Pallet	5 Layers	Pallet Gross Weight	1036.74 kg
	Quantity of Cases Per Pallet	70 Cases		

PACKAGING

Inner Component Packaging

Type	Materials	Weight	Recycled Plastic %	Recyclable	Returnable	Composite
Bag	Paper/Cardboard	34 g	- %			

Outer Case Packaging

Type	Materials	Weight	Recycled Plastic %	Recyclable	Returnable	Composite
Case	Paper/Cardboard	264 g	- %			

Transport Packaging

Type	Materials	Weight	Recycled Plastic %	Recyclable	Returnable	Composite
Pallet Wrap	Plastic	150 g	- %		Yes	
Pallet	Wood	25000 g	- %		Yes	

OTHER INFORMATION CONTACT INFORMATION

Address

Premier Foods
 Premier Foods, Premier House
 Centrium Business Park, Griffiths Way
 St Albans
 AL1 2RE
 England

P: (Phone) 01727 815850

Technical Contact

Nicola Ratcliffe
 Business Unit Coordinator
 nicola.ratcliffe@premierfoods.co.uk

Complaints Contact

Consumer Relations Team
 Customer Care
 LCescalations@premierfoods.co.uk

The information on the [Erudus System](#) has been supplied by the manufacturers of the products and, whilst the owners of the Erudus System take steps to ensure the information is regularly updated, they give no warranty and no guarantee that the information is accurate. Product information and ingredients may change, please always read product labels carefully in addition to using the information provided by Erudus.

We do not accept liability for any inaccuracies or incorrect information contained on this site.
 Please visit <http://www.erudus.com/terms-and-conditions> for full terms and conditions.