

00984

Food Connections Classic Mix Flapjacks

Food Connections Classic Mix Flapjacks

PRODUCT DESCRIPTION

Mixed Case of Flapjacks comprising of 5 each Oaty, Bakewell, Choc Caramel, Choc Chip, Strawberry Jam, Sultana & Cherry

Brand	Food Connections Ltd
Manufacturer Product Code	FCFJMX003/30
Product Type	Food
Product Category	Confectionery
Storage Type	Ambient
Erudus ID	5e2561abda4a409383413f5cbe49f990
Specification Type	Legacy

Bakewell

Inner Component GTIN	5027870192067
Manufacturer Component Code	Bakewell
Outer Case GTIN	05027870156007



INGREDIENTS

Ingredient Declaration

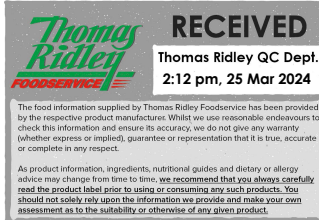
OATS, Vegetable Margarine (Palm Oil, Rapeseed Oil, Water, Emulsifier: E471.), White Chocolate Flavour Topping (14%) (Sugar, Palm Oil, Whey Powder (**MILK**), **WHEAT** Flour (with added Calcium, Iron, Niacin, Thiamine), Emulsifier: **SOYA** Lecithin. Natural Flavouring), Golden Syrup, Sugar, Raspberry jam (5%)(Glucose Syrup, Sugar, Concentrated Raspberry Puree, Water, Gelling Agent: E440. Acidity Regulators: E330 & E331c. Colour: E163.), Glucose Syrup (Glucose Syrup, Water, Acidity Regulator: E260.), Ground **ALMONDS** (0.4%), Natural Flavourings

ALLERGENS

Product Contains:

Celery/Celeriac	No	Mustard	No
Cereals Containing Gluten	Yes	Nuts (Tree)	Yes
Barley	May Contain	Almond nuts	Yes
Oats	Yes	Brazil nuts	No
Rye	No	Cashew nuts	No
Wheat (including Spelt and Khorasan)	Yes	Hazelnuts	No
Gluten content <20ppm	No	Macadamia (Queensland) nuts	No
Crustacea	No	Pecan nuts	No
Eggs	May Contain	Pistachio nuts	No
Fish	No	Walnuts	May Contain
Lupin	No	Peanuts	May Contain
Milk	Yes	Sesame Seeds	No
Molluscs	No	Soybeans	Yes
		Sulphur Dioxide and Sulphites	No

Risk Source:



Additional Allergen Information

Allergy advice: Allergens, including cereals containing gluten, are shown in the ingredients list in BOLD CAPITALS. May contain traces of other cereals containing gluten, eggs, peanuts and other nuts as this product was made in premises where these ingredients are used. OATS, MILK, WHEAT, SOYA, ALMONDS

SUPPLEMENTARY INGREDIENT INFORMATION

Palm Oil	Yes
Hydrogenated Vegetable Oil/Fat	No
GM Protein/DNA	No

ADDITIVES

Product Contains:

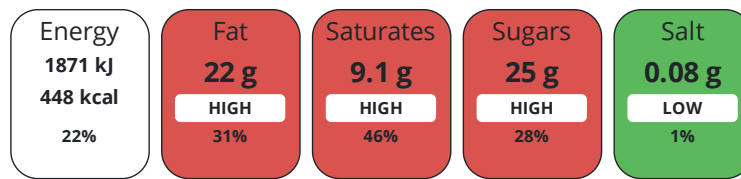
Artificial Antioxidants	No	Artificial Flavourings	No
Artificial Colours	No	Artificial Preservatives	Yes
Artificial Flavour Enhancers	No	Artificial Sweeteners	No

DIET SUITABILITY

Suitable for Coeliacs	No	Halal Diet	Suitable for
Kosher Diet	No	Vegetarian Diet	Suitable for
Vegan Diet	No		

NUTRITIONAL INFORMATION

Each 100g/ml portion contains:



of your reference intake.

Typical values per 100g/ml : Energy 448kcal / 1871kJ

Nutrient	per 100g/ml	RI per 100g/ml	per 100g/ml serving	RI per 100g/ml serving
Energy (kJ)	1871 kJ	22%	1871 kJ	22%
Energy (kcal)	448 kcal	22%	448 kcal	22%
Fat	22 g	31%	22 g	31%
of which Saturates	9.1 g	46%	9.1 g	46%
Carbohydrate	54 g	21%	54 g	21%
of which Sugars	25 g	28%	25 g	28%
Fibre	4.4 g		4.4 g	
Protein	6.3 g	13%	6.3 g	13%
Salt	0.08 g	1%	0.1 g	2%

Serving Size	100 g
---------------------	-------

SUPPLEMENTARY NUTRITIONAL INFORMATION

HFSS (HIGH IN FAT, SALT AND SUGAR)

HFSS Status	No
--------------------	----

HANDLING & STORAGE INFORMATION

Directions For Use

Ready to eat snack. Consume on opening.

Storage Instructions

Store in cool, dry conditions. Keep out of direct sunlight and away from sources of heat. Not suitable for refrigeration or freezing.

Shelf Life from Time of Production	182 Days
---	----------

ACCREDITATIONS/
CERTIFICATIONS/
ASSURANCE
SCHEMES
ORIGIN

Other Accreditation

IFS Food Standard

Roundtable of Sustainable Palm Oil (RSPO)

Product Country of Origin/Place of United Kingdom

Provenance

PRODUCT
CHARACTERISTICS

Standards Testing

Do you undertake trend analysis of microbiological results? Yes

Is shelf life testing undertaken? Yes

Microbiological Standards

Organism	Description	Frequency	Target	Maximum	Sample (g or ml)
E. Coli (cfu/g or ml)		Occasionally	<10	10	100
Listeria SPP (cfu/g or ml)		Occasionally	<0	0	25
Staphylococcus Aureus (cfu/g or ml)		Occasionally	<20	20	100
Total Viable Count (TVC) (cfu/g or ml)		Occasionally	<1000	25000	100
Salmonella (cfu/g or ml)		Occasionally	<0	0	25
Yeast (cfu/g or ml)		Occasionally	<50	250	100
Moulds (cfu/g or ml)		Occasionally	<50	250	100

Analytical Standards

Test	Description	Frequency	Target	Range	Sample (g or ml)
Moisture (%)		Occasionally	<11	7 to 15	100

CONFIGURATION

Case Configuration

Inner Pack Configuration

Total Quantity of Inner Components in 30 Units

Outer Case

Is the Outer Case Splittable? No

PRODUCT
WEIGHTS

Inner Component

Variable Weight Consumer Item Yes

Weight/Volume

e100g

Outer Case

Outer Case Gross Weight 3.18 kg

Outer Case Net Weight 3 kg

PRODUCT
DIMENSIONS

Inner Component

Inner Component Depth 113 mm

Inner Component Width 40 mm

Inner Component Height 25 mm

Outer Case

Outer Case Depth 300 mm

Outer Case Width 155 mm

Outer Case Height 132 mm

PALLET
INFORMATION

Quantity of Cases Per Pallet Layer 21 Cases

Pallet Height 0.9 MTR

Quantity of Layers Per Pallet 6 Layers

Pallet Gross Weight 422.83 kg

Quantity of Cases Per Pallet 126 Cases

PACKAGING

Inner Component Packaging

Type	Materials	Weight	Recycled Plastic %	Recyclable	Returnable	Composite
Film	Plastic	1 g	- %			

Outer Case Packaging

Type	Materials	Weight	Recycled Plastic %	Recyclable	Returnable	Composite
Case	Plastic	30 g	- %			
Case	Paper/Cardboard	145 g	- %			

Transport Packaging

Type	Materials	Weight	Recycled Plastic %	Recyclable	Returnable	Composite
Other	Plastic	355 g	- %			
Other	Paper/Cardboard	1800 g	- %			
Other	Wood	20000 g	- %			

OTHER INFORMATION

Intrastat/Taric Code	1905
Commodity Code	1905908000

Manufacturer Comments

Minimum order quantities to be discussed and agreed with Food Connections

Oaty

Inner Component GTIN 5027870101007

Manufacturer Component Code Oaty

Outer Case GTIN 05027870156007



INGREDIENTS

Ingredient Declaration

OATS (56%), Vegetable Margarine (Palm Oil, Rapeseed Oil, Water, Emulsifier: E471.), Golden Syrup, Sugar, Glucose Syrup (Glucose Syrup, Water, Acidity Regulator: E260.), Natural Flavouring

ALLERGENS

Product Contains:

Celery/Celeriac	No	Mustard	No
Cereals Containing Gluten	Yes	Nuts (Tree)	May Contain
Barley	May Contain	Almond nuts	May Contain
Oats	Yes	Brazil nuts	No
Rye	No	Cashew nuts	No
Wheat (including Spelt and Khorasan)	May Contain	Hazelnuts	No
Gluten content <20ppm	No	Macadamia (Queensland) nuts	No
Crustacea	No	Pecan nuts	No
Eggs	May Contain	Pistachio nuts	No
Fish	No	Walnuts	May Contain
Lupin	No	Peanuts	May Contain
Milk	May Contain	Sesame Seeds	No
Molluscs	No	Soybeans	May Contain
		Sulphur Dioxide and Sulphites	No

Risk Source:

Additional Allergen Information

Allergy advice: Allergens, including cereals containing gluten, are shown in the ingredients list in BOLD CAPITALS May contain traces of other cereals containing gluten, milk, eggs, soya, peanuts and nuts as this product was made in premises where these ingredients are used. OATS

SUPPLEMENTARY INGREDIENT INFORMATION

Palm Oil	Yes
Hydrogenated Vegetable Oil/Fat	No
GM Protein/DNA	No

ADDITIVES

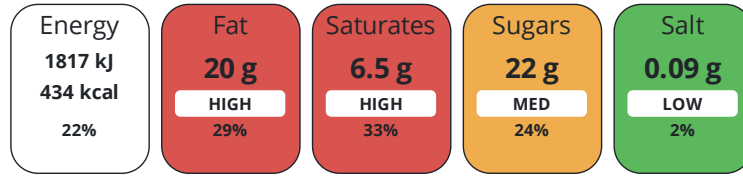
Product Contains:

Artificial Antioxidants	No	Artificial Flavourings	No
Artificial Colours	No	Artificial Preservatives	No
Artificial Flavour Enhancers	No	Artificial Sweeteners	No

DIET SUITABILITY

Suitable for Coeliacs	No	Halal Diet	Suitable for
Kosher Diet	No	Vegetarian Diet	Suitable for
Vegan Diet	Suitable for		

Each 100g/ml portion contains:



of your reference intake.

Typical values per 100g/ml : Energy 434kcal / 1817kJ

Nutrient	per 100g/ml	RI per 100g/ml	per 100g/ml serving	RI per 100g/ml serving
Energy (kJ)	1817 kJ	22%	1817 kJ	22%
Energy (kcal)	434 kcal	22%	434 kcal	22%
Fat	20 g	29%	20 g	29%
of which Saturates	6.5 g	33%	6.5 g	33%
Carbohydrate	54 g	21%	54 g	21%
of which Sugars	22 g	24%	22 g	24%
Fibre	5.2 g		5.2 g	
Protein	6.8 g	14%	6.8 g	14%
Salt	0.09 g	2%	0.1 g	2%
Serving Size	100 g			

SUPPLEMENTARY NUTRITIONAL INFORMATION

HFSS (HIGH IN FAT, SALT AND SUGAR)
HANDLING & STORAGE INFORMATION

HFSS Status	No
Directions For Use	Ready to eat snack. Consume on opening.
Storage Instructions	store in cool, dry conditions. Keep out of direct sunlight and away from sources of heat. Not suitable for refrigeration or freezing.
Shelf Life from Time of Production	182 Days

ACCREDITATIONS/ CERTIFICATIONS/ ASSURANCE SCHEMES ORIGIN

Other Accreditation	Roundtable of Sustainable Palm Oil (RSPO)	IFS Food Standard
Product Country of Origin/Place of Provenance	United Kingdom	

PRODUCT CHARACTERISTICS

Standards Testing	Do you undertake trend analysis of microbiological results?	Yes	Is shelf life testing undertaken?	Yes
-------------------	---	-----	-----------------------------------	-----

Organism	Description	Frequency	Target	Maximum	Sample (g or ml)
E. Coli (cfu/g or ml)		Occasionally	<10	10	100
Listeria SPP (cfu/g or ml)		Occasionally	<0	0	25
Staphylococcus Aureus (cfu/g or ml)		Occasionally	<20	20	100

Organism	Description	Frequency	Target	Maximum	Sample (g or ml)
Total Viable Count (TVC) (cfu/g or ml)		Occasionally	<1000	25000	100
Salmonella (cfu/g or ml)		Occasionally	<0	0	25
Yeast (cfu/g or ml)		Occasionally	<50	250	100
Moulds (cfu/g or ml)		Occasionally	<50	250	100
Aerobic Colony Count (ACC) (cfu/g or ml)		Occasionally	<10	10	100

Analytical Standards

Test	Description	Frequency	Target	Range	Sample (g or ml)
Moisture (%)		Occasionally	<11	7 to 15	100

CONFIGURATION

Case Configuration Inner Pack Configuration

Total Quantity of Inner Components in 30 Units

Outer Case

Is the Outer Case Splittable? No

PRODUCT WEIGHTS

Inner Component

Variable Weight Consumer Item Yes

Weight/Volume

e100g

Outer Case

Outer Case Gross Weight 3.18 kg

Outer Case Net Weight 3 kg

PRODUCT DIMENSIONS

Inner Component

Inner Component Depth 113 mm

Inner Component Width 40 mm

Inner Component Height 25 mm

Outer Case

Outer Case Depth 300 mm

Outer Case Width 155 mm

Outer Case Height 132 mm

PALLET INFORMATION

Quantity of Cases Per Pallet Layer 21 Cases **Pallet Height** 0.9 MTR

Quantity of Layers Per Pallet 6 Layers **Pallet Gross Weight** 422.83 kg

Quantity of Cases Per Pallet 126 Cases

PACKAGING

Inner Component Packaging

Type	Materials	Weight	Recycled Plastic %	Recyclable	Returnable	Composite
Film	Plastic	1 g	- %			

Outer Case Packaging

Type	Materials	Weight	Recycled Plastic %	Recyclable	Returnable	Composite
Case	Plastic	30 g	- %			
Case	Paper/Cardboard	145 g	- %			

Transport Packaging

Type	Materials	Weight	Recycled Plastic %	Recyclable	Returnable	Composite
Other	Plastic	355 g	- %			
Other	Paper/Cardboard	1800 g	- %			
Other	Wood	20000 g	- %			

OTHER
INFORMATION

Intrastat/Taric Code	1905
Commodity Code	1905908000

Manufacturer Comments

Minimum order quantities to be discussed and agreed with Food Connections

Choc Caramel

Inner Component GTIN	5027870103001
Manufacturer Component Code	Choc Caramel
Outer Case GTIN	05027870156007



INGREDIENTS

Ingredient Declaration

OATS, Vegetable Margarine (Palm Oil, Rapeseed Oil, Water, Emulsifier: E471.), Chocolate Flavour Topping (14%) (Sugar, Palm Oil, Whey Powder (**MILK**), **WHEAT** Flour (with added Calcium, Iron, Niacin & Thiamine), Fat Reduced Cocoa Powder, Emulsifiers: **SOYA** Lecithin & E476. Natural Flavouring), Golden Syrup, Sugar, Glucose Syrup (Glucose Syrup, Water, Acidity Regulator: E260.), Natural Flavourings, Colour: E150a.

ALLERGENS

Product Contains:

Celery/Celeriac	No	Mustard	No
Cereals Containing Gluten	Yes	Nuts (Tree)	May Contain
Barley	May Contain	Almond nuts	May Contain
Oats	Yes	Brazil nuts	No
Rye	No	Cashew nuts	No
Wheat (including Spelt and Khorasan)	Yes	Hazelnuts	No
Gluten content <20ppm	No	Macadamia (Queensland) nuts	No
Crustacea	No	Pecan nuts	No
Eggs	May Contain	Pistachio nuts	No
Fish	No	Walnuts	May Contain
Lupin	No	Peanuts	May Contain
Milk	Yes	Sesame Seeds	No
Molluscs	No	Soybeans	Yes
		Sulphur Dioxide and Sulphites	No

Risk Source:

Additional Allergen Information

Allergy advice: Allergens, including cereals containing gluten, are shown in the ingredients list in BOLD CAPITALS May contain traces of other cereals containing gluten, eggs, peanuts and nuts as this product was made in premises where these ingredients are used. OATS, MILK, WHEAT, SOYA

SUPPLEMENTARY INGREDIENT INFORMATION

Palm Oil	Yes
Hydrogenated Vegetable Oil/Fat	No
GM Protein/DNA	No

ADDITIVES

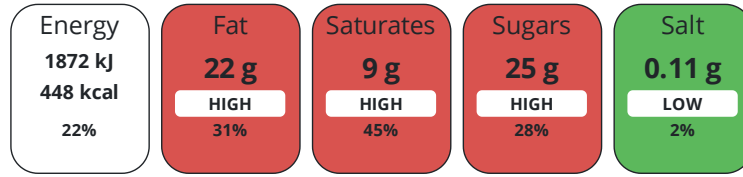
Product Contains:

Artificial Antioxidants	No	Artificial Flavourings	No
Artificial Colours	No	Artificial Preservatives	No
Artificial Flavour Enhancers	No	Artificial Sweeteners	No

DIET SUITABILITY

Suitable for Coeliacs	No	Halal Diet	Suitable for
Kosher Diet	No	Vegetarian Diet	Suitable for
Vegan Diet	No		

Each 100g/ml portion contains:



of your reference intake.

Typical values per 100g/ml : Energy 448kcal / 1872kJ

Nutrient	per 100g/ml	RI per 100g/ml	per 100g/ml serving	RI per 100g/ml serving
Energy (kJ)	1872 kJ	22%	1872 kJ	22%
Energy (kcal)	448 kcal	22%	448 kcal	22%
Fat	22 g	31%	22 g	31%
of which Saturates	9 g	45%	9 g	45%
Carbohydrate	54 g	21%	54 g	21%
of which Sugars	25 g	28%	25 g	28%
Fibre	4.4 g		4.4 g	
Protein	6.5 g	13%	6.5 g	13%
Salt	0.11 g	2%	0.1 g	2%

Serving Size 100 g

SUPPLEMENTARY
NUTRITIONAL
INFORMATION

HFSS (HIGH IN
FAT, SALT AND
SUGAR)
HANDLING &
STORAGE
INFORMATION

HFSS Status No

Directions For Use

Ready to eat snack. Consume on opening.

Storage Instructions

Store in cool, dry conditions. Keep out of direct sunlight and away from sources of heat. Not suitable for refrigeration or freezing.

Shelf Life from Time of Production 182 Days

ACCREDITATIONS/
CERTIFICATIONS/
ASSURANCE
SCHEMES
ORIGIN

Other Accreditation

Roundtable of Sustainable Palm Oil (RSPO)

IFS Food Standard

Product Country of Origin/Place of United Kingdom

Provenance

Standards Testing

PRODUCT
CHARACTERISTICS

Do you undertake trend analysis of microbiological results? Yes

Is shelf life testing undertaken? Yes

Microbiological Standards

Organism	Description	Frequency	Target	Maximum	Sample (g or ml)
E. Coli (cfu/g or ml)		Occasionally	<10	10	100
Listeria SPP (cfu/g or ml)		Occasionally	<0	0	25
Staphylococcus Aureus (cfu/g or ml)		Occasionally	<20	20	100

Organism	Description	Frequency	Target	Maximum	Sample (g or ml)
Total Viable Count (TVC) (cfu/g or ml)		Occasionally	<1000	25000	100
Salmonella (cfu/g or ml)		Occasionally	<0	0	25
Yeast (cfu/g or ml)		Occasionally	<50	250	100
Moulds (cfu/g or ml)		Occasionally	<50	250	100

Analytical Standards

Test	Description	Frequency	Target	Range	Sample (g or ml)
Moisture (%)		Occasionally	<11	7 to 15	100

CONFIGURATION

Case Configuration

Inner Pack Configuration

Total Quantity of Inner Components in Outer Case 30 Units

Is the Outer Case Splittable? No

PRODUCT WEIGHTS

Inner Component

Variable Weight Consumer Item Yes

Weight/Volume

e100g

Outer Case

Outer Case Gross Weight 3.18 kg

Outer Case Net Weight 3 kg

PRODUCT DIMENSIONS

Inner Component

Inner Component Depth 113 mm

Inner Component Width 40 mm

Inner Component Height 25 mm

Outer Case

Outer Case Depth 300 mm

Outer Case Width 155 mm

Outer Case Height 132 mm

PALLET INFORMATION

Quantity of Cases Per Pallet Layer 21 Cases

Pallet Height 0.9 MTR

Quantity of Layers Per Pallet 6 Layers

Pallet Gross Weight 422.83 kg

Quantity of Cases Per Pallet 126 Cases

PACKAGING

Inner Component Packaging

Type	Materials	Weight	Recycled Plastic %	Recyclable	Returnable	Composite
Film	Plastic	1 g	- %			

Outer Case Packaging

Type	Materials	Weight	Recycled Plastic %	Recyclable	Returnable	Composite
Case	Plastic	30 g	- %			
Case	Paper/Cardboard	145 g	- %			

Transport Packaging

Type	Materials	Weight	Recycled Plastic %	Recyclable	Returnable	Composite
Other	Plastic	355 g	- %			
Other	Paper/Cardboard	1800 g	- %			
Other	Wood	20000 g	- %			

OTHER
INFORMATION

Intrastat/Taric Code	1905
Commodity Code	1905908000

Manufacturer Comments

Minimum order quantities to be discussed and agreed with Food Connections

Choc Chip

Inner Component GTIN	5027870109003
Manufacturer Component Code	Choc Chip
Outer Case GTIN	05027870156007



INGREDIENTS

Ingredient Declaration

OATS, Vegetable Margarine (Palm Oil, Rapeseed Oil, Water, Emulsifier: E471.), Golden Syrup, Sugar, Chocolate Flavour Chips (7%) (Sugar, Vegetable Fats (Palm), Fat Reduced Cocoa Powder, Emulsifiers: **SOYA** Lecithin & E492. Natural Vanilla Flavouring), Glucose Syrup (Glucose Syrup, Water, Acidity Regulator: E260.), Natural Flavouring

ALLERGENS

Product Contains:

Celery/Celery	No	Mustard	No
Cereals Containing Gluten	Yes	Nuts (Tree)	May Contain
Barley	May Contain	Almond nuts	May Contain
Oats	Yes	Brazil nuts	No
Rye	No	Cashew nuts	No
Wheat (including Spelt and Khorasan)	May Contain	Hazelnuts	No
Gluten content <20ppm	No	Macadamia (Queensland) nuts	No
Crustacea	No	Pecan nuts	No
Eggs	May Contain	Pistachio nuts	No
Fish	No	Walnuts	May Contain
Lupin	No	Peanuts	May Contain
Milk	May Contain	Sesame Seeds	No
Molluscs	No	Soybeans	Yes
		Sulphur Dioxide and Sulphites	No

Risk Source:

Additional Allergen Information

Allergy advice: Allergens, including cereals containing gluten, are shown in the ingredients list in BOLD CAPITALS May contain traces of other cereals containing gluten, milk, eggs, peanuts and nuts as this product was made in premises where these ingredients are used. OATS, SOYA

SUPPLEMENTARY INGREDIENT INFORMATION

Palm Oil	Yes
Hydrogenated Vegetable Oil/Fat	No
GM Protein/DNA	No

ADDITIVES

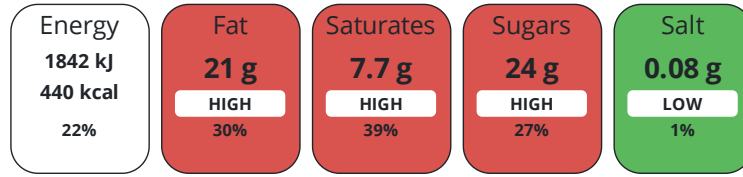
Product Contains:

Artificial Antioxidants	No	Artificial Flavourings	No
Artificial Colours	No	Artificial Preservatives	No
Artificial Flavour Enhancers	No	Artificial Sweeteners	No

DIET SUITABILITY

Suitable for Coeliacs	No	Halal Diet	Suitable for
Kosher Diet	No	Vegetarian Diet	Suitable for
Vegan Diet	Suitable for		

Each 100g/ml portion contains:



of your reference intake.

Typical values per 100g/ml : Energy 440kcal / 1842kJ

Nutrient	per 100g/ml	RI per 100g/ml	per 100g/ml serving	RI per 100g/ml serving
Energy (kJ)	1842 kJ	22%	1842 kJ	22%
Energy (kcal)	440 kcal	22%	440 kcal	22%
Fat	21 g	30%	21 g	30%
of which Saturates	7.7 g	39%	7.7 g	39%
Carbohydrate	54 g	21%	54 g	21%
of which Sugars	24 g	27%	24 g	27%
Fibre	5.1 g		5.1 g	
Protein	6.6 g	13%	6.6 g	13%
Salt	0.08 g	1%	0.1 g	2%
Serving Size	100 g			

SUPPLEMENTARY NUTRITIONAL INFORMATION

HFSS (HIGH IN FAT, SALT AND SUGAR)
HANDLING & STORAGE INFORMATION

HFSS Status	No
Directions For Use	Ready to eat snack. Consume on opening.
Storage Instructions	Store in cool, dry conditions. Keep out of direct sunlight and away from sources of heat. Not suitable for refrigeration or freezing.
Shelf Life from Time of Production	182 Days

ACCREDITATIONS/ CERTIFICATIONS/ ASSURANCE SCHEMES ORIGIN

Other Accreditation	Roundtable of Sustainable Palm Oil (RSPO)	IFS Food Standard
Product Country of Origin/Place of Provenance	United Kingdom	

PRODUCT CHARACTERISTICS

Standards Testing	Do you undertake trend analysis of microbiological results?	Yes	Is shelf life testing undertaken?	Yes
-------------------	---	-----	-----------------------------------	-----

Microbiological Standards

Organism	Description	Frequency	Target	Maximum	Sample (g or ml)
E. Coli (cfu/g or ml)		Occasionally	<10	10	100
Listeria SPP (cfu/g or ml)		Occasionally	<0	0	25
Staphylococcus Aureus (cfu/g or ml)		Occasionally	<20	20	100

Organism	Description	Frequency	Target	Maximum	Sample (g or ml)
Total Viable Count (TVC) (cfu/g or ml)		Occasionally	<1000	25000	100
Salmonella (cfu/g or ml)		Occasionally	<0	0	25
Yeast (cfu/g or ml)		Occasionally	<50	250	100
Moulds (cfu/g or ml)		Occasionally	<50	250	100

Analytical Standards

Test	Description	Frequency	Target	Range	Sample (g or ml)
Moisture (%)		Occasionally	<11	7 to 15	100

CONFIGURATION

Case Configuration Inner Pack Configuration

Total Quantity of Inner Components in Outer Case 30 Units

Is the Outer Case Splittable? No

PRODUCT WEIGHTS

Inner Component

Variable Weight Consumer Item Yes

Weight/Volume

e100g

Outer Case

Outer Case Gross Weight 3.18 kg

Outer Case Net Weight 3 kg

PRODUCT DIMENSIONS

Inner Component

Inner Component Depth 113 mm

Inner Component Width 40 mm

Inner Component Height 25 mm

Outer Case

Outer Case Depth 300 mm

Outer Case Width 155 mm

Outer Case Height 132 mm

PALLET INFORMATION

Quantity of Cases Per Pallet Layer 21 Cases **Pallet Height** 0.9 MTR

Quantity of Layers Per Pallet 6 Layers **Pallet Gross Weight** 422.83 kg

Quantity of Cases Per Pallet 126 Cases

PACKAGING

Inner Component Packaging

Type	Materials	Weight	Recycled Plastic %	Recyclable	Returnable	Composite
Film	Plastic	1 g	- %			

Outer Case Packaging

Type	Materials	Weight	Recycled Plastic %	Recyclable	Returnable	Composite
Case	Plastic	30 g	- %			
Case	Paper/Cardboard	145 g	- %			

Transport Packaging

Type	Materials	Weight	Recycled Plastic %	Recyclable	Returnable	Composite
Other	Plastic	355 g	- %			
Other	Paper/Cardboard	1800 g	- %			
Other	Wood	20000 g	- %			

OTHER
INFORMATION

Intrastat/Taric Code	1905
Commodity Code	1905908000

Manufacturer Comments

Minimum order quantities to be discussed and agreed with Food Connections

Strawberry Jam

Inner Component GTIN	5027870114007
Manufacturer Component Code	Strawberry Jam
Outer Case GTIN	05027870156007



INGREDIENTS

Ingredient Declaration

OATS, Vegetable Margarine (Palm Oil, Rapeseed Oil, Water, Emulsifier: E471.), Golden Syrup, Sugar, Strawberry Jam (7%) (Sugar, Glucose Syrup, Strawberry Puree, Gelling Agent: E440. Natural Flavour, Acidity Regulators: E330 & E331c. Colour: E163.), Glucose Syrup (Glucose Syrup, Water, Acidity Regulator: E260.), Natural Flavouring

ALLERGENS

Product Contains:

Celery/Celery	No	Mustard	No
Cereals Containing Gluten	Yes	Nuts (Tree)	May Contain
Barley	May Contain	Almond nuts	May Contain
Oats	Yes	Brazil nuts	No
Rye	No	Cashew nuts	No
Wheat (including Spelt and Khorasan)	May Contain	Hazelnuts	No
Gluten content <20ppm	No	Macadamia (Queensland) nuts	No
Crustacea	No	Pecan nuts	No
Eggs	May Contain	Pistachio nuts	No
Fish	No	Walnuts	May Contain
Lupin	No	Peanuts	May Contain
Milk	May Contain	Sesame Seeds	No
Molluscs	No	Soybeans	May Contain
		Sulphur Dioxide and Sulphites	No

Risk Source:

Additional Allergen Information

Allergy advice: Allergens, including cereals containing gluten, are shown in the ingredients list in BOLD CAPITALS May contain traces of other cereals containing gluten, eggs, soya, milk, peanuts and nuts as this product was made in premises where these ingredients are used. OATS

SUPPLEMENTARY INGREDIENT INFORMATION

Palm Oil	Yes
Hydrogenated Vegetable Oil/Fat	No
GM Protein/DNA	No

ADDITIVES

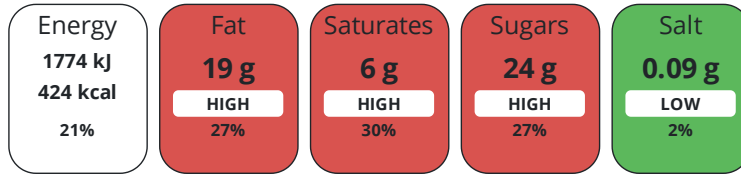
Product Contains:

Artificial Antioxidants	No	Artificial Flavourings	No
Artificial Colours	No	Artificial Preservatives	Yes
Artificial Flavour Enhancers	No	Artificial Sweeteners	No

DIET SUITABILITY

Suitable for Coeliacs	No	Halal Diet	Suitable for
Kosher Diet	No	Vegetarian Diet	Suitable for
Vegan Diet	Suitable for		

Each 100g/ml portion contains:



of your reference intake.

Typical values per 100g/ml : Energy 424kcal / 1774kJ

Nutrient	per 100g/ml	RI per 100g/ml	per 100g/ml serving	RI per 100g/ml serving
Energy (kJ)	1774 kJ	21%	1774 kJ	21%
Energy (kcal)	424 kcal	21%	424 kcal	21%
Fat	19 g	27%	19 g	27%
of which Saturates	6 g	30%	6 g	30%
Carbohydrate	55 g	21%	55 g	21%
of which Sugars	24 g	27%	24 g	27%
Fibre	4.9 g		4.9 g	
Protein	6.4 g	13%	6.4 g	13%
Salt	0.09 g	2%	0.1 g	2%
Serving Size	100 g			

SUPPLEMENTARY
NUTRITIONAL
INFORMATION

HFSS (HIGH IN
FAT, SALT AND
SUGAR)
HANDLING &
STORAGE
INFORMATION

HFSS Status No

Directions For Use

Ready to eat snack. Consume on opening.

Storage Instructions

Store in cool, dry conditions. Keep out of direct sunlight and away from sources of heat. Not suitable for refrigeration or freezing.

Shelf Life from Time of Production 182 Days

ACCREDITATIONS/
CERTIFICATIONS/
ASSURANCE
SCHEMES
ORIGIN

Other Accreditation

Roundtable of Sustainable Palm Oil (RSPO)

IFS Food Standard

Product Country of Origin/Place of United Kingdom

Provenance

Standards Testing

PRODUCT
CHARACTERISTICS

Do you undertake trend analysis of Yes

microbiological results?

Is shelf life testing undertaken? Yes

Microbiological Standards

Organism	Description	Frequency	Target	Maximum	Sample (g or ml)
E. Coli (cfu/g or ml)		Occasionally	<10	10	100
Listeria SPP (cfu/g or ml)		Occasionally	<0	0	25
Staphylococcus Aureus (cfu/g or ml)		Occasionally	<20	20	100

Organism	Description	Frequency	Target	Maximum	Sample (g or ml)
Total Viable Count (TVC) (cfu/g or ml)		Occasionally	<1000	25000	100
Salmonella (cfu/g or ml)		Occasionally	<0	0	25
Yeast (cfu/g or ml)		Occasionally	<50	250	100
Moulds (cfu/g or ml)		Occasionally	<50	250	100

Analytical Standards

Test	Description	Frequency	Target	Range	Sample (g or ml)
Moisture (%)		Occasionally	<11	7 to 15	100

CONFIGURATION

Case Configuration Inner Pack Configuration

Total Quantity of Inner Components in Outer Case 30 Units

Is the Outer Case Splittable? No

PRODUCT WEIGHTS

Inner Component

Variable Weight Consumer Item Yes

Weight/Volume

e100g

Outer Case

Outer Case Gross Weight 3.18 kg

Outer Case Net Weight 3 kg

PRODUCT DIMENSIONS

Inner Component

Inner Component Depth 113 mm

Inner Component Width 40 mm

Inner Component Height 25 mm

Outer Case

Outer Case Depth 300 mm

Outer Case Width 155 mm

Outer Case Height 132 mm

PALLET INFORMATION

Quantity of Cases Per Pallet Layer 21 Cases **Pallet Height** 0.9 MTR

Quantity of Layers Per Pallet 6 Layers **Pallet Gross Weight** 422.83 kg

Quantity of Cases Per Pallet 126 Cases

PACKAGING

Inner Component Packaging

Type	Materials	Weight	Recycled Plastic %	Recyclable	Returnable	Composite
Film	Plastic	1 g	- %			

Outer Case Packaging

Type	Materials	Weight	Recycled Plastic %	Recyclable	Returnable	Composite
Case	Plastic	30 g	- %			
Case	Paper/Cardboard	145 g	- %			

Transport Packaging

Type	Materials	Weight	Recycled Plastic %	Recyclable	Returnable	Composite
Other	Plastic	355 g	- %			
Other	Paper/Cardboard	1800 g	- %			
Other	Wood	20000 g	- %			

OTHER
INFORMATION

Intrastat/Taric Code	1905
Commodity Code	1905908000

Manufacturer Comments

Minimum order quantities to be discussed and agreed with Food Connections

Sultana & Cherry

Inner Component GTIN	5027870201561
Manufacturer Component Code	Sultana & Cherry
Outer Case GTIN	05027870156007



INGREDIENTS

Ingredient Declaration

OATS, Vegetable Margarine (Palm Oil, Rapeseed Oil, Water, Emulsifier: E471.), Golden Syrup, Sultanas (8%) (Sultanas, Sunflower Oil), Sugar, Glace Cherries (4%)(Cherries, Glucose-Fructose Syrup, Sugar, Acidity Regulator: E330. Preservative: E202. Colour: E127.), Glucose Syrup (Glucose Syrup, Water, Acidity Regulator: E260.), Natural Flavouring

ALLERGENS

Product Contains:

Celery/Celeriac	No	Mustard	No
Cereals Containing Gluten	Yes	Nuts (Tree)	May Contain
Barley	May Contain	Almond nuts	May Contain
Oats	Yes	Brazil nuts	No
Rye	No	Cashew nuts	No
Wheat (including Spelt and Khorasan)	May Contain	Hazelnuts	No
Gluten content <20ppm	No	Macadamia (Queensland) nuts	No
Crustacea	No	Pecan nuts	No
Eggs	May Contain	Pistachio nuts	No
Fish	No	Walnuts	May Contain
Lupin	No	Peanuts	May Contain
Milk	May Contain	Sesame Seeds	No
Molluscs	No	Soybeans	May Contain
		Sulphur Dioxide and Sulphites	No

Risk Source:

Additional Allergen Information

Allergy advice: Allergens, including cereals containing gluten, are shown in the ingredients list in BOLD CAPITALS May contain traces of other cereals containing gluten, milk, eggs, soya, peanuts and nuts as this product was made in premises where these ingredients are used. OATS

SUPPLEMENTARY INGREDIENT INFORMATION

Palm Oil	Yes
Hydrogenated Vegetable Oil/Fat	No
GM Protein/DNA	No

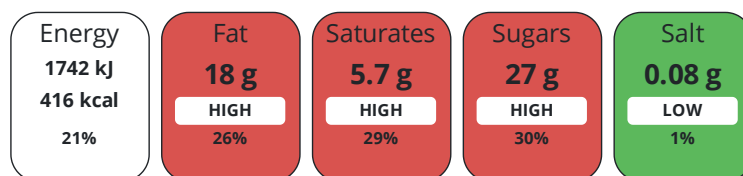
ADDITIVES

Product Contains:

Artificial Colours	Yes	Artificial Preservatives	Yes
Suitable for Coeliacs	No	Halal Diet	Suitable for
Kosher Diet	No	Vegetarian Diet	Suitable for
Vegan Diet	Suitable for		

NUTRITIONAL INFORMATION

Each 100g/ml portion contains:



of your reference intake.

Typical values per 100g/ml : Energy 416kcal / 1742kJ

Nutrient	per 100g/ml	RI per 100g/ml	per 100g/ml serving	RI per 100g/ml serving
Energy (kJ)	1742 kJ	21%	1742 kJ	21%
Energy (kcal)	416 kcal	21%	416 kcal	21%
Fat	18 g	26%	18 g	26%
of which Saturates	5.7 g	29%	5.7 g	29%
Carbohydrate	56 g	22%	56 g	22%
of which Sugars	27 g	30%	27 g	30%
Fibre	4.8 g		4.8 g	
Protein	6.2 g	12%	6.2 g	12%
Salt	0.08 g	1%	0.1 g	2%
Serving Size	100 g			

SUPPLEMENTARY NUTRITIONAL INFORMATION

HFSS (HIGH IN FAT, SALT AND SUGAR)
HANDLING & STORAGE INFORMATION

HFSS Status	No
Directions For Use	Ready to eat snack. Consume on opening.
Storage Instructions	Store in cool, dry conditions. Keep out of direct sunlight and away from sources of heat. Not suitable for refrigeration or freezing.
Shelf Life from Time of Production	182 Days

ACCREDITATIONS/ CERTIFICATIONS/ ASSURANCE SCHEMES ORIGIN

Other Accreditation	IFS Food Standard
Roundtable of Sustainable Palm Oil (RSPO)	
Product Country of Origin/Place of Provenance	United Kingdom

PRODUCT CHARACTERISTICS

Standards Testing			
Do you undertake trend analysis of microbiological results?	Yes	Is shelf life testing undertaken?	Yes

Microbiological Standards

Organism	Description	Frequency	Target	Maximum	Sample (g or ml)
E. Coli (cfu/g or ml)		Occasionally	<10	10	100
Listeria SPP (cfu/g or ml)		Occasionally	<0	0	25
Staphylococcus Aureus (cfu/g or ml)		Occasionally	<20	20	100
Total Viable Count (TVC) (cfu/g or ml)		Occasionally	<1000	25000	100
Salmonella (cfu/g or ml)		Occasionally	<0	0	25
Yeast (cfu/g or ml)		Occasionally	<50	250	100
Moulds (cfu/g or ml)		Occasionally	<50	250	100

Analytical Standards

Test	Description	Frequency	Target	Range	Sample (g or ml)
Moisture (%)		Occasionally	<11	7 to 15	100

CONFIGURATION	Case Configuration		Inner Pack Configuration					
	Total Quantity of Inner Components in Outer Case	30 Units						
PRODUCT WEIGHTS	Is the Outer Case Splittable?	No						
	Inner Component							
	Variable Weight Consumer Item	Yes						
	Weight/Volume							
	e100g							
	Outer Case							
PRODUCT DIMENSIONS	Outer Case Gross Weight	3.18 kg						
	Outer Case Net Weight	3 kg						
	Inner Component							
	Inner Component Depth	113 mm						
	Inner Component Width	40 mm						
	Inner Component Height	25 mm						
	Outer Case							
	Outer Case Depth	300 mm						
	Outer Case Width	155 mm						
	Outer Case Height	132 mm						
PALLET INFORMATION	Quantity of Cases Per Pallet Layer	21 Cases	Pallet Height	0.9 MTR				
	Quantity of Layers Per Pallet	6 Layers	Pallet Gross Weight	422.83 kg				
	Quantity of Cases Per Pallet	126 Cases						
PACKAGING	Inner Component Packaging							
	Type	Materials	Weight	Recycled Plastic %	Recyclable	Returnable	Composite	
	Film	Plastic	1 g	- %				
	Outer Case Packaging							
	Type	Materials	Weight	Recycled Plastic %	Recyclable	Returnable	Composite	
	Case	Plastic	30 g	- %				
	Case	Paper/Cardboard	145 g	- %				
	Transport Packaging							
	Type	Materials	Weight	Recycled Plastic %	Recyclable	Returnable	Composite	
	Other	Plastic	355 g	- %				
	Other	Paper/Cardboard	1800 g	- %				
	Other	Wood	20000 g	- %				
	OTHER INFORMATION	Intrastat/Taric Code	1905					
		Commodity Code	1905908000					
	Manufacturer Comments							
	Minimum order quantities to be discussed and agreed with Food Connections							

CONTACT
INFORMATION

Address

Food Connections Ltd
Quorn House, Comet Way
Hermitage Industrial Estate
Coalville
Leicestershire
LE67 3FS
United Kingdom

P: (Phone) 01530 830180

Complaints Contact

Gillian Currie
Technical Manager
gillian.currie@foodconnections.co.uk

P: (Phone) 01530 830180

Technical Contact

Gillian Currie
Technical Manager
gillian.currie@foodconnections.co.uk

P: (Phone) 01530 830180

The information on the [Erudus System](#) has been supplied by the manufacturers of the products and, whilst the owners of the Erudus System take steps to ensure the information is regularly updated, they give no warranty and no guarantee that the information is accurate. Product information and ingredients may change, please always read product labels carefully in addition to using the information provided by Erudus.

We do not accept liability for any inaccuracies or incorrect information contained on this site.
Please visit <http://www.erudus.com/terms-and-conditions> for full terms and conditions.