


Changed Feb 13, 2024 10:26

Reviewed Feb 13, 2024 10:26

Erudus ID e3b39d644bf042d8ae99124caf3c7c71

Version 2.0



RECEIVED
Thomas Ridley QC Dept.
12:17 pm, 15 Feb 2024

The food information supplied by Thomas Ridley Foodservice has been provided by the respective product manufacturer. Whilst we use reasonable endeavours to check this information and ensure its accuracy, we do not give any warranty (whether express or implied), guarantee or representation that it is true, accurate or complete in any respect.

As product information, ingredients, nutritional guides and dietary or allergy advice may change from time to time, we recommend that you always carefully read the product label prior to using or consuming any such products. You should not solely rely upon the information we provide and make your own assessment as to the suitability or otherwise of any given product.



01057

Caramel Cream Bar Gateau

Caramel Cream Bar Gateau 1 X 16

PRODUCT DESCRIPTION

Chocolate sponge layered with Irish cream mousse and caramel, garnished with profiteroles.

Brand	Chantilly Patisserie
Manufacturer Product Code	01-16-001-9806
Product Type	Food
Product Category	Desserts
Storage Type	Frozen
Erudus ID	e3b39d644bf042d8ae99124caf3c7c71
Specification Type	Bakery Products



Outer Case GTIN 5060076949806



INGREDIENTS

Ingredient Declaration

Cream (**MILK**) (25%), Chocolate Sponge (Sugar, Wheat Flour (**WHEAT** Flour, Calcium Carbonate, Iron, Niacin, Thiamin), Whole **EGG**, Rapeseed Oil, Water, Modified Maize Starch, Cocoa Powder, Whey Powder (**MILK**), Raising Agents (Potassium Carbonates, Diphosphates), Dried Glucose Syrup, Salt, Natural Flavouring), Profiteroles (Cream (**MILK**), **EGG**, Water, Reconstituted Skimmed **MILK**, Vegetable Oil (Coconut, Palm), Wheat Flour (**WHEAT** Flour, Calcium Carbonate, Iron, Niacin, Thiamin), Sugar, Emulsifier (Mono & Di-glycerides of Fatty Acids), Maize Starch, Skimmed **MILK** Powder, Whole **MILK** Powder, Salt, Stabiliser (Carrageenan), Colour (Beta-Carotene), Flavouring), Water, Caramel Sauce (8%) (Condensed Skimmed **MILK**, Butter (**MILK**), Glucose Syrup, Partially Inverted Sugar Syrup, Water, Muscovado Sugar, Salt, Emulsifier (Mono & Di-glycerides of Fatty Acids), Gelling Agent (Pectin)), White Chocolate (6%) (Sugar, Cocoa Butter, Whole **MILK** Powder, Emulsifier (**SOYA** Lecithin), Natural Vanilla Flavouring), Sugar, Irish Cream Liqueur (**MILK**) (2%), Whisky (2%), Dark Chocolate (1%) (Sugar, Cocoa Mass, Cocoa Butter, Emulsifier (**SOYA** Lecithin), Natural Vanilla), Beef Gelatine, Dried Glucose Syrup, Modified Potato Starch, Dried **EGG** Yolk, Dried **EGG** White, Stabilisers (Carboxy Methyl Cellulose, Guar Gum), Acidity Regulator (Citric Acid, Diphosphates), Cocoa Powder, Salt.

ALLERGENS

Product Contains:

Celery/Celeriac	No	Mustard	No
Cereals Containing Gluten	Yes	Nuts (Tree)	May Contain
Barley	May Contain	Almond nuts	May Contain
Oats	May Contain	Brazil nuts	No
Rye	No	Cashew nuts	No
Wheat (including Spelt and Khorasan)	Yes	Hazelnuts	May Contain
Crustacea	No	Macadamia (Queensland) nuts	No
Eggs	Yes	Pecan nuts	May Contain
Fish	No	Pistachio nuts	May Contain
Lupin	No	Walnuts	No
Milk	Yes	Peanuts	No
Molluscs	No	Sesame Seeds	No
		Soybeans	Yes
		Sulphur Dioxide and Sulphites	May Contain

Risk Source:

Additional Allergen Information

Produced in a manufacturing site which uses Nuts, Sulphites, Gluten (from Oats), Gluten (from Barley).

SUPPLEMENTARY INGREDIENT INFORMATION

Palm Oil	Yes
Hydrogenated Vegetable Oil/Fat	No
GM Protein/DNA	No

ADDITIVES

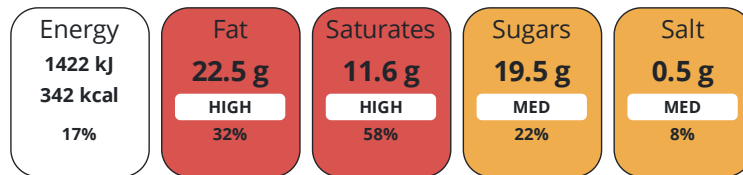
Product Contains:

Artificial Antioxidants	No	Artificial Flavourings	No
Artificial Colours	No	Artificial Preservatives	No
Artificial Flavour Enhancers	No	Artificial Sweeteners	No
Vegan Diet	No	Vegetarian Diet	No
Halal Diet	No	Kosher Diet	No

DIET SUITABILITY

NUTRITIONAL INFORMATION

Each 100g/ml portion contains:



of your reference intake.

Typical values per 100g/ml : Energy 342kcal / 1422kJ

Nutrient	per 100g	RI per 100g
Energy (kJ)	1422 kJ	17%
Energy (kcal)	342 kcal	17%
Fat	22.5 g	32%
of which Saturates	11.6 g	58%
of which Mono-unsaturates	7.7 g	
of which Polyunsaturates	2 g	
Carbohydrate	28.1 g	11%
of which Sugars	19.5 g	22%
of which Polyols	0 g	
of which Starch	8.6 g	
Fibre	0.6 g	
Protein	3.9 g	8%
Salt	0.5 g	8%
Sodium	200 mg	

VITAMINS AND MINERALS

Nutrient	per 100g	RI per 100g
Vitamin A	187 µg	23%
Vitamin C	0 mg	0%
Folate/Folic Acid	5 µg	3%
Calcium	36 mg	5%
Iron	0.2 mg	1%
Zinc	0.2 mg	2%

SUPPLEMENTARY
NUTRITIONAL
INFORMATION

Cholesterol per 100 g/ml (UK/FR)	0.05 g
Trans Fats per 100 g/ml	0.4 g

HANDLING &
STORAGE
INFORMATION

Directions For Use

To defrost, remove all packaging & refrigerate for 12 hours. Once defrosted, keep refrigerated and use within 4 days. Do not re-freeze.

Storage Instructions

Store at -18°C

Shelf Life from Time of Production	730 Days	Exempt From Shelf Life Labelling	No
---	----------	---	----

ACCREDITATIONS/
CERTIFICATIONS/
ASSURANCE
SCHEMES



Other Accreditation

None

ORIGIN

Product Country of Origin/Place of United Kingdom

Provenance

Additional Origin Details

N/A

PRODUCT
CHARACTERISTICS

Standards Testing

Do you undertake trend analysis of microbiological results?	No	Is shelf life testing undertaken?	No
--	----	--	----

Microbiological Standards

Organism	Description	Frequency	Target	Maximum	Sample (g or ml)
E. Coli (cfu/g or ml)		Occasionally	<20	100	10
Enterobacteriaceae (cfu/g or ml)		Occasionally	<10	10000	10
Listeria Monocytogenes (cfu/g or ml)	Absent in 25g	Occasionally	<0	0	25
Staphylococcus Aureus (cfu/g or ml)		Occasionally	<20	100	10
Total Viable Count (TVC) (cfu/g or ml)		Occasionally	<1000	1000000	10
Salmonella (cfu/g or ml)	Absent in 25g	Occasionally	<0	0	25

CONFIGURATION

Case Configuration

Inner Pack Configuration

Total Quantity of Inner Components in 1 Units

Outer Case

Is the Outer Case Splittable? No

PRODUCT
WEIGHTS

Inner Component

Variable Weight Consumer Item Yes

Net Drained Weight 0 g

Outer Case

Outer Case Gross Weight 1.78 kg

Outer Case Net Weight 1.5 kg

PRODUCT DIMENSIONS

Inner Component	
Inner Component Depth	440 mm
Inner Component Width	125 mm
Inner Component Height	60 mm
Outer Case	
Outer Case Depth	487 mm
Outer Case Width	150 mm
Outer Case Height	100 mm

PALLET INFORMATION

Quantity of Cases Per Pallet Layer	12 Cases	Pallet Height	1.2 MTR
Quantity of Layers Per Pallet	12 Layers	Pallet Gross Weight	256.3 kg
Quantity of Cases Per Pallet	144 Cases		

PACKAGING

Inner Component Packaging						
Type	Materials	Weight	Recycled Plastic %	Recyclable	Returnable	Composite
Box	Plastic	10 g	- %			
Box	Paper/Cardboard	55 g	- %			
Outer Case Packaging						
Type	Materials	Weight	Recycled Plastic %	Recyclable	Returnable	Composite
Case	Paper/Cardboard	215 g	- %			
Transport Packaging						
Type	Materials	Weight	Recycled Plastic %	Recyclable	Returnable	Composite
Other	Plastic	275 g	- %		Yes	
Other	Paper/Cardboard	500 g	- %		Yes	

OTHER INFORMATION

Intrastat/Taric Code	0
-----------------------------	---

Manufacturer Comments

Minimum order quantities are for a single layer of product . Providing that a total minimum of 144 cases to a maximum 180 cases are ordered the pallet can consist of mixed products.

CONTACT INFORMATION

Address	Technical Contact
Chantilly Patisserie	Claire Dawson
Aspen Way Yalberton Industrial Estate	Technical Director
Aspen Way	cdawson@chantillypatisserie.co.uk
Paignton	
Paignton	P: (Phone) +441803663434
TQ4 7QR	
England	
P: (Phone) 01803 663434	
Complaints Contact	Commercial Contact
Claire Dawson	Andrew Hart
Technical Director	Business Development Manager
cdawson@chantillypatisserie.co.uk	ahart@chantillypatisserie.co.uk
P: (Phone) +441803663434	P: (Phone) +441803663434

The information on the [Erudus System](#) has been supplied by the manufacturers of the products and, whilst the owners of the Erudus System take steps to ensure the information is regularly updated, they give no warranty and no guarantee that the information is accurate. Product information and ingredients may change, please always read product labels carefully in addition to using the information provided by Erudus.

We do not accept liability for any inaccuracies or incorrect information contained on this site.
Please visit <http://www.erudus.com/terms-and-conditions> for full terms and conditions.