

Changed Feb 22, 2024 17:15

Reviewed Feb 22, 2024 17:15

Erudus ID 4c3a406fda9a439ba2c4ddd9cabbed1b

Version 2.0

01134

Paterson's Rough Oatcakes

Rough Oatcakes

PRODUCT DESCRIPTION

Paterson's Rough Oatcakes 250g x 8

Brand	Burton's Food Limited
Manufacturer Product Code	F6446
Product Type	Food
Product Category	Biscuits, Wafers and Crackers
Storage Type	Ambient
Erudus ID	4c3a406fda9a439ba2c4ddd9cabbed1b
Specification Type	Bakery Products

Inner Component GTIN	5010745064460
Manufacturer Component Code	F6446
Outer Case GTIN	05010665964468



INGREDIENTS

Ingredient Declaration

Oatmeal (96%), Sunflower Oil, Salt.

ALLERGENS

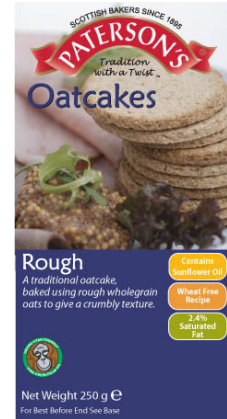
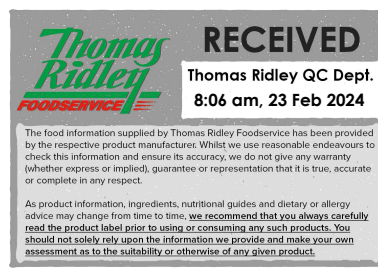
Product Contains:

Celery/Celериac	No	Mustard	No
Cereals Containing Gluten	Yes	Nuts (Tree)	No
Barley	No	Almond nuts	No
Oats	Yes	Brazil nuts	No
Rye	No	Cashew nuts	No
Wheat (including Spelt and Khorasan)	May Contain	Hazelnuts	No
Crustacea	No	Macadamia (Queensland) nuts	No
Eggs	No	Pecan nuts	No
Fish	No	Pistachio nuts	No
Lupin	No	Walnuts	No
Milk	No	Peanuts	No
Molluscs	No	Sesame Seeds	No
		Soybeans	No
		Sulphur Dioxide and Sulphites	No

Risk Source:

Additional Allergen Information

For allergy advice see ingredients in bold. May also contain Milk and traces of Wheat. Not suitable for Milk allergy sufferers due to manufacturing methods.



SUPPLEMENTARY
INGREDIENT
INFORMATION

Palm Oil	No
Hydrogenated Vegetable Oil/Fat	No
GM Protein/DNA	No

ADDITIVES

Product Contains:

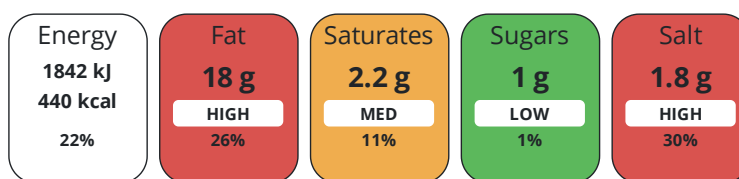
Artificial Antioxidants	No	Artificial Flavourings	No
Artificial Colours	No	Artificial Preservatives	No
Artificial Flavour Enhancers	No	Artificial Sweeteners	No

DIET
SUITABILITY

Vegan Diet	Suitable for	Vegetarian Diet	Suitable for
Halal Diet	No	Kosher Diet	No

NUTRITIONAL
INFORMATION

Each 100g/ml portion contains:



of your reference intake.

Typical values per 100g/ml : Energy 440kcal / 1842kj

Nutrient	per 100g	RI per 100g	per 1g serving	RI per 1g serving
Energy (kJ)	1842 kJ	22%	18.4 kJ	0%
Energy (kcal)	440 kcal	22%	4.4 kcal	0%
Fat	18 g	26%	0.2 g	0%
of which Saturates	2.2 g	11%	-	
Carbohydrate	54 g	21%	0.5 g	0%
of which Sugars	1 g	1%	-	
Fibre	8.8 g		0.1 g	
Protein	12 g	24%	0.1 g	0%
Salt	1.8 g	30%	-	

Serving Size	1 g
Serving Size Description	1 Oatcake
Number of Servings	20 Servings

Source of Nutritional Information Calculation based on known values of ingredients

SUPPLEMENTARY
NUTRITIONAL
INFORMATION

HANDLING &
STORAGE
INFORMATION

Directions For Use

Ready to eat

Storage Instructions

Store in a cool dry place

Shelf Life from Time of Production	240 Days	Exempt From Shelf Life Labelling	No
---	----------	---	----

ACCREDITATIONS/
CERTIFICATIONS/
ASSURANCE
SCHEMES



ORIGIN	Product Country of Origin/Place of Provenance		United Kingdom				
PRODUCT CHARACTERISTICS CONFIGURATION	Additional Origin Details						
	UK						
	Standards Testing			Inner Pack Configuration			
	Case Configuration			Count per Inner Component			
PRODUCT WEIGHTS	Total Quantity of Inner Components in Outer Case	8 Units					
	Is the Outer Case Splittable?	No					
	Inner Component						
	Variable Weight Consumer Item	Yes					
	Inner Component Weight	25 g					
	e mark	Yes					
	Outer Case						
	Outer Case Gross Weight	2.32 kg					
	Outer Case Net Weight	2 kg					
	PRODUCT DIMENSIONS	Inner Component					
Inner Component Depth		162 mm					
Inner Component Width		70 mm					
Inner Component Height		82 mm					
Outer Case							
Outer Case Depth		285 mm					
Outer Case Width		178 mm					
Outer Case Height		166 mm					
PALLET INFORMATION		Quantity of Cases Per Pallet Layer	22 Cases	Pallet Height	1.5 MTR		
		Quantity of Layers Per Pallet	8 Layers	Pallet Gross Weight	423 kg		
	Quantity of Cases Per Pallet	176 Cases					
	Inner Component Packaging						
PACKAGING	Type	Materials	Weight	Recycled Plastic %	Recyclable	Returnable	Composite
	Film	Plastic	3.6 g	- %			
	Film	Paper/Cardboard	23 g	- %			
	Outer Case Packaging						
	Type	Materials	Weight	Recycled Plastic %	Recyclable	Returnable	Composite
	Case	Paper/Cardboard	103 g	- %			
	Transport Packaging						
	Type	Materials	Weight	Recycled Plastic %	Recyclable	Returnable	Composite
	Other	Plastic	300 g	- %			
	Other	Wood	28000 g	- %			
	OTHER INFORMATION	Manufacturer Comments					
		4 packs wrapped in clear film packed in carton, 8 cartons per outer case. May contain traces of nuts. Suitable for vegetarians Free from Pork Fats and Alcohol.					

CONTACT
INFORMATION

Address

Burton's Food Limited
Burtons Biscuits, Charter Court
74-78 Victoria St
St Albans
Hertfordshire
AL1 3XH
United Kingdom

P: (Phone) 01727899700

Complaints Contact

Neil Harrison
Group Technical Manager
Neil.Harrison@burtonsbiscuits.com

Technical Contact

Neil Harrison
Group Technical Manager
Neil.Harrison@burtonsbiscuits.com

P: (Phone) 07590 417654

Commercial Contact

Nicola Bezer
Food Service Development Director
nicola.bezer@burtonsbiscuits.com

The information on the [Erudus System](#) has been supplied by the manufacturers of the products and, whilst the owners of the Erudus System take steps to ensure the information is regularly updated, they give no warranty and no guarantee that the information is accurate. Product information and ingredients may change, please always read product labels carefully in addition to using the information provided by Erudus.

We do not accept liability for any inaccuracies or incorrect information contained on this site.
Please visit <http://www.erudus.com/terms-and-conditions> for full terms and conditions.