

Changed Jun 14, 2022 09:16

Erudus ID b0c8ec3fdfa64457ae267c0a7618880a

Version 1.0

01204

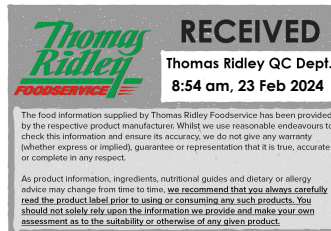
Lotus Biscoff Bitesize Biscuit 300 x 6.25g

Lotus Biscoff Bitesize Biscuit 300 X 6.25g

PRODUCT DESCRIPTION

An individually-wrapped Lotus Biscoff biscuit to be served as an accompaniment to coffee.

Brand	Lotus Bakeries UK Ltd
Manufacturer Product Code	65628
Product Type	Food
Product Category	Biscuits, Wafers and Crackers
Storage Type	Ambient
Erudus ID	b0c8ec3fdfa64457ae267c0a7618880a
Specification Type	Legacy



Outer Case GTIN 5410126106282



INGREDIENTS

Ingredient Declaration

WHEAT flour, sugar, vegetable oils (palm*, rapeseed), candy sugar syrup, raising agent (sodium hydrogen carbonate), **SOYA** flour, salt, cinnamon. *palm oil from sustainable and certified plantations

ALLERGENS

Product Contains:

Celery/Celery	No	Mustard	No
Cereals Containing Gluten	Yes	Nuts (Tree)	No
Barley	No	Almond nuts	No
Oats	No	Brazil nuts	No
Rye	No	Cashew nuts	No
Wheat (including Spelt and Khorasan)	Yes	Hazelnuts	No
Crustacea	No	Macadamia (Queensland) nuts	No
Eggs	No	Pecan nuts	No
Fish	No	Pistachio nuts	No
Lupin	No	Walnuts	No
Milk	No	Peanuts	No
Molluscs	No	Sesame Seeds	No
		Soybeans	Yes
		Sulphur Dioxide and Sulphites	No

SUPPLEMENTARY INGREDIENT INFORMATION

Palm Oil	Yes
Hydrogenated Vegetable Oil/Fat	No
GM Protein/DNA	No

ADDITIVES

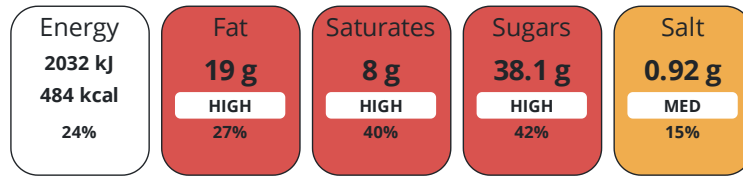
Product Contains:

Artificial Antioxidants	No	Artificial Flavourings	No
Artificial Colours	No	Artificial Preservatives	No
Artificial Flavour Enhancers	No	Artificial Sweeteners	No
Suitable for Coeliacs	No	Halal Diet	Suitable for
Kosher Diet	No	Vegetarian Diet	Suitable for
Vegan Diet	Suitable for		

DIET SUITABILITY

NUTRITIONAL INFORMATION

Each 100g/ml portion contains:



of your reference intake.

Typical values per 100g/ml : Energy 484kcal / 2032kj

Nutrient	per 100g/ml	RI per 100g/ml	per 6.25g/ml serving	RI per 6.25g/ml serving
Energy (kJ)	2032 kJ	24%	127 kJ	2%
Energy (kcal)	484 kcal	24%	30.3 kcal	2%
Fat	19 g	27%	1.2 g	2%
of which Saturates	8 g	40%	0.5 g	3%
of which Mono-unsaturates	8.1 g		0.5 g	
of which Polyunsaturates	2.8 g		0.2 g	
Carbohydrate	72.6 g	28%	4.5 g	2%
of which Sugars	38.1 g	42%	2.4 g	3%
of which Starch	34.3 g		2.1 g	
Fibre	1.3 g		0.1 g	
Protein	4.9 g	10%	0.3 g	1%
Salt	0.92 g	15%	0.1 g	2%
Sodium	370 mg		23.1 mg	
Serving Size	6.25 g			

VITAMINS AND MINERALS

Nutrient	per 100g/ml	RI per 100g/ml	per 6.25g/ml serving	RI per 6.25g/ml serving
Calcium	20 mg	3%	1.3 mg	0%
Iron	0.5 mg	4%	-	

SUPPLEMENTARY NUTRITIONAL INFORMATION

Cholesterol per 100 g/ml (UK/FR)	0 g
Trans Fats per 100 g/ml	0.1 g

HANDLING & STORAGE INFORMATION

Directions For Use
Serve with coffee, tea, hot chocolate

Storage Instructions
Store at ambient temperature.

Shelf Life from Time of Production 210 Days

ORIGIN	Product Country of Origin/Place of Provenance		Belgium				
PRODUCT CHARACTERISTICS	Standards Testing						
	Do you undertake trend analysis of microbiological results?	No	Is shelf life testing undertaken?		No		
CONFIGURATION	Case Configuration		Inner Pack Configuration				
	Total Quantity of Inner Components in Outer Case	300 Units					
	Is the Outer Case Splittable?	No					
PRODUCT WEIGHTS	Inner Component						
	Variable Weight Consumer Item Weight/Volume	No					
	6.25g biscuit						
	Outer Case						
	Outer Case Gross Weight	2.18 kg					
	Outer Case Net Weight	1.88 kg					
PRODUCT DIMENSIONS	Inner Component						
	Inner Component Depth	65 mm					
	Inner Component Width	7 mm					
	Inner Component Height	35 mm					
	Outer Case						
	Outer Case Depth	330 mm					
	Outer Case Width	187 mm					
	Outer Case Height	120 mm					
	PALLET INFORMATION	Quantity of Cases Per Pallet Layer	18 Cases	Pallet Height		1.81 MTR	
Quantity of Layers Per Pallet		15 Layers	Pallet Gross Weight		616.6 kg		
Quantity of Cases Per Pallet		270 Cases					
PACKAGING	Transport Packaging						
	Type	Materials	Weight	Recycled Plastic %	Recyclable	Returnable	Composite
	Other	Wood	2800 g	- %		Yes	
OTHER INFORMATION	Intrastat/Taric Code	1905319900					
	Commodity Code	19053199					

CONTACT
INFORMATION

Address

Lotus Bakeries UK Ltd
3000 Manchester Business Park
Aviator Way
Manchester
Lancashire
M22 5TG
United Kingdom

P. (Phone) 07809156101

The information on the [Erudus System](#) has been supplied by the manufacturers of the products and, whilst the owners of the Erudus System take steps to ensure the information is regularly updated, they give no warranty and no guarantee that the information is accurate. Product information and ingredients may change, please always read product labels carefully in addition to using the information provided by Erudus.

We do not accept liability for any inaccuracies or incorrect information contained on this site.
Please visit <http://www.erudus.com/terms-and-conditions> for full terms and conditions.