

Changed Jan 30, 2024 10:06

Reviewed Jan 30, 2024 10:06

Erudus ID eb150ca43794469ba219b86130df888f

Version 2.0

RECEIVED
 Thomas Ridley QC Dept.
 10:56 am, 30 Jan 2024

The food information supplied by Thomas Ridley Foodservice has been provided by the respective product manufacturers. Whilst we use reasonable endeavours to check this information and ensure its accuracy, we do not give any warranty (whether express or implied), guarantee or representation that it is true, accurate or complete in any respect.

As product information, ingredients, nutritional guides and dietary or allergy advice may change from time to time, we recommend that you always carefully read the product label prior to using or consuming any such products. You should not solely rely upon the information we provide and make your own assessment as to the suitability or otherwise of any given product.



4 x 1.15kg Opies Red Onion Chutney

Red Onion Chutney 4x1150g

PRODUCT DESCRIPTION

4 x 1.15kg Opies Red Onion Chutney

| | |
|----------------------------------|----------------------------------|
| Brand | Bennett Opie Ltd |
| Manufacturer Product Code | D955 |
| Product Type | Food |
| Product Category | Condiments |
| Storage Type | Ambient |
| Erudus ID | eb150ca43794469ba219b86130df888f |
| Specification Type | Generic |



| | |
|-----------------------------|----------------|
| Inner Component GTIN | 5010392019554 |
| Outer Case GTIN | 05010392419552 |



INGREDIENTS

Ingredient Declaration

Red Onion (58%); Brown Sugar; Balsamic Vinegar (9.6%); Onion; Sunflower Oil; Modified Starch; Concentrated Lemon Juice; Gelling agent (Pectin)

ALLERGENS

Product Contains:

| | | | |
|---|----|--------------------------------------|----|
| Celery/Celериac | No | Mustard | No |
| Cereals Containing Gluten | No | Nuts (Tree) | No |
| Barley | No | Almond nuts | No |
| Oats | No | Brazil nuts | No |
| Rye | No | Cashew nuts | No |
| Wheat (including Spelt and Khorasan) | No | Hazelnuts | No |
| Crustacea | No | Macadamia (Queensland) nuts | No |
| Eggs | No | Pecan nuts | No |
| Fish | No | Pistachio nuts | No |
| Lupin | No | Walnuts | No |
| Milk | No | Peanuts | No |
| Molluscs | No | Sesame Seeds | No |
| | | Soybeans | No |
| | | Sulphur Dioxide and Sulphites | No |

SUPPLEMENTARY INGREDIENT INFORMATION

| | |
|---------------------------------------|----|
| Palm Oil | No |
| Hydrogenated Vegetable Oil/Fat | No |
| GM Protein/DNA | No |

ADDITIVES

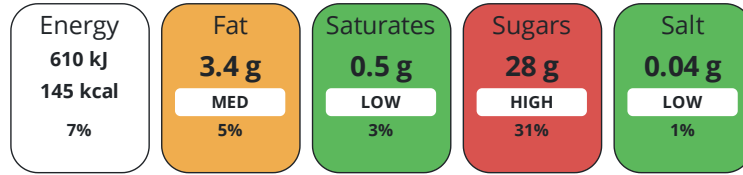
Product Contains:

| | | | |
|-------------------------------------|--------------|---------------------------------|--------------|
| Artificial Antioxidants | No | Artificial Flavourings | No |
| Artificial Colours | No | Artificial Preservatives | No |
| Artificial Flavour Enhancers | No | Artificial Sweeteners | No |
| Vegan Diet | Suitable for | Vegetarian Diet | Suitable for |
| Halal Diet | No | Kosher Diet | No |

DIET
SUITABILITY

NUTRITIONAL
INFORMATION

Each 100g/ml portion contains:



of your reference intake.

Typical values per 100g/ml : Energy 145kcal / 610kj

| Nutrient | per 100g | RI per 100g |
|---------------------------|----------|-------------|
| Energy (kJ) | 610 kJ | 7% |
| Energy (kcal) | 145 kcal | 7% |
| Fat | 3.4 g | 5% |
| of which Saturates | 0.5 g | 3% |
| Carbohydrate | 28 g | 11% |
| of which Sugars | 28 g | 31% |
| Fibre | 1.7 g | |
| Protein | 1.2 g | 2% |
| Salt | 0.04 g | 1% |

Source of Nutritional Information Manufacturers analysis

SUPPLEMENTARY
NUTRITIONAL
INFORMATION

HANDLING &
STORAGE
INFORMATION

Directions For Use

N/A

Storage Instructions

store in a cool dry place. Refrigerate after opening and consume within 4 weeks

| | | | |
|---|----------|---|----|
| Shelf Life from Time of Production | 547 Days | Exempt From Shelf Life Labelling | No |
|---|----------|---|----|

ACCREDITATIONS/
CERTIFICATIONS/
ASSURANCE
SCHEMES



Other Accreditation

n/a

ORIGIN

Product Country of Origin/Place of United Kingdom

Provenance

Additional Origin Details

UK

PRODUCT
CHARACTERISTICS

Standards Testing

| | | | | | | | |
|--------------------|--|--------------------|--|---------------------------|-------------------|-------------------------|------------------|
| | Do you undertake trend analysis of microbiological results? | Yes | Is shelf life testing undertaken? | Yes | | | |
| | Microbiological Standards | | | | | | |
| | Organism | Description | Frequency | Target | Maximum | Sample (g or ml) | |
| | Total Viable Count (TVC) (cfu/g or ml) | | Annually | <1000 | 1000 | 100 | |
| | Yeast (cfu/g or ml) | | Annually | <21 | 21 | 100 | |
| | Moulds (cfu/g or ml) | | Annually | <21 | 21 | 100 | |
| | Analytical Standards | | | | | | |
| | Test | Description | Frequency | Target | Range | Sample (g or ml) | |
| | Acidity (%) | | Every Batch | =0.7 | 0.4 to 1 | 100 | |
| | Brix °Bx | | Every Batch | =31 | 28 to 35 | 100 | |
| | pH | | Every Batch | =3.6 | 3.4 to 3.9 | 100 | |
| CONFIGURATION | Case Configuration | | Inner Pack Configuration | | | | |
| | Total Quantity of Inner Components in Outer Case | 4 Units | | | | | |
| | Is the Outer Case Splittable? | No | | | | | |
| PRODUCT WEIGHTS | Inner Component | | | | | | |
| | Variable Weight Consumer Item | No | | | | | |
| | Inner Component Weight | 1150 g | | | | | |
| | e mark | Yes | | | | | |
| | Outer Case | | | | | | |
| | Outer Case Gross Weight | 8 kg | | | | | |
| | Outer Case Net Weight | 4.6 kg | | | | | |
| PRODUCT DIMENSIONS | Inner Component | | | | | | |
| | Inner Component Depth | 108 mm | | | | | |
| | Inner Component Width | 81 mm | | | | | |
| | Inner Component Height | 190 mm | | | | | |
| | Outer Case | | | | | | |
| | Outer Case Depth | 205 mm | | | | | |
| | Outer Case Width | 195 mm | | | | | |
| | Outer Case Height | 190 mm | | | | | |
| PALLET INFORMATION | Quantity of Cases Per Pallet Layer | 26 Cases | Pallet Height | 1.2 MTR | | | |
| | Quantity of Layers Per Pallet | 5 Layers | Pallet Gross Weight | 999.99 kg | | | |
| | Quantity of Cases Per Pallet | 130 Cases | | | | | |
| PACKAGING | Inner Component Packaging | | | | | | |
| | Type | Materials | Weight | Recycled Plastic % | Recyclable | Returnable | Composite |
| | Jar | Plastic | 75 g | 0.00 % | | | |
| | Outer Case Packaging | | | | | | |
| | Type | Materials | Weight | Recycled Plastic % | Recyclable | Returnable | Composite |
| | Case | Plastic | 310 g | 0.00 % | | | |
| | Case | Paper/Cardboard | 31 g | - % | | | |

Transport Packaging

| Type | Materials | Weight | Recycled Plastic % | Recyclable | Returnable | Composite |
|-------|-----------|---------|--------------------|------------|------------|-----------|
| Other | Plastic | 300 g | 0.00 % | | | |
| Other | Wood | 30000 g | - % | | | |

OTHER INFORMATION

| | |
|-----------------------------|------------|
| Intrastat/Taric Code | 2001909756 |
| Commodity Code | 2001909756 |

Manufacturer Comments

Order Quantity Minimum - £750

CONTACT INFORMATION

Address

Bennett Opie Ltd
 Wentworth Court
 Sittingbourne
 Kent
 ME10 3RN
 England

Technical Contact

Milena Gradowska
 Technical Manager
 milena.gradowska@b-opie.com

P: (Phone) 01795413737

P: (Phone) 01795 476154

The information on the [Erudus System](#) has been supplied by the manufacturers of the products and, whilst the owners of the Erudus System take steps to ensure the information is regularly updated, they give no warranty and no guarantee that the information is accurate. Product information and ingredients may change, please always read product labels carefully in addition to using the information provided by Erudus.

We do not accept liability for any inaccuracies or incorrect information contained on this site.
 Please visit <http://www.erudus.com/terms-and-conditions> for full terms and conditions.