

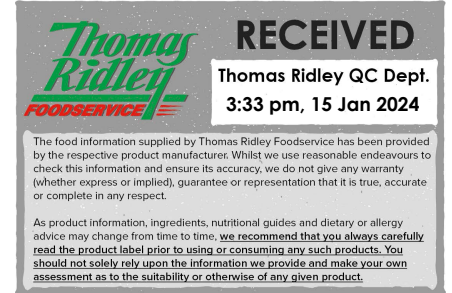
# Mixed Fruit Jam 2x3.18kg

Hartley's Mixed Fruit Jam 2 x 3.18kg

## PRODUCT DESCRIPTION

A red gel with fruit fibre visible

<b>Brand</b>	Hain Daniels Group
<b>Manufacturer Product Code</b>	10000580
<b>Product Type</b>	Food
<b>Product Category</b>	Preserves and Spreads
<b>Storage Type</b>	Ambient
<b>Erudus ID</b>	20f9ae6d28e84d1d9136d4e4820e361b
<b>Specification Type</b>	Legacy
<b>Inner Component GTIN</b>	5000354162183
<b>Outer Case GTIN</b>	5000117083960



## INGREDIENTS

### Ingredient Declaration

Sugar, Apple, Plum, Rhubarb, Raspberry, Gelling Agent (Pectin), Acidity Regulator (Sodium Citrates), Acid (Citric Acid), Colour (Anthocyanins), Preservative (SULPHUR DIOXIDE).

Prepared with 35g of fruit per 100g.

Total sugar content 64g per 100g.

This product may contain pieces of fruit stone.

## ALLERGENS

Product Contains:

<b>Celery/Celeriac</b>	No	<b>Mustard</b>	No
<b>Cereals Containing Gluten</b>	No	<b>Nuts (Tree)</b>	No
<b>Barley</b>	No	<b>Almond nuts</b>	No
<b>Oats</b>	No	<b>Brazil nuts</b>	No
<b>Rye</b>	No	<b>Cashew nuts</b>	No
<b>Wheat (including Spelt and Khorasan)</b>	No	<b>Hazelnuts</b>	No
<b>Gluten content &lt;20ppm</b>	No	<b>Macadamia (Queensland) nuts</b>	No
<b>Crustacea</b>	No	<b>Pecan nuts</b>	No
<b>Eggs</b>	No	<b>Pistachio nuts</b>	No
<b>Fish</b>	No	<b>Walnuts</b>	No
<b>Lupin</b>	No	<b>Peanuts</b>	No
<b>Milk</b>	No	<b>Sesame Seeds</b>	No
<b>Molluscs</b>	No	<b>Soybeans</b>	No
		<b>Sulphur Dioxide and Sulphites</b>	Yes

## SUPPLEMENTARY INGREDIENT INFORMATION

<b>Palm Oil</b>	No
<b>Hydrogenated Vegetable Oil/Fat</b>	No
<b>GM Protein/DNA</b>	No

ADDITIVES

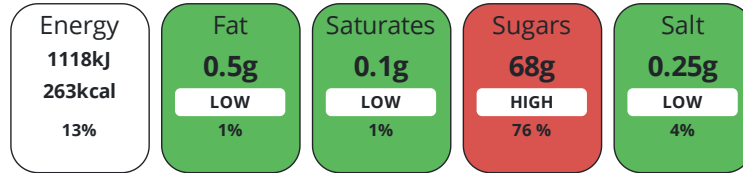
Product Contains:

<b>Artificial Antioxidants</b>	No	<b>Artificial Flavourings</b>	No
<b>Artificial Colours</b>	No	<b>Artificial Preservatives</b>	No
<b>Artificial Flavour Enhancers</b>	No	<b>Artificial Sweeteners</b>	No
<b>Halal Diet</b>	No	<b>Kosher Diet</b>	No
<b>Vegetarian Diet</b>	No	<b>Vegan Diet</b>	No

DIET SUITABILITY

NUTRITIONAL INFORMATION

Each 100g/ml portion contains:



of your reference intake.

Typical values per 100g/ml : Energy 263kcal / 1118kj

Nutrient	per 100g/ml	RI per 100g/ml
<b>Energy (kj)</b>	1118 kj	13%
<b>Energy (kcal)</b>	263 kcal	13%
<b>Fat</b>	< 0.5 g	1%
<b>of which Saturates</b>	< 0.1 g	1%
<b>Carbohydrate</b>	68 g	26%
<b>of which Sugars</b>	68 g	76%
<b>Protein</b>	< 0.5 g	1%
<b>Salt</b>	0.25 g	4%

SUPPLEMENTARY NUTRITIONAL INFORMATION

HANDLING & STORAGE INFORMATION

**Directions For Use**

N/A

**Storage Instructions**

Once opened keep refrigerated and consume within six weeks.

**Shelf Life from Time of Production** 365 Days

ACCREDITATIONS/ CERTIFICATIONS/ ASSURANCE SCHEMES



**Other Accreditation**

N/A

ORIGIN

**Product Country of Origin/Place of** United Kingdom

**Provenance**

**Additional Origin Details**

United Kingdom

PRODUCT CHARACTERISTICS

Standards Testing

**Do you undertake trend analysis of microbiological results?** No

**Is shelf life testing undertaken?** No

CONFIGURATION	Case Configuration		Inner Pack Configuration				
	<b>Total Quantity of Inner Components in Outer Case</b>	2 Units					
	<b>Is the Outer Case Splittable?</b>	Yes					
PRODUCT WEIGHTS	Inner Component						
	<b>Variable Weight Consumer Item</b>	No					
	<b>Inner Component Weight</b>	3.18 kg					
	<b>Weight/Volume</b>						
	3.18						
	Outer Case						
PRODUCT DIMENSIONS	<b>Outer Case Gross Weight</b>		6.74 kg				
	<b>Outer Case Net Weight</b>		6.36 kg				
	Inner Component						
	<b>Inner Component Depth</b>		198 mm				
	<b>Inner Component Width</b>		198 mm				
	<b>Inner Component Height</b>		138 mm				
	Outer Case						
	<b>Outer Case Depth</b>		388 mm				
	<b>Outer Case Width</b>		198 mm				
PALLET INFORMATION	<b>Outer Case Height</b>		141 mm				
	<b>Quantity of Cases Per Pallet Layer</b>	15 Cases	<b>Pallet Height</b>	1.43 MTR			
	<b>Quantity of Layers Per Pallet</b>	9 Layers	<b>Pallet Gross Weight</b>	937.15 kg			
	<b>Quantity of Cases Per Pallet</b>	135 Cases					
	PACKAGING						
Inner Component Packaging							
<b>Type</b>	<b>Materials</b>	<b>Weight</b>	<b>Recycled Plastic %</b>	<b>Recyclable</b>	<b>Returnable</b>	<b>Composite</b>	
Tub	Plastic	150 g	- %				
Outer Case Packaging							
<b>Type</b>	<b>Materials</b>	<b>Weight</b>	<b>Recycled Plastic %</b>	<b>Recyclable</b>	<b>Returnable</b>	<b>Composite</b>	
Case	Plastic	13 g	- %				
Case	Paper/Cardboard	50.3 g	- %				
Transport Packaging							
<b>Type</b>	<b>Materials</b>	<b>Weight</b>	<b>Recycled Plastic %</b>	<b>Recyclable</b>	<b>Returnable</b>	<b>Composite</b>	
Other	Plastic	400 g	- %		Yes		
Other	Wood	25 g	- %		Yes		
OTHER INFORMATION	<b>Commodity Code</b>	2007993980					
	<b>Manufacturer Comments</b>	N/A					

CONTACT  
INFORMATION

Address

Hain Daniels Group  
Templar House, 4225 Park Approach  
Thorpe Park  
Leeds  
Yorkshire  
LS15 8GB  
England

~~P. (Phone)~~ 03300551638

The information on the [Erudus System](#) has been supplied by the manufacturers of the products and, whilst the owners of the Erudus System take steps to ensure the information is regularly updated, they give no warranty and no guarantee that the information is accurate. Product information and ingredients may change, please always read product labels carefully in addition to using the information provided by Erudus.

We do not accept liability for any inaccuracies or incorrect information contained on this site.  
Please visit <http://www.erudus.com/terms-and-conditions> for full terms and conditions.