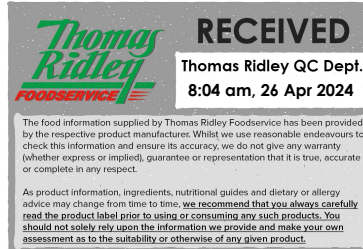


Changed Apr 25, 2024 00:00
Reviewed Apr 24, 2024 11:23
Erudus ID 7e8053e5aa3542d08741f4404200762c
Version 2.0



Thomas Ridley
FOODSERVICE

RECEIVED
Thomas Ridley QC Dept.
8:04 am, 26 Apr 2024

The food information supplied by Thomas Ridley Foodservice has been provided by the respective product manufacturers. Whilst we use reasonable endeavours to check this information and ensure its accuracy, we do not give any warranty (whether express or implied), guarantee or representation that it is true, accurate or complete in any respect.

As product information, ingredients, nutritional guides and dietary or allergy advice may change from time to time, we recommend that you always carefully read the product label prior to using or consuming any such products. You should not solely rely upon the information we provide and make your own assessment as to the suitability or otherwise of any given product.



Folkington's Lemon & mint presse 12 x 250ml

Lemon & Mint Presse 12x250ml

PRODUCT DESCRIPTION

Gently sparkling lemon & mint pressé, made with pure Sicilian lemon juice and the essential oils of English grown mint.

Brand	Folkington's / Metro Drinks
Manufacturer Product Code	FG025LM
Manufacturer Version Number	2024 spec sheet updates
Effective Date	Apr 24, 2024
Product Type	Drink
Product Category	Carbonated & Soft Drinks
Storage Type	Ambient
Erudus ID	7e8053e5aa3542d08741f4404200762c
Specification Type	Drinks



Inner Component GTIN	5060042981342
Outer Case GTIN	5060042981359



INGREDIENTS

Ingredient Declaration

Carbonated water, sugar, 8.8% lemon juice NFC, 1.3% pure English mint essential oil and extract, natural plant colour

ALLERGENS

Product Contains:

Celery/Celeriac	No
Cereals Containing Gluten	No
Barley	No
Oats	No
Rye	No
Wheat (including Spelt and Khorasan)	No
Crustacea	No
Eggs	No
Fish	No
Lupin	No
Milk	No
Molluscs	No
Mustard	No
Nuts (Tree)	No
Almond nuts	No
Brazil nuts	No
Cashew nuts	No
Hazelnuts	No
Macadamia (Queensland) nuts	No
Pecan nuts	No
Pistachio nuts	No
Walnuts	No
Peanuts	No
Sesame Seeds	No
Soybeans	No
Sulphur Dioxide and Sulphites	No

Additional Allergen Information

No Allergens

SUPPLEMENTARY INGREDIENT INFORMATION

Palm Oil	No
Hydrogenated Vegetable Oil/Fat	No
GM Protein/DNA	No

ADDITIVES

Product Contains:

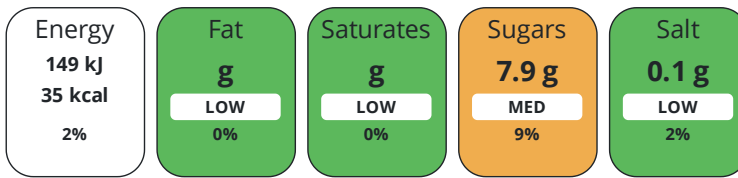
Artificial Antioxidants	No
Artificial Colours	No
Artificial Flavour Enhancers	No
Artificial Flavourings	No
Artificial Preservatives	No
Artificial Sweeteners	No

DIET SUITABILITY

Vegan Diet	Suitable for	Vegetarian Diet	Suitable for
Halal Diet	No	Kosher Diet	No

NUTRITIONAL INFORMATION

Each 100g/ml portion contains:



of your reference intake.

Typical values per 100g/ml : Energy 35kcal / 149kj

Nutrient	per 100ml	RI per 100ml	per 250ml serving	RI per 250ml serving
Energy (kJ)	149 kJ	2%	372.5 kJ	4%
Energy (kcal)	35 kcal	2%	87.5 kcal	4%
Fat	0 g	0%	-	-
of which Saturates	0 g	0%	-	-
Carbohydrate	8.5 g	3%	21.3 g	8%
of which Sugars	7.9 g	9%	19.8 g	22%
Protein	< 0.5 g	1%	1.3 g	3%
Salt	0.1 g	2%	0.3 g	5%
Serving Size			250 ml	

SUPPLEMENTARY NUTRITIONAL INFORMATION

HANDLING & STORAGE INFORMATION

Directions For Use

Drink chilled. Handle with care. Do not dent or knock against other hard surfaces

Storage Instructions

Store at room temperature and away from direct sunlight

Storage Instructions After Opening

Once opened, keep refrigerated below 5 deg C and consume within 24 hours of opening.

Shelf Life from Time of Production

728 Days

Exempt From Shelf Life Labelling

No

ACCREDITATIONS/ CERTIFICATIONS/ ASSURANCE SCHEMES

IFS Food Standard

ORIGIN

Product Country of Origin/Place of Italy

Provenance

PRODUCT CHARACTERISTICS

Standards Testing

CONFIGURATION

Case Configuration

Total Quantity of Inner Components in Outer Case

12 Units

Is the Outer Case Splittable?

Yes

Inner Pack Configuration

PRODUCT WEIGHTS

Inner Component

Inner Component Volume	250 ml
-------------------------------	--------

Outer Case

Outer Case Gross Weight	3.2 kg
--------------------------------	--------

Outer Case Net Weight	3.12 kg
------------------------------	---------

PRODUCT DIMENSIONS

Inner Component

Inner Component Depth	52 mm
------------------------------	-------

Inner Component Width	52 mm
------------------------------	-------

Inner Component Height	135 mm
-------------------------------	--------

Outer Case

Outer Case Depth	220 mm
-------------------------	--------

Outer Case Width	165 mm
-------------------------	--------

Outer Case Height	135 mm
--------------------------	--------

PALLET INFORMATION

Quantity of Cases Per Pallet Layer	30 Cases
---	----------

Quantity of Layers Per Pallet	10 Layers
--------------------------------------	-----------

Quantity of Cases Per Pallet	300 Cases
-------------------------------------	-----------

Pallet Height	1.6 MTR
----------------------	---------

Pallet Gross Weight	988.6 kg
----------------------------	----------

PACKAGING

Inner Component Packaging

Type	Materials	Weight	Recycled Plastic %	Recyclable	Returnable	Composite
Can	Aluminium	10.7 g	- %	Yes	No	

Outer Case Packaging

Type	Materials	Weight	Recycled Plastic %	Recyclable	Returnable	Composite
Case	Paper/Cardboard	28.1 g	- %	Yes	No	
Shrink Wrap	Plastic / LDPE (Low Density Polyethylene)	25 g	- %	Yes	No	

Transport Packaging

Type	Materials	Weight	Recycled Plastic %	Recyclable	Returnable	Composite
Other	Wood	28000 g	- %		No	

MARKETING INFORMATION

Marketing Description

A refreshing Sicilian lemonade, with a lovely mint twist

OTHER INFORMATION

Intrastat/Taric Code	22029010
-----------------------------	----------

Commodity Code	22021000
-----------------------	----------

Value Added Tax Rate	20%
-----------------------------	-----

CONTACT INFORMATION

Address

Folkington's / Metro Drinks

The Workshop

Endlewick House

Arlington

BN26 6RU

England

P: (Phone) 01323 485602

The information on the [Erudus System](#) has been supplied by the manufacturers of the products and, whilst the owners of the Erudus System take steps to ensure the information is regularly updated, they give no warranty and no guarantee that the information is accurate. Product information and ingredients may change, please always read product labels carefully in addition to using the information provided by Erudus.

We do not accept liability for any inaccuracies or incorrect information contained on this site.

Please visit <http://www.erudus.com/terms-and-conditions> for full terms and conditions.