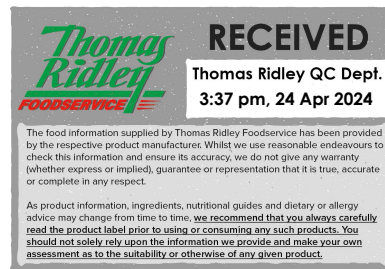


Changed Apr 24, 2024 08:54

Reviewed Apr 24, 2024 08:54

Erudus ID 8706b86278194d2a9ddcac35f214d9ff

Version 4.0



**Thomas Ridley QC Dept.**  
3:37 pm, 24 Apr 2024

The food information supplied by Thomas Ridley Foodservice has been provided by the respective product manufacturer. Whilst we use reasonable endeavours to check this information and ensure its accuracy, we do not give any warranty (whether express or implied), guarantee or representation that it is true, accurate or complete in any respect.

As product information, ingredients, nutritional guides and dietary or allergy advice may change from time to time, we recommend that you always carefully read the product label prior to using or consuming any such products. You should not solely rely upon the information we provide and make your own assessment as to the suitability or otherwise of any given product.



01482

# Quaker Porridge Oats Gluten Free Oats 510g x 5

Quaker Gluten Free Original Porridge Oats 5x510g

## PRODUCT DESCRIPTION

Gluten Free Oats

|                           |                                  |
|---------------------------|----------------------------------|
| Brand                     | Walkers Snacks Limited (PepsiCo) |
| Manufacturer Product Code | 300001830                        |
| Product Type              | Food                             |
| Product Category          | Grains                           |
| Storage Type              | Ambient                          |
| Erudus ID                 | 8706b86278194d2a9ddcac35f214d9ff |
| Specification Type        | Cereals                          |



|                      |                |
|----------------------|----------------|
| Inner Component GTIN | 00038527109111 |
| Outer Case GTIN      | 05000108636625 |



## INGREDIENTS

### Ingredient Declaration

Quaker Wholegrain Rolled Oats

## ALLERGENS

Product Contains:

|   |              |                                      |    |
|---|--------------|--------------------------------------|----|
| <b>Celery/Celeriac</b>                      | No           | <b>Mustard</b>                       | No |
| <b>Cereals Containing Gluten</b>            | Yes (<20ppm) | <b>Nuts (Tree)</b>                   | No |
| <b>Barley</b>                               | No           | <b>Almond nuts</b>                   | No |
| <b>Oats</b>                                 | Yes (<20ppm) | <b>Brazil nuts</b>                   | No |
| <b>Rye</b>                                  | No           | <b>Cashew nuts</b>                   | No |
| <b>Wheat (including Spelt and Khorasan)</b> | May Contain  | <b>Hazelnuts</b>                     | No |
| <b>Crustacea</b>                            | No           | <b>Macadamia (Queensland) nuts</b>   | No |
| <b>Eggs</b>                                 | No           | <b>Pecan nuts</b>                    | No |
| <b>Fish</b>                                 | No           | <b>Pistachio nuts</b>                | No |
| <b>Lupin</b>                                | No           | <b>Walnuts</b>                       | No |
| <b>Milk</b>                                 | No           | <b>Peanuts</b>                       | No |
| <b>Molluscs</b>                             | No           | <b>Sesame Seeds</b>                  | No |
|   |              | <b>Soybeans</b>                      | No |
|   |              | <b>Sulphur Dioxide and Sulphites</b> | No |

Risk Source:

### Allergen Statement On Pack

For allergens, see ingredients in bold.

### Additional Allergen Information

Meets the standard for gluten free but may not be suitable for those with wheat allergy.

FREE FROM CLAIMS

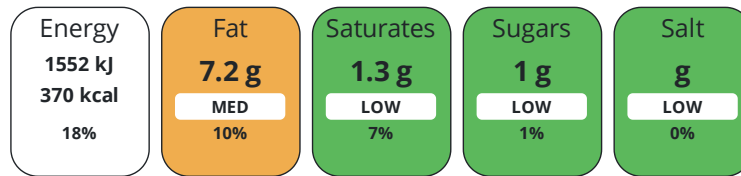
SUPPLEMENTARY INGREDIENT INFORMATION ADDITIVES

NUTRITIONAL INFORMATION

|                       |     |
|-----------------------|-----|
| <b>Gluten-Free</b>    | Yes |
| <b>GM Protein/DNA</b> | No  |

Product Contains:

Each 100g/ml portion contains:



of your reference intake.

Typical values per 100g/ml : Energy 370kcal / 1552kJ

| Nutrient                        | per 100g                          | RI per 100g | per 40g serving | RI per 40g serving | per 40g of prepared product |
|---------------------------------|-----------------------------------|-------------|-----------------|--------------------|-----------------------------|
| <b>Energy (kJ)</b>              | 1552 kJ                           | 18%         | 620.8 kJ        | 7%                 | 1073 kJ                     |
| <b>Energy (kcal)</b>            | 370 kcal                          | 19%         | 148 kcal        | 7%                 | 255 kcal                    |
| <b>Fat</b>                      | 7.2 g                             | 10%         | 2.9 g           | 4%                 | 6.8 g                       |
| <b>of which Saturates</b>       | 1.3 g                             | 7%          | 0.5 g           | 3%                 | 3.1 g                       |
| <b>Carbohydrate</b>             | 58 g                              | 22%         | 23.2 g          | 9%                 | 34 g                        |
| <b>of which Sugars</b>          | 1 g                               | 1%          | 0.4 g           | 0%                 | 11 g                        |
| <b>Fibre</b>                    | 9.3 g                             |             | 3.7 g           |                    | 3.7 g                       |
| <b>Protein</b>                  | 13 g                              | 26%         | 5.2 g           | 10%                | 13 g                        |
| <b>Salt</b>                     | 0 g                               | 0%          | -               |                    | 0.25 g                      |
| <b>Serving Size</b>             | 40 g                              |             |                 |                    |                             |
| <b>Serving Size Description</b> | This pack contains 12-13 servings |             |                 |                    |                             |
| <b>Number of Servings</b>       | 13 Servings                       |             |                 |                    |                             |

SUPPLEMENTARY NUTRITIONAL INFORMATION

HFSS (HIGH IN FAT, SALT AND SUGAR) HANDLING & STORAGE INFORMATION

|                    |    |
|--------------------|----|
| <b>HFSS Status</b> | No |
|--------------------|----|

**Directions For Use**

This pack contains 12-13 servings

**Storage Instructions**

Store in a cool dry place

|   |          |   |    |
|---|----------|---|----|
| <b>Shelf Life from Time of Production</b> | 546 Days | <b>Exempt From Shelf Life Labelling</b> | No |
|---|----------|---|----|

ORIGIN

|  |                |
|--|----------------|
| <b>Product Country of Origin/Place of Provenance</b> | United Kingdom |
|--|----------------|

PRODUCT CHARACTERISTICS

Standards Testing

CONFIGURATION

Case Configuration

Inner Pack Configuration

|   |         |
|---|---------|
| <b>Variable Inner Components in Outer Case</b>          | No      |
| <b>Total Quantity of Inner Components in Outer Case</b> | 5 Units |
| <b>Is the Outer Case Splittable?</b>                    | No      |

PRODUCT WEIGHTS

|                                      |         |
|--------------------------------------|---------|
| Inner Component                      |         |
| <b>Variable Weight Consumer Item</b> | No      |
| <b>Inner Component Weight</b>        | 510 g   |
| Outer Case                           |         |
| <b>Outer Case Gross Weight</b>       | 3.72 kg |
| <b>Outer Case Net Weight</b>         | 2.55 kg |

PRODUCT DIMENSIONS

|                               |        |
|-------------------------------|--------|
| Inner Component               |        |
| <b>Inner Component Depth</b>  | 106 mm |
| <b>Inner Component Width</b>  | 106 mm |
| <b>Inner Component Height</b> | 181 mm |
| Outer Case                    |        |
| <b>Outer Case Depth</b>       | 516 mm |
| <b>Outer Case Width</b>       | 108 mm |
| <b>Outer Case Height</b>      | 195 mm |

PALLET INFORMATION

|   |           |
|---|-----------|
| <b>Quantity of Cases Per Pallet Layer</b> | 19 Cases  |
| <b>Quantity of Layers Per Pallet</b>      | 7 Layers  |
| <b>Quantity of Cases Per Pallet</b>       | 133 Cases |

|                            |           |
|----------------------------|-----------|
| <b>Pallet Height</b>       | 1.37 MTR  |
| <b>Pallet Gross Weight</b> | 495.35 kg |

OTHER INFORMATION CONTACT INFORMATION

Address  
 Walkers Snacks Limited (PepsiCo)  
 450 South Oak Way  
 Green Park  
 Reading  
 RG2 6UW  
 United Kingdom

Commercial Contact

Jennifer Brown  
 eCommerce Content Manager  
 Jennifer.Brown@pepsico.com

P: (Phone) 07525766251

The information on the [Erudus System](#) has been supplied by the manufacturers of the products and, whilst the owners of the Erudus System take steps to ensure the information is regularly updated, they give no warranty and no guarantee that the information is accurate. Product information and ingredients may change, please always read product labels carefully in addition to using the information provided by Erudus.

We do not accept liability for any inaccuracies or incorrect information contained on this site. Please visit <http://www.erudus.com/terms-and-conditions> for full terms and conditions.