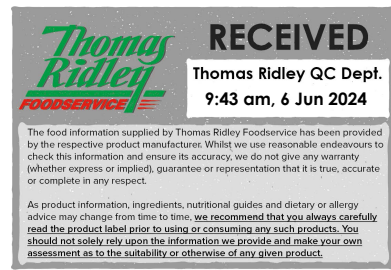


Changed Jun 05, 2024 13:57

Reviewed Jun 05, 2024 13:57

Erudus ID 397021accb8f4fa0a285b6c4e929b687

Version 3.0



Country Bake (Vegan) (60x50g) 1x3Kg

Country Vegetable Bake 1x3kg

PRODUCT DESCRIPTION

A colourful mix of carrots, green beans, onions, sweetcorn and a vegan cheese covered in a breadcrumb coating.

Brand	The UK Foodhall Ltd
Manufacturer Product Code	CH602
Product Type	Food
Product Category	Other Vegetarian & Vegan Alternatives
Storage Type	Frozen
Erudus ID	397021accb8f4fa0a285b6c4e929b687
Specification Type	Alternatives (Vegetarian and Vegan)
Outer Case GTIN	5060329040724



INGREDIENTS

Ingredient Declaration

Vegetables (Carrots, Green Beans, Onions, Sweetcorn), Breadcrumb Coating (**Wheat** Flour, Rapeseed Oil, Water, Salt, Yeast), Water, Dried Potato, Modified Potato Starch, Coconut Oil, **Soya** Protein, Salt, Yeast Extract, Onion Powder, White Pepper, Natural Flavouring, Calcium Phosphate, Colour: Algal Carotenes

ALLERGENS

Product Contains:

Celery/Celeriac	No	Mustard	No
Cereals Containing Gluten	Yes	Nuts (Tree)	No
Barley	No	Almond nuts	No
Oats	No	Brazil nuts	No
Rye	No	Cashew nuts	No
Wheat (including Spelt and Khorasan)	Yes	Hazelnuts	No
Crustacea	No	Macadamia (Queensland) nuts	No
Eggs	No	Pecan nuts	No
Fish	No	Pistachio nuts	No
Lupin	No	Walnuts	No
Milk	No	Peanuts	No
Molluscs	No	Sesame Seeds	No
		Soybeans	Yes
		Sulphur Dioxide and Sulphites	No

SUPPLEMENTARY INGREDIENT INFORMATION

Palm Oil	No
Hydrogenated Vegetable Oil/Fat	No
GM Protein/DNA	No

ADDITIVES

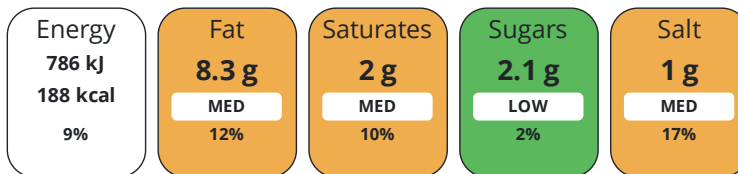
Product Contains:

Artificial Antioxidants	No	Artificial Flavourings	No
Artificial Colours	No	Artificial Preservatives	No
Artificial Flavour Enhancers	No	Artificial Sweeteners	No
Vegan Diet	Suitable for	Vegetarian Diet	Suitable for
Halal Diet	Suitable for	Kosher Diet	No

DIET SUITABILITY

NUTRITIONAL INFORMATION

Each 100g/ml portion contains:



of your reference intake.

Typical values per 100g/ml : Energy 188kcal / 786kJ

Nutrient	per 100g	RI per 100g
Energy (kJ)	786 kJ	9%
Energy (kcal)	188 kcal	9%
Fat	8.3 g	12%
of which Saturates	2 g	10%
Carbohydrate	22.5 g	9%
of which Sugars	2.1 g	2%
Fibre	2.4 g	
Protein	4.6 g	9%
Salt	1 g	17%
Sodium	412 mg	

SUPPLEMENTARY NUTRITIONAL INFORMATION

Trans Fats per 100 g/ml	0 g
Fat Percentage in Dry Matter per 100 g/ml	0 %

HANDLING & STORAGE INFORMATION

Directions For Use

Pre heat oven to 200C, gas mark 5. Place on a baking tray and cook for 13-15 minutes. Please ensure that the product reaches a core temperature of 80C before serving. These are only guidelines.

Storage Instructions

Keep frozen

Shelf Life from Time of Production	365 Days
---	----------

ACCREDITATIONS/ CERTIFICATIONS/ ASSURANCE SCHEMES

Roundtable of Sustainable Palm Oil (RSPO)	School Approved (The Requirement for School Food Regulation 2014)
BRCGS Certified	Other Accreditation

ORIGIN

Product Country of Origin/Place of Provenance	United Kingdom
--	----------------

Additional Origin Details

UK

PRODUCT CHARACTERISTICS

Standards Testing

CONFIGURATION	Case Configuration		Inner Pack Configuration					
	Total Quantity of Inner Components in	1 Units	Count per Inner Component		60			
	Outer Case							
PRODUCT WEIGHTS	Is the Outer Case Splittable?		No					
	Inner Component							
	Variable Weight Consumer Item	No						
	Inner Component Weight	3 kg						
	Outer Case							
	Outer Case Gross Weight	3.2 kg						
PRODUCT DIMENSIONS	Outer Case Net Weight		3 kg					
	Inner Component							
	Inner Component Depth	455 mm						
	Inner Component Width	195 mm						
	Inner Component Height	160 mm						
	Outer Case							
	Outer Case Depth	290 mm						
	Outer Case Width	195 mm						
	Outer Case Height	160 mm						
PALLET INFORMATION	Quantity of Cases Per Pallet Layer	20 Cases	Pallet Height		1.7 MTR			
	Quantity of Layers Per Pallet	9 Layers	Pallet Gross Weight		596 kg			
	Quantity of Cases Per Pallet	180 Cases						
	Inner Component Packaging							
PACKAGING	Type	Materials	Weight	Recycled Plastic %	Recyclable	Returnable	Composite	
	Bag	Plastic	10 g	- %				
	Outer Case Packaging							
	Type	Materials	Weight	Recycled Plastic %	Recyclable	Returnable	Composite	
	Case	Paper/Cardboard	190 g	- %				
	OTHER INFORMATION							
	Manufacturer Comments							
	min 1 pallet order							
	CONTACT INFORMATION	Address		Technical Contact				
		The UK Foodhall Ltd		Nicola Frankham				
2 Darwin Court		Technical Manager						
Oxon Business Park		technical@karenmcquade.com						
Shrewsbury								
Shropshire		<u>P: (Phone)</u> 0345-3011182						
SY3 5AL								
England								
<u>P: (Phone)</u> 0845 3011182								
Complaints Contact		Commercial Contact						
wemayhaveaproblem@karenmcquade.com		Shaun Mancrief						
		Commercial Director						
<u>P: (Phone)</u> 0345-3011182		supplychain@karenmcquade.com						
		<u>P: (Phone)</u> 03453011182						

The information on the [Erudus System](#) has been supplied by the manufacturers of the products and, whilst the owners of the Erudus System take steps to ensure the information is regularly updated, they give no warranty and no guarantee that the information is accurate. Product information and ingredients may change, please always read product labels carefully in addition to using the information provided by Erudus.

We do not accept liability for any inaccuracies or incorrect information contained on this site.
Please visit <http://www.erudus.com/terms-and-conditions> for full terms and conditions.