

Changed Apr 24, 2024 00:00

Reviewed Apr 23, 2024 11:31

Erudus ID 7932106331594a07bcae32e152f1ebd7

Version 2.0

01598

Feta (6 x 900g) "Yamas"

Yamas Greek Feta, 6x900g 6x900g

PRODUCT DESCRIPTION

PDO Greek Feta made from pasteurised Sheep & Goat's milk

Brand	Futura Foods UK Ltd
Manufacturer Product Code	15263
Effective Date	Apr 23, 2024
Product Type	Food
Product Category	Sheep & Goats Cheese
Storage Type	Chilled
Erudus ID	7932106331594a07bcae32e152f1ebd7
Specification Type	Cheese
Inner Component GTIN	5038961601511
Outer Case GTIN	05038961001137



INGREDIENTS

Ingredient Declaration

Feta Cheese contains Pasteurised Sheep & Goat's MILK

ALLERGENS

Product Contains:

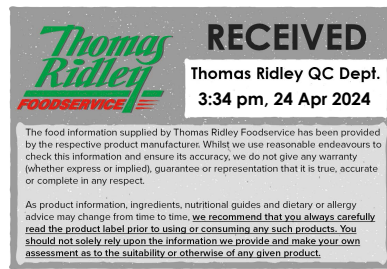
Celery/Celeriac	No	Mustard	No
Cereals Containing Gluten	No	Nuts (Tree)	No
Barley	No	Almond nuts	No
Oats	No	Brazil nuts	No
Rye	No	Cashew nuts	No
Wheat (including Spelt and Khorasan)	No	Hazelnuts	No
Crustacea	No	Macadamia (Queensland) nuts	No
Eggs	No	Pecan nuts	No
Fish	No	Pistachio nuts	No
Lupin	No	Walnuts	No
Milk	Yes	Peanuts	No
Molluscs	No	Sesame Seeds	No
		Soybeans	No
		Sulphur Dioxide and Sulphites	No

Additional Allergen Information

Contains MILK

SUPPLEMENTARY INGREDIENT INFORMATION

Palm Oil	No
Hydrogenated Vegetable Oil/Fat	No
GM Protein/DNA	No



ADDITIVES

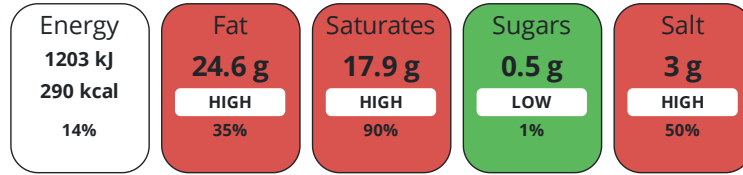
Product Contains:

Artificial Antioxidants	No	Artificial Flavourings	No
Artificial Colours	No	Artificial Preservatives	No
Artificial Flavour Enhancers	No	Artificial Sweeteners	No
Vegetarian Diet	Suitable for	Halal Diet	No
Kosher Diet	No		

DIET
SUITABILITY

NUTRITIONAL
INFORMATION

Each 100g/ml portion contains:



of your reference intake.

Typical values per 100g/ml : Energy 290kcal / 1203kj

Nutrient	per 100g	RI per 100g
Energy (kJ)	1203 kJ	14%
Energy (kcal)	290 kcal	15%
Fat	24.6 g	35%
of which Saturates	17.9 g	90%
Carbohydrate	1 g	0%
of which Sugars	0.5 g	1%
Protein	16.2 g	32%
Salt	3 g	50%

SUPPLEMENTARY
NUTRITIONAL
INFORMATION

HANDLING &
STORAGE
INFORMATION

Directions For Use

Once opened keep refrigerated & use within 3 days. Do not exceed the expiry date

Storage Instructions

Keep Refrigerated

Shelf Life from Time of Production	195 Days	Exempt From Shelf Life Labelling	No
---	----------	---	----

BRCGS Certified		Other Accreditation	
------------------------	--	----------------------------	--

ACCREDITATIONS/
CERTIFICATIONS/
ASSURANCE
SCHEMES
ORIGIN

Product Country of Origin/Place of Greece

Provenance

Additional Origin Details

Greece

Standards Testing

PRODUCT
CHARACTERISTICS

Do you undertake trend analysis of microbiological results?	No	Is shelf life testing undertaken?	No
--	----	--	----

Microbiological Standards

Organism	Description	Frequency	Target	Maximum	Sample (g or ml)
E. Coli (cfu/g or ml)		Monthly	<100	100	1

Organism	Description	Frequency	Target	Maximum	Sample (g or ml)
Enterobacteriaceae (cfu/g or ml)		Monthly	<10000	10000	1
Listeria SPP (cfu/g or ml)		Monthly	=0	0	25
Listeria Monocytogenes (cfu/g or ml)		Monthly	=0	0	25
Staphylococcus Aureus (cfu/g or ml)		Monthly	<100	100	1
Salmonella (cfu/g or ml)		Monthly	=0	0	25

CONFIGURATION

Case Configuration Inner Pack Configuration

Total Quantity of Inner Components in Outer Case 6 Units

Is the Outer Case Splittable? Yes

PRODUCT WEIGHTS

Inner Component

Variable Weight Consumer Item No

Inner Component Weight 900 g

Outer Case

Outer Case Gross Weight 5.52 kg

Outer Case Net Weight 5.4 kg

PRODUCT DIMENSIONS

Inner Component

Inner Component Depth 134 mm

Inner Component Width 145 mm

Inner Component Height 75 mm

Outer Case

Outer Case Depth 360 mm

Outer Case Width 265 mm

Outer Case Height 125 mm

PALLET INFORMATION

Quantity of Cases Per Pallet Layer 9 Cases **Pallet Height** 1.3 MTR

Quantity of Layers Per Pallet 12 Layers **Pallet Gross Weight** 660 kg

Quantity of Cases Per Pallet 108 Cases

PACKAGING

Inner Component Packaging

Type	Materials	Weight	Recycled Plastic %	Recyclable	Returnable	Composite
Film	Plastic	15 g	- %			

Outer Case Packaging

Type	Materials	Weight	Recycled Plastic %	Recyclable	Returnable	Composite
Case	Paper/Cardboard	200 g	- %			

OTHER INFORMATION

Identification/Health Marks GR4524EC

Manufacturer Comments

N/A

CONTACT
INFORMATION

Address

Futura Foods UK Ltd
The Priory
Long Street
Dursley
GL11 4HR
England

P: (Phone) 01666 890500

The information on the [Erudus System](#) has been supplied by the manufacturers of the products and, whilst the owners of the Erudus System take steps to ensure the information is regularly updated, they give no warranty and no guarantee that the information is accurate. Product information and ingredients may change, please always read product labels carefully in addition to using the information provided by Erudus.

We do not accept liability for any inaccuracies or incorrect information contained on this site.
Please visit <http://www.erudus.com/terms-and-conditions> for full terms and conditions.