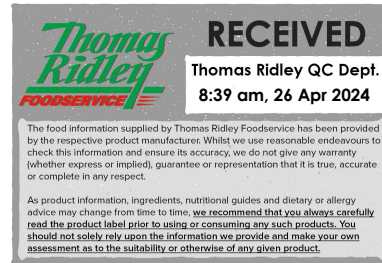


Changed Apr 26, 2024 00:00

Reviewed Apr 25, 2024 12:01

Erudus ID 7e9d047861364f14900eeca7266d4196

Version 2.0



**Thomas Ridley**  
FOODSERVICE

**RECEIVED**  
Thomas Ridley QC Dept.  
8:39 am, 26 Apr 2024

The food information supplied by Thomas Ridley Foodservice has been provided by the respective product manufacturer. Whilst we use reasonable endeavours to check this information and ensure its accuracy, we do not give any warranty (whether express or implied), guarantee or representation that it is true, accurate or complete in any respect.

As product information, ingredients, nutritional guides and dietary or allergy advice may change from time to time, we recommend that you always carefully read the product label prior to using or consuming any such products. You should not solely rely upon the information we provide and make your own assessment as to the suitability or otherwise of any given product.



01599

# YAMAS! Halloumi 10x250g

Halloumi 10x250g

## PRODUCT DESCRIPTION

Halloumi Cheese made in Cyprus from a blend of Pasteurised Cow, Goats & Sheep's milk

<b>Brand</b>	Futura Foods UK Ltd
<b>Manufacturer Product Code</b>	15270
<b>Effective Date</b>	Apr 25, 2024
<b>Product Type</b>	Food
<b>Product Category</b>	Sheep & Goats Cheese
<b>Storage Type</b>	Chilled
<b>Erudus ID</b>	7e9d047861364f14900eeca7266d4196
<b>Specification Type</b>	Cheese



<b>Inner Component GTIN</b>	5038961001106
<b>Outer Case GTIN</b>	05038961001304



## INGREDIENTS

### Ingredient Declaration

Halloumi Cheese (MILK), Mint.

## ALLERGENS

Product Contains:

<b>Celery/Celeriac</b>	No
<b>Cereals Containing Gluten</b>	No
<b>Barley</b>	No
<b>Oats</b>	No
<b>Rye</b>	No
<b>Wheat (including Spelt and Khorasan)</b>	No
<b>Crustacea</b>	No
<b>Eggs</b>	No
<b>Fish</b>	No
<b>Lupin</b>	No
<b>Milk</b>	Yes
<b>Molluscs</b>	No
<b>Mustard</b>	No
<b>Nuts (Tree)</b>	No
<b>Almond nuts</b>	No
<b>Brazil nuts</b>	No
<b>Cashew nuts</b>	No
<b>Hazelnuts</b>	No
<b>Macadamia (Queensland) nuts</b>	No
<b>Pecan nuts</b>	No
<b>Pistachio nuts</b>	No
<b>Walnuts</b>	No
<b>Peanuts</b>	No
<b>Sesame Seeds</b>	No
<b>Soybeans</b>	No
<b>Sulphur Dioxide and Sulphites</b>	No

**Additional Allergen Information**

Contains MILK

SUPPLEMENTARY INGREDIENT INFORMATION

<b>Palm Oil</b>	No
<b>Hydrogenated Vegetable Oil/Fat</b>	No
<b>GM Protein/DNA</b>	No

ADDITIVES

Product Contains:

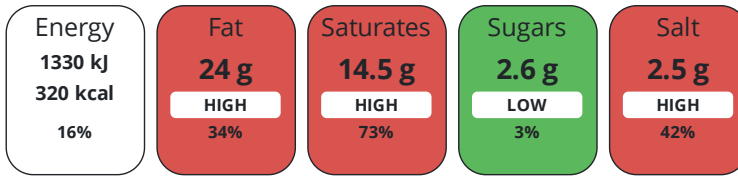
<b>Artificial Antioxidants</b>	No
<b>Artificial Colours</b>	No
<b>Artificial Flavour Enhancers</b>	No
<b>Artificial Flavourings</b>	No
<b>Artificial Preservatives</b>	No
<b>Artificial Sweeteners</b>	No

DIET SUITABILITY

<b>Vegetarian Diet</b>	Suitable for	<b>Halal Diet</b>	No
<b>Kosher Diet</b>	No		

NUTRITIONAL INFORMATION

Each 100g/ml portion contains:



of your reference intake.

Typical values per 100g/ml : Energy 320kcal / 1330kJ

Nutrient	per 100g	RI per 100g
Energy (kJ)	1330 kJ	16%
Energy (kcal)	320 kcal	16%
Fat	24 g	34%
of which Saturates	14.5 g	73%
Carbohydrate	2.6 g	1%
of which Sugars	2.6 g	3%
Protein	23 g	46%
Salt	2.5 g	42%

SUPPLEMENTARY NUTRITIONAL INFORMATION

HANDLING & STORAGE INFORMATION

Directions For Use

Once opened keep refrigerated & use within 3 days. Do not exceed the expiry date

Storage Instructions

Keep Refrigerated

Shelf Life from Time of Production

365 Days

Exempt From Shelf Life Labelling

No

ACCREDITATIONS/ CERTIFICATIONS/ ASSURANCE SCHEMES

BRCGS Certified

ORIGIN

Product Country of Origin/Place of

Other

Provenance

Additional Origin Details

Cyprus. Dual supply product.

PRODUCT CHARACTERISTICS

Standards Testing

Do you undertake trend analysis of microbiological results?

No

Is shelf life testing undertaken?

No

Microbiological Standards

Organism	Description	Frequency	Target	Maximum	Sample (g or ml)
Coliforms (cfu/g or ml)		Daily	<10	1000	1
E. Coli (cfu/g or ml)		Daily	<10	1000	1
Enterobacteriaceae (cfu/g or ml)		Daily	<10	1000	1
Listeria SPP (cfu/g or ml)	Absent in 25g	Monthly	=0	0	25
Listeria Monocytogenes (cfu/g or ml)	Absent in 25g	Monthly	=0	0	25
Staphylococcus Aureus (cfu/g or ml)		Daily	<10	1000	1

Organism	Description	Frequency	Target	Maximum	Sample (g or ml)
Salmonella (cfu/g or ml)	Absent in 25g	Monthly	=0	0	25

CONFIGURATION

Case Configuration

<b>Total Quantity of Inner Components in Outer Case</b>	10 Units
---	----------

<b>Is the Outer Case Splittable?</b>	Yes
--------------------------------------	-----

Inner Pack Configuration

PRODUCT WEIGHTS

Inner Component

<b>Variable Weight Consumer Item</b>	No
--------------------------------------	----

<b>Inner Component Weight</b>	250 g
-------------------------------	-------

<b>e mark</b>	Yes
---------------	-----

Outer Case

<b>Outer Case Gross Weight</b>	2.7 kg
--------------------------------	--------

<b>Outer Case Net Weight</b>	2.5 kg
------------------------------	--------

PRODUCT DIMENSIONS

Inner Component

<b>Inner Component Depth</b>	130 mm
------------------------------	--------

<b>Inner Component Width</b>	96 mm
------------------------------	-------

<b>Inner Component Height</b>	45 mm
-------------------------------	-------

Outer Case

<b>Outer Case Depth</b>	223 mm
-------------------------	--------

<b>Outer Case Width</b>	158 mm
-------------------------	--------

<b>Outer Case Height</b>	114 mm
--------------------------	--------

PALLET INFORMATION

<b>Quantity of Cases Per Pallet Layer</b>	25 Cases
---	----------

<b>Quantity of Layers Per Pallet</b>	12 Layers
--------------------------------------	-----------

<b>Quantity of Cases Per Pallet</b>	300 Cases
-------------------------------------	-----------

<b>Pallet Height</b>	1.6 MTR
----------------------	---------

<b>Pallet Gross Weight</b>	830 kg
----------------------------	--------

PACKAGING

Inner Component Packaging

Type	Materials	Weight	Recycled Plastic %	Recyclable	Returnable	Composite
Film	Plastic	5 g	- %			

Outer Case Packaging

Type	Materials	Weight	Recycled Plastic %	Recyclable	Returnable	Composite
Case	Paper/Cardboard	110 g	- %			

OTHER INFORMATION

Manufacturer Comments

N/A

CONTACT INFORMATION

Address

Futura Foods UK Ltd

The Priory

Long Street

Dursley

GL11 4HR

England

P: (Phone) 01666 890500

The information on the [Erudus System](#) has been supplied by the manufacturers of the products and, whilst the owners of the Erudus System take steps to ensure the information is regularly updated, they give no warranty and no guarantee that the information is accurate. Product information and ingredients may change, please always read product labels carefully in addition to using the information provided by Erudus.

We do not accept liability for any inaccuracies or incorrect information contained on this site.

Please visit <http://www.erudus.com/terms-and-conditions> for full terms and conditions.