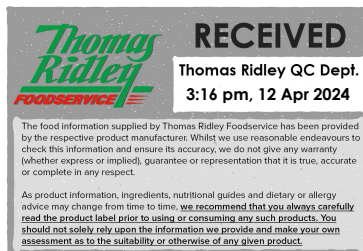


Changed Apr 11, 2024 13:57

Reviewed Apr 11, 2024 13:57

Erudus ID e8bfe0d25deb46c59ee86d4b163601f9

Version 3.0



01602

# Large Pink & White (Princess) Mallows 4x500g

Large Pink & White (princess) Mallows 4x500g

## PRODUCT DESCRIPTION

A MIX OF PINK AND WHITE MARSHMALLOWS

Brand	Orchard Valley Foods Ltd
Manufacturer Product Code	NPWMM13
Product Type	Food
Product Category	Confectionery
Storage Type	Ambient
Erudus ID	e8bfe0d25deb46c59ee86d4b163601f9
Specification Type	Generic
Outer Case GTIN	05010412882496

## INGREDIENTS

### Ingredient Declaration

Glucose Syrup, Sugar, Water, Maize Starch, Beef Gelatine, Flavourings, Beetroot Juice Concentrate

## ALLERGENS

Product Contains:

<b>Celery/Celeriac</b>	No	<b>Mustard</b>	No
<b>Cereals Containing Gluten</b>	No	<b>Nuts (Tree)</b>	No
<b>Barley</b>	No	<b>Almond nuts</b>	No
<b>Oats</b>	No	<b>Brazil nuts</b>	No
<b>Rye</b>	No	<b>Cashew nuts</b>	No
<b>Wheat (including Spelt and Khorasan)</b>	No	<b>Hazelnuts</b>	No
<b>Crustacea</b>	No	<b>Macadamia (Queensland) nuts</b>	No
<b>Eggs</b>	No	<b>Pecan nuts</b>	No
<b>Fish</b>	No	<b>Pistachio nuts</b>	No
<b>Lupin</b>	No	<b>Walnuts</b>	No
<b>Milk</b>	No	<b>Peanuts</b>	No
<b>Molluscs</b>	No	<b>Sesame Seeds</b>	No
		<b>Soybeans</b>	No
		<b>Sulphur Dioxide and Sulphites</b>	No

### Additional Allergen Information

Gluten <20ppm and sulphites <10ppm

## SUPPLEMENTARY INGREDIENT INFORMATION

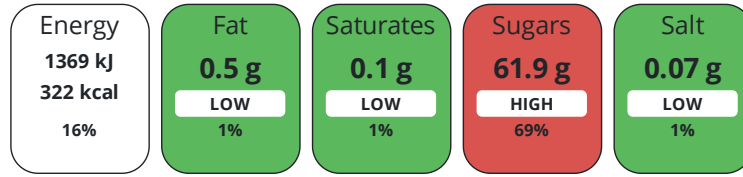
<b>Palm Oil</b>	No
<b>Hydrogenated Vegetable Oil/Fat</b>	No
<b>GM Protein/DNA</b>	No

## ADDITIVES

Product Contains:

<b>Artificial Antioxidants</b>	No	<b>Artificial Flavourings</b>	No
<b>Artificial Colours</b>	No	<b>Artificial Preservatives</b>	No
<b>Artificial Flavour Enhancers</b>	No	<b>Artificial Sweeteners</b>	No
<b>Vegan Diet</b>	No	<b>Vegetarian Diet</b>	No
<b>Halal Diet</b>	No	<b>Kosher Diet</b>	No

Each 100g/ml portion contains:



of your reference intake.

Typical values per 100g/ml : Energy 322kcal / 1369kJ

Nutrient	per 100g	RI per 100g	per 100g serving	RI per 100g serving
Energy (kJ)	1369 kJ	16%	1369 kJ	16%
Energy (kcal)	322 kcal	16%	322 kcal	16%
Fat	< 0.5 g	1%	0.5 g	1%
of which Saturates	< 0.1 g	1%	0.1 g	1%
Carbohydrate	77.6 g	30%	77.6 g	30%
of which Sugars	61.9 g	69%	61.9 g	69%
Fibre	< 0.5 g		0.5 g	
Protein	2.9 g	6%	2.9 g	6%
Salt	0.07 g	1%	0.1 g	2%
Serving Size	100 g			

SUPPLEMENTARY  
NUTRITIONAL  
INFORMATION

HFSS (HIGH IN  
FAT, SALT AND  
SUGAR)  
HANDLING &  
STORAGE  
INFORMATION

HFSS Status	Yes		
Directions For Use	Ready to eat		
Storage Instructions	STORE IN A COOL DRY PLACE AWAY FROM DIRECT SUNLIGHT		
Shelf Life from Time of Production	270 Days	Exempt From Shelf Life Labelling	No

ACCREDITATIONS/  
CERTIFICATIONS/  
ASSURANCE  
SCHEMES  
ORIGIN

BRCGS Certified			
Product Country of Origin/Place of Provenance	United Kingdom		

PRODUCT  
CHARACTERISTICS

Additional Origin Details	Packed in the UK.		
Standards Testing			
Do you undertake trend analysis of microbiological results?	Yes	Is shelf life testing undertaken?	Yes

Organism	Description	Frequency	Target	Maximum	Sample (g or ml)
Coliforms (cfu/g or ml)		Annually	<10	10	1
Salmonella (cfu/g or ml)		Annually	<0	0	25
Yeast (cfu/g or ml)		Annually	<100	100	1

	Organism	Description	Frequency	Target	Maximum	Sample (g or ml)	
	Moulds (cfu/g or ml)		Annually	<100	250	1	
CONFIGURATION	Case Configuration			Inner Pack Configuration			
	<b>Total Quantity of Inner Components in Outer Case</b>	4 Units					
	<b>Is the Outer Case Splittable?</b>	No					
PRODUCT WEIGHTS	Inner Component						
	<b>Variable Weight Consumer Item</b>	Yes					
	Outer Case						
	<b>Outer Case Gross Weight</b>	2.2 kg					
	<b>Outer Case Net Weight</b>	2 kg					
PRODUCT DIMENSIONS	Inner Component						
	<b>Inner Component Depth</b>	50 mm					
	<b>Inner Component Width</b>	250 mm					
	<b>Inner Component Height</b>	230 mm					
	Outer Case						
	<b>Outer Case Depth</b>	287 mm					
	<b>Outer Case Width</b>	192 mm					
	<b>Outer Case Height</b>	151 mm					
PALLET INFORMATION	<b>Quantity of Cases Per Pallet Layer</b>	20 Cases		<b>Pallet Height</b>		1.53 MTR	
	<b>Quantity of Layers Per Pallet</b>	9 Layers					
	<b>Quantity of Cases Per Pallet</b>	180 Cases					
PACKAGING	Inner Component Packaging						
	<b>Type</b>	<b>Materials</b>	<b>Weight</b>	<b>Recycled Plastic %</b>	<b>Recyclable</b>	<b>Returnable</b>	<b>Composite</b>
	Sachet	Plastic	200 g	- %			
	Outer Case Packaging						
	<b>Type</b>	<b>Materials</b>	<b>Weight</b>	<b>Recycled Plastic %</b>	<b>Recyclable</b>	<b>Returnable</b>	<b>Composite</b>
	Bag	Paper/Cardboard	500 g	- %			
OTHER INFORMATION CONTACT INFORMATION	Address			Technical Contact			
	Orchard Valley Foods Ltd			Technical			
	4 Lower Teme Business Park			Technical Team			
	Burford			qa@orchard-valley.co.uk			
	Tenbury Wells						
	Worcestershire						
	WR15 8SZ						
	England						
	P. (Phone) 01584 811137						

The information on the [Erudus System](#) has been supplied by the manufacturers of the products and, whilst the owners of the Erudus System take steps to ensure the information is regularly updated, they give no warranty and no guarantee that the information is accurate. Product information and ingredients may change, please always read product labels carefully in addition to using the information provided by Erudus.

We do not accept liability for any inaccuracies or incorrect information contained on this site.  
Please visit <http://www.erudus.com/terms-and-conditions> for full terms and conditions.