

Changed Mar 05, 2024 16:20

Reviewed Mar 05, 2024 16:20

Erudus ID 940fcf3fff6c41c68fd4479402b50422

Version 2.0

Thomas Ridley QC Dept.  
8:46 am, 6 Mar 2024

The food information supplied by Thomas Ridley Foodservice has been provided by the respective product manufacturer. Whilst we use reasonable endeavours to check this information and ensure its accuracy, we do not give any warranty (whether express or implied), guarantee or representation that it is true, accurate or complete in any respect.

As product information, ingredients, nutritional guides and dietary or allergy advice may change from time to time, we recommend that you always carefully read the product label prior to using or consuming any such products. You should not solely rely upon the information we provide and make your own assessment as to the suitability or otherwise of any given product.



01647

# Mushroom Stock Mix 700g

Mushroom Stock Mix 2x700g

## PRODUCT DESCRIPTION

A composite material produced by the dry blending of food ingredients. A fine, dull yellowish-beige coloured free-flowing powder, with a distinctive odour of mushrooms. It has the characteristic appearance and flavour of Mushroom Stock when reconstituted with water.

Brand	Essential Cuisine Limited
Manufacturer Product Code	ECMS/4 - SW00002
Manufacturer Version	1
Number	
Effective Date	Sep 27, 2022
Product Type	Food
Product Category	Gravy / Bouillon
Storage Type	Ambient
Erudus ID	940fcf3fff6c41c68fd4479402b50422
Specification Type	Generic



Inner Component GTIN	5029540000115
Outer Case GTIN	05029540000702



## INGREDIENTS

### Ingredient Declaration

Ingredients when reconstituted:

Mushroom Stock (Water, Mushroom Extract), Salt, Maltodextrin, Yeast Extract, Glucose Syrup, Flavourings, Sunflower Oil.

## ALLERGENS

Product Contains:

<b>Celery/Celeriac</b>	No	<b>Mustard</b>	No
<b>Cereals Containing Gluten</b>	No	<b>Nuts (Tree)</b>	No
<b>Barley</b>	No	<b>Almond nuts</b>	No
<b>Oats</b>	No	<b>Brazil nuts</b>	No
<b>Rye</b>	No	<b>Cashew nuts</b>	No
<b>Wheat (including Spelt and Khorasan)</b>	No	<b>Hazelnuts</b>	No
<b>Crustacea</b>	No	<b>Macadamia (Queensland) nuts</b>	No
<b>Eggs</b>	No	<b>Pecan nuts</b>	No
<b>Fish</b>	No	<b>Pistachio nuts</b>	No
<b>Lupin</b>	No	<b>Walnuts</b>	No
<b>Milk</b>	No	<b>Peanuts</b>	No
<b>Molluscs</b>	No	<b>Sesame Seeds</b>	No
		<b>Soybeans</b>	No
		<b>Sulphur Dioxide and Sulphites</b>	No

### Additional Allergen Information

N/A

SUPPLEMENTARY  
INGREDIENT  
INFORMATION

<b>Palm Oil</b>	No
<b>Hydrogenated Vegetable Oil/Fat</b>	No
<b>GM Protein/DNA</b>	No

ADDITIVES

Product Contains:

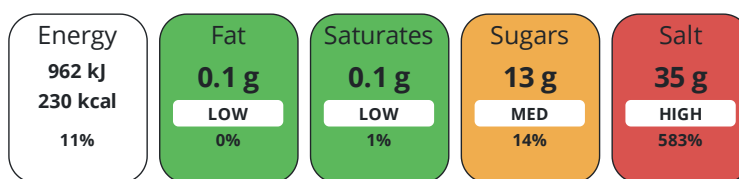
<b>Artificial Antioxidants</b>	No	<b>Artificial Flavourings</b>	Yes
<b>Artificial Colours</b>	No	<b>Artificial Preservatives</b>	No
<b>Artificial Flavour Enhancers</b>	No	<b>Artificial Sweeteners</b>	No

DIET  
SUITABILITY

<b>Vegan Diet</b>	Suitable for	<b>Vegetarian Diet</b>	Suitable for
<b>Halal Diet</b>	No	<b>Kosher Diet</b>	No

NUTRITIONAL  
INFORMATION

Each 100g/ml portion contains:



of your reference intake.

Typical values per 100g/ml : Energy 230kcal / 962kJ

Nutrient	per 100g	RI per 100g
<b>Energy (kJ)</b>	962 kJ	11%
<b>Energy (kcal)</b>	230 kcal	12%
<b>Fat</b>	0.1 g	0%
<b>of which Saturates</b>	0.1 g	1%
<b>Carbohydrate</b>	47.8 g	18%
<b>of which Sugars</b>	13 g	14%
<b>Fibre</b>	0.3 g	
<b>Protein</b>	9.4 g	19%
<b>Salt</b>	35 g	583%

SUPPLEMENTARY  
NUTRITIONAL  
INFORMATION

HFSS (HIGH IN  
FAT, SALT AND  
SUGAR)

**HFSS Status** Not Applicable (out of scope, exempt)

HANDLING &  
STORAGE  
INFORMATION

**Directions For Use**

To make stock, simply add the required amount of stock mix (12 - 20g) into 1 litre (1.75 pints) of boiling water and stir until dissolved.

**Storage Instructions**

Always reseal after use and keep in a cool, dry place.

**Shelf Life from Time of Production** 547 Days

**Exempt From Shelf Life Labelling** No

ACCREDITATIONS/  
CERTIFICATIONS/  
ASSURANCE  
SCHEMES



**Other Accreditation**

None

ORIGIN	<b>Product Country of Origin/Place of Provenance</b>	United Kingdom						
PRODUCT CHARACTERISTICS CONFIGURATION	<b>Additional Origin Details</b>	N/A						
	Standards Testing							
	Case Configuration	Inner Pack Configuration						
	<b>Total Quantity of Inner Components in Outer Case</b>	2 Units						
PRODUCT WEIGHTS	<b>Is the Outer Case Splittable?</b>	Yes						
	Inner Component							
	<b>Variable Weight Consumer Item</b>	No						
	<b>Inner Component Weight</b>	700 g						
	Outer Case							
	<b>Outer Case Gross Weight</b>	1.6 kg						
PRODUCT DIMENSIONS	<b>Outer Case Net Weight</b>	1.4 kg						
	Inner Component							
	<b>Inner Component Depth</b>	132 mm						
	<b>Inner Component Width</b>	132 mm						
	<b>Inner Component Height</b>	132 mm						
	Outer Case							
	<b>Outer Case Depth</b>	265 mm						
	<b>Outer Case Width</b>	132 mm						
PALLET INFORMATION	<b>Outer Case Height</b>	135 mm						
	<b>Quantity of Cases Per Pallet Layer</b>	35 Cases	<b>Pallet Height</b>	1.3 MTR				
	<b>Quantity of Layers Per Pallet</b>	8 Layers	<b>Pallet Gross Weight</b>	482 kg				
	<b>Quantity of Cases Per Pallet</b>	280 Cases						
PACKAGING	Inner Component Packaging							
	<b>Type</b>	<b>Materials</b>	<b>Weight</b>	<b>Recycled Plastic %</b>	<b>Recyclable</b>	<b>Returnable</b>	<b>Composite</b>	
	Tub	Plastic	66 g	- %				
	Outer Case Packaging							
	<b>Type</b>	<b>Materials</b>	<b>Weight</b>	<b>Recycled Plastic %</b>	<b>Recyclable</b>	<b>Returnable</b>	<b>Composite</b>	
	Paper/Polyethylene	Plastic	10 g	- %				
	Paper/Polyethylene	Paper/Cardboard	1 g	- %				
	Transport Packaging							
	<b>Type</b>	<b>Materials</b>	<b>Weight</b>	<b>Recycled Plastic %</b>	<b>Recyclable</b>	<b>Returnable</b>	<b>Composite</b>	
	Other	Plastic	500 g	- %				
	Other	Paper/Cardboard	5000 g	- %				
	Other	Wood	30000 g	- %				
	OTHER INFORMATION	<b>Intrastat/Taric Code</b>	2103					
		<b>Manufacturer Comments</b>	N/A					

CONTACT  
INFORMATION

Address

Essential Cuisine Limited  
Essential Cuisine Ltd  
Browning Way  
Winsford  
Cheshire  
CW7 2RH  
United Kingdom

P. (Phone) 01606 541490

The information on the [Erudus System](#) has been supplied by the manufacturers of the products and, whilst the owners of the Erudus System take steps to ensure the information is regularly updated, they give no warranty and no guarantee that the information is accurate. Product information and ingredients may change, please always read product labels carefully in addition to using the information provided by Erudus.

We do not accept liability for any inaccuracies or incorrect information contained on this site.  
Please visit <http://www.erudus.com/terms-and-conditions> for full terms and conditions.