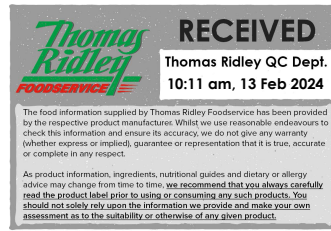


Changed Feb 12, 2024 18:17

Reviewed Feb 12, 2024 18:17

Erudus ID 4b0c9391c9b44eab86e90c86c45ea7e3

Version 2.0



# JUICEBURST™ 330ml RASPBERRY LEMONADE

Raspberry, Lemon, Grape And Orange Juice Drink With Sweetener 12x

## PRODUCT DESCRIPTION

Premium Raspberry & Lemon Juice Drink with Sweetener

Brand	Purity Soft Drinks Ltd
Manufacturer Product Code	NASPINKLEM330ML
Product Type	Drink
Product Category	Juices and Cordials
Storage Type	Ambient
Erudus ID	4b0c9391c9b44eab86e90c86c45ea7e3
Specification Type	Drinks
Inner Component GTIN	5038512003078
Outer Case GTIN	05038512003085



## INGREDIENTS

### Ingredient Declaration

Water, Fruit Juices from Concentrate (45%): White Grape, Lemon (3.5%), Orange, Raspberry (0.1%). Natural Flavouring, Acid: Malic Acid. Concentrated Lemon Extract, Antioxidant: Ascorbic Acid. Elderberry Concentrate, Black Carrot Concentrate, Stabiliser: Carob Bean Gum. Colour: Anthocyanins. Sweetener: Steviol Glycosides.

## ALLERGENS

Product Contains:

Celery/Celeriac	No	Mustard	No
Cereals Containing Gluten	No	Nuts (Tree)	No
Barley	No	Almond nuts	No
Oats	No	Brazil nuts	No
Rye	No	Cashew nuts	No
Wheat (including Spelt and Khorasan)	No	Hazelnuts	No
Crustacea	No	Macadamia (Queensland) nuts	No
Eggs	No	Pecan nuts	No
Fish	No	Pistachio nuts	No
Lupin	No	Walnuts	No
Milk	No	Peanuts	No
Molluscs	No	Sesame Seeds	No
		Soybeans	No
		Sulphur Dioxide and Sulphites	No

## SUPPLEMENTARY INGREDIENT INFORMATION

Palm Oil	No
Hydrogenated Vegetable Oil/Fat	No
GM Protein/DNA	No

ADDITIVES

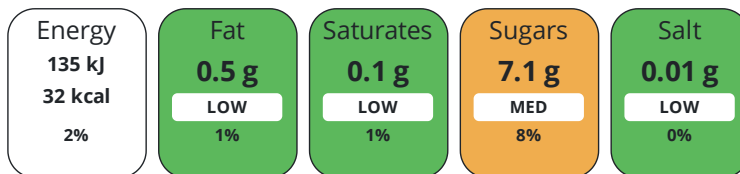
Product Contains:

<b>Artificial Antioxidants</b>	Yes	<b>Artificial Flavourings</b>	No
<b>Artificial Colours</b>	No	<b>Artificial Preservatives</b>	No
<b>Artificial Flavour Enhancers</b>	No	<b>Artificial Sweeteners</b>	No
<b>Vegan Diet</b>	Suitable for	<b>Vegetarian Diet</b>	Suitable for
<b>Halal Diet</b>	No	<b>Kosher Diet</b>	No

DIET  
SUITABILITY

NUTRITIONAL  
INFORMATION

Each 100g/ml portion contains:



of your reference intake.

Typical values per 100g/ml : Energy 32kcal / 135kj

Nutrient	per 100ml	RI per 100ml
<b>Energy (kJ)</b>	135 kJ	2%
<b>Energy (kcal)</b>	32 kcal	2%
<b>Fat</b>	< 0.5 g	1%
<b>of which Saturates</b>	< 0.1 g	1%
<b>Carbohydrate</b>	7.1 g	3%
<b>of which Sugars</b>	7.1 g	8%
<b>Fibre</b>	< 0.5 g	
<b>Protein</b>	< 0.5 g	1%
<b>Salt</b>	< 0.01 g	0%

SUPPLEMENTARY  
NUTRITIONAL  
INFORMATION

HANDLING &  
STORAGE  
INFORMATION

**Directions For Use**

Oral consumption

**Storage Instructions**

Store in cool dry conditions away from strong light sources. Best served chilled and shake well before use. Once opened keep in the fridge and consume within 3 days.

<b>Shelf Life from Time of Production</b>	210 Days	<b>Exempt From Shelf Life Labelling</b>	No
---	----------	---	----

ACCREDITATIONS/  
CERTIFICATIONS/  
ASSURANCE  
SCHEMES



**Other Accreditation**

None

ORIGIN

**Product Country of Origin/Place of** Not Specified

**Provenance**

**Additional Origin Details**

Bottled in UK. Compulsory or voluntary country of original labelling not present.

PRODUCT  
CHARACTERISTICS

Standards Testing

<b>Do you undertake trend analysis of microbiological results?</b>	Yes	<b>Is shelf life testing undertaken?</b>	Yes
--	-----	--	-----

Microbiological Standards

Organism	Description	Frequency	Target	Maximum	Sample (g or ml)
Total Viable Count (TVC) (cfu/g or ml)		Every Batch	<1	0	5
Yeast (cfu/g or ml)		Every Batch	<1	0	5
Moulds (cfu/g or ml)		Every Batch	<1	0	5

Analytical Standards

Test	Description	Frequency	Target	Range	Sample (g or ml)
Acidity (%)		Every Batch	=0.46	0.41 to 0.51	10
Brix °Bx		Every Batch	=7.3	7.1 to 7.5	1
pH		Every Batch	<4	0 to 4	330

CONFIGURATION

Case Configuration

Inner Pack Configuration

**Total Quantity of Inner Components in Outer Case** 12 Units

**Outer Case**

**Is the Outer Case Splittable?** Yes

PRODUCT WEIGHTS

Inner Component

Outer Case

**Outer Case Gross Weight** 4.5 kg

**Outer Case Net Weight** 4.05 kg

PRODUCT DIMENSIONS

Inner Component

**Inner Component Depth** 172 mm

**Inner Component Width** 57 mm

**Inner Component Height** 57 mm

Outer Case

**Outer Case Depth** 228 mm

**Outer Case Width** 171 mm

**Outer Case Height** 173 mm

PALLET INFORMATION

**Quantity of Cases Per Pallet Layer** 31 Cases

**Pallet Height** 1.2 MTR

**Quantity of Layers Per Pallet** 6 Layers

**Pallet Gross Weight** 872 kg

**Quantity of Cases Per Pallet** 186 Cases

PACKAGING

Inner Component Packaging

Type	Materials	Weight	Recycled Plastic %	Recyclable	Returnable	Composite
Bottle	Plastic	19.8 g	- %			

Outer Case Packaging

Type	Materials	Weight	Recycled Plastic %	Recyclable	Returnable	Composite
Case	Plastic	18 g	- %			
Case	Paper/Cardboard	1 g	- %			

Transport Packaging

Type	Materials	Weight	Recycled Plastic %	Recyclable	Returnable	Composite
Other	Plastic	500 g	- %			
Other	Paper/Cardboard	1000 g	- %			
Other	Wood	35000 g	- %			

OTHER INFORMATION

**Manufacturer Comments**

It provides 1 of your 5 daily portions of fruit and vegetables. No added sugar (Contains naturally occurring sugars from fruit juice)  
No artificial colours, flavours, sweeteners or preservatives Made in UK Compliant with the Requirements for School Food Regulations 2014

CONTACT INFORMATION

Address

Purity Soft Drinks Ltd  
Douglas House  
Mounts Road  
Wednesbury  
West Midlands  
WS10 0BU  
England

P: (Phone) 01215057585

The information on the [Erudus System](#) has been supplied by the manufacturers of the products and, whilst the owners of the Erudus System take steps to ensure the information is regularly updated, they give no warranty and no guarantee that the information is accurate. Product information and ingredients may change, please always read product labels carefully in addition to using the information provided by Erudus.

We do not accept liability for any inaccuracies or incorrect information contained on this site.  
Please visit <http://www.erudus.com/terms-and-conditions> for full terms and conditions.