

Changed Apr 06, 2021 09:39

Erudus ID 0ebde2a44ac44d079d72a3a46888c988

Version 1.0

01714

# 6 PUFF PASTRY SHEETS 2000g

Puff Pastry 6x

## PRODUCT DESCRIPTION

Raw frozen, Charentes Poitou AOP butter puff pastry sheets 2000g

Brand	Bridor
Manufacturer Product Code	30081
Product Type	Food
Product Category	Pastry
Storage Type	Frozen
Erudus ID	0ebde2a44ac44d079d72a3a46888c988
Specification Type	Legacy

Outer Case GTIN 3419280007024



## INGREDIENTS

### Ingredient Declaration

**WHEAT** flour, Charentes-Poitou **PDO** butter (**MILK**) 35%, water, salt, **WHEAT** gluten.

## ALLERGENS

Product Contains:

<b>Celery/Celeriac</b>	No	<b>Mustard</b>	No
<b>Cereals Containing Gluten</b>	Yes	<b>Nuts (Tree)</b>	May Contain
<b>Barley</b>	No	<b>Almond nuts</b>	May Contain
<b>Oats</b>	No	<b>Brazil nuts</b>	No
<b>Rye</b>	No	<b>Cashew nuts</b>	No
<b>Wheat (including Spelt and Khorasan)</b>	Yes	<b>Hazelnuts</b>	May Contain
<b>Gluten content &lt;20ppm</b>	No	<b>Macadamia (Queensland) nuts</b>	No
<b>Crustacea</b>	No	<b>Pecan nuts</b>	No
<b>Eggs</b>	May Contain	<b>Pistachio nuts</b>	No
<b>Fish</b>	No	<b>Walnuts</b>	May Contain
<b>Lupin</b>	No	<b>Peanuts</b>	No
<b>Milk</b>	Yes	<b>Sesame Seeds</b>	May Contain
<b>Molluscs</b>	No	<b>Soybeans</b>	May Contain
		<b>Sulphur Dioxide and Sulphites</b>	No

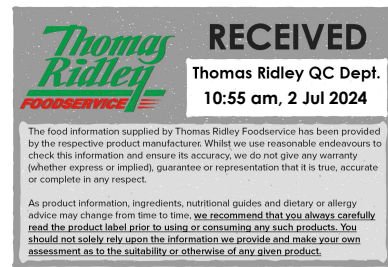
Risk Source:

### Additional Allergen Information

For allergens, including cereals containing gluten, see ingredients in capital letters. May contain traces of: sesame seeds, soya, nuts, eggs

## SUPPLEMENTARY INGREDIENT INFORMATION

<b>Palm Oil</b>	No
<b>Hydrogenated Vegetable Oil/Fat</b>	No
<b>GM Protein/DNA</b>	No



ADDITIVES

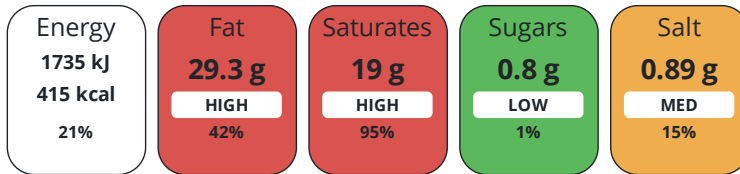
Product Contains:

<b>Artificial Antioxidants</b>	No	<b>Artificial Flavourings</b>	No
<b>Artificial Colours</b>	No	<b>Artificial Preservatives</b>	No
<b>Artificial Flavour Enhancers</b>	No	<b>Artificial Sweeteners</b>	No
<b>Suitable for Coeliacs</b>	No	<b>Halal Diet</b>	No
<b>Kosher Diet</b>	No	<b>Vegetarian Diet</b>	Suitable for
<b>Vegan Diet</b>	No		

DIET SUITABILITY

NUTRITIONAL INFORMATION

Each 100g/ml portion contains:



of your reference intake.

Typical values per 100g/ml : Energy 415kcal / 1735kj

Nutrient	per 100g/ml	RI per 100g/ml	per 2000g/ml serving	RI per 2000g/ml serving
<b>Energy (kJ)</b>	1735 kJ	21%	34700 kJ	413%
<b>Energy (kcal)</b>	415 kcal	21%	8300 kcal	415%
<b>Fat</b>	29.3 g	42%	586 g	837%
of which Saturates	19 g	95%	380 g	1900%
of which Mono-unsaturates	7.5 g		150 g	
of which Polyunsaturates	1.1 g		22 g	
<b>Carbohydrate</b>	31.8 g	12%	636 g	245%
of which Sugars	0.8 g	1%	16 g	18%
<b>Fibre</b>	1.8 g		36 g	
<b>Protein</b>	4.8 g	10%	96 g	192%
<b>Salt</b>	0.89 g	15%	17.8 g	297%
<b>Sodium</b>	360 mg		7200 mg	

Serving Size 2000 g

VITAMINS AND MINERALS

Nutrient	per 100g/ml	RI per 100g/ml	per 2000g/ml serving	RI per 2000g/ml serving
<b>Vitamin A</b>	228.1 µg	29%	4562 µg	570%
<b>Vitamin C</b>	0 mg	0%	-	
<b>Calcium</b>	13 mg	2%	260 mg	33%
<b>Iron</b>	0.6 mg	4%	12 mg	86%

SUPPLEMENTARY NUTRITIONAL INFORMATION

<b>Cholesterol per 100 g/ml (UK/FR)</b>	78 g
<b>Trans Fats per 100 g/ml</b>	0.8 g

HANDLING & STORAGE INFORMATION

**Directions For Use**

DEFREEZING TIME : approximately 1h 30 mn at room temperature LAMINATE Puff pastry is ready to use CUT this laminated puff pastry with the shape expected

**Storage Instructions**

To be stored in the freezer at - 18°C \*\*\* before use, until the Use By Date written on the label.

**Shelf Life from Time of Production** 270 Days

ACCREDITATIONS/ CERTIFICATIONS/ ASSURANCE SCHEMES ORIGIN

**BRCGS Certified**

**Other Accreditation**

**Product Country of Origin/Place of Provenance** France

**Additional Origin Details**

N/A

PRODUCT CHARACTERISTICS CONFIGURATION

Standards Testing

Case Configuration

Inner Pack Configuration

**Total Quantity of Inner Components in Outer Case** 6 Units

**Is the Outer Case Splittable?**

No

PRODUCT WEIGHTS

Inner Component

**Variable Weight Consumer Item** No

**Net Drained Weight** 0 kg

**Weight/Volume**

1 product = 2000g 6 plastic bags of 1 product each per box

Net weight per bag : 2kg Product length : 380mm +/-10mm

Product depth : 16mm +/-5mm Product width : 283mm

+/-10mm

Outer Case

**Outer Case Gross Weight** 12.42 kg

**Outer Case Net Weight** 12 kg

PRODUCT DIMENSIONS

Inner Component

**Inner Component Depth** 380 mm

**Inner Component Width** 283 mm

**Inner Component Height** 16 mm

Outer Case

**Outer Case Depth** 395 mm

**Outer Case Width** 295 mm

**Outer Case Height** 145 mm

PALLET INFORMATION

**Quantity of Cases Per Pallet Layer** 10 Cases

**Pallet Height** 1.9 MTR

**Quantity of Layers Per Pallet** 7 Layers

**Pallet Gross Weight** 884.8 kg

**Quantity of Cases Per Pallet** 70 Cases

PACKAGING

Inner Component Packaging

Type	Materials	Weight	Recycled Plastic %	Recyclable	Returnable	Composite
Paper/Polyethylene	Plastic	12 g	- %			

Outer Case Packaging

Type	Materials	Weight	Recycled Plastic %	Recyclable	Returnable	Composite
Case	Plastic	72 g	- %			
Case	Paper/Cardboard	350 g	- %			

Transport Packaging

Type	Materials	Weight	Recycled Plastic %	Recyclable	Returnable	Composite
Other	Plastic	270 g	- %			
Other	Wood	15000 g	- %			

OTHER INFORMATION

<b>Intrastat/Taric Code</b>	1905 90 80
-----------------------------	------------

**Manufacturer Comments**

-Nutritional informations : Based on 100g of product. -Raw product weight : 2000g. Baked product weight : about 1700g. -No minimum order for the product lines as long as this is part of a full lorry drop/order. -Delivery lead time: Day1 for day 4 (Tuesdays for Fridays, and Fridays for Mondays).

CONTACT INFORMATION

Address

Bridor  
 ZA de l'Olivet  
 Noyal-Sur-Vilaine  
 35538  
 France

P: (Phone) 00332 99 00 11 67

The information on the [Erudus System](#) has been supplied by the manufacturers of the products and, whilst the owners of the Erudus System take steps to ensure the information is regularly updated, they give no warranty and no guarantee that the information is accurate. Product information and ingredients may change, please always read product labels carefully in addition to using the information provided by Erudus.

We do not accept liability for any inaccuracies or incorrect information contained on this site. Please visit <http://www.erudus.com/terms-and-conditions> for full terms and conditions.