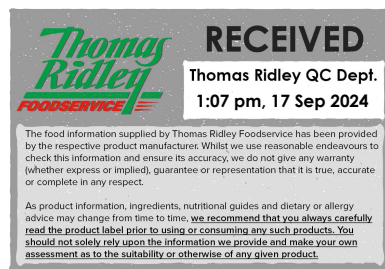


Changed Sep 16, 2024 13:50

Reviewed Sep 16, 2024 13:50

Erudus ID 1cb5fa568fb941dd8dc6fed5d458e6b4

Version 2.0



01723

Angel Delight Strawberry Flavour No Added Sugar 47g

Strawberry Flavour Dessert Mix With Sweetener 21x47g

PRODUCT DESCRIPTION

Strawberry flavour dessert mix with sweetener.

Brand	Angel Delight
Manufacturer Product Code	1009607
Product Type	Food
Product Category	Desserts
Storage Type	Ambient
Erudus ID	1cb5fa568fb941dd8dc6fed5d458e6b4
Specification Type	Generic
Inner Component GTIN	5000354770050
Outer Case GTIN	05000117770631



INGREDIENTS

Ingredient Declaration

Maltodextrin, Modified Starch, Whey Powder (**MILK**), Palm Oil, Palm Fat, Gelling Agents (Diphosphates, Sodium Phosphates,), Emulsifiers (Propylene Glycol Esters of Fatty Acids, Lecithins), Strawberry Powder (2%), **MILK** Proteins, Colours (Beetroot Red, Carotenes), Anti-caking Agent (Silicon Dioxide), Calcium Carbonate, Sweetener (Sucralose), Flavouring.

ALLERGENS

Product Contains:

Celery/Celериac	No	Mustard	No
Cereals Containing Gluten	May Contain	Nuts (Tree)	No
Barley	No	Almond nuts	No
Oats	No	Brazil nuts	No
Rye	No	Cashew nuts	No
Wheat (including Spelt and Khorasan)	May Contain	Hazelnuts	No
Crustacea	No	Macadamia (Queensland) nuts	No
Eggs	No	Pecan nuts	No
Fish	No	Pistachio nuts	No
Lupin	No	Walnuts	No
Milk	Yes	Peanuts	No
Molluscs	No	Sesame Seeds	No
		Soybeans	May Contain
		Sulphur Dioxide and Sulphites	No

Risk Source:

Cereals Containing Gluten (Risk Source)	Line	Wheat (Risk Source)	Line
Soybeans (Risk Source)	Line		

Additional Allergen Information

For allergens, see ingredients in bold. May also contain cereals containing gluten (wheat) and soya.

SUPPLEMENTARY
INGREDIENT
INFORMATION

Palm Oil	Yes
Hydrogenated Vegetable Oil/Fat	No
GM Protein/DNA	No

ADDITIVES

Product Contains:

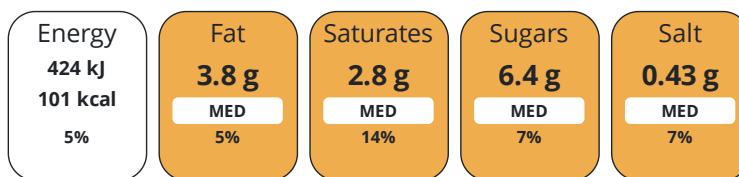
Artificial Antioxidants	No	Artificial Flavourings	No
Artificial Colours	No	Artificial Preservatives	No
Artificial Flavour Enhancers	No	Artificial Sweeteners	Yes

DIET
SUITABILITY

Vegan Diet	No	Vegetarian Diet	Suitable for
Halal Diet	No	Kosher Diet	No

NUTRITIONAL
INFORMATION

Each 100g/ml portion contains:



of your reference intake.

Typical values per 100g/ml : Energy 101kcal / 424kj

Nutrient	per 100g	RI per 100g	per 89g serving	RI per 89g serving	per 89g of prepared product
Energy (kJ)	424 kJ	5%	377.4 kJ	4%	-
Energy (kcal)	101 kcal	5%	89.9 kcal	4%	-
Fat	3.8 g	5%	3.4 g	5%	-
of which Saturates	2.8 g	14%	2.5 g	13%	-
Carbohydrate	13 g	5%	11.6 g	4%	-
of which Sugars	6.4 g	7%	5.7 g	6%	-
Fibre	< 0.5 g		0.4 g		-
Protein	3.6 g	7%	3.2 g	6%	-
Salt	0.43 g	7%	0.4 g	7%	-

Serving Size	89 g
Serving Size Description	Per portion (89g) as prepared
Number of Servings	4 Servings

SUPPLEMENTARY
NUTRITIONAL
INFORMATION

HFSS (HIGH IN
FAT, SALT AND
SUGAR)

HFSS Status	No
--------------------	----

HANDLING &
STORAGE
INFORMATION

Directions For Use

Whip up a delightful and fluffy instant treat 1. Pour 300ml (approx. ½ a pint) of chilled fresh semi-skimmed or whole milk into a bowl. 2. Add the Angel Delight and whisk until light and creamy. 3. Leave to set for 5 minutes before serving.

Storage Instructions

Store in a cool, dry place. Once made up keep refrigerated & consume within 24 hours.

Shelf Life from Time of Production	365 Days
---	----------

ACCREDITATIONS/ CERTIFICATIONS/ ASSURANCE SCHEMES ORIGIN	BRCGS Certified		Roundtable of Sustainable Palm Oil (RSPO)								
	Other Accreditation										
PRODUCT CHARACTERISTICS CONFIGURATION	Product Country of Origin/Place of		United Kingdom								
	Provenance										
	Standards Testing										
	Case Configuration		Inner Pack Configuration								
PRODUCT WEIGHTS	Total Quantity of Inner Components in		21 Units								
	Outer Case										
	Is the Outer Case Splittable?		Yes								
	Inner Component										
	Variable Weight Consumer Item		No								
	Inner Component Weight		47 g								
	e mark		Yes								
	Outer Case										
	Outer Case Gross Weight		1.2 kg								
	Outer Case Net Weight		0.99 kg								
PRODUCT DIMENSIONS	Inner Component										
	Inner Component Depth		7 mm								
	Inner Component Width		130 mm								
	Inner Component Height		160 mm								
	Outer Case										
	Outer Case Depth		245 mm								
	Outer Case Width		140 mm								
	Outer Case Height		170 mm								
	PALLET INFORMATION	Quantity of Cases Per Pallet Layer		33 Cases		Pallet Type		UK Standard Pallet			
		Quantity of Layers Per Pallet		7 Layers		Pallet Height		1.36 MTR			
Quantity of Cases Per Pallet		231 Cases		Pallet Gross Weight		306.05 kg					
Inner Component Packaging											
PACKAGING	Type		Materials		Weight		Recycled Plastic %	Recyclable	Returnable	Composite	
	Sachet		Paper/Cardboard		5.2 g		-				
	Outer Case Packaging										
	Type		Materials		Weight		Recycled Plastic %	Recyclable	Returnable	Composite	
	Case		Paper/Cardboard		98 g		-				
	Transport Packaging										
	Type		Materials		Weight		Recycled Plastic %	Recyclable	Returnable	Composite	
	Pallet Wrap		Plastic / LDPE (Low Density Polyethylene)		150 g		-				
	Pallet		Wood		25000 g		-		Yes		
	OTHER INFORMATION	Manufacturer Comments									
		Nutrition per 100g as prepared with semi-skimmed milk									

CONTACT
INFORMATION

Address

Premier Foods
Premier Foods, Premier House
Centrium Business Park, Griffiths Way
St Albans
AL1 2RE
England

P. (Phone) 01727 815850

Complaints Contact

Consumer Relations Team
Customer Care
LCescalations@premierfoods.co.uk

Technical Contact

Nicola Ratcliffe
Business Unit Coordinator
nicola.ratcliffe@premierfoods.co.uk

The information on the [Erudus System](#) has been supplied by the manufacturers of the products and, whilst the owners of the Erudus System take steps to ensure the information is regularly updated, they give no warranty and no guarantee that the information is accurate. Product information and ingredients may change, please always read product labels carefully in addition to using the information provided by Erudus.

We do not accept liability for any inaccuracies or incorrect information contained on this site.
Please visit <http://www.erudus.com/terms-and-conditions> for full terms and conditions.