

Changed Jul 14, 2023 04:42

Erudus ID 03b456ea2fd34db5b8f88bca364f1b30

Version 1.0

01994

# Blue Dragon Sriracha sauce 12x700ml

Sriracha Sauce

## PRODUCT DESCRIPTION

Thai hot red chilli sauce

Brand	AB World
Manufacturer Product Code	220267
Product Type	Food
Product Category	Sauces
Storage Type	Ambient
Erudus ID	03b456ea2fd34db5b8f88bca364f1b30
Specification Type	Legacy



Inner Component GTIN	5010338206703
Outer Case GTIN	05015612204710



## INGREDIENTS

### Ingredient Declaration

Water, Red Chillies (28%), Sugar, Minced Garlic, Salt, Glucose-Fructose Syrup, Modified Maize Starch, Acid (Acetic Acid), Stabiliser (Xanthan Gum), Preservative (Sodium Benzoate), Colour (Paprika Extract), Chilli Extract.

## ALLERGENS

Product Contains:

<b>Celery/Celeriac</b>	No	<b>Mustard</b>	No
<b>Cereals Containing Gluten</b>	No	<b>Nuts (Tree)</b>	May Contain
<b>Barley</b>	No	<b>Almond nuts</b>	May Contain
<b>Oats</b>	No	<b>Brazil nuts</b>	May Contain
<b>Rye</b>	No	<b>Cashew nuts</b>	May Contain
<b>Wheat (including Spelt and Khorasan)</b>	No	<b>Hazelnuts</b>	May Contain
<b>Crustacea</b>	No	<b>Macadamia (Queensland) nuts</b>	May Contain
<b>Eggs</b>	No	<b>Pecan nuts</b>	May Contain
<b>Fish</b>	No	<b>Pistachio nuts</b>	May Contain
<b>Lupin</b>	No	<b>Walnuts</b>	May Contain
<b>Milk</b>	No	<b>Peanuts</b>	May Contain
<b>Molluscs</b>	No	<b>Sesame Seeds</b>	May Contain
		<b>Soybeans</b>	No
		<b>Sulphur Dioxide and Sulphites</b>	No

Risk Source:

### Additional Allergen Information

Allergy Advice: May contain sesame seeds, peanuts and nuts.

## RECEIVED

Thomas Ridley QC Dept.  
11:04 am, 25 Apr 2024

The food information supplied by Thomas Ridley Foodservice has been provided by the respective product manufacturer. Whilst we use reasonable endeavours to check this information and ensure its accuracy, we do not give any warranty (whether express or implied), guarantee or representation that it is true, accurate or complete in any respect.

As product information, ingredients, nutritional guides and dietary or allergy advice may change from time to time, we recommend that you always carefully read the product label prior to using or consuming any such products. You should not solely rely upon the information we provide and make your own assessment as to the suitability or otherwise of any given product.



SUPPLEMENTARY  
INGREDIENT  
INFORMATION

<b>Palm Oil</b>	No
<b>Hydrogenated Vegetable Oil/Fat</b>	No
<b>GM Protein/DNA</b>	No

ADDITIVES

Product Contains:

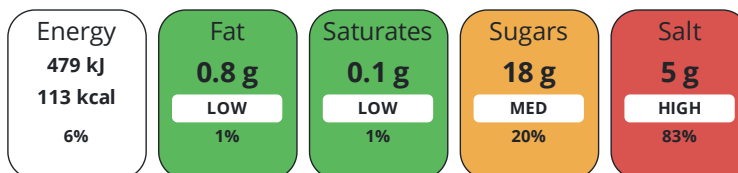
<b>Artificial Antioxidants</b>	No	<b>Artificial Flavourings</b>	No
<b>Artificial Colours</b>	No	<b>Artificial Preservatives</b>	Yes
<b>Artificial Flavour Enhancers</b>	No	<b>Artificial Sweeteners</b>	No

DIET  
SUITABILITY

<b>Suitable for Coeliacs</b>	No	<b>Halal Diet</b>	No
<b>Kosher Diet</b>	No	<b>Vegetarian Diet</b>	Suitable for
<b>Vegan Diet</b>	Suitable for		

NUTRITIONAL  
INFORMATION

Each 100g/ml portion contains:



of your reference intake.

Typical values per 100g/ml : Energy 113kcal / 479kj

Nutrient	per 100g/ml	RI per 100g/ml
<b>Energy (kJ)</b>	479 kJ	6%
<b>Energy (kcal)</b>	113 kcal	6%
<b>Fat</b>	0.8 g	1%
of which Saturates	< 0.1 g	1%
<b>Carbohydrate</b>	24.2 g	9%
of which Sugars	18 g	20%
<b>Fibre</b>	3 g	
<b>Protein</b>	0.9 g	2%
<b>Salt</b>	5 g	83%

SUPPLEMENTARY  
NUTRITIONAL  
INFORMATION

HANDLING &  
STORAGE  
INFORMATION

**Directions For Use**

Made from a blend of red chillies. Hot chilli Sriracha sauce can be used as a dip and an ingredient. The easy way of adding heat to any dish.

**Storage Instructions**

Store in a cool, dry place. Refrigerate after opening and consume within 12 weeks.

**Shelf Life from Time of Production** 730 Days

ACCREDITATIONS/  
CERTIFICATIONS/  
ASSURANCE  
SCHEMES  
ORIGIN

**BRCGS Certified**

**Other Accreditation**

**Product Country of Origin/Place of** Thailand

**Provenance**

**Additional Origin Details**

Produced in Thailand with local and imported garlic.

PRODUCT CHARACTERISTICS	Standards Testing						
	<b>Do you undertake trend analysis of microbiological results?</b>	No	<b>Is shelf life testing undertaken?</b>		No		
CONFIGURATION	Case Configuration		Inner Pack Configuration				
	<b>Total Quantity of Inner Components in Outer Case</b>	12 Units					
	<b>Is the Outer Case Splittable?</b>	Yes					
PRODUCT WEIGHTS	Inner Component						
	<b>Variable Weight Consumer Item</b>	Yes					
	<b>Weight/Volume</b>						
	700ml						
	Outer Case						
PRODUCT DIMENSIONS	<b>Outer Case Gross Weight</b>		10.85 kg				
	<b>Outer Case Net Weight</b>		9.75 kg				
	Inner Component						
	<b>Inner Component Depth</b>		76 mm				
	<b>Inner Component Width</b>		76 mm				
	<b>Inner Component Height</b>		248 mm				
	Outer Case						
	<b>Outer Case Depth</b>		342 mm				
	<b>Outer Case Width</b>		258 mm				
	<b>Outer Case Height</b>		267 mm				
PALLET INFORMATION	<b>Quantity of Cases Per Pallet Layer</b>	12 Cases	<b>Pallet Height</b>		1.5 MTR		
	<b>Quantity of Layers Per Pallet</b>	5 Layers	<b>Pallet Gross Weight</b>		681 kg		
	<b>Quantity of Cases Per Pallet</b>	60 Cases					
PACKAGING	Inner Component Packaging						
	<b>Type</b>	<b>Materials</b>	<b>Weight</b>	<b>Recycled Plastic %</b>	<b>Recyclable</b>	<b>Returnable</b>	
	Bottle	Plastic	50 g	- %			
	Bottle	Paper/Cardboard	1 g	- %			
	Bottle	Aluminium	0.5 g	- %			
	Outer Case Packaging						
	<b>Type</b>	<b>Materials</b>	<b>Weight</b>	<b>Recycled Plastic %</b>	<b>Recyclable</b>	<b>Returnable</b>	
	Case	Paper/Cardboard	500 g	- %			
	OTHER INFORMATION	<b>Manufacturer Comments</b>					
		N/A					

CONTACT  
INFORMATION

Address

AB World  
Kiriana House,  
Kiribati Way,  
Leigh,  
Lancashire,  
WN7 5RS  
England

P. (Phone) 01942 267000

The information on the [Erudus System](#) has been supplied by the manufacturers of the products and, whilst the owners of the Erudus System take steps to ensure the information is regularly updated, they give no warranty and no guarantee that the information is accurate. Product information and ingredients may change, please always read product labels carefully in addition to using the information provided by Erudus.

We do not accept liability for any inaccuracies or incorrect information contained on this site.  
Please visit <http://www.erudus.com/terms-and-conditions> for full terms and conditions.