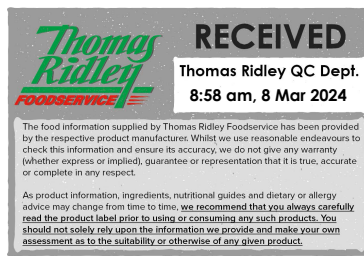


Changed Mar 08, 2024 08:44

Reviewed Mar 08, 2024 08:44

Erudus ID d3cf0320068b473aa29518a02f9f1523

Version 3.0



Thomas Ridley
FOODSERVICE

RECEIVED
Thomas Ridley QC Dept.
8:58 am, 8 Mar 2024

The food information supplied by Thomas Ridley Foodservice has been provided by the respective product manufacturer. Whilst we use reasonable endeavours to check this information and ensure its accuracy, we do not give any warranty (whether express or implied), guarantee or representation that it is true, accurate or complete in any respect.

As product information, ingredients, nutritional guides and dietary or allergy advice may change from time to time, we recommend that you always carefully read the product label prior to using or consuming any such products. You should not solely rely upon the information we provide and make your own assessment as to the suitability or otherwise of any given product.



02002

ORANGE & POPPY SEED CAKE (1 x 14 ptn)

Orange & Poppy Seed Cake 1x1530g

PRODUCT DESCRIPTION

A light orange and poppy seed sponge filled and iced on top with a sweet orange icing.

Brand	The Handmade Cake Co.
Manufacturer Product Code	075681
Product Type	Food
Product Category	Cakes and Tarts
Storage Type	Frozen
Erudus ID	d3cf0320068b473aa29518a02f9f1523
Specification Type	Bakery Products



Outer Case GTIN 5060044075681



INGREDIENTS

Ingredient Declaration

Sugar, **WHEAT** Flour (with Calcium Carbonate, Niacin, Iron, Thiamin), Vegetable Margarine [Palm Oil, Rapeseed Oil, Water, Salt, Emulsifier (E471), Natural Flavouring], Pasteurised Free Range **EGG**, Salted Butter [Butter (**MILK**), Salt], Orange Juice From Concentrate (6%), Orange Zest (5%), Water, Poppy Seeds (1.2%), Mascarpone Cheese (**MILK**), Baking Powder [Raising Agents (E575, E500(ii), E336(i)), Maize Starch], Orange Extract.

ALLERGENS

Product Contains:

Celery/Celery	No	Mustard	No
Cereals Containing Gluten	Yes	Nuts (Tree)	May Contain
Barley	No	Almond nuts	May Contain
Oats	No	Brazil nuts	May Contain
Rye	No	Cashew nuts	May Contain
Wheat (including Spelt and Khorasan)	Yes	Hazelnuts	May Contain
Crustacea	No	Macadamia (Queensland) nuts	May Contain
Eggs	Yes	Pecan nuts	May Contain
Fish	No	Pistachio nuts	May Contain
Lupin	No	Walnuts	May Contain
Milk	Yes	Peanuts	No
Molluscs	No	Sesame Seeds	No
		Soybeans	No
		Sulphur Dioxide and Sulphites	No

Risk Source:

Additional Allergen Information

For allergens, including cereals containing gluten, see ingredients in BOLD. This product may contain traces of nuts as it has been made in a bakery that uses nut ingredients.

SUPPLEMENTARY
INGREDIENT
INFORMATION

Palm Oil	Yes
Hydrogenated Vegetable Oil/Fat	No
GM Protein/DNA	No

ADDITIVES

Product Contains:

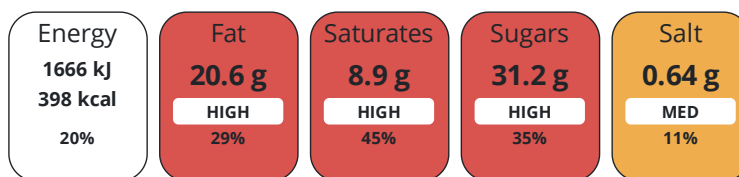
Artificial Antioxidants	No	Artificial Flavourings	No
Artificial Colours	No	Artificial Preservatives	No
Artificial Flavour Enhancers	No	Artificial Sweeteners	No

DIET
SUITABILITY

Vegan Diet	No	Vegetarian Diet	Suitable for
Halal Diet	No	Kosher Diet	No

NUTRITIONAL
INFORMATION

Each 100g/ml portion contains:



of your reference intake.

Typical values per 100g/ml : Energy 398kcal / 1666kj

Nutrient	per 100g	RI per 100g	per 110g serving	RI per 110g serving
Energy (kJ)	1666 kJ	20%	1832.6 kJ	22%
Energy (kcal)	398 kcal	20%	437.8 kcal	22%
Fat	20.6 g	29%	22.7 g	32%
of which Saturates	8.9 g	45%	9.8 g	49%
Carbohydrate	48.3 g	19%	53.1 g	20%
of which Sugars	31.2 g	35%	34.3 g	38%
Fibre	2 g		2.2 g	
Protein	4.1 g	8%	4.5 g	9%
Salt	0.64 g	11%	0.7 g	12%
Serving Size	110 g			

SUPPLEMENTARY
NUTRITIONAL
INFORMATION

HFSS (HIGH IN
FAT, SALT AND
SUGAR)

HFSS Status	Yes
--------------------	-----

HANDLING &
STORAGE
INFORMATION

Directions For Use

Remove wrapping before defrosting. Defrost at room temperature for 4 hours. Serve at room temperature. Once defrosted store in a cool dry place. Do not refreeze once defrosted. Consume within 5 days.

Storage Instructions

Keep frozen, store at -18°C or below.

Shelf Life from Time of Production	365 Days	Exempt From Shelf Life Labelling	No
-------------------------------------------	----------	-----------------------------------------	----

Other Accreditation

N/A

ORIGIN

Product Country of Origin/Place of United Kingdom

Provenance

PRODUCT
CHARACTERISTICS

Standards Testing

Do you undertake trend analysis of microbiological results? Yes **Is shelf life testing undertaken?** Yes

Microbiological Standards

Organism	Description	Frequency	Target	Maximum	Sample (g or ml)
Enterobacteriaceae (cfu/g or ml)		Annually	<10	100	1
Listeria SPP (cfu/g or ml)	Detected/Not detected in 25g	Annually	=0	1	25
Staphylococcus Aureus (cfu/g or ml)		Annually	<200	10000	1
Salmonella (cfu/g or ml)	Detected/Not detected in 25g	Annually	=0	1	25
Yeast (cfu/g or ml)		Annually	<100	10000	1
Moulds (cfu/g or ml)		Annually	<100	10000	1

CONFIGURATION

Case Configuration

Inner Pack Configuration

Total Quantity of Inner Components in 1 Units

Outer Case

Is the Outer Case Splittable? No

PRODUCT
WEIGHTS

Inner Component

Variable Weight Consumer Item No

Inner Component Weight 1530 g

Outer Case

Outer Case Gross Weight 1.72 kg

Outer Case Net Weight 1.53 kg

PRODUCT
DIMENSIONS

Inner Component

Inner Component Depth 256 mm

Inner Component Width 256 mm

Inner Component Height 50 mm

Outer Case

Outer Case Depth 259 mm

Outer Case Width 259 mm

Outer Case Height 96 mm

PALLET
INFORMATION

Quantity of Cases Per Pallet Layer 12 Cases

Pallet Height 1.3 MTR

Quantity of Layers Per Pallet 12 Layers

Pallet Gross Weight 273.28 kg

Quantity of Cases Per Pallet 144 Cases

PACKAGING

Inner Component Packaging

Type	Materials	Weight	Recycled Plastic %	Recyclable	Returnable	Composite
Film	Plastic	3 g	- %			
Film	Paper/Cardboard	59 g	- %			

Outer Case Packaging

Type	Materials	Weight	Recycled Plastic %	Recyclable	Returnable	Composite
Case	Paper/Cardboard	125 g	- %			

Transport Packaging

Type	Materials	Weight	Recycled Plastic %	Recyclable	Returnable	Composite
Other	Plastic	2.08 g	- %			
Other	Paper/Cardboard	2.08 g	- %			
Other	Wood	173.61 g	- %			

OTHER INFORMATION

Intrastat/Taric Code	1905907000
Commodity Code	19059070

Manufacturer Comments

Transit packaging is given per case based on a full pallet load.

CONTACT INFORMATION

Address

The Handmade Cake Co.
 The Bakery
 Gardner Road
 Maidenhead
 Berkshire
 SL6 7TU
 United Kingdom

P: (Phone) 01628 770908

Complaints Contact

Technical Team
 Maidenhead.Technical@mdesserts.com

P: (Phone) 01628 770908 Ext. 1052

Technical Contact

Technical Team
 Maidenhead.Technical@mdesserts.com

P: (Phone) 01628 770908 Ext. 1052

The information on the [Erudus System](#) has been supplied by the manufacturers of the products and, whilst the owners of the Erudus System take steps to ensure the information is regularly updated, they give no warranty and no guarantee that the information is accurate. Product information and ingredients may change, please always read product labels carefully in addition to using the information provided by Erudus.

We do not accept liability for any inaccuracies or incorrect information contained on this site. Please visit <http://www.erudus.com/terms-and-conditions> for full terms and conditions.