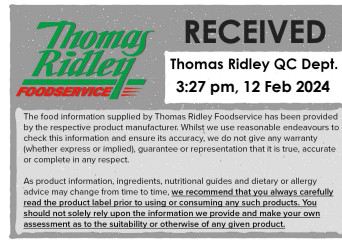


Changed Feb 12, 2024 14:02

Reviewed Feb 12, 2024 14:02

Erudus ID bf4b1c6cc1e940049d8eb348a8a3b9a7

Version 2.0



Kellogg's Corn Flakes Cereal Bag Pack 4x500g

Corn Flakes Cereal 1x2kg

PRODUCT DESCRIPTION

The original and the best, Kellogg's Corn Flakes are the classic way to start your day. Each delicious corn flake is naturally sun-dried and ripens in 140 days of sunshine and is then rolled and toasted to perfection to give you that iconic golden crisp crunchiness and classic taste you know and love. Each bowl of Kellogg's Corn Flakes is enriched with 8 vitamins and minerals, including vitamins B1, B2, B3, B6, B9 and B23. Not to mention, each bowl of Corn Flakes provides 50% of your daily vitamin D needs which contributes to the maintenance of normal bones. Corn Flakes are proudly made with no artificial colours or flavours so you can rest assured you and your family are getting only the best ingredients in your cereal. Best of all, the corn used in Kellogg's Corn Flakes is responsibly sourced and grown by farmers in Argentina, where conditions are ideal for this crop to thrive, proving why Kellogg's Corn Flakes are the original & best and have been delighting families for over 100 years. *Contains $\geq 15\%$ RI vitamin D which contributes to the maintenance of normal bones *Please always check the label of the pack you receive as there may be differences from the information you read on site due to stock changeover

Brand	Kellanova (previously Kellogg's)
Manufacturer Product Code	5147852000
Product Type	Food
Product Category	Breakfast Cereal
Storage Type	Ambient
Erudus ID	bf4b1c6cc1e940049d8eb348a8a3b9a7
Specification Type	Cereals



Inner Component GTIN	5050083478529
Outer Case GTIN	5050083478529



INGREDIENTS

Ingredient Declaration

Maize, BARLEY malt extract, sugar, salt, niacin, iron, vitamin B6, riboflavin, thiamin, folic acid, vitamin D, vitamin B12, VITAMINS & MINERALS: Niacin, iron, vitamin B6, riboflavin, thiamin, folic acid, vitamin D, vitamin B12.

ALLERGENS

Product Contains:

Celery/Celeriac	No	Mustard	No
Cereals Containing Gluten	Yes	Nuts (Tree)	No
Barley	Yes	Almond nuts	No
Oats	No	Brazil nuts	No
Rye	No	Cashew nuts	No
Wheat (including Spelt and Khorasan)	No	Hazelnuts	No
Crustacea	No	Macadamia (Queensland) nuts	No
Eggs	No	Pecan nuts	No
Fish	No	Pistachio nuts	No
Lupin	No	Walnuts	No
Milk	No	Peanuts	No
Molluscs	No	Sesame Seeds	No
		Soybeans	No
		Sulphur Dioxide and Sulphites	No

SUPPLEMENTARY INGREDIENT INFORMATION

Palm Oil	No
Hydrogenated Vegetable Oil/Fat	No
GM Protein/DNA	No

ADDITIVES

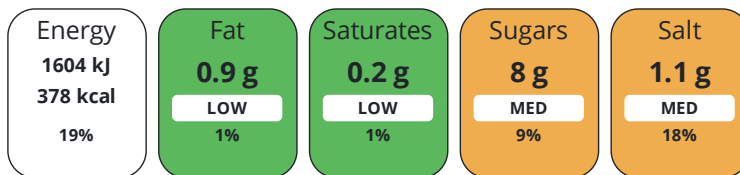
Product Contains:

DIET SUITABILITY

Vegan Diet	No	Vegetarian Diet	Suitable for
Halal Diet	Suitable for	Kosher Diet	Suitable for

NUTRITIONAL INFORMATION

Each 100g/ml portion contains:



of your reference intake.

Typical values per 100g/ml : Energy 378kcal / 1604kJ

Nutrient	per 100g	RI per 100g
Energy (kJ)	1604 kJ	19%
Energy (kcal)	378 kcal	19%
Fat	0.9 g	1%
of which Saturates	0.2 g	1%
Carbohydrate	84 g	32%
of which Sugars	8 g	9%
Fibre	3 g	
Protein	7 g	14%
Salt	1.1 g	18%

VITAMINS AND MINERALS

Nutrient	per 100g	RI per 100g
Folate/Folic Acid	166 µg	83%
Iron	8 mg	57%

SUPPLEMENTARY
NUTRITIONAL
INFORMATION

HFSS (HIGH IN
FAT, SALT AND
SUGAR)
HANDLING &
STORAGE
INFORMATION

HFSS Status	No
Directions For Use	
Eat as directed	
Storage Instructions	
Store in a cool dry place.	

ORIGIN

Shelf Life from Time of Production	365 Days	Exempt From Shelf Life Labelling	No
Product Country of Origin/Place of Provenance	United Kingdom		

PRODUCT
CHARACTERISTICS
CONFIGURATION

Standards Testing	
Case Configuration	Inner Pack Configuration
Variable Inner Components in Outer Case	No
Total Quantity of Inner Components in Outer Case	1 Units
Is the Outer Case Splittable?	No

PRODUCT
WEIGHTS

Inner Component	
Variable Weight Consumer Item	No
Inner Component Weight	2 kg
Outer Case	
Outer Case Gross Weight	2.3 kg
Outer Case Net Weight	2 kg

PRODUCT
DIMENSIONS

Inner Component	
Inner Component Depth	72 mm
Inner Component Width	200 mm
Inner Component Height	325 mm
Outer Case	
Outer Case Depth	320 mm
Outer Case Width	240 mm
Outer Case Height	280 mm

PALLET
INFORMATION

Quantity of Cases Per Pallet Layer	15 Cases	Pallet Height	1.29 MTR
Quantity of Layers Per Pallet	4 Layers	Pallet Gross Weight	178 kg
Quantity of Cases Per Pallet	60 Cases		

PACKAGING

Inner Component Packaging						
Type	Materials	Weight	Recycled Plastic %	Recyclable	Returnable	Composite
Box	Plastic	10 g	0.00 %			
Outer Case Packaging						
Type	Materials	Weight	Recycled Plastic %	Recyclable	Returnable	Composite
Bag	Paper/Cardboard	259 g	- %			

OTHER
INFORMATION

Commodity Code	19041010
-----------------------	----------

CONTACT
INFORMATION

Address

Kellanova (previously Kellogg's)
Kellogg
Orange Tower
Salford
Greater Manchester
M50 2HF
England

P. (Phone) 07716254258

Commercial Contact

Chris Duffy
National Account Executive
Chris.Duffy@kellogg.com

The information on the [Erudus System](#) has been supplied by the manufacturers of the products and, whilst the owners of the Erudus System take steps to ensure the information is regularly updated, they give no warranty and no guarantee that the information is accurate. Product information and ingredients may change, please always read product labels carefully in addition to using the information provided by Erudus.

We do not accept liability for any inaccuracies or incorrect information contained on this site.
Please visit <http://www.erudus.com/terms-and-conditions> for full terms and conditions.