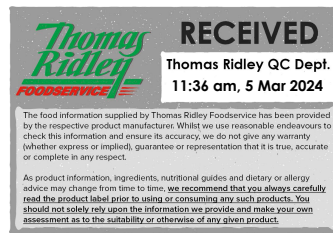


02062



# Eat Natural bars with benefits high fibre apple, ginger & dark chocolate (AGD) 12 x 45g

Bars With Benefits High Fibre Apple, Ginger & Dark Chocolate 12x

## PRODUCT DESCRIPTION

12 bars of nuts and dried fruit with dark chocolate.

Brand	Ferrero UK Ltd
Manufacturer Product Code	256613
Product Type	Food
Product Category	Nuts and Seeds
Storage Type	Ambient
Erudus ID	82fa0d8d765f4d16b75e385d14217a71
Specification Type	Legacy



Inner Component GTIN	96137062
Outer Case GTIN	5013803000158



## INGREDIENTS

### Ingredient Declaration

Dark chocolate 20% (cocoa mass, sugar, cocoa butter, emulsifier: **SOYA** lecithin), shredded coconut 16%, glucose syrup, dried apricots 9%, dried cranberries 8% (cranberries, sugar, sunflower oil), **CASHEWS** 7%, crisped rice (rice, sugar), honey, linseeds 5%, dried apple 4% cocoa powder, ginger 1%.

## ALLERGENS

Product Contains:

<b>Celery/Celeriac</b>	No	<b>Mustard</b>	No
<b>Cereals Containing Gluten</b>	No	<b>Nuts (Tree)</b>	Yes
<b>Barley</b>	No	<b>Almond nuts</b>	No
<b>Oats</b>	No	<b>Brazil nuts</b>	No
<b>Rye</b>	No	<b>Cashew nuts</b>	Yes
<b>Wheat (including Spelt and Khorasan)</b>	No	<b>Hazelnuts</b>	No
<b>Crustacea</b>	No	<b>Macadamia (Queensland) nuts</b>	No
<b>Eggs</b>	No	<b>Pecan nuts</b>	No
<b>Fish</b>	No	<b>Pistachio nuts</b>	No
<b>Lupin</b>	No	<b>Walnuts</b>	No
<b>Milk</b>	May Contain	<b>Peanuts</b>	May Contain
<b>Molluscs</b>	No	<b>Sesame Seeds</b>	May Contain
		<b>Soybeans</b>	Yes
		<b>Sulphur Dioxide and Sulphites</b>	No

Risk Source:

### Additional Allergen Information

For allergens, see ingredients in BOLD CAPITALS. May also contain: Peanuts, Sesame seeds and cow's milk.

## SUPPLEMENTARY INGREDIENT INFORMATION

<b>GM Protein/DNA</b>	No
-----------------------	----

ADDITIVES

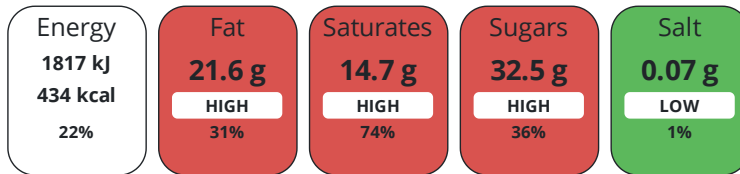
Product Contains:

<b>Artificial Antioxidants</b>	No	<b>Artificial Flavourings</b>	No
<b>Artificial Colours</b>	No	<b>Artificial Preservatives</b>	No
<b>Artificial Flavour Enhancers</b>	No	<b>Artificial Sweeteners</b>	No
<b>Suitable for Coeliacs</b>	No	<b>Halal Diet</b>	No
<b>Kosher Diet</b>	No	<b>Vegetarian Diet</b>	Suitable for
<b>Vegan Diet</b>	No		

DIET SUITABILITY

NUTRITIONAL INFORMATION

Each 100g/ml portion contains:



of your reference intake.

Typical values per 100g/ml : Energy 434kcal / 1817kJ

Nutrient	per 100g/ml	RI per 100g/ml	per 45g/ml serving	RI per 45g/ml serving
<b>Energy (kJ)</b>	1817 kJ	22%	817.7 kJ	10%
<b>Energy (kcal)</b>	434 kcal	22%	195.3 kcal	10%
<b>Fat</b>	21.6 g	31%	9.7 g	14%
<b>of which Saturates</b>	14.7 g	74%	6.6 g	33%
<b>Carbohydrate</b>	55.6 g	21%	25 g	10%
<b>of which Sugars</b>	32.5 g	36%	14.6 g	16%
<b>Fibre</b>	7.7 g		3.5 g	
<b>Protein</b>	4.7 g	9%	2.1 g	4%
<b>Salt</b>	0.07 g	1%	-	
<b>Serving Size</b>	45 g			

SUPPLEMENTARY NUTRITIONAL INFORMATION

HANDLING & STORAGE INFORMATION

**Directions For Use**

For allergens, see ingredients in BOLD CAPITALS. Warning. whilst we make every effort, we cannot guarantee that nutshell fragments will not find their way into this bar.

**Storage Instructions**

Store in a cool dry place.

**Shelf Life from Time of Production** 273 Days

ORIGIN

**Product Country of Origin/Place of Provenance** United Kingdom

PRODUCT CHARACTERISTICS

Standards Testing			
<b>Do you undertake trend analysis of microbiological results?</b>	No	<b>Is shelf life testing undertaken?</b>	No

CONFIGURATION

Case Configuration		Inner Pack Configuration
<b>Total Quantity of Inner Components in Outer Case</b>	12 Units	

PRODUCT WEIGHTS

Inner Component	
<b>Variable Weight Consumer Item</b>	No
<b>Weight/Volume</b>	
12x45g	
Outer Case	
<b>Outer Case Gross Weight</b>	0.59 kg
<b>Outer Case Net Weight</b>	0.54 kg

PRODUCT DIMENSIONS

Inner Component	
<b>Inner Component Depth</b>	140 mm
<b>Inner Component Width</b>	40 mm
<b>Inner Component Height</b>	20 mm
Outer Case	
<b>Outer Case Depth</b>	185 mm
<b>Outer Case Width</b>	140 mm
<b>Outer Case Height</b>	75 mm

PALLET INFORMATION

<b>Quantity of Cases Per Pallet Layer</b>	108 Cases	<b>Pallet Height</b>	2.16 MTR
<b>Quantity of Layers Per Pallet</b>	5 Layers		
<b>Quantity of Cases Per Pallet</b>	540 Cases		

PACKAGING

Outer Case Packaging						
Type	Materials	Weight	Recycled Plastic %	Recyclable	Returnable	Composite
Case	Paper/Cardboard	54 g	- %			

OTHER INFORMATION CONTACT INFORMATION

Address  
 Ferrero UK Ltd  
 889 Greenford Rd  
 Greenford  
 UB6 0HE  
 England

P: (Phone) 07927565564

The information on the [Erudus System](#) has been supplied by the manufacturers of the products and, whilst the owners of the Erudus System take steps to ensure the information is regularly updated, they give no warranty and no guarantee that the information is accurate. Product information and ingredients may change, please always read product labels carefully in addition to using the information provided by Erudus.

We do not accept liability for any inaccuracies or incorrect information contained on this site. Please visit <http://www.erudus.com/terms-and-conditions> for full terms and conditions.