

Coca-Cola Original Taste 330ml



EAN

5449000000996

Target market(s)

GB

Components

Ingredients

Carbonated Water
Sugar
Colour (Caramel E150d)
Phosphoric Acid
Natural Flavourings including Caffeine

Nutrition

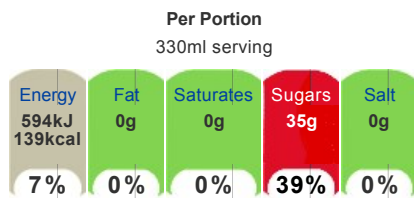
	Per: 100ml	Per: 330ml (%*)
Energy:	180kJ/ 42kcal	594kJ/ 139kcal (7%)
Fat:	0g	0g (0%)
of which saturates:	0g	0g (0%)
Carbohydrate:	10.6g	35g (13%)
of which sugars:	10.6g	35g (39%)
Protein:	0g	0g (0%)
Salt:	0g	0g (0%)

*Reference intake of an average adult (8400kJ/2000kcal)

Calculated Nutrition

	per 100ml	Per: 330ml
Energy (kJ)	180	594
Energy (kcal)	42	139
Fat (g)	0	0
of which saturates (g)	0	0
Carbohydrate (g)	10.6	35
of which sugars (g)	10.6	35
Protein (g)	0	0
Salt (g)	0	0

Front of Pack Nutrition



100ml: 180kJ / 42kcal

Reference intake of an average adult (8400kJ/2000kcal)

Product Description

Brand

Coca-Cola

Standardised Brand

Brand - Coca-Cola

Regulated Product Name

Sparkling Soft Drink with Vegetable Extracts

Marketing

Company Name

Coca-Cola Enterprises Ltd.

Company Address

Uxbridge,
UB8 1EZ.

Product Marketing

Coca-Cola Classic is the world's favourite soft drink and has been enjoyed since 1886.

Great Coke taste
Only natural flavours
No added preservatives
Gluten-free, dairy-free and nut-free

Serve ice cold for maximum refreshment.

Keep one cold in the fridge.

Please recycle.

Brand Marketing

Coca-Cola and the Environment
Coca-Cola is committed to making a positive difference - to the health of the planet, consumers and the communities it serves. The company is working hard to reduce its impact on the environment in everything it does - growing more while using less in areas such as energy and water use, waste reduction and recycling - and by encouraging people to think more about the positive impact they can have on their local environment.

Trademark Information

© 2014 The Coca-Cola Company

Storage & Usage

Storage Type

Type

Ambient

Preparation and Usage

Best served chilled.

Storage

Store cool and dry.
Best before end: See base of can for date.

Brandbank Captured Pack Data

Pack Size

330ml e

Numeric Size

Numeric Size - 330

Recycling Info

Can - Metal - Widely Recycled

Pack Type

Type - Can

Origin

Place of Provenance - Made in GB

Recycling Scheme

- OPRL

Customer Services

Manufacturers Address

Coca-Cola Enterprises Ltd.,
Uxbridge,
UB8 1EZ.

Return To

Coca-Cola Enterprises Ltd.,
Uxbridge,
UB8 1EZ.
0800 227711
Coca-Cola.co.uk

Telephone Helpline

0800 227711

Web Address

Coca-Cola.co.uk

Extended Data

Languages On Pack

- English

Description Breakdown

Variant - Original Taste

Coca-Cola

**Sparkling Soft Drink with
Vegetable Extracts**


INGREDIENTS

Carbonated Water, Sugar, Colour (Caramel E150d), Phosphoric Acid, Natural Flavourings Including Caffeine.

Coca-Cola

NUTRITION INFORMATION TYPICAL VALUES			
Per:	100ml	330ml	(%)
Energy:	180kJ/ 42kcal	594kJ/ 139kcal	(7%)
Fat:	0g	0g	(0%)
of which saturates:	0g	0g	(0%)
Carbohydrate:	10.6g	35g	(13%)
of which sugars:	10.6g	35g	(39%)
Protein:	0g	0g	(0%)
Salt:	0g	0g	(0%)

* Reference intake of an average adult (8400kJ/2000kcal)

330ml 				
Energy	Fat	Saturates	Sugars	Salt
594kJ 139kcal	0g	0g	35g	0g
7%	0%	0%	39%	0%

100ml: 180kJ/42kcal

