

Schweppes Tonic Water 24 x 125ml



EAN
5017726157838

Target market(s)
GB

Components

Ingredients

Carbonated Water
Sugar
Acid (Citric Acid)
Natural Flavourings including Quinine
Sweetener (Sodium Saccharin)

Nutrition

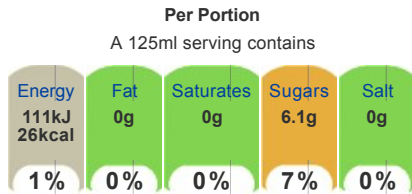
	Per 100ml	Per 125ml (%*)
Energy	89kJ	111kJ
	21kcal	26kcal (1%)
Fat	0g	0g (0%)
Of which saturates	0g	0g (0%)
Carbohydrate	4.9g	6.1g (2%)
Of which sugars	4.9g	6.1g (7%)
Protein	0g	0g (0%)
Salt	0g	0g (0%)

*Reference intake of an average adult (8400kJ/2000kcal)

Calculated Nutrition

	per 100ml	Per 125ml
Energy (kJ)	89	111
Energy (kcal)	21	26
Fat (g)	0	0
of which saturates (g)	0	0
Carbohydrate (g)	4.9	6.1
of which sugars (g)	4.9	6.1
Protein (g)	0	0
Salt (g)	0	0

Front of Pack Nutrition



Per 100ml: 89kJ / 21kcal

Reference intake of an average adult (8400kJ/2000kcal)

Product Description

Brand

Schweppes

Features

This product is GMO free
This product is gluten free
This product is allergen free
This product is suitable for vegetarians

Standardised Brand

Brand - Schweppes

Regulated Product Name

Sparkling Soft Drink with Quinine with Sugar and Sweetener

Marketing

Company Name

Coca-Cola European Partners Great Britain Ltd

Company Address

Uxbridge,
UB8 1EZ.

Product Marketing

The classic mixer full of effervescence and quinine. Perfect for pairing with your favourite gin for a crisp, refreshing G&T.

Masterfully made with quinine since 1783. A timeless classic, Perfect mixed with Gordon's®.

- With Sugar and Sweetener

Serve cold for maximum refreshment.

Store in a cool and dry place

Please recycle.

Brand Marketing

Coca-Cola and the Environment

Coca-Cola is committed to making a positive difference - to the health of the planet, consumers and the communities it serves. The company is working hard to reduce its impact on the environment in everything it does - growing more while using less in areas such as energy and water use, waste reduction and recycling - and by encouraging people to think more about the positive impact they can have on their local environment.

Manufacturer Marketing

Royal Warrant

By Appointment to her Majesty Queen Elizabeth II Schweppes Holdings Ltd Manufacturers of Schweppes and Rose's Soft Drinks

Other Information

Drink responsibly when mixed with alcohol.

This product is allergen free

Contains quinine

Contains natural flavourings
Contains added intense sweeteners

Bottle - Glass - Widely Recycled
Carton - Card - Widely Recycled

Further Description

The classic mixer full of effervescence and quinine. Perfect for pairing with your favourite gin for a crisp, refreshing G&T.

Masterfully made with quinine since 1783. A timeless classic.

Health & Lifestyle

Lifestyle

- Gluten free
- Suitable for Vegetarians

Allergy Advice

Celery - Free From
Cereals Containing Gluten - Free From
Crustaceans - Free From
Eggs - Free From
Fish - Free From
Lupin - Free From
Milk - Free From
Molluscs - Free From
Mustard - Free From
Nuts - Free From
Peanuts - Free From
Sesame - Free From
Soya - Free From
Sulphur Dioxide/Sulphites - Free From

Additives

Genetically Modified Ingredients - Free From
Sweeteners - Contains

Storage & Usage

Storage Type

Type

Ambient

Preparation and Usage

Best served chilled

Storage

Best before: See neck or side of bottle.
Store cool and dry.

Brandbank Captured Pack Data

Pack Size

125ml e

Numeric Size

Numeric Size - 125

Pack Type

Type - Wrap

Recycling Scheme

- OPRL

Units

Number of Units

Number of Units - 24

Customer Services

Manufacturers Address

Coca-Cola European Partners Great Britain Ltd,
Uxbridge,
UB8 1EZ.

Return To

Coca-Cola European Partners Great Britain Ltd,
Uxbridge,
UB8 1EZ.
0800 227711
Coca-Cola.co.uk

Telephone Helpline

0800 227711

Web Address

Coca-Cola.co.uk

Extended Data

Description Breakdown

Functional Name - Water
Variant - Tonic

Schweppes

Sparkling Soft Drink with Quinine
with Sugar and Sweetener

INGREDIENTS

Carbonated Water, Sugar, Citric Acid, Natural
Flavourings Including Quinine, Sweetener
(Sodium Saccharin).

WARNING STATEMENT

Contains Natural Quinine

Schweppes

NUTRITION INFORMATION TYPICAL VALUES

Per:	100ml	125ml (1*)
Energy:	89kJ 21kcal	111kJ 26kcal (1%)
Fat:	0g	0g (0%)
of which saturates:	0g	0g (0%)
Carbohydrate:	4.9g	6.1g (2%)
of which sugars:	4.9g	6.1g (7%)
Protein:	0g	0g (0%)
Salt:	0g	0g (0%)

* Reference intake of an average adult (8400kJ/2000kcal)

125ml

Energy 111kJ 26kcal	Fat 0g	Saturates 0g	Sugars 6.1g	Salt 0g
1%	0%	0%	7%	0%

100ml: 89kJ/21kcal