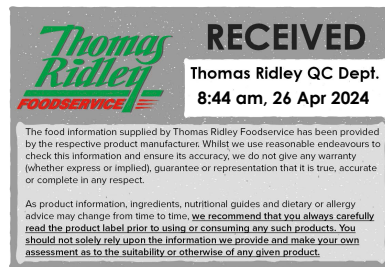


Changed Apr 26, 2024 00:25

Erudus ID 0fa575b676024008ac4ffd0b671b8d6e

Version 2.0



02214

Mövenpick of CH MOS Strawberry 5000ml

Mövenpick Of Ch Mos Strawberry 5000ml

PRODUCT DESCRIPTION

A creamy, fruity and refreshing ice cream embellished with delectable strawberry pieces.

Brand	Froneri Ice Cream UK Limited
Manufacturer Product Code	31021705
Product Type	Food
Product Category	Desserts
Storage Type	Frozen
Erudus ID	0fa575b676024008ac4ffd0b671b8d6e
Specification Type	Legacy
Inner Component GTIN	7610072176386
Outer Case GTIN	7610072176386



INGREDIENTS

Ingredient Declaration

Strawberry puree and juice (partially from concentrate) (23%), cream (**MILK**) (20%), sugar, whole **MILK**, strawberry pieces (8%), water, glucose syrup, dextrose, starches (tapioca, rice), skimmed **MILK** powder, concentrated lemon juice, **MILK** proteins, **EGG** yolk, whey powder (**MILK**), fruit and vegetable concentrate (red beet, pumpkin, apple, carrot), citrus fibres, natural strawberry flavouring.

ALLERGENS

Product Contains:

Celery/Celeriac	No
Cereals Containing Gluten	No
Barley	No
Oats	No
Rye	No
Wheat (including Spelt and Khorasan)	No
Gluten content <20ppm	Yes
Crustacea	No
Eggs	Yes
Fish	No
Lupin	No
Milk	Yes
Molluscs	No
Mustard	No
Nuts (Tree)	May Contain
Almond nuts	May Contain
Brazil nuts	May Contain
Cashew nuts	May Contain
Hazelnuts	May Contain
Macadamia (Queensland) nuts	May Contain
Pecan nuts	May Contain
Pistachio nuts	May Contain
Walnuts	May Contain
Peanuts	No
Sesame Seeds	No
Soybeans	No
Sulphur Dioxide and Sulphites	No

Risk Source:

SUPPLEMENTARY INGREDIENT INFORMATION

Palm Oil	Yes
Hydrogenated Vegetable Oil/Fat	Yes
GM Protein/DNA	No
Alcoholic Strength %Vol (ABV)	0 % Vol

ADDITIVES

Product Contains:

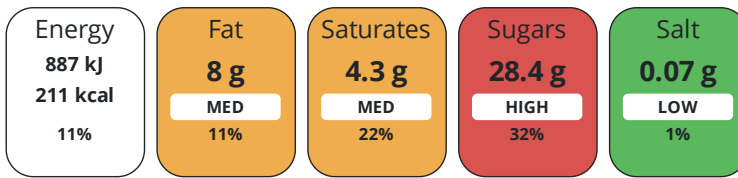
Artificial Antioxidants	No
Artificial Colours	No
Artificial Flavour Enhancers	No
Artificial Flavourings	No
Artificial Preservatives	No
Artificial Sweeteners	No

DIET SUITABILITY

Suitable for Coeliacs	No	Halal Diet	Suitable for
Kosher Diet	No	Vegetarian Diet	Suitable for
Vegan Diet	No		

NUTRITIONAL INFORMATION

Each 100g/ml portion contains:



of your reference intake.

Typical values per 100g/ml : Energy 211kcal / 887kj

Nutrient	per 100g/ml	RI per 100g/ml
Energy (kJ)	887 kJ	11%
Energy (kcal)	211 kcal	11%
Fat	8 g	11%
of which Saturates	4.3 g	22%
of which Mono-unsaturates	0 g	
of which Polyunsaturates	0 g	
Carbohydrate	31.9 g	12%
of which Sugars	28.4 g	32%
of which Polyols	0 g	
of which Starch	0 g	
Fibre	0.6 g	
Protein	2.1 g	4%
Salt	0.07 g	1%
Sodium	16 mg	

VITAMINS AND MINERALS

Nutrient	per 100g/ml	RI per 100g/ml
Vitamin A	0 µg	0%
Vitamin C	0 mg	0%
Folate/Folic Acid	0 µg	0%
Calcium	0 mg	0%
Iron	0 mg	0%
Zinc	0 mg	0%

SUPPLEMENTARY NUTRITIONAL INFORMATION

Cholesterol per 100 g/ml (UK/FR)	0 g
Trans Fats per 100 g/ml	0 g
Fat Percentage in Dry Matter per 100 g/ml	0 %
Non Milk Extrinsic Sugars per 100 g/ml	0 g

HANDLING & STORAGE INFORMATION

Directions For Use

EAT FROM FROZEN

Storage Instructions

Store at -18°C

Shelf Life from Time of Production

547 Days

ACCREDITATIONS/ CERTIFICATIONS/ ASSURANCE SCHEMES

BRCGS Certified

Other Accreditation

ORIGIN

Product Country of Origin/Place of United Kingdom

Provenance

Additional Origin Details

0

PRODUCT CHARACTERISTICS

Standards Testing

CONFIGURATION

Case Configuration

Total Quantity of Inner Components in Outer Case 1 Units

Is the Outer Case Splittable? Yes

Inner Pack Configuration

PRODUCT WEIGHTS

Inner Component

Variable Weight Consumer Item No

Net Drained Weight 4 kg

Weight/Volume

5000

Outer Case

Outer Case Gross Weight 3.14 kg

Outer Case Net Weight 2.88 kg

PRODUCT DIMENSIONS

Inner Component

Inner Component Depth 346 mm

Inner Component Width 152 mm

Inner Component Height 135 mm

Outer Case

Outer Case Depth 156 mm

Outer Case Width 348 mm

Outer Case Height 140 mm

PALLET INFORMATION

Quantity of Cases Per Pallet Layer 17 Cases

Quantity of Layers Per Pallet 11 Layers

Quantity of Cases Per Pallet 187 Cases

Pallet Height 0 MTR

Pallet Gross Weight 616.56 kg

PACKAGING

Inner Component Packaging

Type	Materials	Weight	Recycled Plastic %	Recyclable	Returnable	Composite
Carton	Paper/Cardboard	4 g	- %			

Outer Case Packaging

Type	Materials	Weight	Recycled Plastic %	Recyclable	Returnable	Composite
Case	Paper/Cardboard	108 g	- %			

Transport Packaging

Type	Materials	Weight	Recycled Plastic %	Recyclable	Returnable	Composite
Other	Plastic	460 g	- %		Yes	
Other	Paper/Cardboard	4000 g	- %		Yes	
Other	Wood	28000 g	- %		Yes	

OTHER INFORMATION

Intrastat/Taric Code	0
Identification/Health Marks	0

CONTACT INFORMATION

Address

Froneri Ice Cream UK Limited
 Richmond House
 Leeming Bar Ind Est
 Leeming Bar
 DL7 9UL
 England

P: (Phone) 01677 423397

The information on the [Erudus System](#) has been supplied by the manufacturers of the products and, whilst the owners of the Erudus System take steps to ensure the information is regularly updated, they give no warranty and no guarantee that the information is accurate. Product information and ingredients may change, please always read product labels carefully in addition to using the information provided by Erudus.

We do not accept liability for any inaccuracies or incorrect information contained on this site.
 Please visit <http://www.erudus.com/terms-and-conditions> for full terms and conditions.