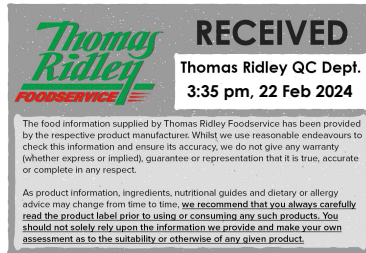


Changed Feb 22, 2024 09:42

Reviewed Feb 22, 2024 09:42

Erudus ID e3586d49fb1c41b0805521668f87e68c

Version 2.0



Thomas Ridley
FOODSERVICE

RECEIVED
Thomas Ridley QC Dept.
3:35 pm, 22 Feb 2024

The food information supplied by Thomas Ridley Foodservice has been provided by the respective product manufacturer. Whilst we use reasonable endeavours to check this information and ensure its accuracy, we do not give any warranty (whether express or implied), guarantee or representation that it is true, accurate or complete in any respect.

As product information, ingredients, nutritional guides and dietary or allergy advice may change from time to time, we recommend that you always carefully read the product label prior to using or consuming any such products. You should not solely rely upon the information we provide and make your own assessment as to the suitability or otherwise of any given product.



02307

SHMOO CHOCOLATE MIX 1.8kgs

Chocolate Flavour Thick Milkshake Mix 1x

PRODUCT DESCRIPTION

SHMOO CHOCOLATE FLAVOUR THICK SHAKE 1.8kgs

Brand	Aimia Foods Ltd
Manufacturer Product Code	CHOC SMP
Product Type	Drink
Product Category	Milkshakes & Flavoured Milk
Storage Type	Ambient
Erudus ID	e3586d49fb1c41b0805521668f87e68c
Specification Type	Drinks
Outer Case GTIN	799439038165



INGREDIENTS

Ingredient Declaration

Sugar, Fructose, Maltodextrin, Fat Reduced Cocoa Powder (7%), Dextrose, Thickeners (Xanthan Gum, Carrageenan Gum, Guar Gum, Locust Bean Gum), Colour (Plain Caramel), Natural Flavourings, Cocoa Fibre, Anti-Caking Agent (Silicon Dioxide).

ALLERGENS

Product Contains:

Celery/Celeriac	No	Mustard	No
Cereals Containing Gluten	No	Nuts (Tree)	No
Barley	No	Almond nuts	No
Oats	No	Brazil nuts	No
Rye	No	Cashew nuts	No
Wheat (including Spelt and Khorasan)	No	Hazelnuts	No
Crustacea	No	Macadamia (Queensland) nuts	No
Eggs	No	Pecan nuts	No
Fish	No	Pistachio nuts	No
Lupin	No	Walnuts	No
Milk	No	Peanuts	No
Molluscs	No	Sesame Seeds	No
		Soybeans	No
		Sulphur Dioxide and Sulphites	No

SUPPLEMENTARY INGREDIENT INFORMATION

Palm Oil	No
Hydrogenated Vegetable Oil/Fat	No
GM Protein/DNA	No

ADDITIVES

Product Contains:

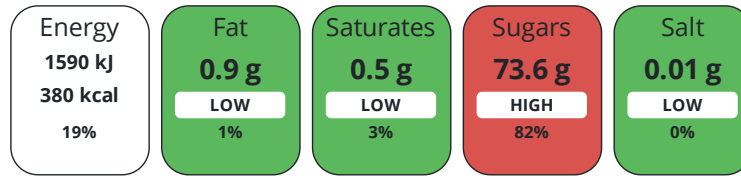
Artificial Antioxidants	No	Artificial Flavourings	No
Artificial Colours	No	Artificial Preservatives	No
Artificial Flavour Enhancers	No	Artificial Sweeteners	No

DIET
SUITABILITY

Vegan Diet	Suitable for	Vegetarian Diet	Suitable for
Halal Diet	No	Kosher Diet	No

NUTRITIONAL
INFORMATION

Each 100g/ml portion contains:



of your reference intake.

Typical values per 100g/ml : Energy 380kcal / 1590kJ

Nutrient	per 100g	RI per 100g
Energy (kJ)	1590 kJ	19%
Energy (kcal)	380 kcal	19%
Fat	0.9 g	1%
of which Saturates	0.5 g	3%
Carbohydrate	88.4 g	34%
of which Sugars	73.6 g	82%
Fibre	4 g	
Protein	2 g	4%
Salt	< 0.01 g	0%
Sodium	< 0.01 mg	

VITAMINS AND
MINERALS

Nutrient	per 100g	RI per 100g
Calcium	14 mg	2%

SUPPLEMENTARY
NUTRITIONAL
INFORMATION

HANDLING &
STORAGE
INFORMATION

Directions For Use

Pour ice cold semi-skimmed milk up to line on 13/22oz cup. Add 1 x 15ml or 25ml level scoop of Shmoo mix. Introduce onto machine and mix for 25 seconds. Remove cup from machine. Add cream, toppings, lid and straw. There are full instructions on each tub of Shmoo mix

Storage Instructions

Storage in dry coll place away from direct sunlight

Shelf Life from Time of Production	480 Days	Exempt From Shelf Life Labelling	No
---	----------	---	----

ACCREDITATIONS/
CERTIFICATIONS/
ASSURANCE
SCHEMES



Other Accreditation

NA

ORIGIN

Product Country of Origin/Place of United Kingdom

Provenance

Additional Origin Details

UK

PRODUCT CHARACTERISTICS CONFIGURATION	Standards Testing						
	Case Configuration					Inner Pack Configuration	
	Total Quantity of Inner Components in Outer Case	1 Units					
PRODUCT WEIGHTS	Is the Outer Case Splittable?	No					
	Inner Component						
	e mark	Yes					
	Outer Case						
	Outer Case Gross Weight	1.94 kg					
	Outer Case Net Weight	1.8 kg					
PRODUCT DIMENSIONS	Inner Component						
	Inner Component Depth	170 mm					
	Inner Component Width	170 mm					
	Inner Component Height	155 mm					
	Outer Case						
	Outer Case Depth	160 mm					
	Outer Case Width	160 mm					
	Outer Case Height	165 mm					
	PALLET INFORMATION	Quantity of Cases Per Pallet Layer	42 Cases			Pallet Height	1.4 MTR
Quantity of Layers Per Pallet		6 Layers			Pallet Gross Weight	508 kg	
Quantity of Cases Per Pallet		242 Cases					
PACKAGING	Outer Case Packaging						
	Type	Materials	Weight	Recycled Plastic %	Recyclable	Returnable	Composite
	Bag	Paper/Cardboard	138 g	- %			
	Bag	Aluminium	6 g	- %			
OTHER INFORMATION	Manufacturer Comments						
	NA						
CONTACT INFORMATION	Address				Technical Contact		
	Aimia Foods Ltd				Sophie Wall		
	Penny Lane				Head of Technical		
	Haydock				sophie.wall@aimiafoods.com		
	Merseyside						
	WA11 0QZ				<u>P. (Phone)</u> 01942272900		
	England						
	<u>P. (Phone)</u> 01942 272900						
	Complaints Contact						
	Helen Bulmer						
Customer Services Manager							
customer.services@aimiafoods.com							
<u>P. (Phone)</u> 01942 408600							

The information on the [Erudus System](#) has been supplied by the manufacturers of the products and, whilst the owners of the Erudus System take steps to ensure the information is regularly updated, they give no warranty and no guarantee that the information is accurate. Product information and ingredients may change, please always read product labels carefully in addition to using the information provided by Erudus.

We do not accept liability for any inaccuracies or incorrect information contained on this site.
Please visit <http://www.erudus.com/terms-and-conditions> for full terms and conditions.