

Changed Feb 07, 2024 11:48

Reviewed Feb 07, 2024 11:48

Erudus ID 4840069c97994c8c9ecf4ca7f2af4d76

Version 2.0

RECEIVED
 Thomas Ridley QC Dept.
 12:34 pm, 7 Feb 2024

The food information supplied by Thomas Ridley Foodservice has been provided by the respective product manufacturers. Whilst we use reasonable endeavours to check this information and ensure its accuracy, we do not give any warranty (whether express or implied), guarantee or representation that it is true, accurate or complete in any respect.

As product information, ingredients, nutritional guides and dietary or allergy advice may change from time to time, we recommend that you always carefully read the product label prior to using or consuming any such products. You should not solely rely upon the information we provide and make your own assessment as to the suitability or otherwise of any given product.



GLUTEN FREE MINT CHOCOLATE CHIP CAKE (1 x 14 ptn)

Gluten Free Mint Chocolate Chip Cake 1x1295g

PRODUCT DESCRIPTION

A moist chocolate sponge filled with a mint buttercream studded with milk chocolate chips and topped with mint buttercream and sprinkled with milk chocolate flakes.

Brand	The Handmade Cake Co.
Manufacturer Product Code	077012
Product Type	Food
Product Category	Cakes and Tarts
Storage Type	Frozen
Erudus ID	4840069c97994c8c9ecf4ca7f2af4d76
Specification Type	Bakery Products



Outer Case GTIN 5060044077012



INGREDIENTS

Ingredient Declaration

Sugar, Pasteurised Free Range **EGG**, Gluten Free Flour (Rice, Potato, Tapioca, Maize, Buckwheat), Salted Butter [Butter (**MILK**), Salt], Rapeseed Oil, Fat Reduced Cocoa Powder (3.2%), Milk Chocolate Chips (2.7%) [Sugar, Whole **MILK** Powder, Cocoa Butter, Cocoa Mass, Whey Powder (**MILK**), Skimmed **MILK** Powder, Emulsifier (Lecithins (**SOYA**)), Natural Vanilla Flavouring], Water, Baking Powder [Raising Agents (E575, E500(ii), E336(i)), Maize Starch], Milk Chocolate Flakes (0.6%) [Sugar, Cocoa Mass, Cocoa Butter, Whole **MILK** Powder, Skimmed **MILK** Powder, Emulsifier (Lecithins (**SOYA**)), Natural Vanilla Flavouring], Skimmed **MILK** Powder, Instant Coffee Powder, Stabiliser (Xanthan Gum), Natural Peppermint Flavouring (0.1%), Colour (Copper Chlorophyllin).

ALLERGENS

Product Contains:

Celery/Celериac	No	Mustard	No
Cereals Containing Gluten	No	Nuts (Tree)	May Contain
Barley	No	Almond nuts	May Contain
Oats	No	Brazil nuts	May Contain
Rye	No	Cashew nuts	May Contain
Wheat (including Spelt and Khorasan)	No	Hazelnuts	May Contain
Crustacea	No	Macadamia (Queensland) nuts	May Contain
Eggs	Yes	Pecan nuts	May Contain
Fish	No	Pistachio nuts	May Contain
Lupin	No	Walnuts	May Contain
Milk	Yes	Peanuts	No
Molluscs	No	Sesame Seeds	No
		Soybeans	Yes
		Sulphur Dioxide and Sulphites	No

Risk Source:

Additional Allergen Information

For allergens see ingredients in BOLD. This product may contain traces of nuts as it has been made in a bakery that uses nut ingredients.

SUPPLEMENTARY
INGREDIENT
INFORMATION

Palm Oil	No
Hydrogenated Vegetable Oil/Fat	No
GM Protein/DNA	No

ADDITIVES

Product Contains:

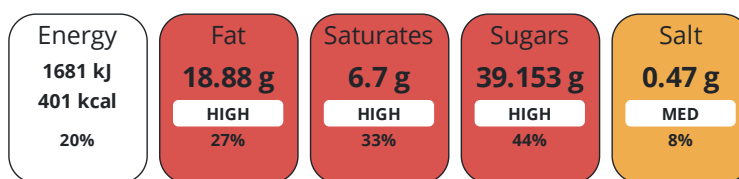
Artificial Antioxidants	No	Artificial Flavourings	No
Artificial Colours	No	Artificial Preservatives	No
Artificial Flavour Enhancers	No	Artificial Sweeteners	No

DIET
SUITABILITY

Vegan Diet	No	Vegetarian Diet	Suitable for
Halal Diet	No	Kosher Diet	No

NUTRITIONAL
INFORMATION

Each 93g/ml serving contains:



of your reference intake.

Typical values per 93g/ml : Energy 401kcal / 1681kj

Nutrient	per 100g	RI per 100g	per 93g serving	RI per 93g serving
Energy (kJ)	1808 kJ	22%	1681.4 kJ	20%
Energy (kcal)	431 kcal	22%	400.8 kcal	20%
Fat	20.3 g	29%	18.9 g	27%
of which Saturates	7.2 g	36%	6.7 g	34%
Carbohydrate	56.8 g	22%	52.8 g	20%
of which Sugars	42.1 g	47%	39.2 g	44%
Fibre	1.5 g		1.4 g	
Protein	4.5 g	9%	4.2 g	8%
Salt	0.5 g	8%	0.5 g	8%

Serving Size	93 g
Serving Size Description	One slice of cake
Number of Servings	14 Servings

Source of Nutritional Information Calculation from known/accepted datasets

SUPPLEMENTARY
NUTRITIONAL
INFORMATION

HFSS (HIGH IN
FAT, SALT AND
SUGAR)

HFSS Status	Yes
--------------------	-----

HANDLING &
STORAGE
INFORMATION

Directions For Use

Remove wrapping before defrosting. Defrost at room temperature for 4 hours. Serve at room temperature. Once defrosted store in a cool dry place. Do not refreeze once defrosted. Consume within 3 days.

Storage Instructions

Keep Frozen, Store at -18C

Shelf Life from Time of Production	365 Days	Exempt From Shelf Life Labelling	No
---	----------	---	----

ORIGIN	Product Country of Origin/Place of Provenance	United Kingdom				
	Standards Testing					
PRODUCT CHARACTERISTICS	Do you undertake trend analysis of microbiological results?	Yes	Is shelf life testing undertaken?		Yes	
	Microbiological Standards					
	Organism	Description	Frequency	Target	Maximum	Sample (g or ml)
	Enterobacteriaceae (cfu/g or ml)		Annually	<10	100	1
	Staphylococcus Aureus (cfu/g or ml)		Annually	<20	100	1
Salmonella (cfu/g or ml)	Detected/not detected in 25g	Annually	<0	1	25	
Physical Standards						
	Test	Description	Frequency	Target	Range	Sample (g or ml)
	Dimensions Height (mm)	3 per batch	Every Batch	>75	75 to 95	1295
	Weight (g)	3 per batch	Every Batch	>1295	1295 to 1495	1295
CONFIGURATION	Case Configuration	Inner Pack Configuration				
	Total Quantity of Inner Components in Outer Case	1 Units				
PRODUCT WEIGHTS	Is the Outer Case Splittable?	No				
	Inner Component					
	Variable Weight Consumer Item	No				
	Inner Component Weight	1295 g				
	Outer Case					
	Outer Case Gross Weight	1.46 kg				
	Outer Case Net Weight	1.29 kg				
PRODUCT DIMENSIONS	Inner Component					
	Inner Component Depth	220 mm				
	Inner Component Width	220 mm				
	Inner Component Height	75 mm				
	Outer Case					
	Outer Case Depth	239 mm				
	Outer Case Width	239 mm				
	Outer Case Height	100 mm				
PALLET INFORMATION	Quantity of Cases Per Pallet Layer	16 Cases	Pallet Height		1.2 MTR	
	Quantity of Layers Per Pallet	10 Layers	Pallet Gross Weight		259.2 kg	
	Quantity of Cases Per Pallet	160 Cases				

PACKAGING

Inner Component Packaging

Type	Materials	Weight	Recycled Plastic %	Recyclable	Returnable	Composite
Film	Plastic	3 g	- %			
Film	Paper/Cardboard	50 g	- %			

Outer Case Packaging

Type	Materials	Weight	Recycled Plastic %	Recyclable	Returnable	Composite
Case	Paper/Cardboard	113 g	- %			

Transport Packaging

Type	Materials	Weight	Recycled Plastic %	Recyclable	Returnable	Composite
Other	Plastic	1.88 g	- %			
Other	Paper/Cardboard	1.88 g	- %			
Other	Wood	156.3 g	- %			

OTHER INFORMATION

Manufacturer Comments

Transit packaging is given per case based on a full pallet load.

CONTACT INFORMATION

Address

The Handmade Cake Co.
The Bakery
Gardner Road
Maidenhead
Berkshire
SL6 7TU
United Kingdom

Technical Contact

Technical Team
Maidenhead.Technical@mdesserts.com

P: (Phone) 01628 770908 Ext. 1052

P: (Phone) 01628 770908

Complaints Contact

Technical Team
Maidenhead.Technical@mdesserts.com

P: (Phone) 01628 770908 Ext. 1052

The information on the [Erudus System](#) has been supplied by the manufacturers of the products and, whilst the owners of the Erudus System take steps to ensure the information is regularly updated, they give no warranty and no guarantee that the information is accurate. Product information and ingredients may change, please always read product labels carefully in addition to using the information provided by Erudus.

We do not accept liability for any inaccuracies or incorrect information contained on this site.
Please visit <http://www.erudus.com/terms-and-conditions> for full terms and conditions.