

Schweppes Lemonade 200ml



EAN
42099512

Target market(s)
GB

Components

Ingredients

Carbonated Water
Sugar
Lemon Juice from Concentrate (2%)
Citric Acid
Flavourings
Acidity Regulator (Sodium Citrate)
Sweeteners (Aspartame, Sodium Saccharin)
Preservative (Potassium Sorbate)
Antioxidant (Ascorbic Acid)

Nutrition

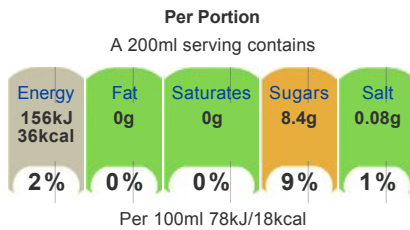
	Per 100ml	Per 200ml (%*)
Energy	78kJ	156kJ
	18kcal	36kcal (2%)
Fat	0g	0g (0%)
Of which saturates	0g	0g (0%)
Carbohydrate	4.2g	8.4g (3%)
Of which sugars	4.2g	8.4g (9%)
Protein	0g	0g (0%)
Salt	0.04g	0.08g (1%)

*Reference intake of an average adult (8400kJ/2000kcal)

Calculated Nutrition

	per 100ml	Per 200ml
Energy (kJ)	78	156
Energy (kcal)	18	36
Fat (g)	0	0
of which saturates (g)	0	0
Carbohydrate (g)	4.2	8.4
of which sugars (g)	4.2	8.4
Protein (g)	0	0
Salt (g)	0.04	0.08

Front of Pack Nutrition



Per 100ml 78kJ/18kcal

Reference intake of an average adult (8400kJ/2000kcal)

Product Description

Brand

Schweppes

Features

This product is GMO free
This product is gluten free
This product is allergen free
This product is suitable for vegetarians/vegans

Standardised Brand

Brand - Schweppes

Regulated Product Name

Sparkling Lemon Flavour Soft Drink with Sugar and Sweeteners

Marketing

Company Name

Coca-Cola Enterprises Ltd

Company Address

Uxbridge,
UB8 1EZ.

Product Marketing

'Original Lemonade masterfully made with Lemon Juice'

Made with real lemons
With Sugar and Sweeteners

Serve cold for maximum refreshment.

Store in a cool and dry place

Please recycle.

Brand Marketing

Coca-Cola and the Environment

Coca-Cola is committed to making a positive difference - to the health of the planet, consumers and the communities it serves. The company is working hard to reduce its impact on the environment in everything it does - growing more while using less in areas such as energy and water use, waste reduction and recycling - and by encouraging people to think more about the positive impact they can have on their local environment.

Manufacturer Marketing

By Appointment to her Majesty Queen Elizabeth II
Manufacturers of Schweppes and Rose's Soft Drinks Schweppes Holdings Limited, London

Other Information

Contains a Source of Phenylalanine.

Further Description

Schweppes. An irresistible combination of bubbles and bite we invented over 200 years ago.

Charming tongues since 1783 / Creator of bubbles since 1783

Proudly made in Great Britain

Health & Lifestyle

Lifestyle

- Suitable for Vegans
- Suitable for Vegetarians

Allergy Advice

Celery - Free From
Cereals Containing Gluten - Free From
Crustaceans - Free From
Eggs - Free From
Fish - Free From
Gluten - Free From
Lupin - Free From
Milk - Free From
Molluscs - Free From
Mustard - Free From
Nuts - Free From
Peanuts - Free From
Sesame - Free From
Soya - Free From
Sulphur Dioxide/Sulphites - Free From

Additives

Genetically Modified Ingredients - Free From
Sweeteners - Contains

Allergy Other Text

This product is allergen free

Additives Other Text

Contains added preservatives
Contains added antioxidants
Contains added intense sweeteners

Storage & Usage

Storage Type

Type

Ambient

Storage

Store cool and dry.

Best before end: See side of cap or bottle neck for date.

Brandbank Captured Pack Data

Pack Size

200ml e

Numeric Size

Numeric Size - 200

Recycling Info

Bottle - Glass - Widely Recycled

Pack Type

Type - Bottle

Recycling Scheme

- OPRL

Customer Services

Manufacturers Address

Coca-Cola Enterprises Ltd,
Uxbridge,
UB8 1EZ.

Return To

Coca-Cola Enterprises Ltd,
Uxbridge,
UB8 1EZ.
0800 227711
Coca-Cola.co.uk

Telephone Helpline

0800 227711

Web Address

Coca-Cola.co.uk

Extended Data

Description Breakdown

Variant - Lemonade



Sparkling Lemon Flavour Soft Drink with Sugar and Sweeteners

INGREDIENTS

Carbonated Water, Sugar, Lemon Juice from Concentrate (2%), Citric Acid, Flavourings, Acidity Regulator (Sodium Citrate), Sweeteners (Aspartame, Sodium Saccharin), Preservative (Potassium Sorbate), Antioxidant (Ascorbic Acid).

WARNING STATEMENT

Contains a Source of Phenylalanine.



NUTRITION INFORMATION TYPICAL VALUES		
Per:	100ml	200ml (2*)
Energy:	78kJ / 18kcal	156kJ / 36kcal (2%)
Fat:	0g	0g (0%)
of which saturates:	0g	0g (0%)
Carbohydrate:	4.2g	8.4g (3%)
of which sugars:	4.2g	8.4g (9%)
Protein:	0g	0g (0%)
Salt:	0.04g	0.08g (1%)

* Reference intake of an average adult (8400kJ/2000kcal)

200ml				
Energy	Fat	Saturates	Sugars	Salt
156kJ / 36kcal	0g	0g	8.4g	0.08g
2%	0%	0%	9%	1%

100ml: 78kJ / 18kcal