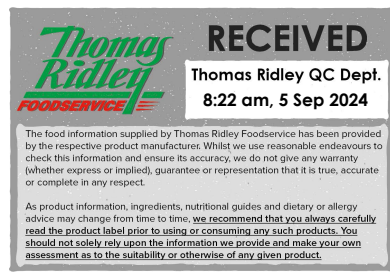


Changed Sep 04, 2024 13:24

Reviewed Sep 04, 2024 13:24

Erudus ID 333bba221124478794345c63648009aa

Version 3.0



Thomas Ridley QC Dept.
8:22 am, 5 Sep 2024

The food information supplied by Thomas Ridley Foodservice has been provided by the respective product manufacturers. Whilst we use reasonable endeavours to check this information and ensure its accuracy, we do not give any warranty (whether express or implied), guarantee or representation that it is true, accurate or complete in any respect.

As product information, ingredients, nutritional guides and dietary or allergy advice may change from time to time, we recommend that you always carefully read the product label prior to using or consuming any such products. You should not solely rely upon the information we provide and make your own assessment as to the suitability or otherwise of any given product.



02693

Fentimans Ginger Beer 275ml

Ginger Beer 12x275ml

PRODUCT DESCRIPTION

Fentimans' Ginger Beer is botanically brewed using the same traditional techniques as Thomas Fentiman back in 1905. We ferment the finest Chinese ginger root for a drink that is fiery and full of flavour.

Brand	Fentimans
Manufacturer Product Code	01GB27512B1RS
Product Type	Drink
Product Category	Carbonated & Soft Drinks
Storage Type	Ambient
Erudus ID	333bba221124478794345c63648009aa
Specification Type	Drinks



Inner Component GTIN	5029396222334
Outer Case GTIN	05029396122757



INGREDIENTS

Ingredient Declaration

Carbonated water, fermented ginger root extract (water, glucose syrup, ginger root, pear juice concentrate, yeast), sugar, pear juice concentrate, natural flavourings (ginger, lemon, capsicum), cream of tartar, acid: citric acid, sweetener: steviol glycosides from stevia, herbal infusions (speedwell, juniper, yarrow)

ALLERGENS

Product Contains:

Celery/Celeryiac	No	Mustard	No
Cereals Containing Gluten	No	Nuts (Tree)	No
Barley	No	Almond nuts	No
Oats	No	Brazil nuts	No
Rye	No	Cashew nuts	No
Wheat (including Spelt and Khorasan)	No	Hazelnuts	No
Crustacea	No	Macadamia (Queensland) nuts	No
Eggs	No	Pecan nuts	No
Fish	No	Pistachio nuts	No
Lupin	No	Walnuts	No
Milk	No	Peanuts	No
Molluscs	No	Sesame Seeds	No
		Soybeans	No
		Sulphur Dioxide and Sulphites	No

SUPPLEMENTARY
INGREDIENT
INFORMATION

Palm Oil	No
Hydrogenated Vegetable Oil/Fat	No
GM Protein/DNA	No

ADDITIVES

Product Contains:

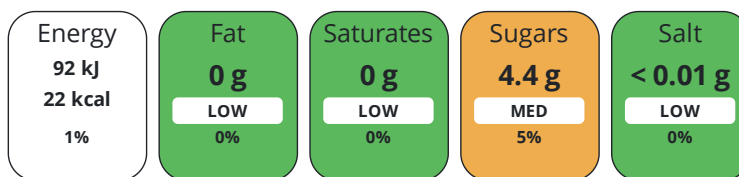
Artificial Antioxidants	No	Artificial Flavourings	No
Artificial Colours	No	Artificial Preservatives	No
Artificial Flavour Enhancers	No	Artificial Sweeteners	No

DIET
SUITABILITY

Vegan Diet	Suitable for	Vegetarian Diet	Suitable for
Halal Diet	No	Kosher Diet	No

NUTRITIONAL
INFORMATION

Each 100g/ml portion contains:



of your reference intake.

Typical values per 100g/ml : Energy 22kcal / 92kJ

Nutrient	per 100ml	RI per 100ml	per 100ml serving	RI per 100ml serving
Energy (kJ)	92 kJ	1%	92 kJ	1%
Energy (kcal)	22 kcal	1%	22 kcal	1%
Fat	0 g	0%	-	-
of which Saturates	0 g	0%	-	-
of which Mono-unsaturates	0 g	-	-	-
of which Polyunsaturates	0 g	-	-	-
Carbohydrate	4.6 g	2%	4.6 g	2%
of which Sugars	4.4 g	5%	4.4 g	5%
of which Polyols	0 g	-	-	-
of which Starch	0 g	-	-	-
Fibre	0 g	-	-	-
Protein	0 g	0%	-	-
Salt	< 0.01 g	0%	-	-
Sodium	< 0.01 mg	-	-	-

Serving Size	100 ml
---------------------	--------

SUPPLEMENTARY
NUTRITIONAL
INFORMATION

Trans Fats per 100 g/ml	0 g
--------------------------------	-----

HFSS (HIGH IN
FAT, SALT AND
SUGAR)
HANDLING &
STORAGE
INFORMATION

HFSS Status	No
--------------------	----

Directions For Use

Serve chilled, up end before pouring. Once opened, consume within 3 days.

Storage Instructions

Ambient, Chill for immediate consumption

Shelf Life from Time of Production	547 Days
---	----------

ORIGIN	Product Country of Origin/Place of Provenance United Kingdom					
	Additional Origin Details		N/A			
PRODUCT CHARACTERISTICS	Standards Testing					
	Do you undertake trend analysis of microbiological results?	No	Is shelf life testing undertaken?		No	
CONFIGURATION	Case Configuration		Inner Pack Configuration			
	Total Quantity of Inner Components in Outer Case	12 Units				
	Is the Outer Case Splittable?	No				
PRODUCT WEIGHTS	Inner Component					
	Inner Component Volume	275 ml				
	Outer Case					
	Outer Case Gross Weight	6.39 kg				
	Outer Case Net Weight	0 kg				
PRODUCT DIMENSIONS	Inner Component					
	Inner Component Depth	64 mm				
	Inner Component Width	64 mm				
	Inner Component Height	197 mm				
	Outer Case					
	Outer Case Depth	254 mm				
	Outer Case Width	192 mm				
	Outer Case Height	203 mm				
PALLET INFORMATION	Quantity of Cases Per Pallet Layer	22 Cases	Pallet Type		UK Standard Pallet	
	Quantity of Layers Per Pallet	7 Layers	Pallet Height		0 MTR	
	Quantity of Cases Per Pallet	154 Cases	Pallet Gross Weight		1004.06 kg	
PACKAGING	Inner Component Packaging					
	Type	Materials	Weight	Recycled Plastic %	Recyclable	Returnable
	Bottle	Paper/Cardboard	0.5 g	- %		
	Bottle	Aluminium	1.5 g	- %		
	Bottle	Glass	250 g	- %		
	Outer Case Packaging					
	Type	Materials	Weight	Recycled Plastic %	Recyclable	Returnable
	Case	Plastic	16 g	- %		
	Case	Paper/Cardboard	32.1 g	- %		
OTHER INFORMATION	Commodity Code	22021000				
	Manufacturer Comments					
	N/A					

CONTACT
INFORMATION

Address

Fentimans
Fearless House
Beaufront Park
Hexham
Northumberland
NE46 4TU
United Kingdom

P: (Phone) 01434 609847

The information on the [Erudus System](#) has been supplied by the manufacturers of the products and, whilst the owners of the Erudus System take steps to ensure the information is regularly updated, they give no warranty and no guarantee that the information is accurate. Product information and ingredients may change, please always read product labels carefully in addition to using the information provided by Erudus.

We do not accept liability for any inaccuracies or incorrect information contained on this site.
Please visit <http://www.erudus.com/terms-and-conditions> for full terms and conditions.