

Changed Sep 04, 2024 13:51

Reviewed Sep 04, 2024 13:51

Erudus ID 84bdf8103d9a458889d00e8f0739577d

Version 3.0

02694

# Fentimans Rose Lemonade 275ml

Fentimans Rose Lemonade 12x275ml

## PRODUCT DESCRIPTION

Our iconic Rose Lemonade is made with pure Otto rose oil from the world-famous Rose Valley in Kazanlak, Bulgaria. This rose oil is one of the most valuable essential oils on earth and used in some of the finest perfumes on the market. We blend a small amount of this oil with lemon juice to add an unrivalled depth of flavour.

Brand	Fentimans
Manufacturer Product Code	01RL27512B1RS
Product Type	Drink
Product Category	Carbonated & Soft Drinks
Storage Type	Ambient
Erudus ID	84bdf8103d9a458889d00e8f0739577d
Specification Type	Drinks



Inner Component GTIN	5029396738576
Outer Case GTIN	05029396738583



## INGREDIENTS

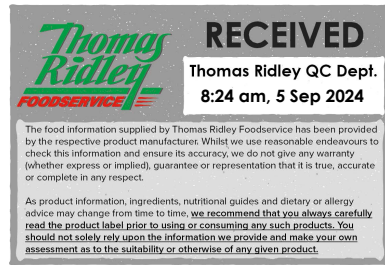
### Ingredient Declaration

Carbonated water, fructose, sugar, clarified lemon juice from concentrate (6%), pear juice concentrate (5%), fermented ginger root extract (water, glucose syrup, ginger root, pear juice concentrate, yeast), natural flavourings, stabiliser (pectin), acid (tartaric acid, citric acid), colour (red cabbage extract), sweetener: steviol glycosides from stevia, Bulgarian Rose Oil.

## ALLERGENS

Product Contains:

Celery/Celериac	No	Mustard	No
Cereals Containing Gluten	No	Nuts (Tree)	No
Barley	No	Almond nuts	No
Oats	No	Brazil nuts	No
Rye	No	Cashew nuts	No
Wheat (including Spelt and Khorasan)	No	Hazelnuts	No
Crustacea	No	Macadamia (Queensland) nuts	No
Eggs	No	Pecan nuts	No
Fish	No	Pistachio nuts	No
Lupin	No	Walnuts	No
Milk	No	Peanuts	No
Molluscs	No	Sesame Seeds	No
		Soybeans	No
		Sulphur Dioxide and Sulphites	No



SUPPLEMENTARY  
INGREDIENT  
INFORMATION

<b>Palm Oil</b>	No
<b>Hydrogenated Vegetable Oil/Fat</b>	No
<b>GM Protein/DNA</b>	No

ADDITIVES

*Product Contains:*

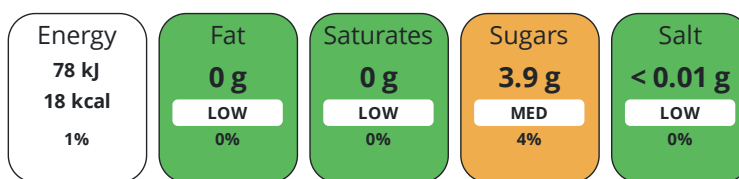
<b>Artificial Antioxidants</b>	No	<b>Artificial Flavourings</b>	No
<b>Artificial Colours</b>	No	<b>Artificial Preservatives</b>	No
<b>Artificial Flavour Enhancers</b>	No	<b>Artificial Sweeteners</b>	No

DIET  
SUITABILITY

<b>Vegan Diet</b>	Suitable for	<b>Vegetarian Diet</b>	Suitable for
<b>Halal Diet</b>	No	<b>Kosher Diet</b>	No

NUTRITIONAL  
INFORMATION

Each 100g/ml portion contains:



of your reference intake.

Typical values per 100g/ml : Energy 18kcal / 78kJ

Nutrient	per 100ml	RI per 100ml	per 100ml serving	RI per 100ml serving
<b>Energy (kJ)</b>	78 kJ	1%	78 kJ	1%
<b>Energy (kcal)</b>	18 kcal	1%	18 kcal	1%
<b>Fat</b>	0 g	0%	-	-
<b>of which Saturates</b>	0 g	0%	-	-
<b>of which Mono-unsaturates</b>	0 g	-	-	-
<b>of which Polyunsaturates</b>	0 g	-	-	-
<b>Carbohydrate</b>	4 g	2%	4 g	2%
<b>of which Sugars</b>	3.9 g	4%	3.9 g	4%
<b>of which Polyols</b>	0 g	-	-	-
<b>of which Starch</b>	0 g	-	-	-
<b>Fibre</b>	0 g	-	-	-
<b>Protein</b>	0 g	0%	-	-
<b>Salt</b>	< 0.01 g	0%	-	-
<b>Sodium</b>	0 mg	-	-	-
<b>Serving Size</b>	100 ml			

SUPPLEMENTARY  
NUTRITIONAL  
INFORMATION

<b>Trans Fats per 100 g/ml</b>	0 g
--------------------------------	-----

HFSS (HIGH IN  
FAT, SALT AND  
SUGAR)  
HANDLING &  
STORAGE  
INFORMATION

<b>HFSS Status</b>	No
--------------------	----

**Directions For Use**

Serve Chilled

**Storage Instructions**

Ambient, chill for immediate consumption

<b>Shelf Life from Time of Production</b>	547 Days
---	----------

ORIGIN	<b>Product Country of Origin/Place of Provenance</b> United Kingdom						
	<b>Additional Origin Details</b>						
	UK						
PRODUCT CHARACTERISTICS	Standards Testing						
	<b>Do you undertake trend analysis of microbiological results?</b>	No	<b>Is shelf life testing undertaken?</b>		No		
CONFIGURATION	Case Configuration		Inner Pack Configuration				
	<b>Total Quantity of Inner Components in Outer Case</b>	12 Units					
	<b>Is the Outer Case Splittable?</b>	No					
PRODUCT WEIGHTS	Inner Component						
	<b>Inner Component Volume</b>	275 ml					
	Outer Case						
	<b>Outer Case Gross Weight</b>	6.39 kg					
	<b>Outer Case Net Weight</b>	0 kg					
PRODUCT DIMENSIONS	Inner Component						
	<b>Inner Component Depth</b>	64 mm					
	<b>Inner Component Width</b>	64 mm					
	<b>Inner Component Height</b>	197 mm					
	Outer Case						
	<b>Outer Case Depth</b>	254 mm					
	<b>Outer Case Width</b>	192 mm					
	<b>Outer Case Height</b>	203 mm					
PALLET INFORMATION	<b>Quantity of Cases Per Pallet Layer</b>	22 Cases	<b>Pallet Type</b>		UK Standard Pallet		
	<b>Quantity of Layers Per Pallet</b>	7 Layers	<b>Pallet Height</b>		1.59 MTR		
	<b>Quantity of Cases Per Pallet</b>	154 Cases	<b>Pallet Gross Weight</b>		1004 kg		
PACKAGING	Inner Component Packaging						
	<b>Type</b>	<b>Materials</b>	<b>Weight</b>	<b>Recycled Plastic %</b>	<b>Recyclable</b>	<b>Returnable</b>	<b>Composite</b>
	Bottle	Paper/Cardboard	0.5 g	- %			
	Bottle	Aluminium	1.5 g	- %			
	Bottle	Glass	260 g	- %			
	Outer Case Packaging						
	<b>Type</b>	<b>Materials</b>	<b>Weight</b>	<b>Recycled Plastic %</b>	<b>Recyclable</b>	<b>Returnable</b>	<b>Composite</b>
	Case	Plastic	16 g	- %			
	Case	Paper/Cardboard	32.1 g	- %			
OTHER INFORMATION	<b>Commodity Code</b>	22021000					
	<b>Manufacturer Comments</b>						
	N/A						

CONTACT  
INFORMATION

Address

Fentimans  
Fearless House  
Beaufront Park  
Hexham  
Northumberland  
NE46 4TU  
United Kingdom

P: (Phone) 01434 609847

The information on the [Erudus System](#) has been supplied by the manufacturers of the products and, whilst the owners of the Erudus System take steps to ensure the information is regularly updated, they give no warranty and no guarantee that the information is accurate. Product information and ingredients may change, please always read product labels carefully in addition to using the information provided by Erudus.

We do not accept liability for any inaccuracies or incorrect information contained on this site.  
Please visit <http://www.erudus.com/terms-and-conditions> for full terms and conditions.