

Changed Apr 23, 2024 15:26

Reviewed Apr 23, 2024 15:26

Erudus ID 2c8ad220d855489ead9edd6c718fdb03

Version 2.0

02752

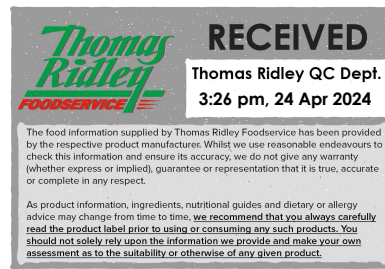
Kellogg's Nutri-Grain Strawberry Bars 25x37g

Nutri-grain Strawberry Bars 25x0.04kg

PRODUCT DESCRIPTION

Kellogg's Nutri-Grain Bars are a delicious mix of your favourite breakfast ingredients all wrapped up in a satisfying bar. These bars are ideal for a mid-morning nibble, children's lunchboxes, or an easy to eat on-the-go snack. Nutri-Grain Strawberry Bars are tasty option that will keep you fuelled for the morning ahead*. *Nutri-Grain bars contain $\geq 15\%$ of the nutrient reference value of vitamin B12. Vitamin B12 contributes to the reduction of tiredness and fatigue. Enjoy as part of a varied and balanced diet and a healthy lifestyle *Please always check the label of the pack you receive as there may be differences from the information you read on site due to stock changeover

Brand	Kellanova (previously Kellogg's)
Manufacturer Product Code	5218680000
Product Type	Food
Product Category	Cereal Bars
Storage Type	Ambient
Erudus ID	2c8ad220d855489ead9edd6c718fdb03
Specification Type	Cereals



Inner Component GTIN	5053827186797
Outer Case GTIN	5053827186803



INGREDIENTS

Ingredient Declaration

Strawberry filling (45%) (apple puree, glucose syrup, humectant {glycerol}, strawberry puree (5%), acidity regulator {citric acid}, black carrot concentrate, grape concentrate, natural flavouring), cereal flours (32%)(WHOLEWHEAT, OAT, WHEAT), sugar, vegetable oils (palm, sunflower), invert sugar syrup, dextrose, skimmed MILK powder, fructose, salt, stabiliser (methylcellulose), emulsifier (SOY lecithin), raising agent (potassium hydrogen carbonate) VITAMINS & MINERALS: Calcium carbonate, niacin, iron, vitamin B6, riboflavin, thiamin, folic acid, vitamin B12.

ALLERGENS

Product Contains:

Celery/Celeriac	No
Cereals Containing Gluten	Yes
Barley	No
Oats	Yes
Rye	No
Wheat (including Spelt and Khorasan)	Yes
Crustacea	No
Eggs	No
Fish	No
Lupin	No
Milk	Yes
Molluscs	No

Mustard	May Contain
Nuts (Tree)	May Contain
Almond nuts	May Contain
Brazil nuts	May Contain
Cashew nuts	May Contain
Hazelnuts	May Contain
Macadamia (Queensland) nuts	May Contain
Pecan nuts	May Contain
Pistachio nuts	May Contain
Walnuts	May Contain
Peanuts	No
Sesame Seeds	No
Soybeans	Yes
Sulphur Dioxide and Sulphites	No

Risk Source:

Palm Oil	Yes
GM Protein/DNA	No

SUPPLEMENTARY INGREDIENT INFORMATION

ADDITIVES

Product Contains:

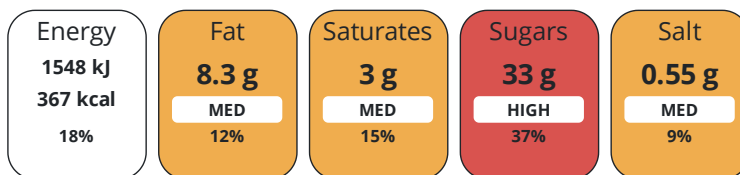
Vegan Diet	No
Halal Diet	No

DIET SUITABILITY

Vegetarian Diet	Suitable for
Kosher Diet	No

NUTRITIONAL INFORMATION

Each 100g/ml portion contains:



of your reference intake.

Typical values per 100g/ml : Energy 367kcal / 1548kj

Nutrient	per 100g	RI per 100g	per 37g serving	RI per 37g serving
Energy (kJ)	1548 kJ	18%	572.8 kJ	7%
Energy (kcal)	367 kcal	18%	135.8 kcal	7%
Fat	8.3 g	12%	3.1 g	4%
of which Saturates	3 g	15%	1.1 g	6%
Carbohydrate	67 g	26%	24.8 g	10%
of which Sugars	33 g	37%	12.2 g	14%
Fibre	3.8 g		1.4 g	
Protein	4.2 g	8%	1.6 g	3%
Salt	0.55 g	9%	0.2 g	3%
Serving Size	37 g			

VITAMINS AND MINERALS

Nutrient	per 100g	RI per 100g	per 37g serving	RI per 37g serving
Folate/Folic Acid	136 µg	68%	50.3 µg	25%
Calcium	544 mg	68%	201.3 mg	25%
Iron	6.4 mg	46%	2.4 mg	17%

SUPPLEMENTARY NUTRITIONAL INFORMATION

HFSS (HIGH IN FAT, SALT AND SUGAR) HANDLING & STORAGE INFORMATION

HFSS Status	Yes		
Directions For Use	Eat as directed		
Storage Instructions	Store in a cool dry place.		
Shelf Life from Time of Production	240 Days	Exempt From Shelf Life Labelling	No

ACCREDITATIONS/ CERTIFICATIONS/ ASSURANCE SCHEMES ORIGIN

School Approved (The Requirement for School Food Regulation 2014)			
Product Country of Origin/Place of Provenance	European Union		
Additional Origin Details	Spain		

PRODUCT CHARACTERISTICS

Standards Testing			
Do you undertake trend analysis of microbiological results?	No	Is shelf life testing undertaken?	No

CONFIGURATION

Case Configuration	Inner Pack Configuration		
Total Quantity of Inner Components in Outer Case	25 Units	Count per Inner Component	1
Is the Outer Case Splittable?	No		

PRODUCT WEIGHTS

Inner Component		
Variable Weight Consumer Item	No	
Inner Component Weight	0.04 kg	
Outer Case		
Outer Case Gross Weight	1.1 kg	
Outer Case Net Weight	0.93 kg	

PRODUCT DIMENSIONS

Inner Component		
Inner Component Depth	15 mm	
Inner Component Width	129 mm	
Inner Component Height	40 mm	
Outer Case		
Outer Case Depth	258 mm	
Outer Case Width	143 mm	
Outer Case Height	87 mm	

PALLET INFORMATION

Quantity of Cases Per Pallet Layer	28 Cases	Pallet Height	1.73 MTR
Quantity of Layers Per Pallet	16 Layers	Pallet Gross Weight	514.22 kg
Quantity of Cases Per Pallet	448 Cases		

PACKAGING

Inner Component Packaging

Type	Materials	Weight	Recycled Plastic %	Recyclable	Returnable	Composite
Box	Plastic	0.79 g	0.00 %			

Outer Case Packaging

Type	Materials	Weight	Recycled Plastic %	Recyclable	Returnable	Composite
Case	Plastic	19.7 g	0.00 %			

OTHER INFORMATION

Commodity Code 19059070

CONTACT INFORMATION

Address

Kellanova (previously Kellogg's)
 Kellogg
 Orange Tower
 Salford
 Greater Manchester
 M50 2HF
 England

P: (Phone) 07716254258

Commercial Contact

Chris Duffy
 National Account Executive
 Chris.Duffy@kellogg.com

The information on the [Erudus System](#) has been supplied by the manufacturers of the products and, whilst the owners of the Erudus System take steps to ensure the information is regularly updated, they give no warranty and no guarantee that the information is accurate. Product information and ingredients may change, please always read product labels carefully in addition to using the information provided by Erudus.

We do not accept liability for any inaccuracies or incorrect information contained on this site. Please visit <http://www.erudus.com/terms-and-conditions> for full terms and conditions.