

Changed Apr 23, 2024 15:25

Reviewed Apr 23, 2024 15:25

Erudus ID bba472baa7c24f46965ebb6980e6f755

Version 2.0

02753

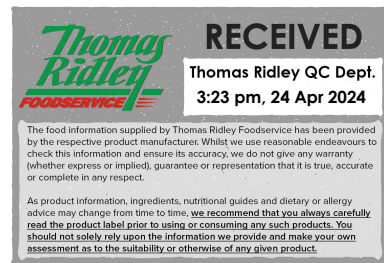
Kellogg's Nutri-Grain Apple Bars 25x37g

Nutri-grain Apple Bars 25x0.04kg

PRODUCT DESCRIPTION

Kellogg's Nutri-Grain Bars are a delicious mix of your favourite breakfast ingredients all wrapped up in a satisfying bar. These bars are ideal for a mid-morning nibble, children's lunchboxes, or an easy to eat on-the-go snack. Nutri-Grain Apple Bars are tasty option that will keep you fuelled for the morning ahead*. *Nutri-Grain bars contain $\geq 15\%$ of the nutrient reference value of vitamin B12. Vitamin B12 contributes to the reduction of tiredness and fatigue. Enjoy as part of a varied and balanced diet and a healthy lifestyle *Please always check the label of the pack you receive as there may be differences from the information you read on site due to stock changeover

Brand	Kellanova (previously Kellogg's)
Manufacturer Product Code	5218668000
Product Type	Food
Product Category	Cereal Bars
Storage Type	Ambient
Erudus ID	bba472baa7c24f46965ebb6980e6f755
Specification Type	Cereals



Inner Component GTIN	5053827186674
Outer Case GTIN	5053827186681



INGREDIENTS

Ingredient Declaration

Apple filling (45%) (apple puree, glucose syrup, humectant {glycerol}, acidity regulator {citric acid}, natural flavouring, cinnamon), cereal flours (32%)(WHOLEWHEAT, OAT, WHEAT), sugar, vegetable oils (palm, sunflower), invert sugar syrup, dextrose, calcium carbonate, skimmed MILK powder, fructose, salt, stabiliser (methylcellulose), emulsifier (SOY lecithin), raising agent (potassium hydrogen carbonate) VITAMINS & MINERALS: Niacin, iron, vitamin B6, riboflavin, thiamin, folic acid, vitamin B12.

ALLERGENS

Product Contains:

Celery/Celeriac	No
Cereals Containing Gluten	Yes
Barley	No
Oats	Yes
Rye	No
Wheat (including Spelt and Khorasan)	Yes
Crustacea	No
Eggs	No
Fish	No
Lupin	No
Milk	Yes
Molluscs	No

Mustard	May Contain
Nuts (Tree)	May Contain
Almond nuts	May Contain
Brazil nuts	May Contain
Cashew nuts	May Contain
Hazelnuts	May Contain
Macadamia (Queensland) nuts	May Contain
Pecan nuts	May Contain
Pistachio nuts	May Contain
Walnuts	May Contain
Peanuts	No
Sesame Seeds	No
Soybeans	Yes
Sulphur Dioxide and Sulphites	No

Risk Source:

Palm Oil	Yes
GM Protein/DNA	No

Product Contains:

Vegan Diet	No	Vegetarian Diet	Suitable for
Halal Diet	No	Kosher Diet	No

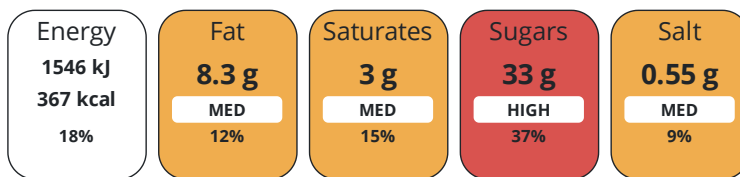
SUPPLEMENTARY INGREDIENT INFORMATION

ADDITIVES

DIET SUITABILITY

NUTRITIONAL INFORMATION

Each 100g/ml portion contains:



of your reference intake.

Typical values per 100g/ml : Energy 367kcal / 1546kJ

Nutrient	per 100g	RI per 100g
Energy (kJ)	1546 kJ	18%
Energy (kcal)	367 kcal	18%
Fat	8.3 g	12%
of which Saturates	3 g	15%
Carbohydrate	67 g	26%
of which Sugars	33 g	37%
Fibre	3.8 g	
Protein	4.1 g	8%
Salt	0.55 g	9%

VITAMINS AND MINERALS

Nutrient	per 100g	RI per 100g
Folate/Folic Acid	136 µg	68%
Calcium	544 mg	68%
Iron	6.4 mg	46%

SUPPLEMENTARY NUTRITIONAL INFORMATION

HFSS (HIGH IN FAT, SALT AND SUGAR) HANDLING & STORAGE INFORMATION

HFSS Status	Yes
--------------------	-----

Directions For Use

Eat as directed

Storage Instructions

Store in a cool dry place.

Shelf Life from Time of Production	270 Days	Exempt From Shelf Life Labelling	No
-------------------------------------------	----------	-----------------------------------------	----

ACCREDITATIONS/ CERTIFICATIONS/ ASSURANCE SCHEMES ORIGIN

School Approved (The Requirement for School Food Regulation 2014)

Product Country of Origin/Place of European Union

Provenance

Additional Origin Details

Spain

Standards Testing

PRODUCT CHARACTERISTICS CONFIGURATION

Case Configuration

Inner Pack Configuration

Total Quantity of Inner Components in 25 Units

Outer Case

Is the Outer Case Splittable? No

PRODUCT WEIGHTS

Inner Component

Variable Weight Consumer Item No

Inner Component Weight 0.04 kg

Outer Case

Outer Case Gross Weight 1.1 kg

Outer Case Net Weight 0.93 kg

PRODUCT DIMENSIONS

Inner Component

Inner Component Depth 15 mm

Inner Component Width 129 mm

Inner Component Height 40 mm

Outer Case

Outer Case Depth 258 mm

Outer Case Width 143 mm

Outer Case Height 87 mm

PALLET INFORMATION

Quantity of Cases Per Pallet Layer 28 Cases **Pallet Height** 1.73 MTR

Quantity of Layers Per Pallet 16 Layers **Pallet Gross Weight** 514 kg

Quantity of Cases Per Pallet 448 Cases

PACKAGING

Inner Component Packaging

Type	Materials	Weight	Recycled Plastic %	Recyclable	Returnable	Composite
Box	Plastic	0.79 g	0.00 %			

Outer Case Packaging

Type	Materials	Weight	Recycled Plastic %	Recyclable	Returnable	Composite
Bag	Plastic	19.7 g	0.00 %			

OTHER INFORMATION

Commodity Code 19059070

CONTACT INFORMATION

Address

Kellanova (previously Kellogg's)
 Kellogg
 Orange Tower
 Salford
 Greater Manchester
 M50 2HF
 England

P: (Phone) 07716254258

Commercial Contact

Chris Duffy
 National Account Executive
 Chris.Duffy@kellogg.com

The information on the [Erudus System](#) has been supplied by the manufacturers of the products and, whilst the owners of the Erudus System take steps to ensure the information is regularly updated, they give no warranty and no guarantee that the information is accurate. Product information and ingredients may change, please always read product labels carefully in addition to using the information provided by Erudus.

We do not accept liability for any inaccuracies or incorrect information contained on this site. Please visit <http://www.erudus.com/terms-and-conditions> for full terms and conditions.