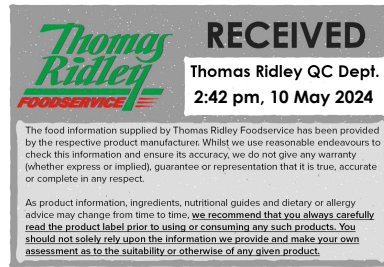


Changed May 09, 2024 14:11
Reviewed May 09, 2024 14:11
Erudus ID adb66db2c2ca4deab9e08d8e94fe01c5
Version 4.0



02754

Kellogg's Nutri-Grain Blueberry Bars 25x37g

Nutri-grain Blueberry Bars 25x0.93kg

PRODUCT DESCRIPTION

Kellogg's Nutri-Grain Bars are a delicious mix of your favourite breakfast ingredients all wrapped up in a satisfying bar. These bars are ideal for a mid-morning nibble, children's lunchboxes, or an easy to eat on-the-go snack. Nutri-Grain Blueberry Bars are tasty option that will keep you fuelled for the morning ahead*. *Nutri-Grain bars contain $\geq 15\%$ of the nutrient reference value of vitamin B12. *Please always check the label of the pack you receive as there may be differences from the information you read on site due to stock changeover

Brand	Kellanova (previously Kellogg's)
Manufacturer Product Code	5218683000
Product Type	Food
Product Category	Cereal Bars
Storage Type	Ambient
Erudus ID	adb66db2c2ca4deab9e08d8e94fe01c5
Specification Type	Cereals



Inner Component GTIN	5053827186827
Outer Case GTIN	5053827186834



INGREDIENTS

Ingredient Declaration

Blueberry filling (45%) (apple puree, glucose syrup, humectant {glycerol}, blueberry puree (5%), acidity regulator {citric acid}, natural flavouring, black carrot concentrate, grape concentrate), cereal flours (32%)(**WHOLEWHEAT, OAT, WHEAT**), sugar, vegetable oils (palm, sunflower), invert sugar syrup, dextrose, calcium carbonate, skimmed **MILK** powder, fructose, salt, stabiliser (methylcellulose), emulsifier (**SOY** lecithin), raising agent (potassium hydrogen carbonate), niacin, iron, vitamin B6, riboflavin, thiamin, folic acid, vitamin B12.

ALLERGENS

Product Contains:

Celery/Celeriac	No
Cereals Containing Gluten	Yes
Barley	No
Oats	Yes
Rye	No
Wheat (including Spelt and Khorasan)	Yes
Crustacea	No
Eggs	No
Fish	No
Lupin	No
Milk	Yes
Molluscs	No
Mustard	May Contain
Nuts (Tree)	May Contain
Almond nuts	May Contain
Brazil nuts	May Contain
Cashew nuts	May Contain
Hazelnuts	May Contain
Macadamia (Queensland) nuts	May Contain
Pecan nuts	May Contain
Pistachio nuts	May Contain
Walnuts	May Contain
Peanuts	No
Sesame Seeds	No
Soybeans	Yes
Sulphur Dioxide and Sulphites	No

Risk Source:

SUPPLEMENTARY INGREDIENT INFORMATION

Palm Oil	Yes
GM Protein/DNA	No

ADDITIVES

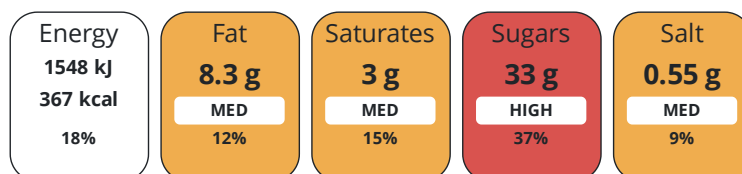
Product Contains:

DIET SUITABILITY

Vegan Diet	No	Vegetarian Diet	Suitable for
Halal Diet	No	Kosher Diet	No

NUTRITIONAL INFORMATION

Each 100g/ml portion contains:



of your reference intake.

Typical values per 100g/ml : Energy 367kcal / 1548kJ

Nutrient	per 100g	RI per 100g
Energy (kJ)	1548 kJ	18%
Energy (kcal)	367 kcal	18%
Fat	8.3 g	12%
of which Saturates	3 g	15%
Carbohydrate	67 g	26%
of which Sugars	33 g	37%
Fibre	3.8 g	
Protein	4.2 g	8%
Salt	0.55 g	9%

VITAMINS AND MINERALS

Nutrient	per 100g	RI per 100g
Folate/Folic Acid	136 µg	68%
Calcium	544 mg	68%
Iron	6.4 mg	46%

SUPPLEMENTARY NUTRITIONAL INFORMATION

HFSS (HIGH IN FAT, SALT AND SUGAR)

HFSS Status Yes

HANDLING & STORAGE INFORMATION

Directions For Use

Eat as directed

Storage Instructions

Store in a cool dry place.

Shelf Life from Time of Production

240 Days

Exempt From Shelf Life Labelling

No

ACCREDITATIONS/ CERTIFICATIONS/ ASSURANCE SCHEMES

School Approved (The Requirement for School Food Regulation 2014)

ORIGIN

Product Country of Origin/Place of European Union

Provenance

Additional Origin Details

Spain

PRODUCT CHARACTERISTICS

Standards Testing

Do you undertake trend analysis of microbiological results?

No

Is shelf life testing undertaken?

No

CONFIGURATION

Case Configuration

Total Quantity of Inner Components in Outer Case

25 Units

Is the Outer Case Splittable?

No

Inner Pack Configuration

PRODUCT WEIGHTS

Inner Component

Variable Weight Consumer Item	No
--------------------------------------	----

Inner Component Weight	0.93 kg
-------------------------------	---------

Outer Case

Outer Case Gross Weight	1.1 kg
--------------------------------	--------

Outer Case Net Weight	0.93 kg
------------------------------	---------

PRODUCT DIMENSIONS

Inner Component

Inner Component Depth	15 mm
------------------------------	-------

Inner Component Width	129 mm
------------------------------	--------

Inner Component Height	40 mm
-------------------------------	-------

Outer Case

Outer Case Depth	258 mm
-------------------------	--------

Outer Case Width	143 mm
-------------------------	--------

Outer Case Height	87 mm
--------------------------	-------

PALLET INFORMATION

Quantity of Cases Per Pallet Layer	28 Cases
---	----------

Quantity of Layers Per Pallet	16 Layers
--------------------------------------	-----------

Quantity of Cases Per Pallet	448 Cases
-------------------------------------	-----------

Pallet Height	1.73 MTR
----------------------	----------

Pallet Gross Weight	514.22 kg
----------------------------	-----------

PACKAGING

Inner Component Packaging

Type	Materials	Weight	Recycled Plastic %	Recyclable	Returnable	Composite
Box	Plastic	0.79 g	0.00 %			

Outer Case Packaging

Type	Materials	Weight	Recycled Plastic %	Recyclable	Returnable	Composite
Case	Plastic	19.7 g	0.00 %			

OTHER INFORMATION

Commodity Code	19059070
-----------------------	----------

CONTACT INFORMATION

Address

Kellanova (previously Kellogg's)
Kellogg
Orange Tower
Salford
Greater Manchester
M50 2HF
England

P: (Phone) 07716254258

Commercial Contact

Chris Duffy
National Account Executive
Chris.Duffy@kellogg.com

The information on the [Erudus System](#) has been supplied by the manufacturers of the products and, whilst the owners of the Erudus System take steps to ensure the information is regularly updated, they give no warranty and no guarantee that the information is accurate. Product information and ingredients may change, please always read product labels carefully in addition to using the information provided by Erudus.

We do not accept liability for any inaccuracies or incorrect information contained on this site.
Please visit <http://www.erudus.com/terms-and-conditions> for full terms and conditions.